

CHINATOWN CONNECTIONS

通達華埠

CCWG 9

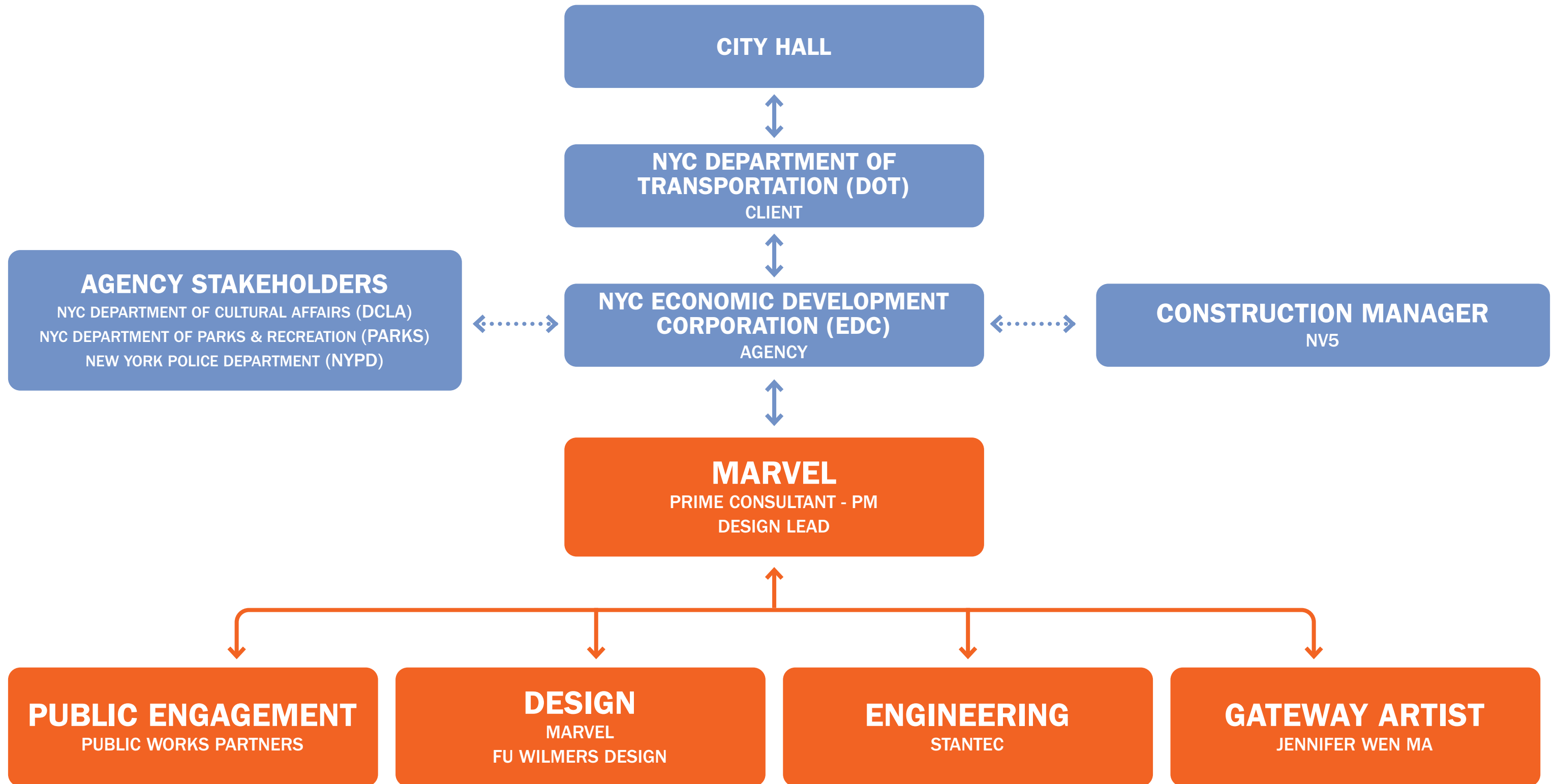
02/11/2026



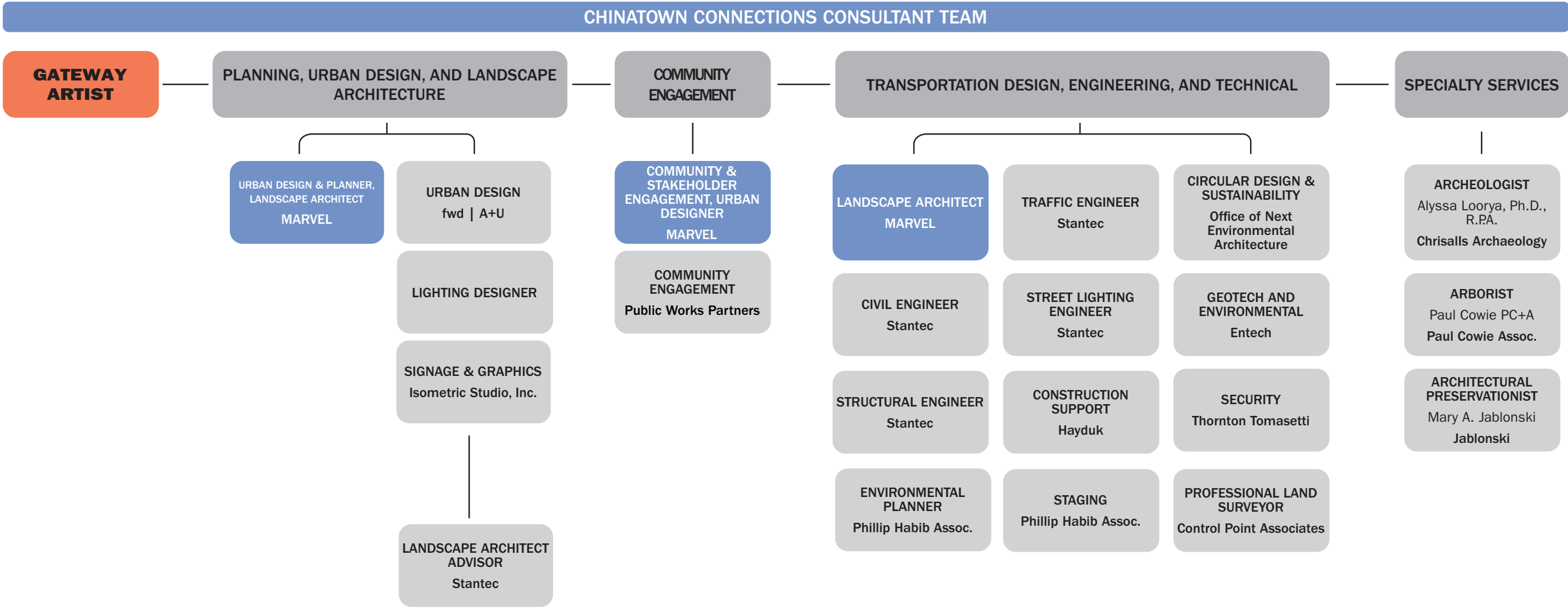
AGENDA

- 1. Introduction of Gateway Artist (15 min)**
- 2. Introduction of Construction Manager (15 min)**
- 3. Engineering and Design (15 min)**
- 4. Memorial Arch Restoration Update (10 min)**
- 5. Discussions**

Project Team Organization Chart



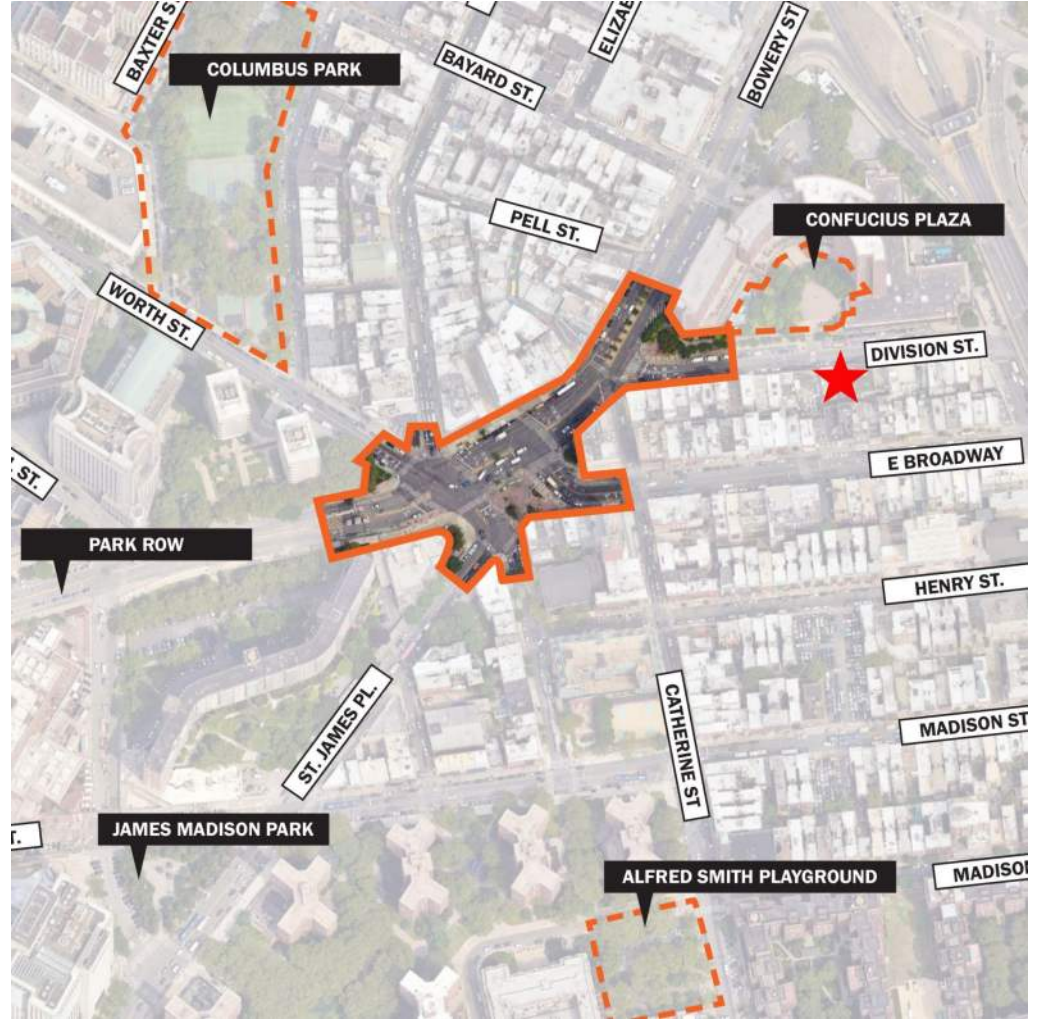
Design Team Organization Chart



LEGEND

- MAIN CONTACT
- ADDITIONAL CONTACT

Jennifer Wen Ma: Select Works
Chinatown Welcome Gateway



Autumn 1999, Jennifer Wen Ma renovating Division Street garment factory building loft space.

Biography

Jennifer Wen Ma (b. 1973, Beijing, China) is an interdisciplinary visual artist working across installation, painting, drawing, oral history, video, public art, performance, and theatre. Ma's work brings together unexpected elements, narratives, and traditions, merging philosophical inquiry with contemporary materials to create poetic, and emotionally resonant experiences.

Projects include: New Britain Museum of American Art, New Britain, 2021; Musée de l'Hospice Comtesse, Lille, 2021; Art Macao Festival, Macau, 2019; Halsey Institute of Contemporary Art, Charleston, 2019; Solomon R. Guggenheim Museum, New York, 2017; Cass Sculpture Foundation, 2016; Qatar Museums, 2016; Installation opera *Paradise Interrupted*, commissioned by Spoleto USA Festival, Lincoln Center Festival, Singapore International Festival of the Arts, and National Kaohsiung Center for the Arts, 2015, also previewed at the Temple of Dendur, The Metropolitan Museum of Art; Flux Projects, Atlanta; Market Square Public Art Program, Pittsburgh, 2015; 5x5 Nonument Park, Washington DC; Vancouver Art Gallery, 2014; Lower Manhattan Cultural Council, New York, 2013; Cambio Cultural, Belo Horizonte, Brazil, 2013; Performa 13, New York, 2013; Ullens Center For Contemporary Art, Beijing, 2012; Eslite Gallery, Taipei, 2012; The Republic of China Centennial Grand Countdown, Taipei, 2010; Biennale of Sydney, 2010; The Phillips Collection, Washington, DC, 2009; Echigo-Tsumari Triennial, Japan, 2009; Guggenheim Bilbao, Spain, 2009; Solomon R. Guggenheim Museum, New York, 2008; and the National Art Museum of China, Beijing, 2008, Singapore Biennale, 2006, among others.

Public art installations include: *Nature and Man in Rhapsody of Light at the Water Cube*, The National Aquatic Center, Beijing, 2013; *In-Between World—Daydream Nation*, Digital Beijing Building, Beijing, 2008; *Aeolian Garden*, city of Colle di Val d'Elsa, Italy, 2005, among others.

In 2019, Ma was a recipient of the Anonymous Was a Woman Award and a grant from the National Endowment for the Arts for exhibition *Cry Joy Park—Gardens of Dark and Light*. Installation opera *Paradise Interrupted* won the prestigious international award from Music Theatre Now in 2016. In 2008, she received an Emmy for the US broadcast of the opening ceremony of Beijing Olympics, where she was a member of the core creative team and the chief designer for visual and special effects.

Ma teaches in the Master of Fine Arts program at the School of Visual Arts, New York, and guest lectured at many institutions including Rhode Island School of Design, Cornell University, Michigan State University, Yale University, Columbia University, New York University, The Courtauld Institute of Art, Chinese University of Hong Kong, among others.

Selected Previous Work



A Landscape of Metamorphosis: No End to End, 2022
MGM Cotai
Macau, China











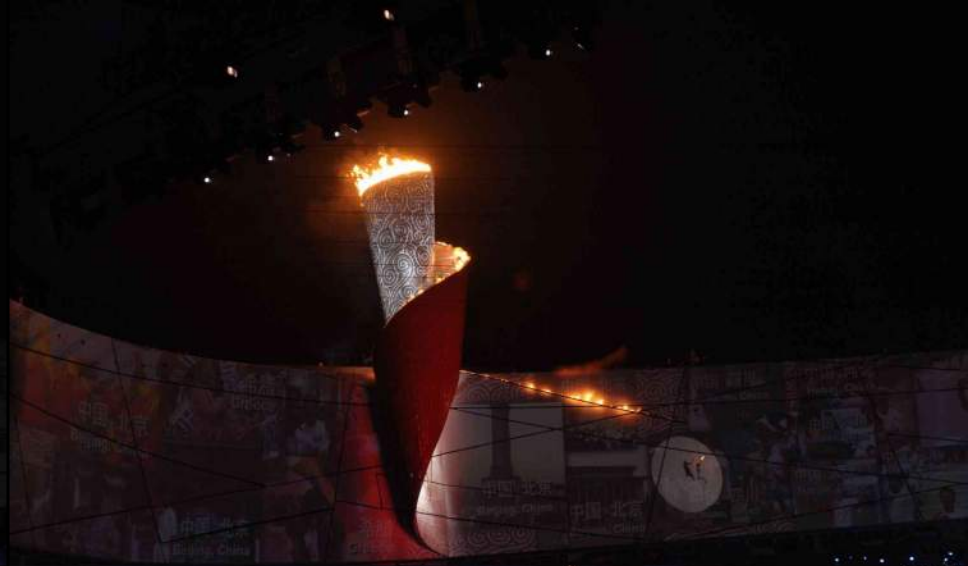
Nature and Man in Rhapsody of Light at the Water Cube, 2013
The Beijing National Aquatics Center
Beijing, China













希腊
Greece

中国 北京
Beijing, China

中国 北京
Beijing, China

希腊
Greece

中国 北京
Beijing, China

中国 北京
Beijing, China

中国 四川
Sichuan, China

中国 四川
Sichuan, China

中国 四川
Sichuan, China

中国 天津
Tianjin, China

中国 河北
Hebei, China

中国 河南
Henan, China

中国 山东
Shandong



Bending the Arc, 2015
Public art project for Flux Night
Old Fourth Ward, Atlanta, GA







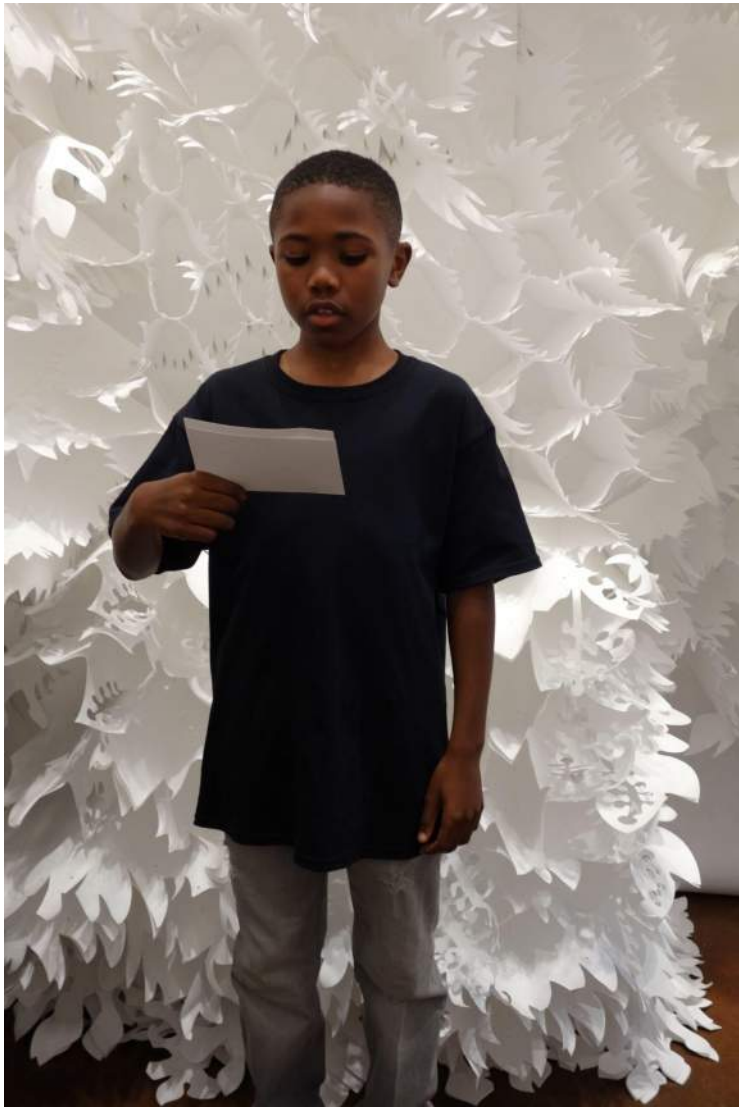






An Invitation to the Feast, 2019
Halsey Institute of Contemporary Art
Charleston, SC







Cry Joy Park — Gardens of Dark and Light, 2019
Halsey Institute of Contemporary Art
Charleston, SC







Paradise Interrupted, 2015
80-minute installation opera
Conception, direction and visual design













Paradise Interrupted, 2015
Preview at The Temple of Dandur, Metropolitan Museum of Art, New York





An Inward Sea, 2021
New Britain Museum of American Art
New Britain, CT







<https://youtu.be/NIKuzDZRmHw>



***BElonging*, 2024**

Hand-blown glass, laser-cut paper, directional dome speaker, audio recordings, interactive elements Georgetown University De La Cruz Art Gallery, Washington, DC









Everchange, projected completion 2029
New York City Public Design Commission for 70 Mulberry Street
New York





文 culture/literature



乐 music/joy



易 change



归 return/belonging



聚 gather/unite



庚 legacy



翔 fly/soar



变 metamorphosis

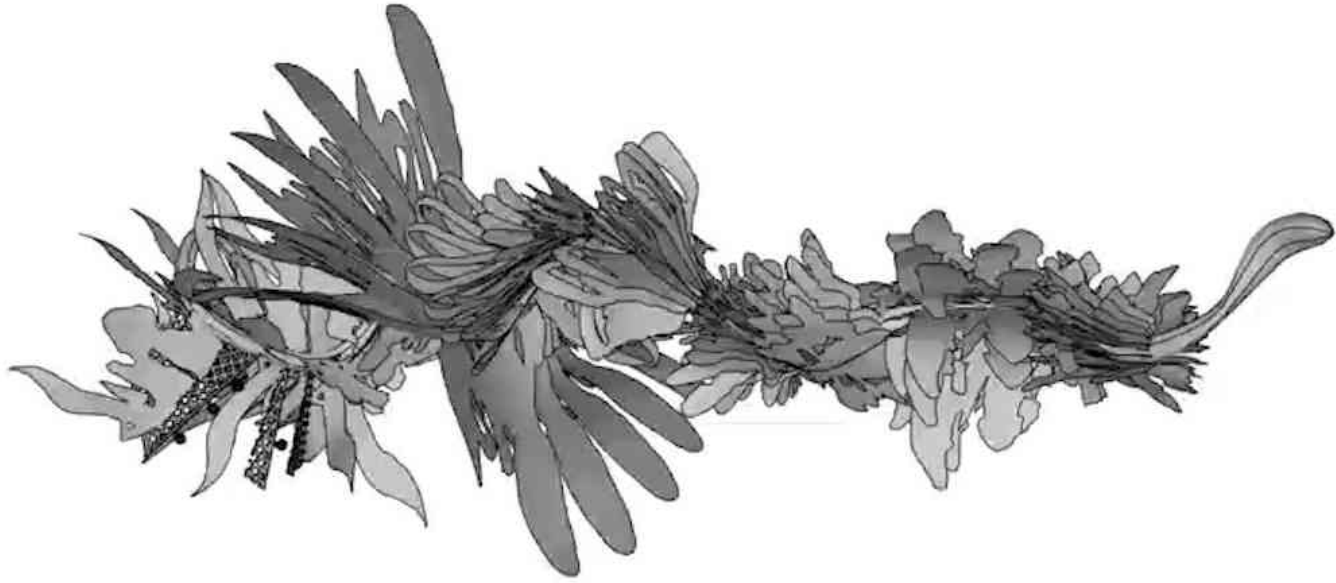


家 family/home

Wing designs based on various Chinese characters



Laser cut metal of "Family" character in Rorschach form



3D animation of sculpture



Details of different finishes and color applications on metal surface



Before and after applying heat to the 1:5 scale model



Fully assembled 1:5 scale model



Fully assembled 1:5 scale model



1:5 scale model detail

Oral History

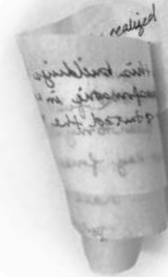
Glass time-capsules will host 35 recorded stories from 70 Mulberry Street tenants and neighborhood community members.

The artist team will collect oral history recordings with a diverse, multi-generational, and multi-language community of Chinatown participants.

Each recording is linked to a time-capsule on the sculpture, with participants' handwriting inserted into the capsules, creating a direct and tangible sense of belonging for the participants with the artwork and building.

Final edited recordings will be heard on the project's official website and mobile app, accessible through a QR code on the artwork signage.

2-3 capsules are designated to be filled one year following the artwork's unveiling, capturing life in the new building and continuation of history.





Glass Time Capsule prototype fitted with LED light





Oral history workshop with seniors served by Chinese-American Planning Council

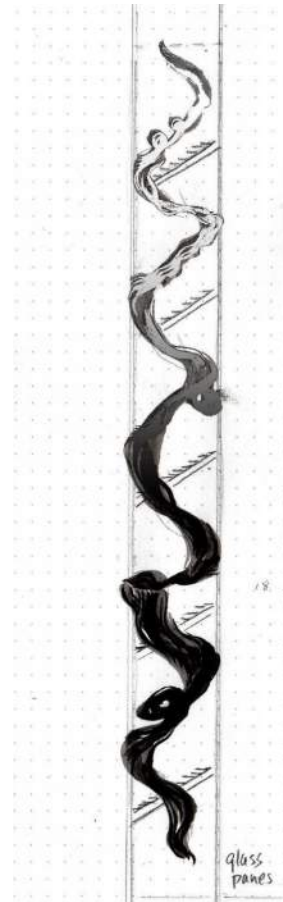
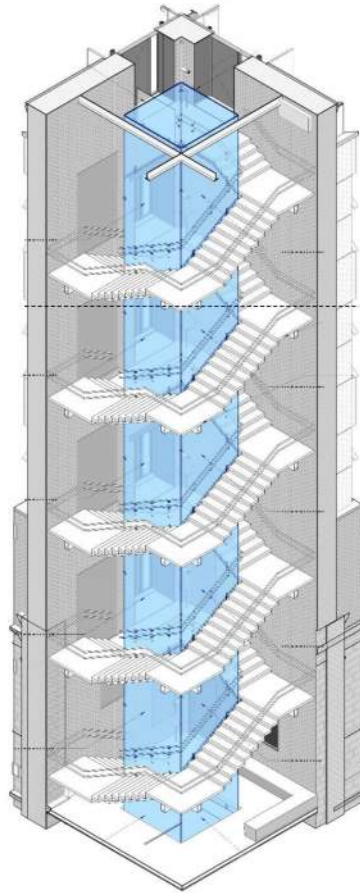


Workshop participating seniors served by Chinese-American Planning Council

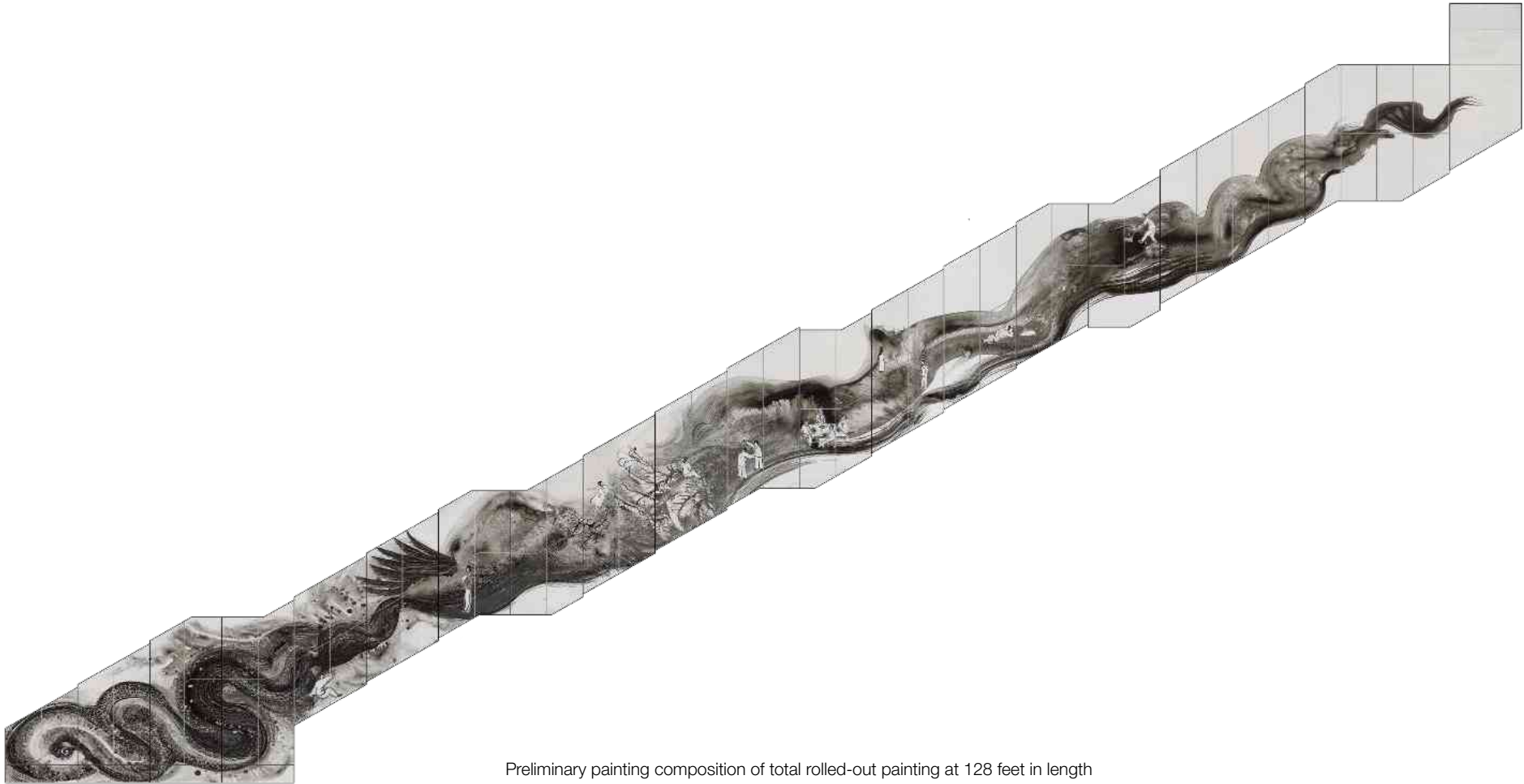


Workshop participants from Chinatown Manpower Project

Everchange II. Ink Painting on Glass

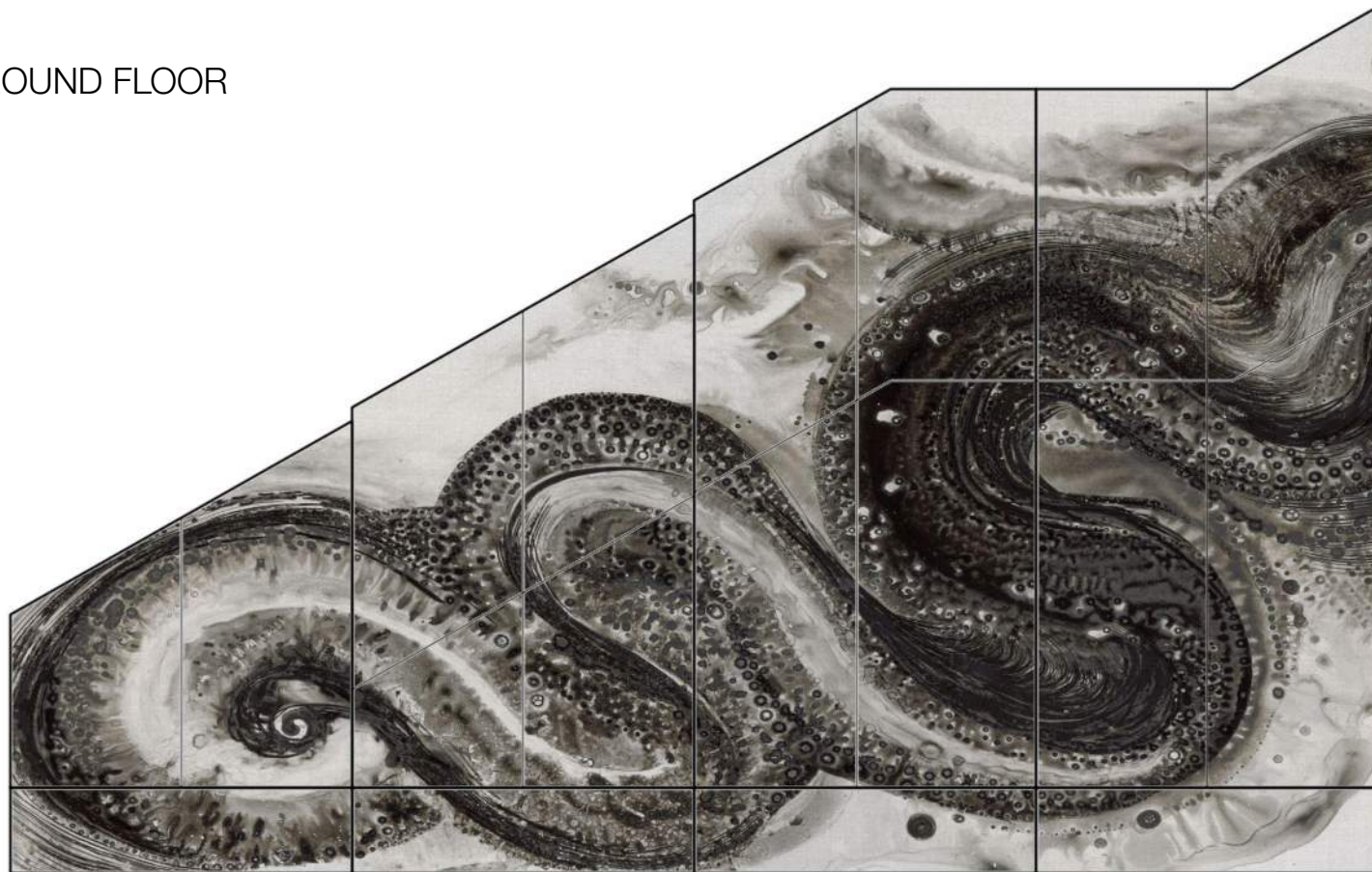


Ink Painting on Glass Structure



Preliminary painting composition of total rolled-out painting at 128 feet in length

GROUND FLOOR

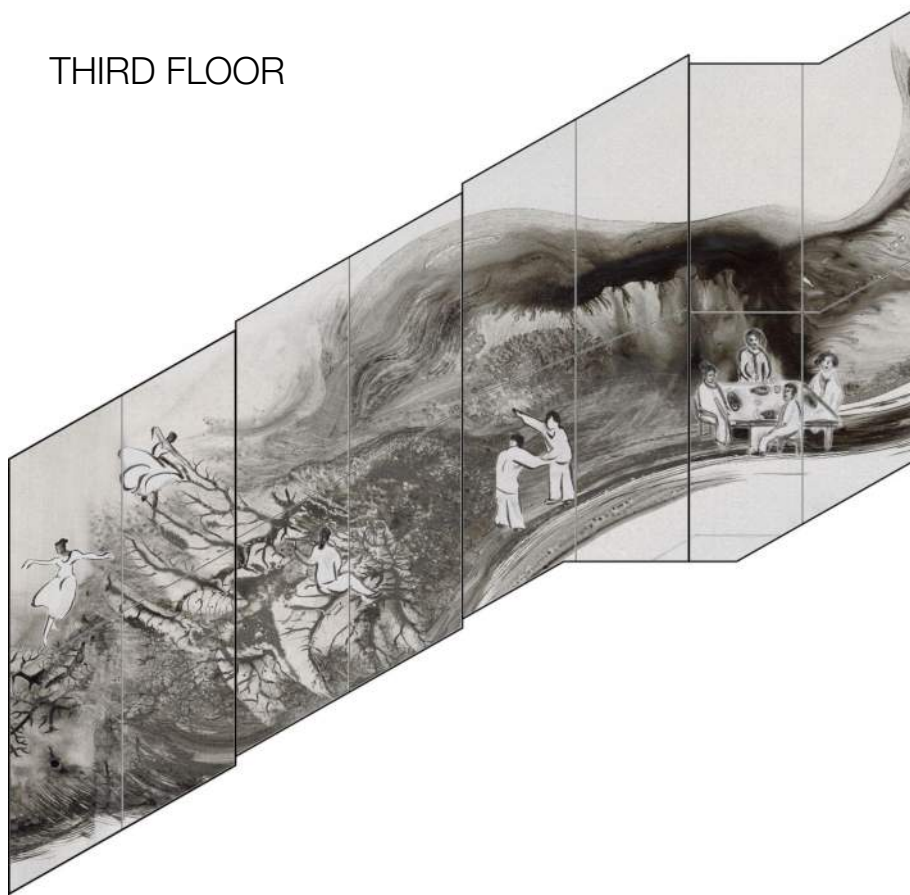


SECOND FLOOR



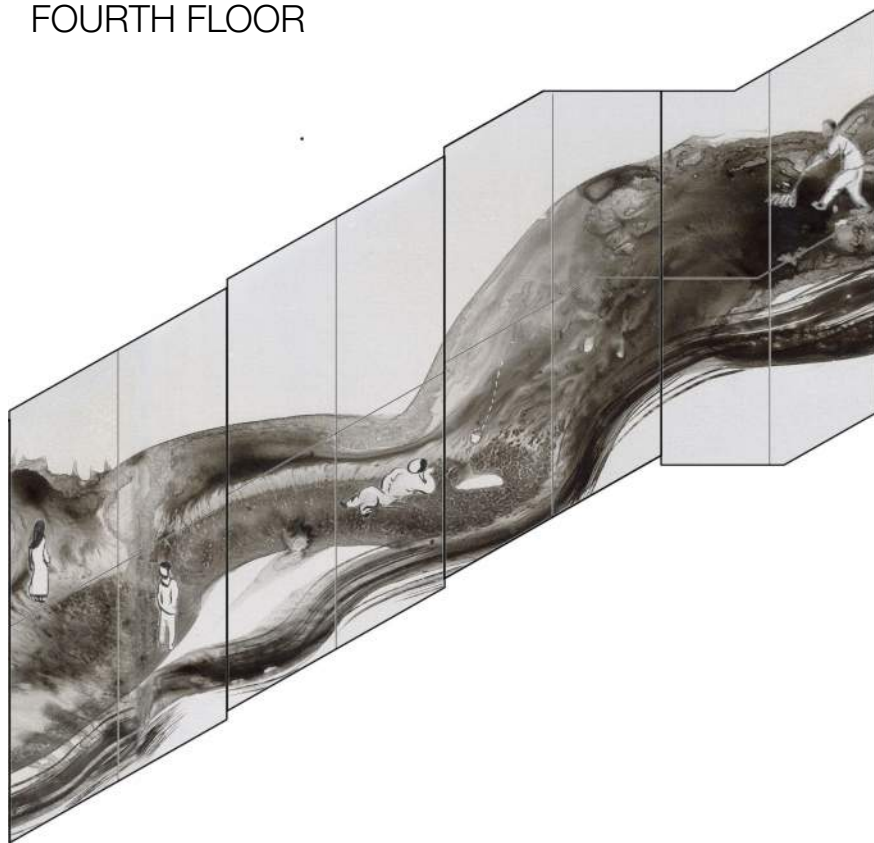
Detail

THIRD FLOOR



Detail

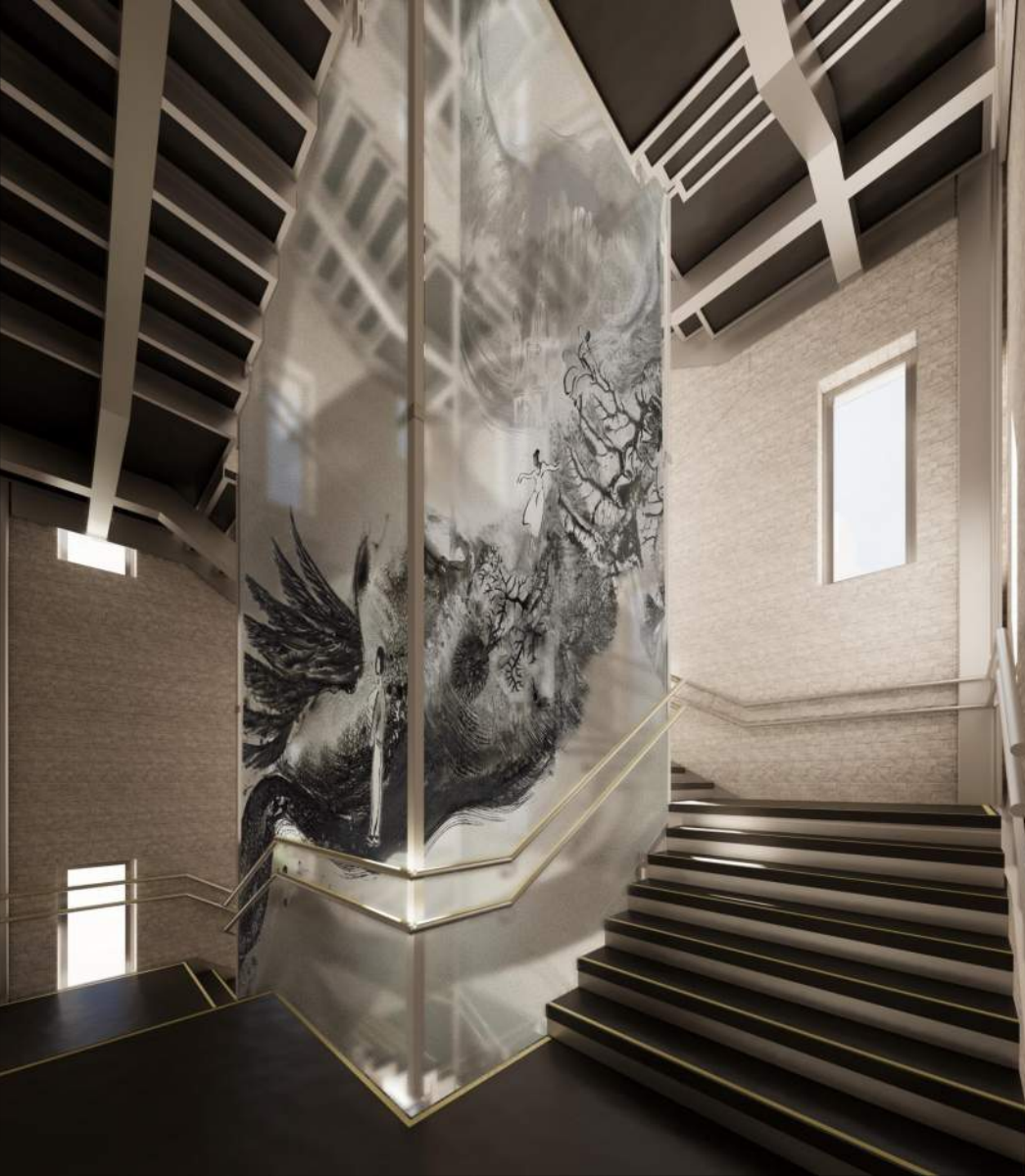
FOURTH FLOOR



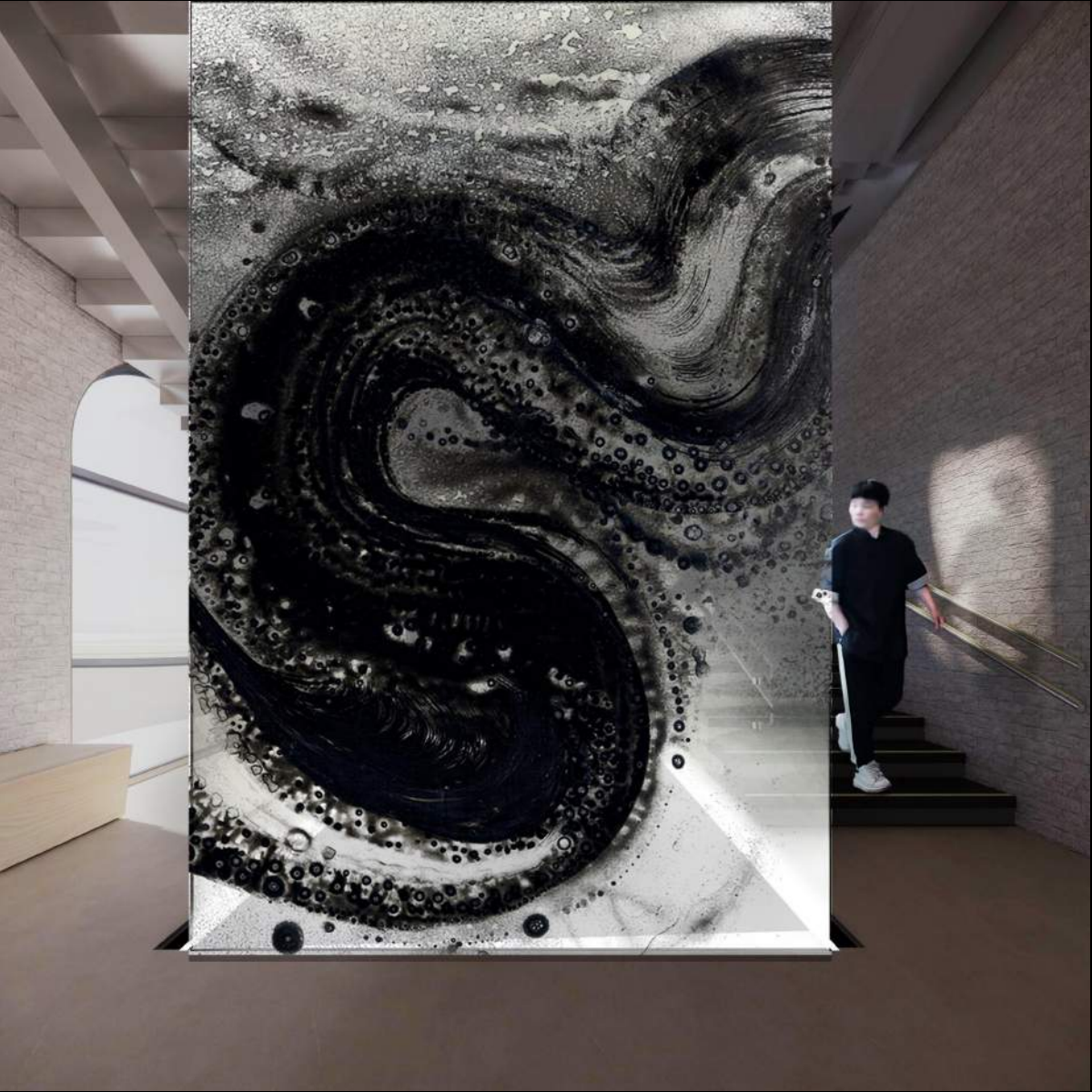
Detail

FIFTH FLOOR





Render of painting printed on glass panels



Render of painting printed on glass panels



View from Mulberry Street at a 13' distance



Thank You!

Prepared by Littlemeat Productions

www.littlemeat.net

hi@littlemeat.net

2026.2



N | V | 5

Beyond Engineering

Construction Management for

Kimlau Square / Chinatown Connections

CCWG Meeting #9
February 11, 2026



Lead Construction Manager
NV5-Naik Engineering JV

Project Management, Utility/Agency Coordination, Environmental Permitting,
Maintenance & Protection of Traffic, Circular Economy Analysis



Project Scheduler
Infinite Consulting Corp.



Community Liaison
3x3



Project Estimator
Toscano Clements Taylor, LLC

KEY STAFF

NV5



PRINCIPAL-IN-CHARGE

Joseph Menzer, PE, DBIA

- 29 Years of Experience
- Extensive experience designing, supervising, and managing public infrastructure projects in NYC
- Principal Engineer for NYCDDC and NYCEDC Term Agreements, as well as NYCDOT ESAs
- Project Manager for numerous NYC roadway and bridge projects

NV5



SENIOR PROJECT MANAGER

Joseph LaRocca, PE, DBIA

- 23 Years of Experience
- NYC Construction Management Director
- Lead for large-scale infrastructure projects
- Extensive experience on public sector construction projects throughout the NYC region

NV5



UTILITY COORDINATION

Andrew Matarazzo, PE, DBIA

- 20 Years of Experience
- NYC Utility Engineering Group Manager
- Extensive experience managing complex projects for numerous private utility clients, including structural design for bridge attachments and manholes and re-design of proposed city utilities

NV5

CON EDISON COORDINATION

Maria De Bonis, PE

- 18 Years of Experience
- Con Ed & Utilities Expert
- Principal, Project Manager, and Engineer on many Con Edison Public Improvement Group projects for NYCDDC, NYCDOT, NYSDOT, NYSTA, NYC Parks, BPCA, and NYCEDC



NV5

ENVIRONMENTAL COMPLIANCE & PERMITTING

Elisa Tsang, PE, ENV SP, WEDG

- 21 Years of Experience
- Extensive experience managing and performing environmental impact assessments and permit compliance for projects throughout the NYC region



NV5

ASST. PM/OFFICE ENGINEER

Jinu Mathew

- 13 Years of Experience
- Office Engineer for several high-profile construction projects in the greater NYC area, such as Lexington Avenue Pedestrian Safety Improvements Design-Build for NYCDDC



NV5

SUPERINTENDENT/RE

Hadi Elhashash, PE, DBIA

- 29 Years of Experience
- Has work as Resident Engineer, Office Engineer, and Inspector for construction projects throughout NYC, including many for NYCDDC



PROJECT SCHEDULER

Travis Williams, CEP, PSP

- 13 Years of Experience
- Critical Path Method (CPM) Scheduling Expertise
- Extensive portfolio of diverse projects with a demonstrated track record of being delivered on time and within budget



PROJECT ESTIMATOR

Pallav Mistry, DBIA

- 12 Years of Experience
- Cost Management Professional supporting complex infrastructure and transportation projects for public sector clients throughout the Northeast



COMMUNITY LIAISON

Priyanka Jain

- 15 Years of Experience (7 Years in Chinatown)
- Engages with NYC agencies and community-based organizations to develop and implement tools to create transformational impact



COMMUNITY LIAISON

Amy Xiaofan Jiang

- 5 Years of Experience, including 1 Year in China
- Community Engagement Specialist working directly in Chinatown and with Asian artists
- Provides language access in Chinese for the Chinatown DRI

RELEVANT PROJECT EXPERIENCE

QueensWay – Metropolitan Hub Construction Management

NYCEDC | Queens, NY

NV5 is serving as the Construction Manager at Risk and providing project management services and field supervision of all trades for this exciting initiative to transform a former LIRR right-of-way into a linear park and greenway in the Forest Hills and Glendale neighborhoods of Queens. NV5 will provide comprehensive preconstruction and construction management services with cost and schedule accountability under a Guaranteed Maximum Price (GMP). We will collaborate with NYCEDC, designers, and stakeholders to align scope, budget, phasing, and constructability early in design. This will include preparing detailed cost estimates and reconciliations at each design milestone and managing ongoing cost control. NV5 will also perform constructability reviews, value engineering, risk identification, and mitigation planning; develop and maintain project schedules, logistics plans, and procurement strategies; support permitting, agency coordination, and required approvals; conduct early trade outreach and MWBE engagement in accordance with NYCEDC requirements; procure subcontractors through competitive, transparent bidding and hold all trade contracts; provide full on-site supervision, safety oversight, and quality control during construction; manage schedule adherence, cost tracking, change management, and contract administration; coordinate with NYC agencies, utilities, inspectors, and testing entities; oversee inspections, testing, commissioning, and project closeout.

NV5 SCOPE

- Construction Manager at Risk
- Project Management
- Constructability Reviews
- Cost Estimating
- Agency Coordination
- Value Engineering

PROJECT COST

\$30M



Lexington Avenue Pedestrian Safety Improvements Design-Build Project

NYCDDC | New York, NY

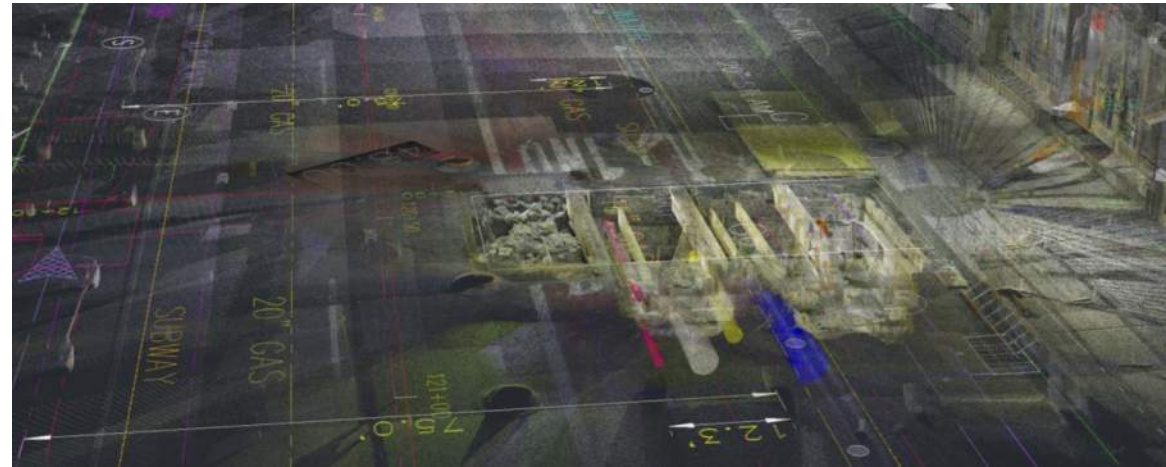
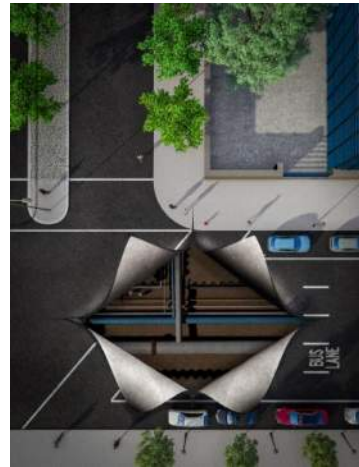
As part of the New York City Public Works Investment Act, passed by New York State, NYCDDC was authorized to award design-build contracts for certain public works within NYC. The Triumph-NV5 Team was selected to implement NYCDDC's first public infrastructure design-build project. The Lexington Avenue Design-Build project, as part of the Vision Zero program, entails the design and construction of seven (7) curb extensions at five (5) intersections between Lexington Avenue and East 41st Street and Lexington Avenue and East 48th Street, otherwise known as "The Corridor." The Lexington Avenue Corridor project is located within The Greater East Midtown business district. The district is one of the largest job centers in NYC and one of the highest-profile business addresses in the world. This corridor was identified as a priority pedestrian improvement area by the East Midtown Rezoning Governing Group, a body of appointees from City Hall, the City agencies, the Manhattan Borough President's Office, the City Council, and the local community boards. The design and reconstruction of all four corners at each of the five (5) intersections ensures that each intersection is compliant with Federal and City ADA guidelines.

NV5 SCOPE

- Street Design
- Street Lighting
- Traffic Signals
- Maintenance & Protection of Traffic
- Utility Design
- Grading

PROJECT COST

\$25.6M



Plaza De Las Americas – Reconstruction of 175th Street

NYCDDC | New York, NY

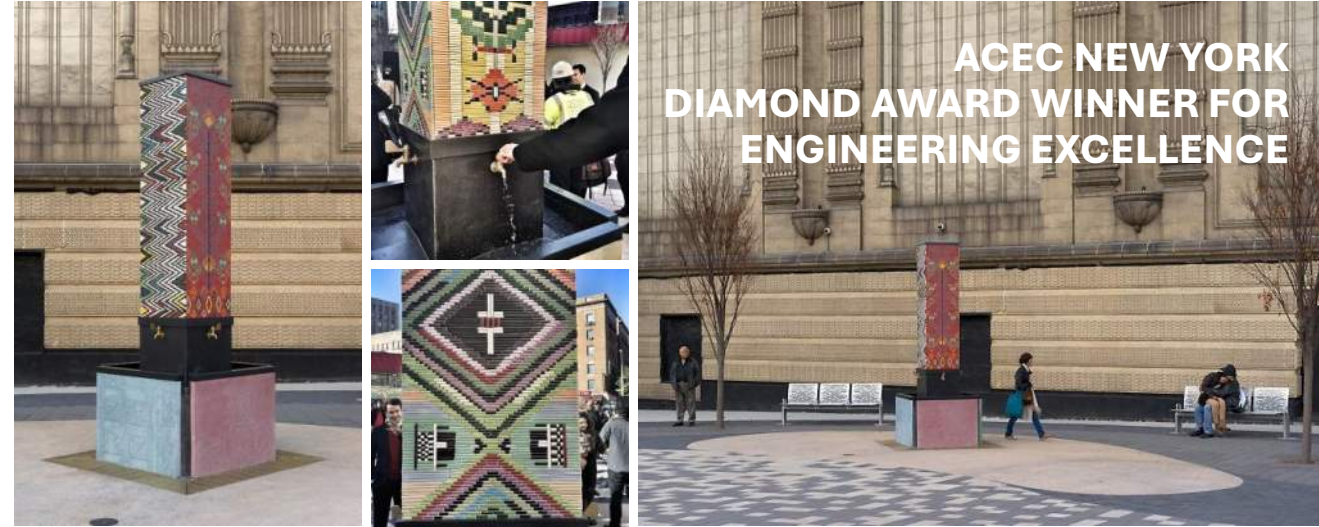
NV5 provided design services for a new public plaza in northern Manhattan, permanently closing and reconstructing the roadway to provide a flexible, shared-use space for programmatic uses, such as outdoor concerts, movies, and artist exhibitions. **NV5 worked with the artist to design and provide construction administration services during the implementation of a massive new decorative fountain (via the NYCDCA Percent for Art Program).**

NV5 SCOPE

- Site/Civil Engineering
- Traffic Engineering
- Landscape Architecture
- Sustainable Design
- Green Infrastructure
- Public Art
- Community Outreach
- Construction Administration

PROJECT COST

\$2M



**ACEC NEW YORK
DIAMOND AWARD WINNER FOR
ENGINEERING EXCELLENCE**

Myrtle Cooper Plaza

NYCDDC | Queens, NY

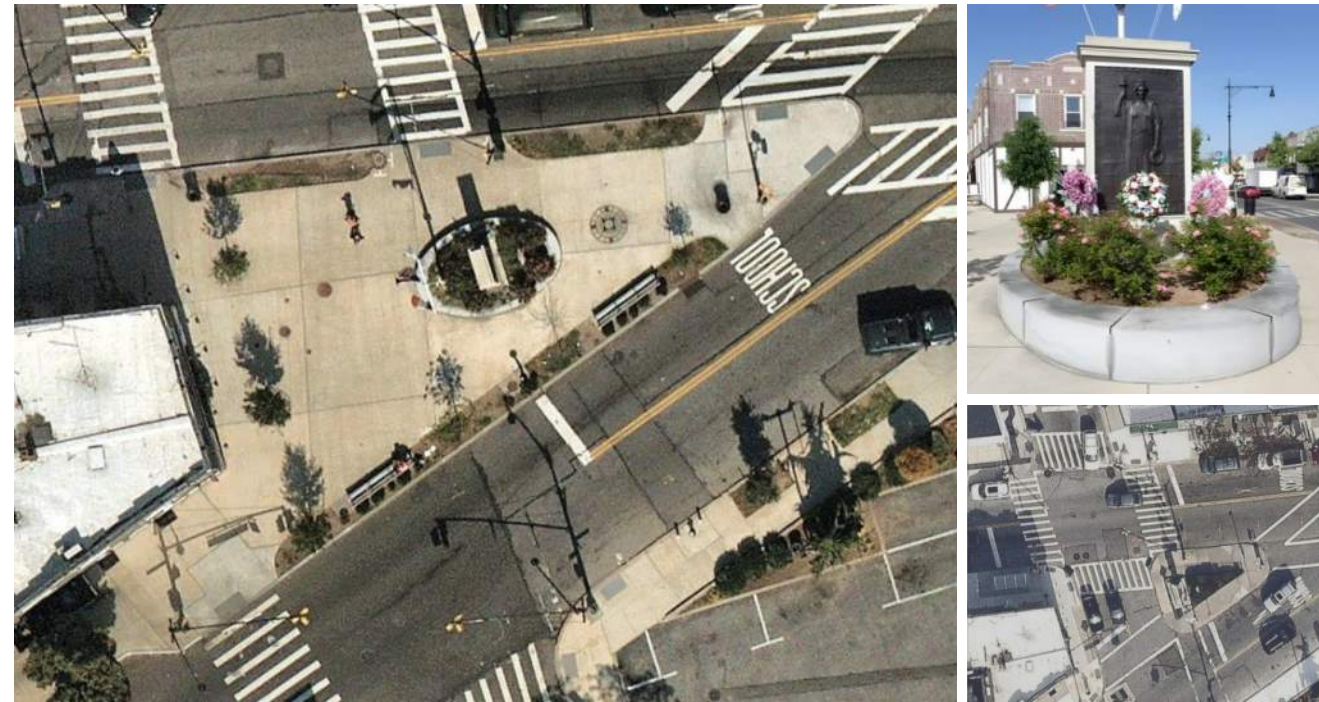
NV5's design for Myrtle Cooper Plaza relied on closing 70th Street between Myrtle and Cooper Avenues to connect a small traffic island to the adjacent city block, resulting in a generously sized triangular shaped plaza. The design features a war memorial surrounded by a garden and granite seat wall, street trees in planted tree pits, new concrete pavement with inlaid compass, flagpole, benches, tables and chairs, improved high-visibility cross-walks and sidewalk neck-downs to reduce pedestrian crossing distances the busy avenues. **NV5 developed design drawings and provided construction administration services, for the plaza and the Veterans War Memorial Statue.**

NV5 SCOPE

- Site/Civil Engineering
- Traffic Engineering
- Landscape Architecture
- Sustainable Design
- Green Infrastructure
- Public Art
- Community Outreach
- Construction Administration

PROJECT COST

\$1.5M



NYC Parks Construction Management Term Agreement

NYC Parks | Citywide, NYC

NV5 holds an On-Call Construction Management Agreement with NYC Parks to provide Construction Project Management, inspection, and supervision services for various agency construction projects. Under this Term Agreement, NV5 is partnered with Parks to provide CM services with high attention to detail, keeping in mind budget, constructability, and maintenance issues, with the goal of maximizing long-term benefits for the City and the Parks' staff who operate and maintain them, as well as the members of the public who will use them. The projects NV5 has been issued vary in type and requirements, but all have common goals and objectives, including:

- Understanding project-specific construction environment, technical issues, and complexities
- Ensuring the project remains on schedule and within budget
- Effective communication with all project stakeholders in order to convey critical project information, solicit feedback, and avoid or resolve any potential project conflicts

NV5 SCOPE

- Construction Management
- RFI/Submittal Review
- Schedule Control
- Change Order & Document Management
- Risk Management
- Subcontractor Management
- Site Safety
- Inter-agency Coordination

PROJECT COST

\$55M (To Date)



RELEVANT PROJECT EXPERIENCE

Trinity Place Reconstruction – Between Cedar Street & Morris Street

NYCDDC | New York, NY

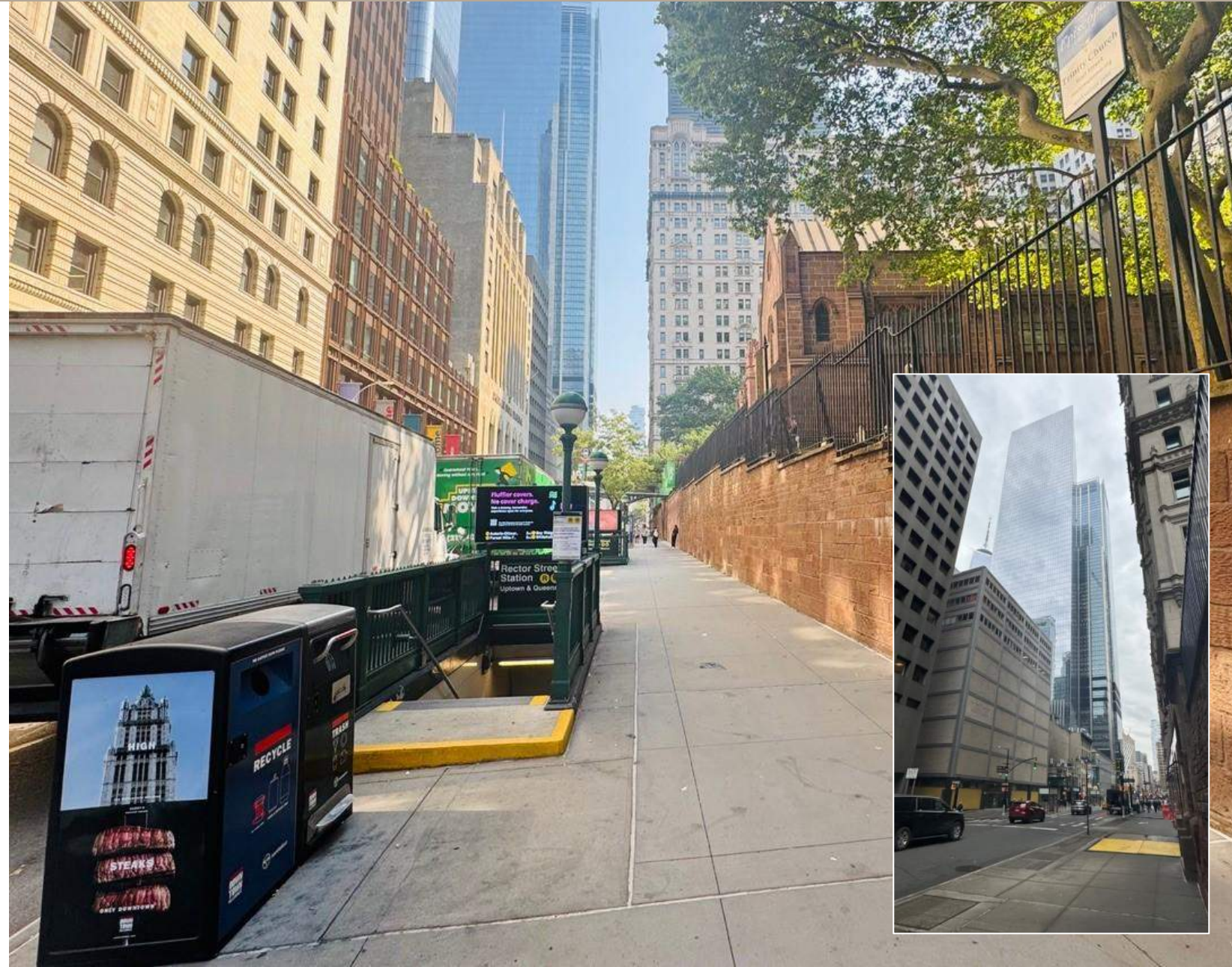
NV5 is currently providing REI services on this Lower Manhattan project involving of the full depth reconstruction of Trinity Place between Cedar Street and Morris Street, and includes the installation of new pigmented sidewalk, granite curbs, and pedestrian ramps. A new concrete base topped with asphalt and new pavement markings will also be constructed. In addition to these roadway upgrades, new catch basins are being installed, as well as new traffic and street lighting. Extensive private utility upgrades are being undertaken as part of the project, which is being constructed under the joint bid protocol. Due to the project site's location over an active subway line, extensive coordination is also required with MTA, including setting up a Force Account, as well as getting MTA approval and sign-off on sheeting drawings. Due to the project's location in Lower Manhattan, extensive coordination is required with a myriad of City agencies, as well as Manhattan Community Board #1, Downtown Alliance, and other project stakeholders.

NV5 SCOPE

- Construction Administration & REI Services
- Community Construction Liaison
- Maintenance & Protection of Traffic
- Roadway & Sidewalk Construction
- Water Main Construction
- Private Utilities & MTA Coordination
- Inter-Agency Coordination

PROJECT COST

\$18M



QUESTIONS?

ENGINEERING AND DESIGN

Site Investigations

Subsurface (Geotechnical) Investigations



The work involved:

- Taking small samples from the pavement
- Drilling into the ground to collect soil samples
- Testing how quickly water drains through the soil



DRILL MACHINE USED ON SITE

Site Investigations Environmental Findings



Soil tested not hazardous and may be reused on site where applicable.

Site Investigations

Vault Survey



Vaults surveyed to understand below sidewalk and roadway conditions.

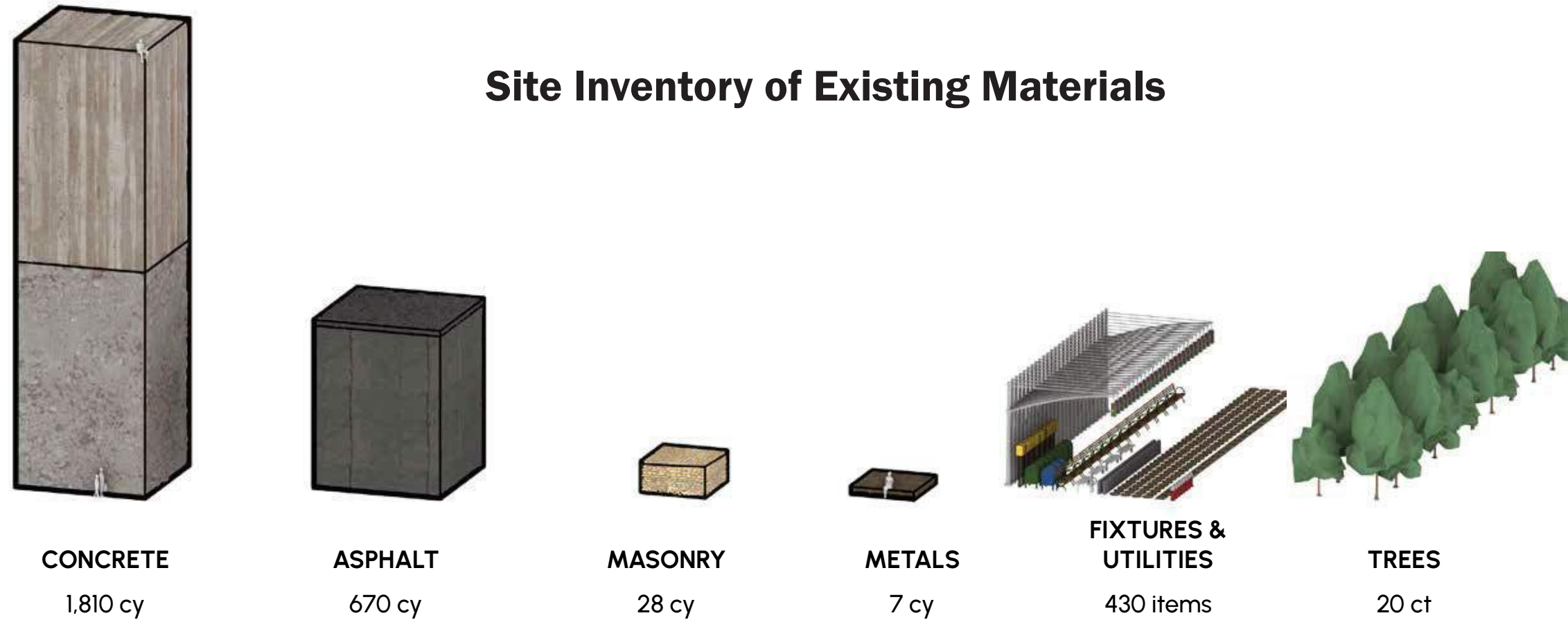
Sustainability Initiatives

Circular Design + Envision

30%



Site Inventory of Existing Materials



For Circular Design, we are working to:

- **Build with the Right Materials**
- **Build Efficiently**
- **Build for Longer-term Value**

For Envision, we are working to:

- **Improve Quality of Life**
- **Recycle, Reuse, Reduce Construction Waste**
- **Maximize Resilience**

Engineering and Design

Current: Schematic Design

Utility Coordination

- Coordinate with Con-Ed
- Coordinate with DEP (Sewer + Water)

BID Monthly Meetings

- Key Topics:
maintenance and operations, design,
events and programming, utilities and securities

Pedestrian Safety + Emergency Access

- NYPD Coordination
- FDNY Coordination

MEMORIAL ARCH RESTORATION UPDATES

Kimlau Memorial Arch Restoration: SEP - OCT



October 2025



- **Construction fencing up**
- **Cobblestones removed to expose foundations that were unexpected and atypical.**
- **Parks recommends further excavation**

Kimlau Memorial Arch Restoration: NOV - DEC



November 2025

- **Further excavation confirmed no poured foundation.**
- **Concrete work to create wider foundation on the south column, and level surfaces on both columns.**



Kimlau Memorial Arch Restoration: JAN - FEB



January 2026



- **Cobbles reinstalled and scaffolding installed. Example mortar removal submitted to LPC.**
- **Found the roof and cornice were solid granite, without a void as expected.**
- **Awaiting change order approval for larger piece of rigging equipment than originally specified.**

Kimlau Memorial Arch Restoration: JAN - FEB



Summer 2026: Anticipated completion of capital project



NYC Parks

DISCUSSIONS

Timeline

