

Ports, Waterfront, and Transportation

2025–2026

NYC / EDC





New York City Economic Development Corporation develops the City's freight and passenger transportation infrastructure to strengthen the region's economic growth, while connecting New Yorkers to well-paying jobs.

NYCEDC's facilities include marine cargo terminals, cruise terminals, aviation assets, rail assets, maritime piers and wharfs, ferry landings, and offshore wind staging ports across New York City's five boroughs.

Marine Cargo Terminals

New York City's ports are America's gateway to the largest and wealthiest consumer market in the United States. NYCEDC supports the local economy by enabling firms to bring goods to market by vessel, one of the most efficient modes of freight transportation.

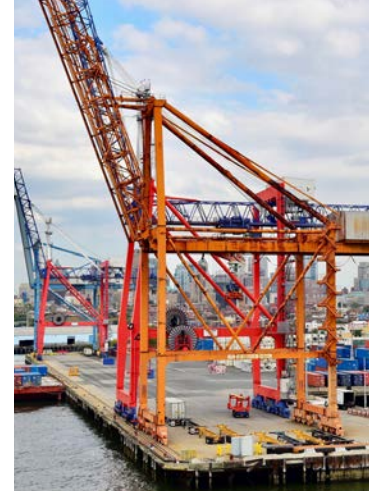
Ongoing infrastructure upgrades to marine cargo terminals are expected to further increase capacity, allowing for an even greater volume of cargo to be moved by water rather than by truck. The City promotes and incentivizes the maritime industry by maintaining and leasing these facilities and designating them **Significant Maritime and Industrial Areas** via the NYC Department of City Planning's Local Waterfront Revitalization Plan and NYC Comprehensive Waterfront Plan.

Cargo Facilities

- **South Brooklyn Marine Terminal** (offshore wind staging port and project cargoes), in the Sunset Park neighborhood of Brooklyn
- **Brooklyn Marine Terminal** (containers, break-bulk, and ro-ro), in the Red Hook neighborhood of Brooklyn
- **25th Street Freight Pier** (aggregate), in the Sunset Park neighborhood of Brooklyn



New York City is a maritime hub for support services hosting tugs, barges, and major ship repair facilities.



The Red Hook Container Terminal on the Brooklyn waterfront serves as a major gateway for food and beverage importers in New York.

Cruise Terminals

Cruise NYC manages the Manhattan and Brooklyn cruise terminals, which continue to host ships from a wide range of cruise lines. In 2024, the two terminals welcomed over 1.52 million passengers, generating approximately \$509 million in economic impact and supporting 2,935 full-time jobs.

Cruise NYC is also a proud member of the Cruise Canada New England (CCNE) alliance, which represents over 100 ports of call—ranging from large, internationally recognized destinations to smaller, hidden gems—as well as key homeports across three U.S. states, five Canadian provinces, and one French overseas territory.

Cruise itineraries include destinations like Bermuda, Canada, New England, Europe, the Caribbean and world cruises.

Cruise Terminals

- Manhattan Cruise Terminal
- Brooklyn Cruise Terminal



Brooklyn Cruise Terminal



Manhattan Cruise Terminal

Aviation

NYCEDC manages a range of city-owned aviation facilities, including two heliports, a seaplane base, and the leases for the city's airports.

The city's aviation infrastructure facilitates the movement of goods and people in addition to serving as key nodes for emergency response operations. Recently, NYC has positioned itself as a leader in advancing the adoption of sustainable aviation technologies, including actively preparing for the transition to quiet, zero emission electric flights.



Seaplane landing in the East River by the Skyport Seaplane Base

Aviation Facilities

- Downtown Skyport (JRB)
- East 34th Street Heliport (6N5)
- Skyport Seaplane Base (6N7)
- LaGuardia Airport (LGA)
- John F. Kennedy International Airport (JFK)



Rendering of the New Terminal One at JFK



Visualization of the Downtown Skyport
as a sustainable, multi-modal
transportation and logistics hub.
Credit: Downtown Skyport

Rail

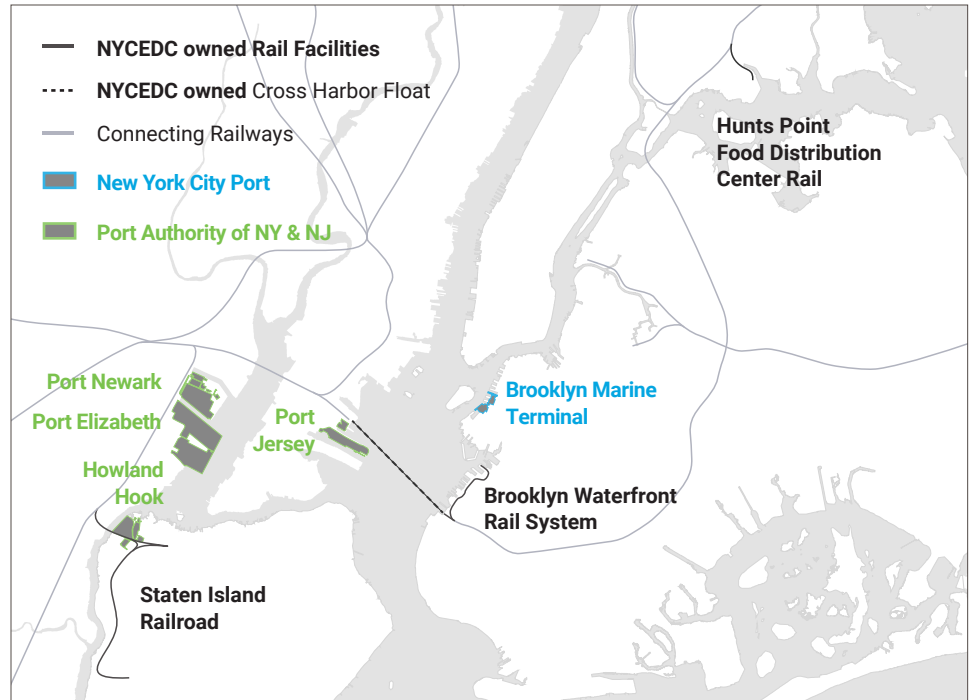
NYCEDC develops and manages the City's freight rail infrastructure by partnering with railroad operators to increase the movement of goods over rail and reduce roadway congestion in NYC. Rail in NYC serves a critical role importing food and beverage and exporting waste while minimizing vehicle miles traveled (VMT) on local roads.

Through its initiatives, NYCEDC optimizes rail transportation's economic and environmental efficiencies by lowering transportation costs for local businesses. New York City residents benefit from reduced congestion on local streets, less wear-and-tear on highway networks, and improved air quality.



A New York New Jersey Railroad locomotive plies the 65th Street Rail Yard. The Cross Harbor Transfer Bridge is seen at back left, ready to load railcars hauling items such as lumber or Balcones Recycling scrap metal when the barge arrives.

New York City Economic Development Corporation



Rail Facilities

- Staten Island Railroad, including:
 - Arlington Rail Yard and the Arthur Kill Lift Bridge
- Hunts Point Food Distribution Center Rail
- Brooklyn Waterfront Rail System:
 - Cross Harbor Float Bridge
 - 65th Street Rail Yard
 - Bush Terminal 51st Street Rail Yard
 - South Brooklyn Marine Terminal Yard

The Arthur Kill Lift Bridge provides direct access to Staten Island for Conrail, CSX, and Norfolk Southern. Major sources of traffic include Howland Hook Marine Terminal container traffic and Department of Sanitation Waste Export



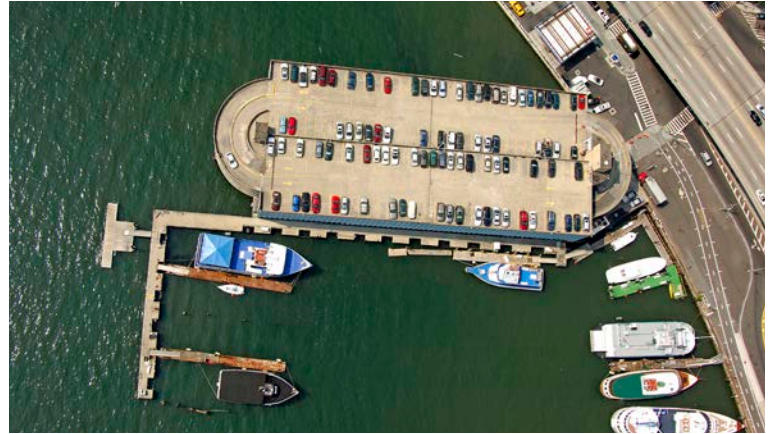
NYC Public Berth Sites

NYCEDC manages numerous piers, wharfs, and docks across NYC and works to streamline the permitting and berthing process. Across 12 berthing sites, public berths offer a range of amenities and utilities throughout the New York Harbor and accommodate a variety of vessel uses including waterborne transportation, recreational, educational, commercial, non-profit, historic, and cultural uses.



Pier 4 at Brooklyn Army Terminal

New York City Economic Development Corporation



Skyport Marina

Brooklyn

- Atlantic Basin
- 23rd Street Wharf
- 29th Street Pier
- Brooklyn Army Terminal Pier 4
- Mill Basin

Manhattan

- Skyport Marina
- Skyport Seaplane Terminal
- Pier 36
- West Harlem Piers

Queens

- North Henry Marginal Street

Staten Island

- Homeport
- Pier 1

Ferry Landings

NYCEDC maintains 25 ferry landings and facilities throughout the city, supporting passenger ferry services.

These ferry services have unlocked the economic potential of the city's emerging waterfront communities, supporting millions of passenger journeys by facilitating frequent, dependable, and affordable service to and between the five boroughs. By providing affordable and convenient transportation options for neighborhoods with limited access, ferries reduce commute times, enhance access to the city's waterfronts, support growing communities, and increase the resiliency of NYC's transportation network.



Bronx

- Ferry Point Park/Throggs Neck
- Soundview

Brooklyn

- Bay Ridge
- Brooklyn Army Terminal/ Sunset Park
- Brooklyn Bridge Park Pier 6
- Brooklyn Navy Yard
- BO/Fulton Ferry Landing
- Homeport 1
- Homeport 2
- Red Hook
- North Williamsburg/ North 6th Street
- South Williamsburg/ Schaefer Landing

Manhattan

- Battery Maritime Building
- Corlears Hook
- East 34th Street
- East 90th Street
- Pier 11/Wall Street
- Pier 79
- Roosevelt Island
- Stuyvesant Cove

Queens

- Astoria
- Hunter's Point South
- Long Island City
- Rockaway Beach 108th Street

Staten Island

- St. George

*NYCEDC manages Pier 11, E34th Street, Pier 79, the Battery Maritime Building, and Brooklyn Navy Yard on behalf of other City agencies.



Foreign Trade Zone Program

NYCEDC oversees Foreign Trade Zone (FTZ) No. 1, the first foreign trade zone established in the United States in 1937.

FTZs are sites designated by the federal FTZ Board to encourage local commercial activity by allowing delayed or reduced duty payments on imports and duty-free treatment for re-exported items, as well as other savings.

Industries of all types can benefit—construction, food production, fashion, luxury goods, green tech, and pharmaceuticals to name a few.



Foreign Trade Zone Program NYC/EDC

If you're in business in New York City, receiving a Foreign Trade Zone (FTZ) designation can save your company money. Do you warehouse, repack, or produce using imported goods? If so, you can realize substantial savings.

The FTZ program allows you to defer or reduce duties on imports and provides duty-free status for re-exported items. Industries of all types can benefit—construction, food production, fashion, luxury goods, green tech, and pharmaceuticals to name a few.

New York City Economic Development Corporation Connecting New York to the Global Economy 408-724

More information about a FTZ designation available at edc.nyc/program/foreign-trade-zone-program



Maritime and Aviation Career Awareness

The future of maritime, working waterfront, aviation, and renewable energy industries relies on a well-trained workforce. NYCEDC takes active steps to ensure that New Yorkers have access to industry education and skills training that lead to good-paying, long-term job opportunities.

Every year, NYCEDC hosts career awareness fairs for high school and college students to connect with industry professionals, tour infrastructure, and learn about the industries that use New York City's Waterfront.

NYCEDC partners with businesses, vessel operators, unions, local high schools, and secondary and postsecondary educational programs to highlight career pathways into the industries that use NYC's water dependent assets.

NYCEDC also partners with local educational institutions such as Vaughn College and Aviation High School to prepare the workforce for new technologies in the aviation field including but not limited to drones and eVTOLs.

Additionally, NYCEDC works with partners such as the Southwest Brooklyn Industrial Development Corporation, Workforce1 Centers, SUNY Maritime, Kingsborough Community College, and the International Longshoremen's Association to support adults entering the industry and navigating waterfront credentialing.

The Harbor of the Future

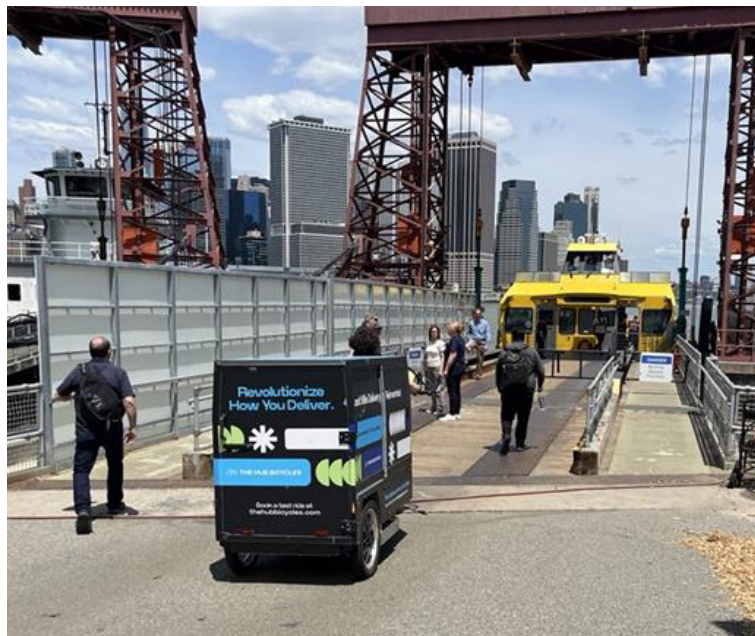
Through our initiatives, we're working to ensure the long-term health of the maritime and freight industries in NYC and the city's economy as a whole. Some of our efforts include:

The Green Economy Action Plan

The green economy in NYC will host nearly 400,00 jobs by 2040, anchoring a prosperous, equitable, and just future for New Yorkers. NYCEDC is mobilizing, accelerating, and channeling private sector action, attracting and incubating a critical mass of companies in the green economy.

Blue Highways

This interagency initiative aims to restructure freight distribution in NYC, shifting deliveries from roadways to waterways to create a robust and interconnected freight network that supports zero-emission transportation for middle-to-last mile deliveries and reduces the city's overreliance on trucks. NYCEDC is working to activate key city-owned waterfront sites to support the transformation of commercial transport—resulting in goods and commodities moving off roadways onto waterways to achieve a greener city with reduced roadway congestion and pollution reduction.



A Blue Highways pilot project moving freight via cargo bikes aboard a ferry from Governor's Island and Red Hook.

Offshore Wind

NYC is committed to achieving 100% clean electricity by 2040 and carbon neutrality by 2050. Offshore wind is leveraging the city's maritime infrastructure assets, its world-class human capital, and its innovation industry capacity across all sectors, while prioritizing equity to advance offshore wind projects.

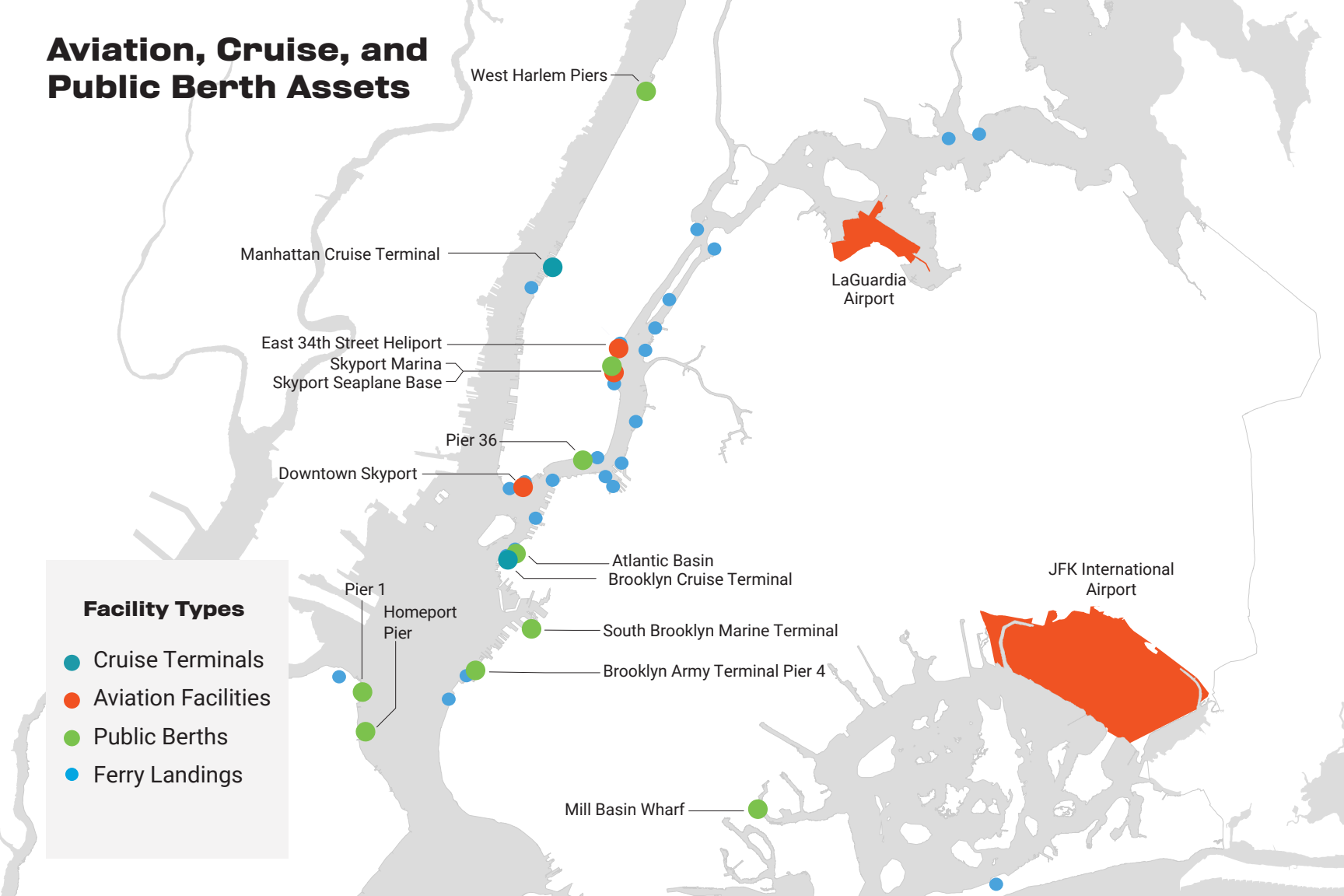


Rendering of the Offshore Wind Staging Port at South Brooklyn Marine Terminal, Brooklyn, NY—a key hub supporting New York's transition to clean energy. *Rendering courtesy of Equinor*

Aviation, Cruise, and Public Berth Assets

Facility Types

- Cruise Terminals
- Aviation Facilities
- Public Berths
- Ferry Landings



Rail and Cargo Assets

Facility Types

- City-owned Rail Facilities
- Connecting Railways
- Cargo Facilities

Designated Industrial Areas

- Significant Maritime Industrial Area (SMIA)
- Industrial Business Zone (IBZ)

Arthur Kill
Lift Bridge

Arlington Rail Yard

Staten Island
Railroad

Hunts Point Food
Distribution Center Rail

Red Hook Container Terminal

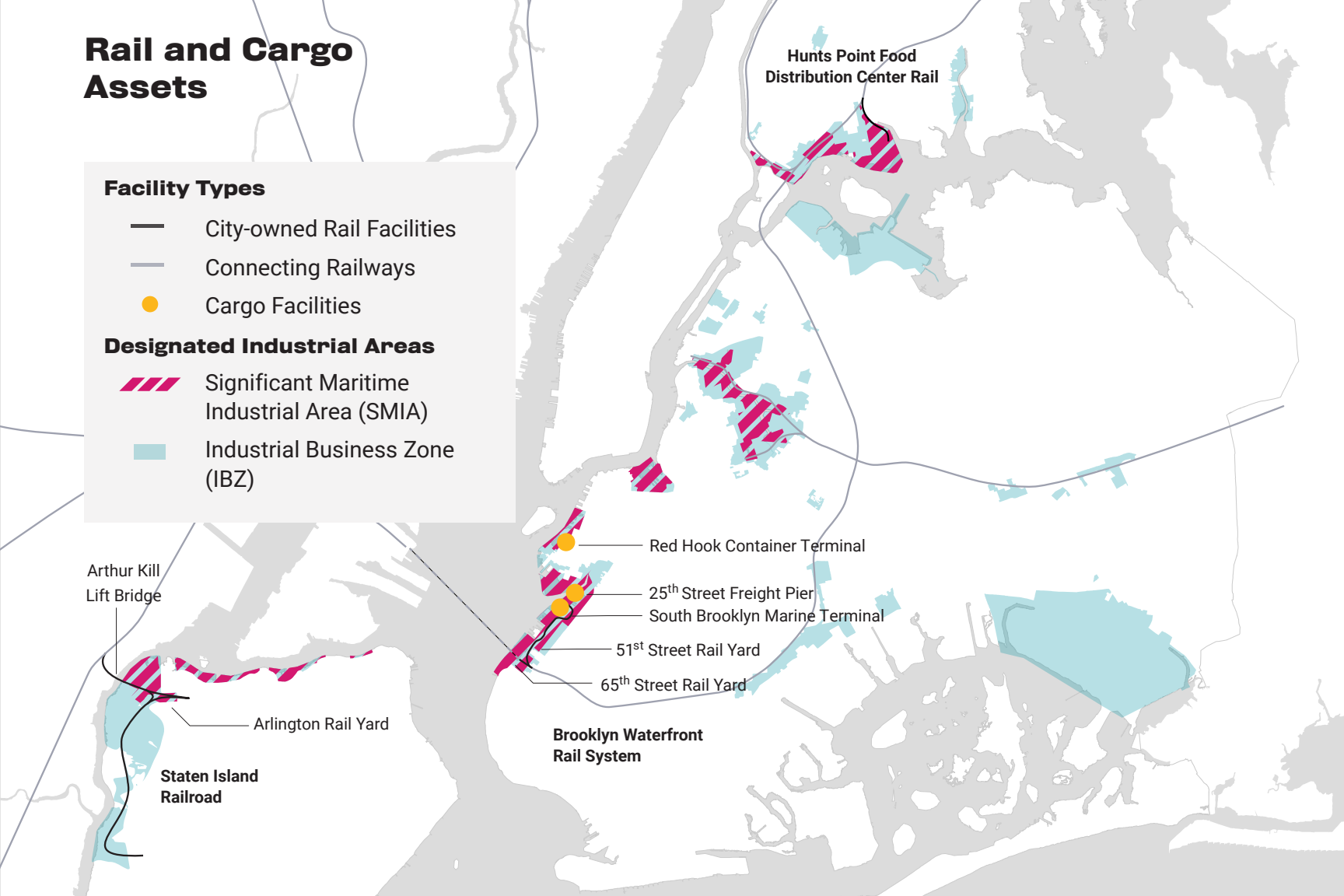
25th Street Freight Pier

South Brooklyn Marine Terminal

51st Street Rail Yard

65th Street Rail Yard

Brooklyn Waterfront
Rail System



NYCEDC Ports, Waterfront, and Transportation Assets

