

+ Manhattan Cruise Terminal Master Plan



Public Workshop
January 28, 2025





Welcome

Tara Das, NYCEDC

Assistant Vice President
Government and Community Relations

Agenda

START	DURATION	DESCRIPTION
6:10	5 min	Opening Remarks
6:15	10 min	Master Plan Overview
6:25	25 min	Case Studies
6:50	60 min	Activity
7:50	10 min	Closing Remarks



Our Project Partners

HATCH



The MCT Master Plan

What is it?

A long-term actionable, holistic framework that:

- Assesses current infrastructure, commercial agreements, operations, and plans
- Defines market opportunities
- Identifies and evaluates development scenarios that create positive outcomes
- Guides future infrastructure development



Image Source: Hatch

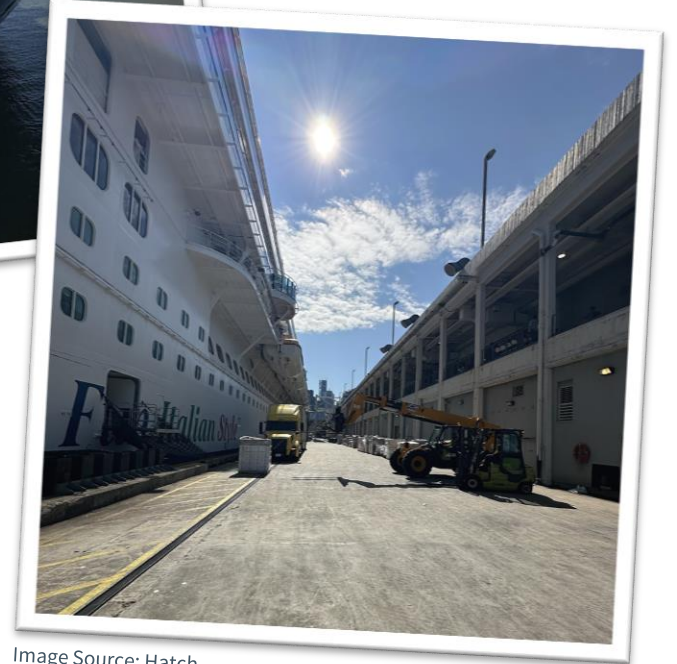


Image Source: Hatch

The MCT Master Plan

What it's not

- + The MCT Master Plan is not:
 - An iron-clad, absolute checklist
 - A final plan for all development

- + Nor is it:
 - A marketing plan
 - A business plan
 - An operations plan
 - An engineering design effort



Image Source: NYCEDC

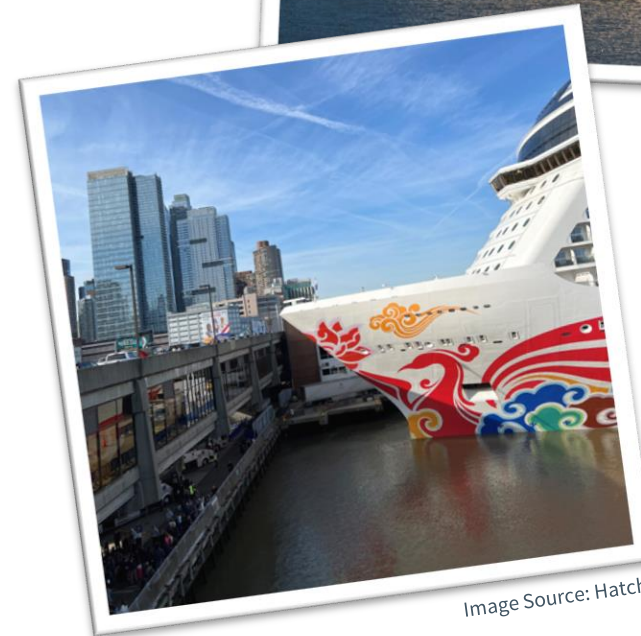


Image Source: Hatch

+ Timeline

Public Workshop 3:

March 2025

Stakeholder Interviews:

Ongoing in Winter 2025

Online Survey:

Live until February 28, 2025

Master Plan Published:

Spring 2025

In parallel, the consultant team is conducting technical expert interviews, performing a market study and traffic analysis, and evaluating the existing infrastructure.



Image Source: Cruise NYC

MCT Master Plan Study Area

Image Source: Google Earth, 2024



Public Workshop 1 Feedback

- + **Decongest MCT's entrance and create more room for cruise passengers and pedestrians**
 - Increase space for pedestrians, particularly when a vessel is not in port
 - Create designated rideshare pickup areas
- + **Improve pedestrian and cyclist safety on 12th Avenue**
 - Widen the pedestrian/bike path
 - Increase signage and wayfinding
- + **Improve the pedestrian crossings on 12th Avenue**
 - Signal timing is not sufficient for passengers crossing with luggage
- + **Implement shore power**
 - Enhance terminal sustainability, especially for vessels while berthed
- + **Improve east-west transit connections from MCT to Midtown**
 - Improve the pedestrian experience along adjacent east-west streets
 - Increase public transit service to bring passengers to subway stations
- + **Increase public access to MCT and expand its public realm**
 - Create a vibrant space surrounding the terminal including green space for recreation



Image Sources: Karp Strategies

Public Workshop 2 Goals

- + Understand key considerations for cruise terminal layout
- + Review case studies of terminals around the world that have incorporated varying levels of public realm interventions
- + Hear your priorities for public realm interventions at MCT across several categories through an interactive scoring exercise



MCT Surrounding Area

Pier 84 at HRP

Pier 88

Pier 90

Pier 92

Pier 97 at HRP

Future Pier 94 Lookout

Clinton Cove at HRP

DeWitt Clinton Park

Image Source: Google Earth, 2024





Case Studies

Examples from around the world of cruise terminals with successful public realm integration

Case Studies Review



Special Considerations

Security compliance and commercial rules of thumb



Design Interventions

Explore design strategies – what works?



Case Studies

Sample of ports highlighting the design interventions

Case Studies Review



Special Considerations

Security compliance and
commercial rules of thumb



Design Interventions



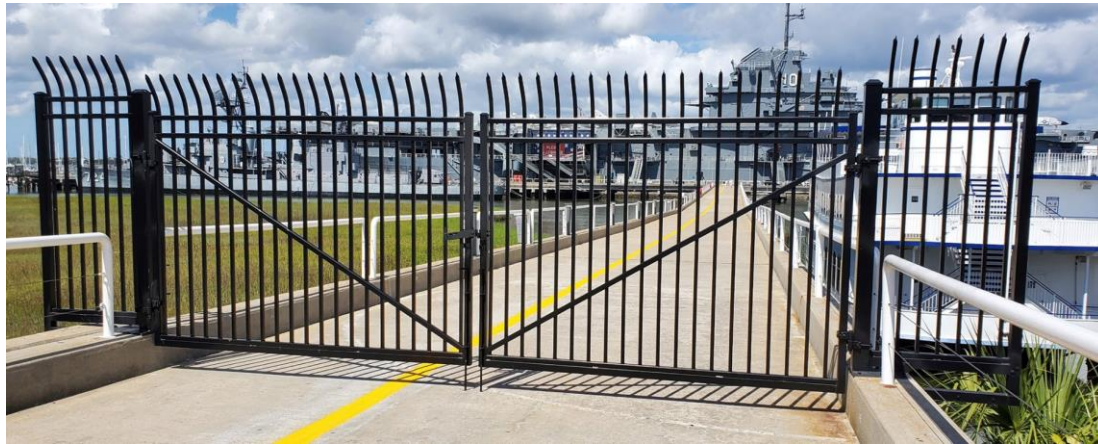
Case Studies

Security Considerations



- The International Maritime Organization (IMO) sets standards for safety, security, and environmental performance of international shipping
- MARSEC (Maritime Security) is a three-tiered system used by the United States and Canada to communicate the level of maritime security threat.

MCT MP | Security Considerations



- The Facility Security Plan is a **flexible and scalable plan for a specific Port Facility.**
- The Plan requires layers of security barriers and modified processes that can be deployed at each elevated MARSEC level.
- The Plan is a risk-based analysis and allows for **creative solutions**.
- Precedent for conversion of secured wharf spaces to public use on non-cruise days.

Commercial Considerations



- Commercial Downtime associated with Port Activities is not conducive to commercial enterprise.
- Cannot depend on cruise passenger patronage as they have an all-inclusive package awaiting them.
- Vessels typically in Port from 6am-5pm.
- Most successful are evening-based activities with active walk-up clientele.

Case Studies Review



Special Considerations

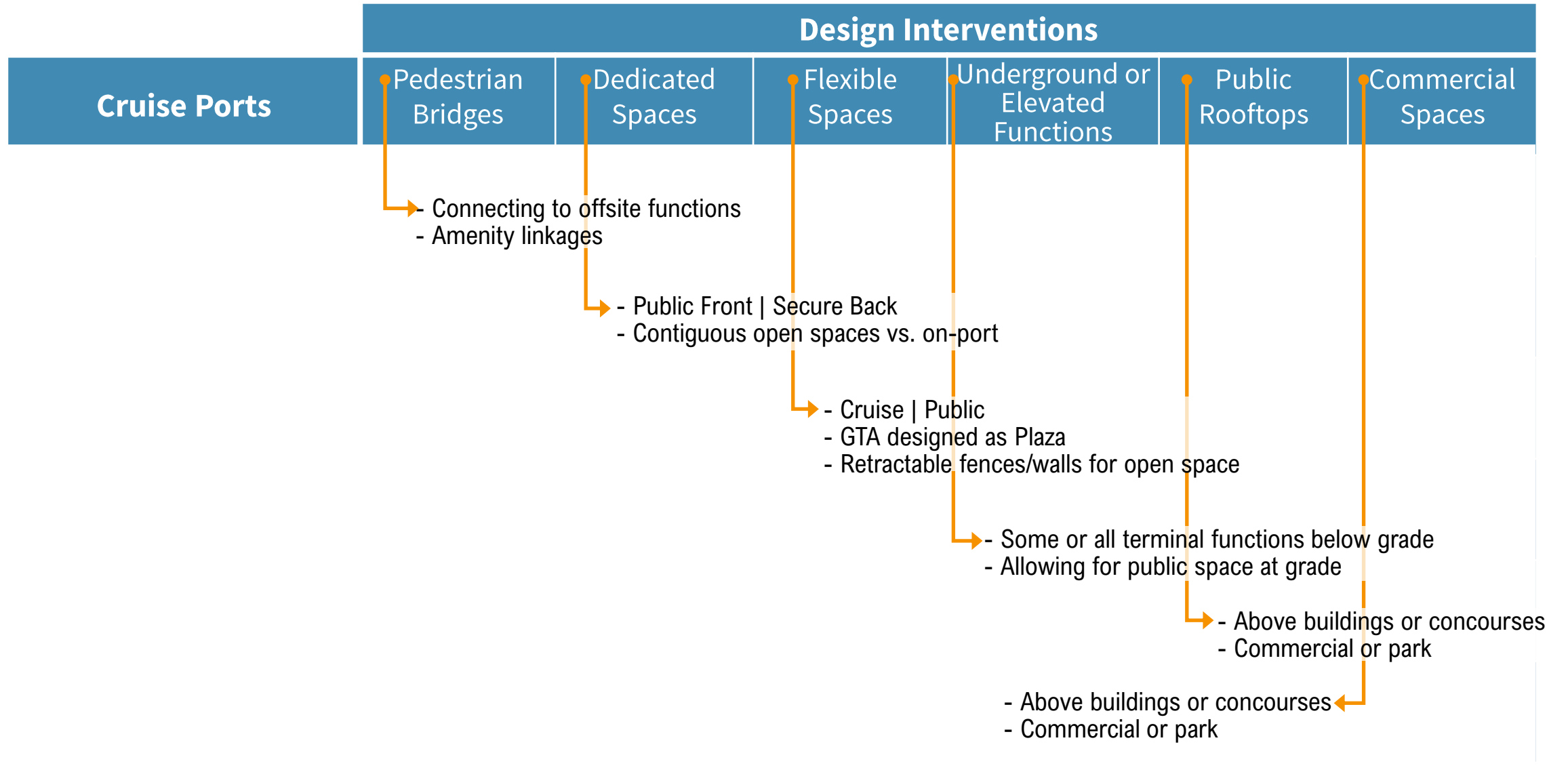


Design Interventions

Explore design strategies –
what works?



Case Studies



Case Studies Review



Special Considerations



Design Interventions



Case Studies

Sample of ports highlighting
the design interventions

Design Interventions

Cruise Ports

Pedestrian
Bridges

Dedicated
Spaces

Flexible
Spaces

Underground or
Elevated
Functions

Public
Rooftops

Commercial
Spaces

Public
Intervention
Intensity

Canada Place



San Francisco



Sydney



Galataport



Hong Kong



Dublin



Cruise Ports		Pedestrian Bridges	Dedicated Spaces	Flexible Spaces	Underground or Elevated Functions	Public Rooftops	Commercial Spaces
Canada Place			●		●	●	●
San Francisco				●			
Sydney				●			●
Galataport				●	●	●	●
Hong Kong			●			●	
Dublin		●		●			●

Canada Place, Vancouver



Public Rooftops

Top - Public

Commercial Spaces

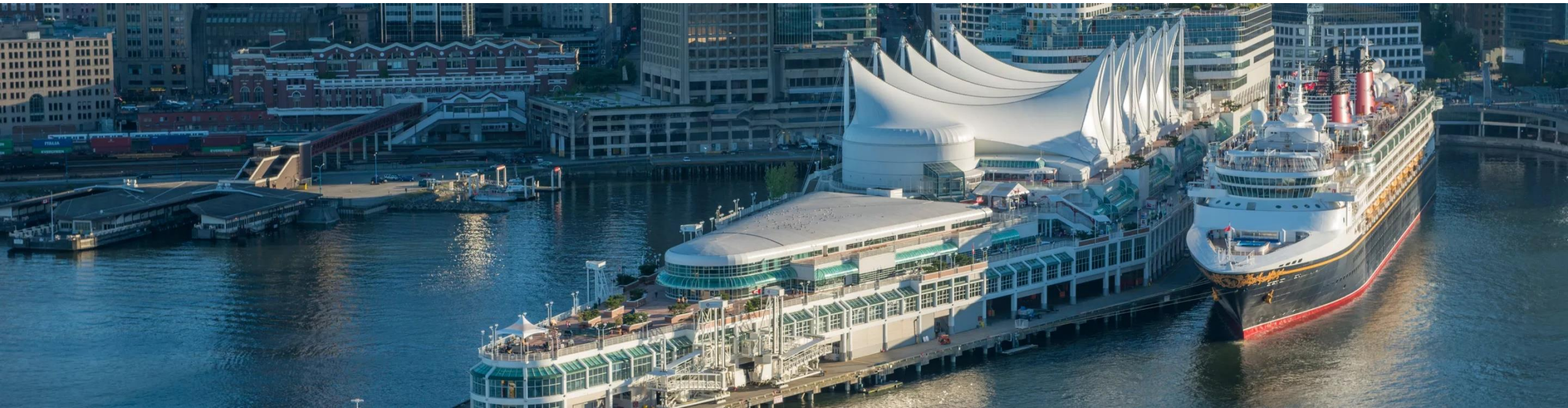
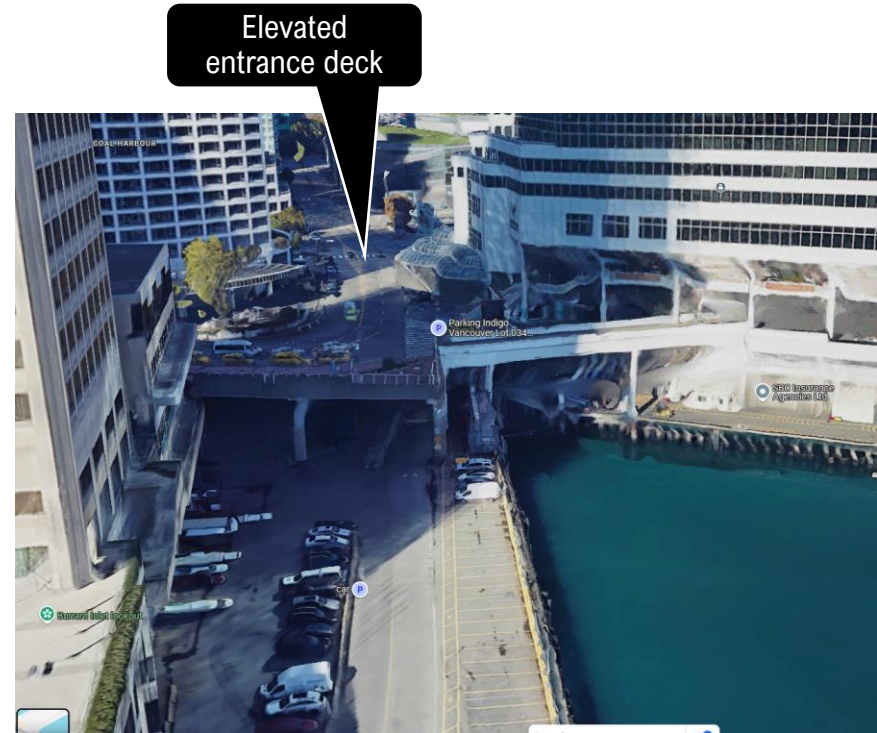
Dedicated Spaces

Bottom - Secure

Terminal functions below the public plane

Underground or Elevated Functions

Canada Place, Vancouver



Canada Place, Vancouver



San Francisco Pier 27



Flexible Space

Retractable fence, allowing waterfront access on off-cruise days

San Francisco Pier 27

Open fence on off-cruise days



Closed fence on cruise days



20m waterfront available to the public on off-cruise days

Sydney Overseas Passenger Terminal



Flexible Space

Commercial

Sydney Overseas Passenger Terminal

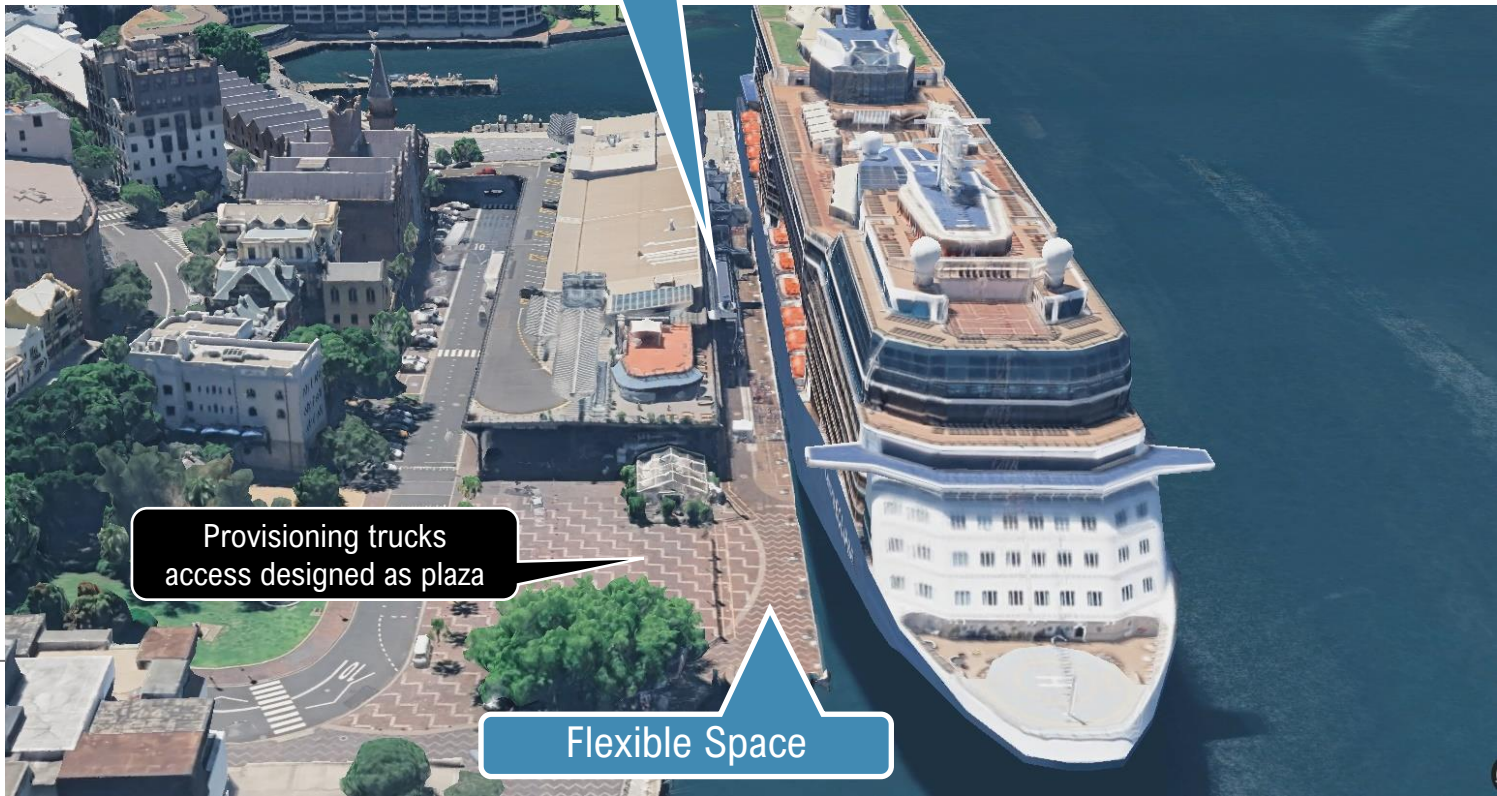


Commercial



Public waterfront opens views to the Opera House

Commercial space with prime views



Provisioning trucks access designed as plaza

Flexible Space

Sydney Overseas Passenger Terminal



Galataport, Istanbul



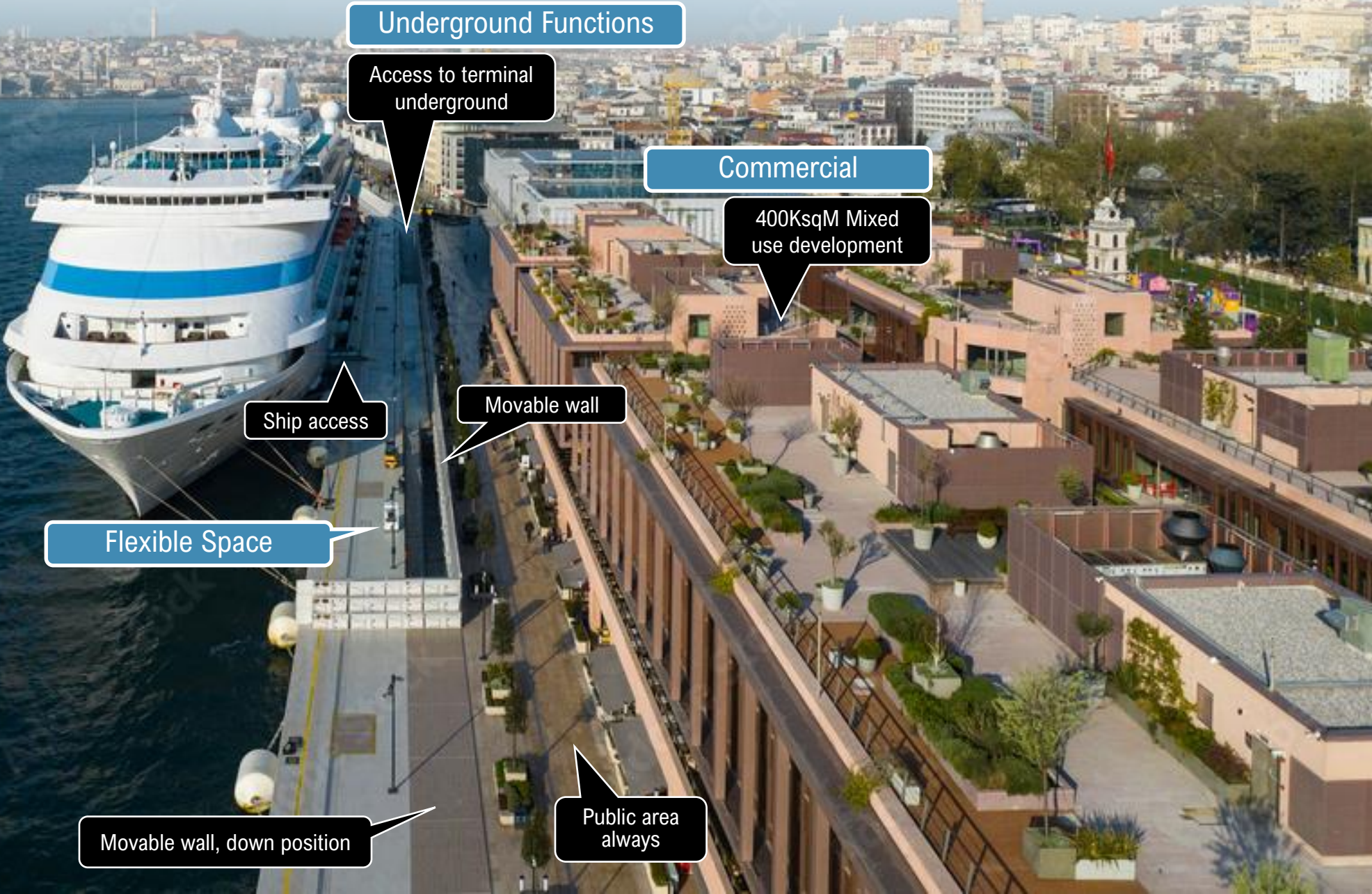
Flexible Space

Commercial

Underground Functions

Galataport, Istanbul

Adobe Stock | #597375676



Underground Functions

Access to terminal underground

Commercial

400KsqM Mixed use development

Ship access

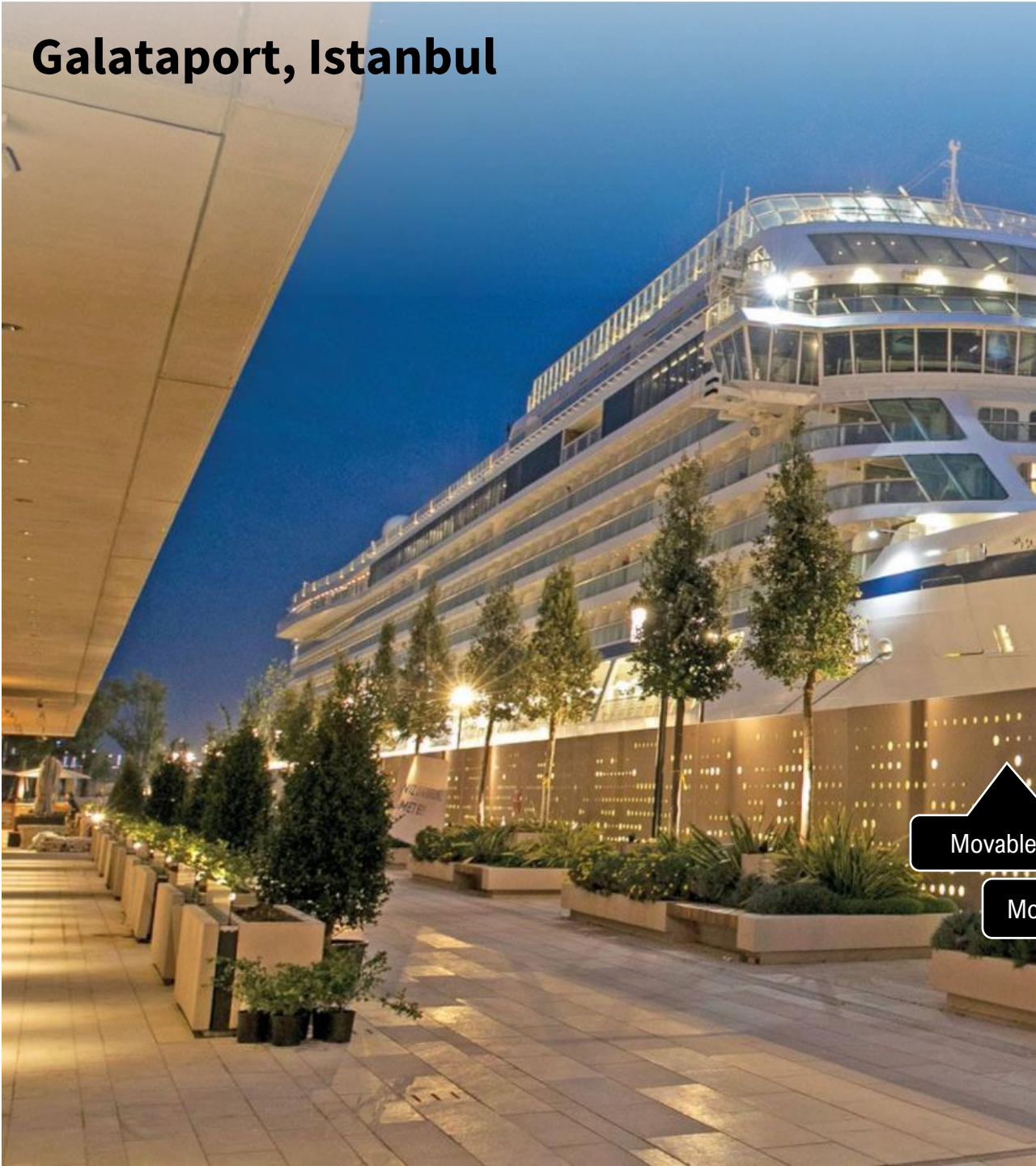
Movable wall

Flexible Space

Movable wall, down position

Public area always

Galataport, Istanbul



Movable wall, up position

Movable wall, down position



Wall up during cruise

Hong Kong Kai Tak Cruise Terminal

Public Rooftops

Front – Public

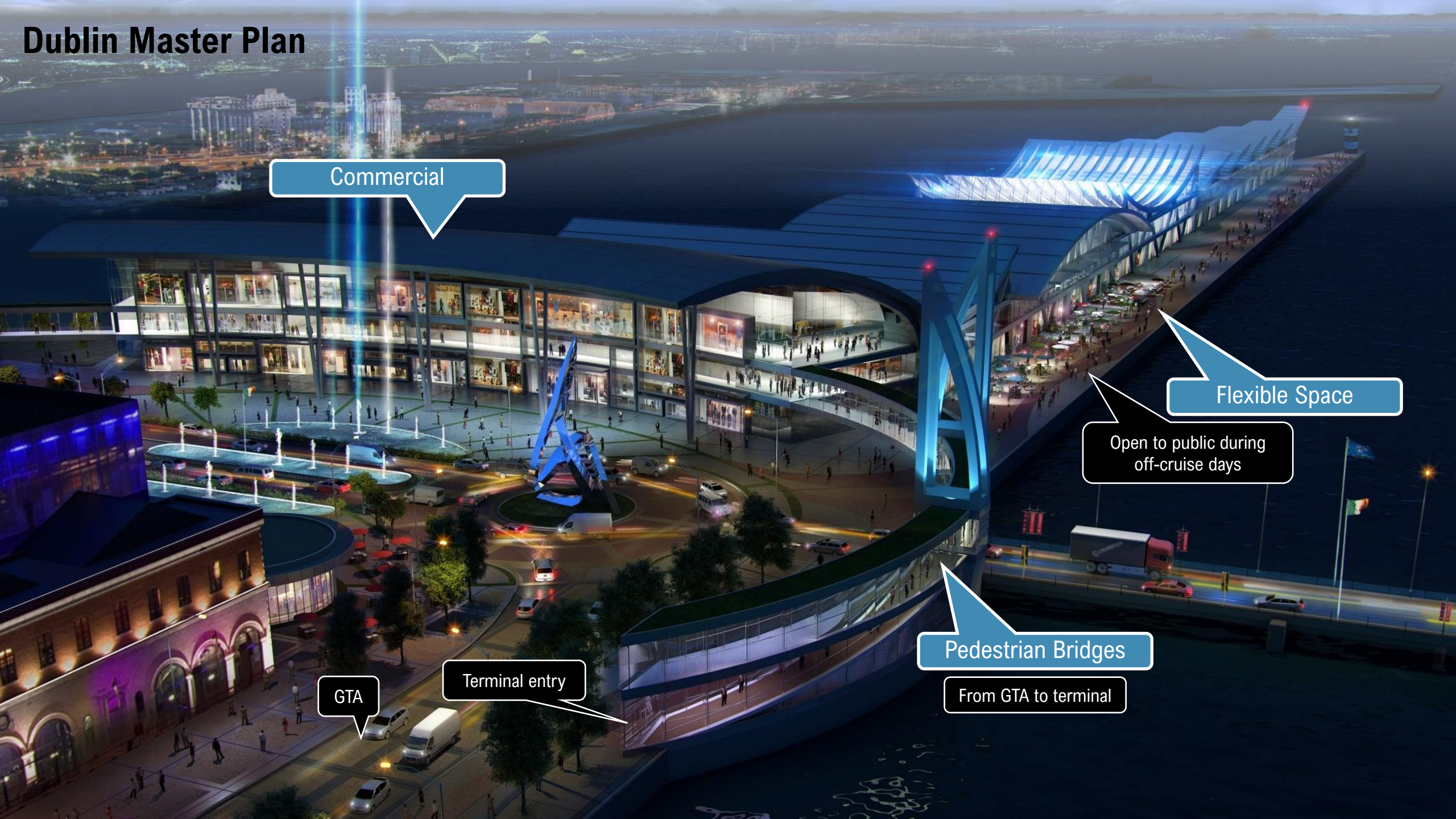
Dedicated Spaces

Back – Secure

Building as secure perimeter



Dublin Master Plan



Commercial

Flexible Space

Open to public during off-cruise days

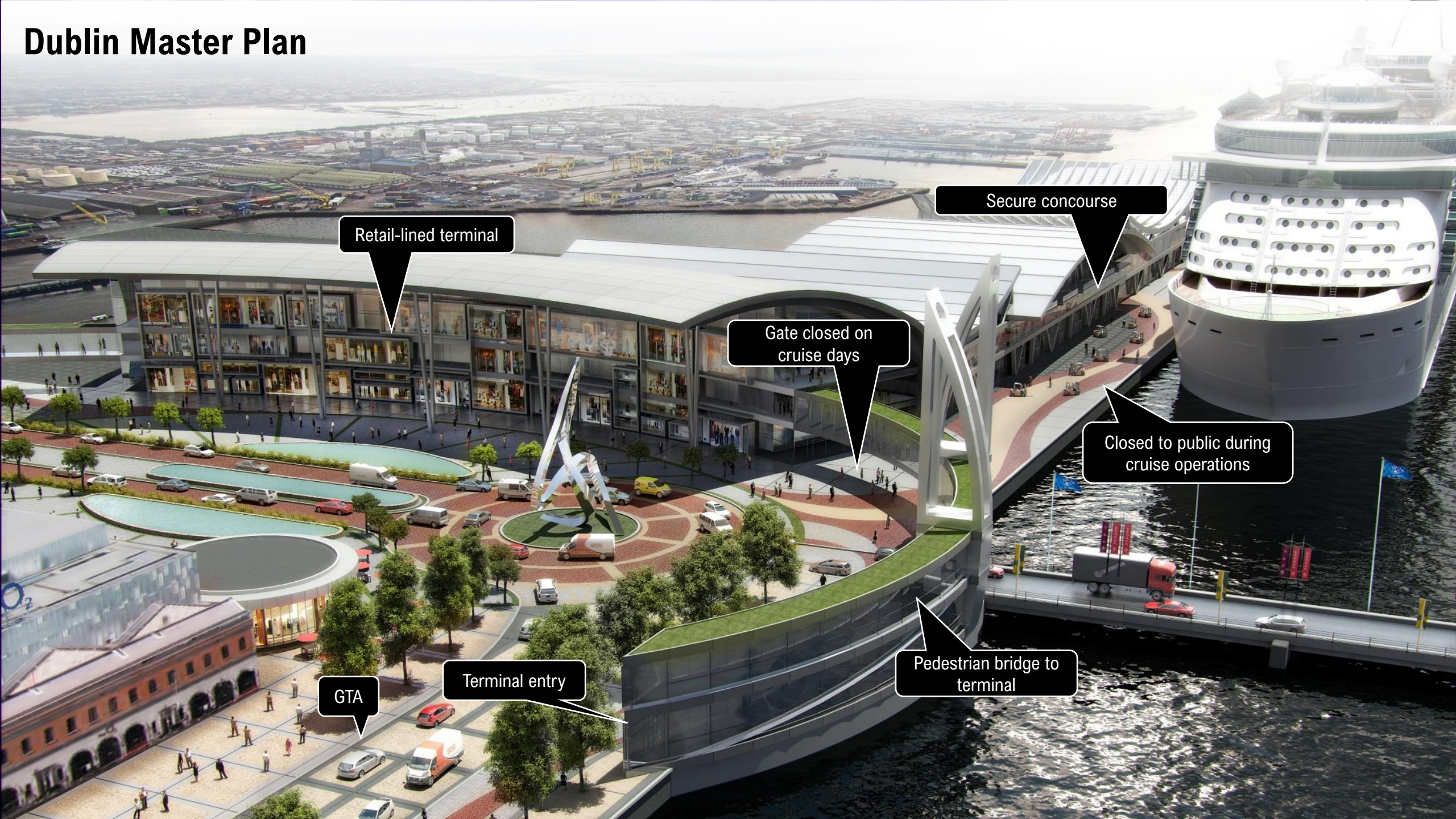
Pedestrian Bridges

From GTA to terminal

Terminal entry

GTA

Dublin Master Plan



Retail-lined terminal

Secure concourse

Gate closed on cruise days

Closed to public during cruise operations

Pedestrian bridge to terminal

Terminal entry

GTA



Interventions Activity

Lead: Karp Strategies



Interventions Activity

- 1** **Introduction to Interventions Activity**
10 min
- 2** **Disperse to Assigned Groups and Stations**
5 min
- 3** **Interventions Activity**
50 min

Introduction to Interventions Activity

Sustainability

Implement sustainable practices to reduce the site's environmental impact.

Traffic & Congestion

Improve traffic flow and safety, and reduce congestion through street design and wayfinding.

Activations & Retail

Drive local commerce and engagement with diverse retail and activities.

Streetscape

Create vibrant and accessible spaces that foster community interaction.

About the Interventions

Where did these interventions come from?

- Public Workshop 1: Several of these interventions were directly recommended by workshop participants.
- Best practice research: Some of these strategies have been used in other places to counter or mitigate problems identified by workshop participants.

How will these interventions be used?

- Based off the feedback collected today and through the Online Survey and Interviews, we will develop an initial list of recommendations that will be previewed at Public Workshop 3 to collect a final round of feedback and input.
- Today, participants will have the opportunity to highlight their preferred interventions and suggest interventions that have not been brought up yet.



Reminders

1 Where are these interventions from?

These interventions were either directly recommended by participants during the first Public Workshop or emerged from our own research into best practices.

3 These are interventions being considered for the Master Plan

Final interventions will be based on your preferences, cost, feasibility, and other trade-offs. While some interventions are guaranteed, others are not, and community priorities will help guide these decisions.

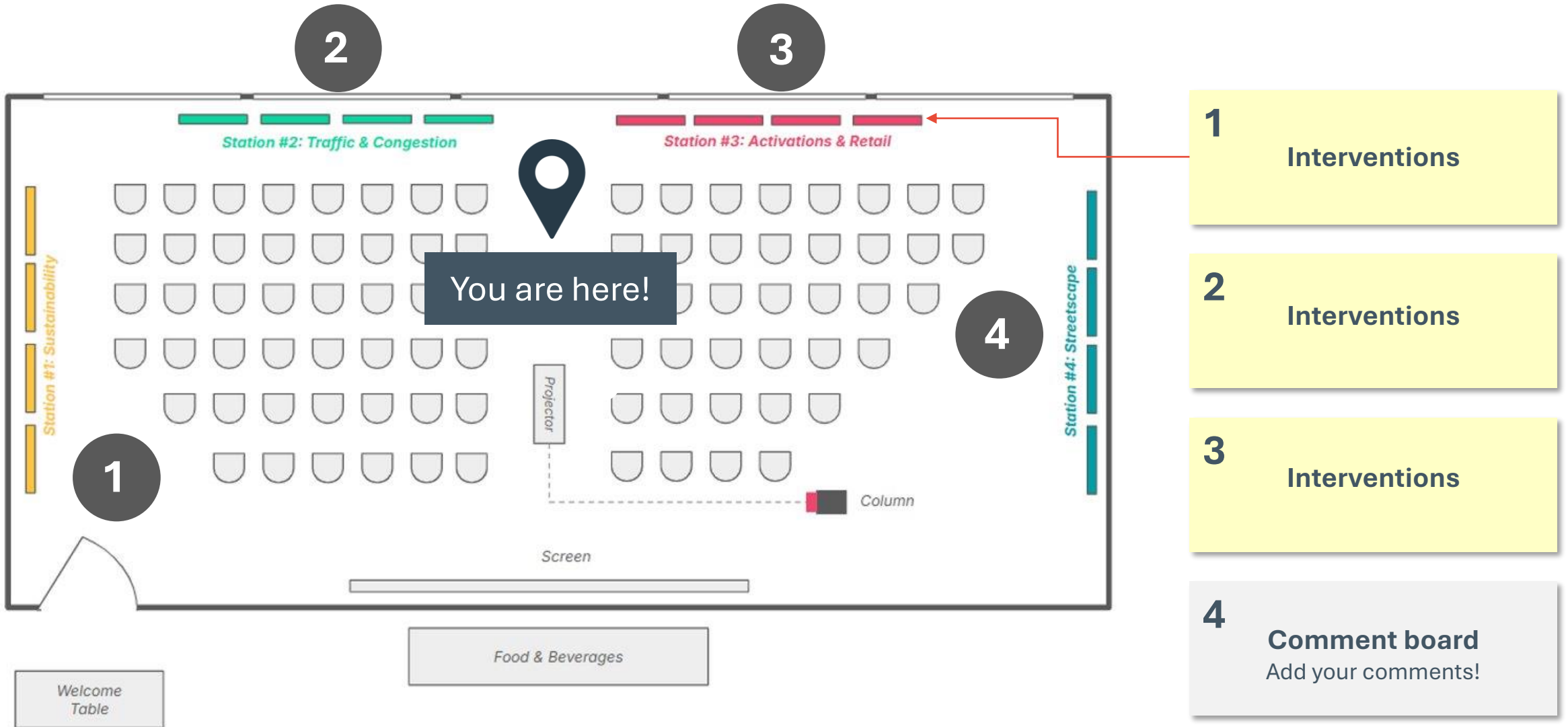
2 This is not a complete or finalized list!

If there are any interventions that are missing from these boards and that you feel strongly about, please add them to the comment boards at each station.

4 Images are not indicative of actual outcomes

The images shown on these boards are examples of these interventions from other location and are only meant to be representative.

Interventions Activity: How to Participate



Interventions Activity: How to Participate

On the first **three** boards...

Give each intervention a score based on your preference for it!

Give only **one score** to each intervention.

Project complexity refers to the difficulty and interdependency of implementing the intervention, with **high complexity** requiring the most time, resources, and coordination, **medium complexity** involving moderate challenges, and **low complexity** being simpler to execute.


Manhattan Cruise Terminal Master Plan
Public Workshop #2

NYC/EDC CRUISE

Sustainability

Shore Power

Provides ships docked at a port with land-based electricity instead of using diesel engines, which can significantly reduce emissions from the berthed vessel. Shore power has been identified as a clear priority for the community and the city, and will be considered in all scenarios of the Master Plan.




Estimated Level of Complexity
High

Add your thoughts here!

1 Solar Power

Provides energy to power MCT buildings, offsetting energy costs in shared spaces while complying with green certifications. Potential locations may include rooftops of MCT piers.



Estimated Level of Complexity
Medium

How would you score this intervention?

1 LOW 2 3 4 5 HIGH

A red dot is placed under the number 1 on the scale.

Interventions Activity: How to Participate

On the **fourth** board...

Write your responses on sticky notes and add them to the board.

Sustainability

Manhattan Cruise Terminal Master Plan
Public Workshop #2

EDC CRUISE

Are there any **sustainability** interventions you would like to see implemented that you didn't see tonight?

Add your thoughts here!

In your opinion, what is the most important factor when choosing one **sustainability** intervention over another?

Add your thoughts here!

Do you have any other questions, concerns, or ideas regarding **sustainability** at Manhattan Cruise Terminal?

Add your thoughts here!

Community Agreements

- All ideas are welcome
- Share ideas in the way you feel comfortable
- One speaker at a time – let's have one conversation
- Critique ideas, not people
- This conversation is anonymous, not confidential



Station Assignments

Groups rotate every **12 minutes**.



In Groups

Interventions Activity

50 mins

Look Ahead

- **Public Workshop 3:** March 2025
- **Online Survey:** Live through February 28, 2025
(Scan QR Code Below)





Thank you.

For more information, please visit
<https://edc.nyc/project/manhattan-cruise-terminal-master-plan>

For any other questions or comments,
please contact MCTMasterPlan@edc.nyc.

