



# Chinatown Connections Overview

Chinatown Connections will redesign Kimlau Square – a critical access point to the neighborhood – into a safe and vibrant space that celebrates the community’s Chinese heritage, improves multimodal circulation into and around Chinatown, and supports local businesses. Chinatown Connections merges an \$11.5 million Downtown Revitalization Initiative (“DRI”) award from the New York State Department of State with \$48.3 million in New York City capital to deliver public realm improvements for residents and visitors alike.

## Reimagining Kimlau Square

Kimlau Square features a six-point intersection with complex traffic movements, which results in many conflict points that endanger drivers, cyclists, and pedestrians. In consultation with the local Chinatown community, the City has kicked off public engagement and a traffic study to reimagine Kimlau Square as a standard, four-way intersection with an expanded public space, shorter pedestrian crossings, and improved connections for bicyclists.

## Creating a Chinatown Welcome Gateway

The City will build a Chinatown Welcome Gateway in the vicinity of a redesigned Kimlau Square, finally giving one of New York City’s most historic districts the entrance it deserves. The Gateway will commemorate the neighborhood’s cultural heritage and draw visitors to local businesses. The size and design of the Welcome Gateway will be determined after a robust community engagement period.

## What else is part of Chinatown Connections?

### Street Improvement Projects for Park Row

Park Row is a critical walking and biking route connecting Lower Manhattan, Chinatown, the Brooklyn Bridge, and the new public space at the Brooklyn Bridge Arches. The City has completed Street Improvement Projects on the Park Row connection to Chinatown, between Frankfort Street and Kimlau Square.

## Who is Involved?

### Lead Agency: NYC Economic Development Corporation (EDC)

*Responsibilities: Managing planning, design, and construction.*

### Executive Agency: NYS Department of State

*Responsibilities: Administrative agency for the DRI grant awards.*

### Partner Agencies: NYC Parks, NYC DOT, NYC Cultural Affairs

*Responsibilities: Working with NYCEDC on project components to ensure implementation and delivery.*

### Working Group: Community Stakeholders & Elected Officials

*Responsibilities: Guiding the overall public engagement process and helping make decisions about the project’s design and implementation.*



### Chinatown Connections Timeline



### Chinatown Connections Working Group

Meetings around key milestones with a 25-member local stakeholder and elected officials group guiding public engagement and providing feedback on the broader process.

#### Community Stakeholders

Ammy Lim Cuccia (Chinatown resident & business owner) | American Legion – Post 1291 | Asian American Federation | Chinatown BID/LDC | Chinatown East Neighborhood Council | Chinatown Core Block Association | Chinatown Manpower Project | Chinese American Planning Council | Chinese Chamber of Commerce | Chinese Consolidated Benevolent Association | Community Board 1 | Community Board 3 | Confucius Plaza | Hamilton Madison House | Gotham Park | Park Row Alliance (Chatham Green and Chatham Towers) | Smith Houses | United Overseas Fujianese Association of America

#### Local Elected Officials

City Council Member Chris Marte | Manhattan Borough President Mark Levine | State Assemblymember Grace Lee | State Senator Brian Kavanaugh | Congressman Dan Goldman

### Chinatown Connections Subgroup

Meetings with a subset of the working group responsible for shaping the Welcome Gateway Design Brief.



# DESIGN VALUES

We are an interdisciplinary collective driven by collaboration, curiosity, and a community-focused approach to creating responsible, beautiful spaces that reflect shared values. Our works merge multiple disciplines including landscape, urban design, architecture, with a specialty working on shaping large scale, public realm projects in the complex urban environment of NYC.

# MARVEL



Campos Plaza II



Union Square Visioning Plan



Union Square Visioning Plan



Bronx Point- Waterfront Esplanade & Park



Financial District Streetscape + Security



Norris Square Park

## WHAT WE'VE HEARD ABOUT KIMLAU SQUARE

### PUBLIC SPACE

- Plaza is a central location for circulation into Chinatown.
- Space functions more like a traffic island than a public zone.
- Sidewalks lack space for pedestrians.
- It lacks adequate space for community activities.
- Unpleasant and noisy environment.
- Could benefit from new planting and paving improvements.

### SAFETY AND ACCESSIBILITY

- Square is dominated by traffic and has high volume of vehicular turning movements.
- Inefficient traffic signal timing.
- Pedestrians struggle to follow traffic signals.
- It lacks way-finding signage.
- Unsafe street crossings, especially at the five-point intersection.
- Insufficient safety measures for cyclists and pedestrians.
- Poor bike lane configuration causes cyclists to ride through Kimlau Square or on sidewalks to reach the bikeshare station on St. James Place.

## OUR TEAM

### LEGEND

MAIN CONTACT  
ADDITIONAL CONTACT



### CHINATOWN CONNECTIONS CONSULTANT TEAM









# LEARN HOW YOU CAN PARTICIPATE IN THE NEXT PHASE OF CHINATOWN CONNECTIONS!

## TABLING & POP-UPS



## WORKSHOPS



## SMALL GROUP ENGAGEMENT



## OPEN HOUSE



● PUBLIC MEETING #2 (3/29)

● LISTENING WORKSHOP (MAY)

● SHARE BACK WORKSHOP (JUNE)

● OPEN HOUSE

ONLINE SURVEY

TABLING & POP-UPS  
SMALL-GROUP  
ENGAGEMENT

PRE-DESIGN

CONCEPT DESIGN

SCHEMATIC DESIGN

PRELIMINARY DESIGN

FINAL DESIGN

May 2025

September 2025

January 2026

May 2026

Share your suggestions on how and where to engage!





# Welcome Gateway Design Brief

## What is it?

The Design Brief summarizes the project's context and guideposts for the Welcome Gateway design. It resulted from a 12-month community engagement period, including group discussions, tabling events, and public meetings. The document outlines the project's context, potential location, budget information, and overview of the artist selection process. Most importantly, the design brief proposes four guidelines that serve as parameters for the selected artist as they develop a Welcome Gateway design.

## Design Guidelines

### Multifaceted Experience

Ensure the Chinatown Welcome Gateway is not a monolith but an interactive experience that extends beyond its physical structure. The Gateway should create an engaging and multifaceted experience that resonates regardless of its size.

### Guiding Symbol

Design the Welcome Gateway to be a clear and recognizable symbol in Lower Manhattan, serving as a prominent entry point and wayfinding feature for Chinatown visitors.

### Gathering Space

Design the Welcome Gateway as an integral part of the community, creating a surrounding space that invites community members to gather, rest, and celebrate.

### Celebrate Heritage

The Welcome Gateway design should honor Chinatown's rich cultural heritage, celebrate its diversity, and foster a sense of belonging.



Example: The Gates in Central Park, Christo and Jeanne-Claude (1979-2005)



Example: NYC Chinatown Tourist Information Booth



Example: Hing Hay Park in Seattle, Washington



Example: Lunar New Year Parade at Kimlau Square



# Welcome Gateway Information

## What is it?

This is a public art piece intended to celebrate the Chinatown community in an expanded public space while also drawing visitors to the neighborhood. The Welcome Gateway reflects a longstanding community desire for an iconic symbol that demarcates the entrance to Chinatown, celebrating the community’s heritage.

## Where will it be?

The new structure will be located in a redesigned **Kimlau Square**. The Welcome Gateway will coexist with two monuments in Kimlau Square: the **Kimlau War Memorial Arch** and the **Lin Ze Xu Statue**.

## How will the Artist be selected?

NYCEDC, in partnership with DCLA, will follow the NYC Percent for Art process for this commission. The artist will be selected through an artist/architect collaboration model, ensuring integration within the Kimlau Square redesign.

## What are the selection criteria?

**Selecting the gateway designer will be heavily informed by the community engagement process and will include the following criteria:**

- At least 18 years of age and legally authorized to work in the U.S.
- Level of artistic professionalism and demonstrated artistic practice.
- Ability to collaborate with a design team.

**Interested artists will submit a statement of approach and provide examples of past work that highlight relevant experience. In their application, DCLA and the Artist Selection Panel will consider:**

- The artist’s deep and meaningful connection to the Chinatown community
- The artist’s previous experience working closely with communities
- The artist’s capability of creating a design that generates a strong sense of belonging and pride within the Chinatown community



## Selection Process Structure

### Selection Panel

In accordance with the Percent for Art Process, a Selection Panel will be formed consisting of:

#### Voting Panelists

- DCLA Commissioner or Designee
- Representative of the Percent for Art Program (DCLA)
- Representative of the Design Agency (NYCEDC)
- Representative of the Sponsor Agency (NYCDOT)
- Representative of the Design Team (Marvel)
- 3 members of the public who are arts professionals and knowledgeable about contemporary art and the community where the project is taking place

#### Advisory Members

- Chinatown Connections Working Group members
- Elected officials
- Community board representatives
- Members from the Public Design Commission
- Program staff from DCLA, NYCEDC, NYCDOT, and NYC Parks
- Members of the public from local organizations and community groups (To participate, send name/email/affiliation to [percentinfo@culture.nyc.gov](mailto:percentinfo@culture.nyc.gov))

### Process Summary

- An open call for artists to express interest will be conducted. DCLA will use the call to develop an artist pool.
- An Artist Selection Panel meeting will be held to review past works of artists under consideration. Voting and Advisory Panelists identify finalists together.
- Each artist finalist will participate in a design charrette (a collaborative design planning activity) with the design team to discuss their creative practice, working process, and artistic approach and brainstorm possibilities for the project. Panelists (including community members) attend the charrettes virtually and may submit questions to be integrated into the conversation.
- At a meeting following the charrettes, the design team, in conversation with the project team and panel members, will decide which artist is best suited to collaborate on this project.



## History

Dedicated April 28, 1962, the Kimlau Memorial Arch designed by Poy G. Lee (1900-1968) was a gift of the Lieutenant B.R. Kimlau Chinese Memorial Post 1291. The post's headquarters are located nearby at 191-193 Canal Street. The monument and post are named after Second Lieutenant Benjamin Ralph Kimlau (1918–1944), a Chinese-American bomber pilot who died while attacking Japanese installations near New Guinea. It is a beloved war memorial commemorating the veteran's service during World War II.

## Memorial Arch Reconstruction

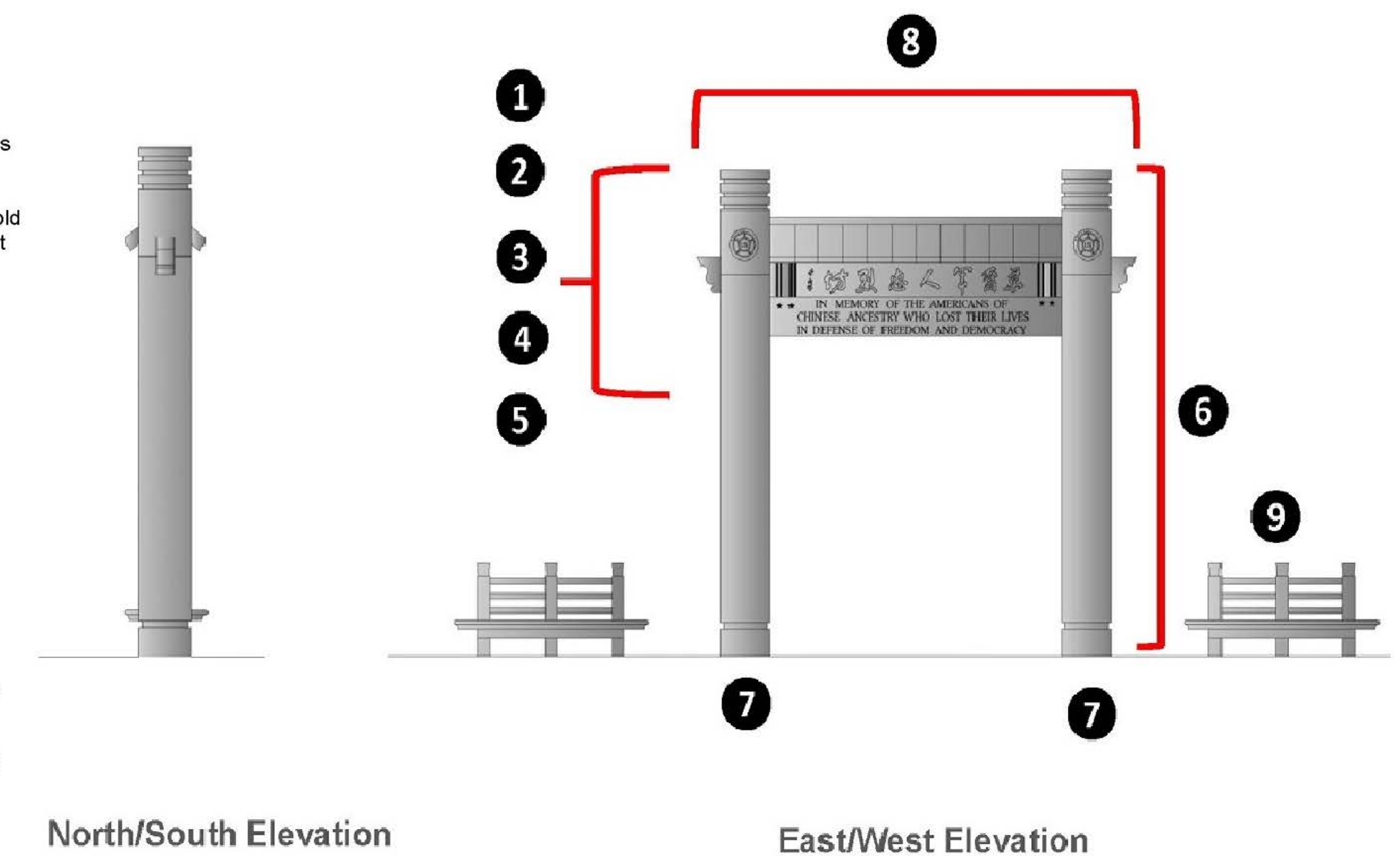
- Parks cares for the Memorial Arch through annual cleanings, which include pressure washing with an anionic detergent and applying biocides when necessary.
- Parks has a capital project to reconstruct Kimlau Memorial Arch, which has large cracks developing in the supportive columns (see proposed work key to the right).
- Parks conducted an engineering safety inspection of the Memorial Arch and suggested the following measures:
  - Placing barricades around the Arch
  - Crack Monitoring
  - Steel Bracing Installation
  - Developing a design for reconstruction
- The project is currently in procurement, which is anticipated to be complete this summer. Once procurement is complete, construction can begin. The construction is expected to take 1 year.

# Kimlau Memorial Arch

### Proposed Work Key

Work shown is typical for all elevations

1. Disassemble arch lintel/column connections and lintel roof stones.
2. Remove cracked portions of granite and hold for re-use or for modeling new replacement units
3. New and/or refurbished structural steel assembly and connections
4. New matching granite components or reinstall salvaged building fabric wherever possible
5. Rout and replace failed mortar joints
6. Chemically clean/wash entire structure
7. Footing/foundation stabilization as required
8. Install new bird deterrent apparatus along roof ridge, column tops and projecting side brackets.
9. Restore and chemically clean existing cast concrete benches

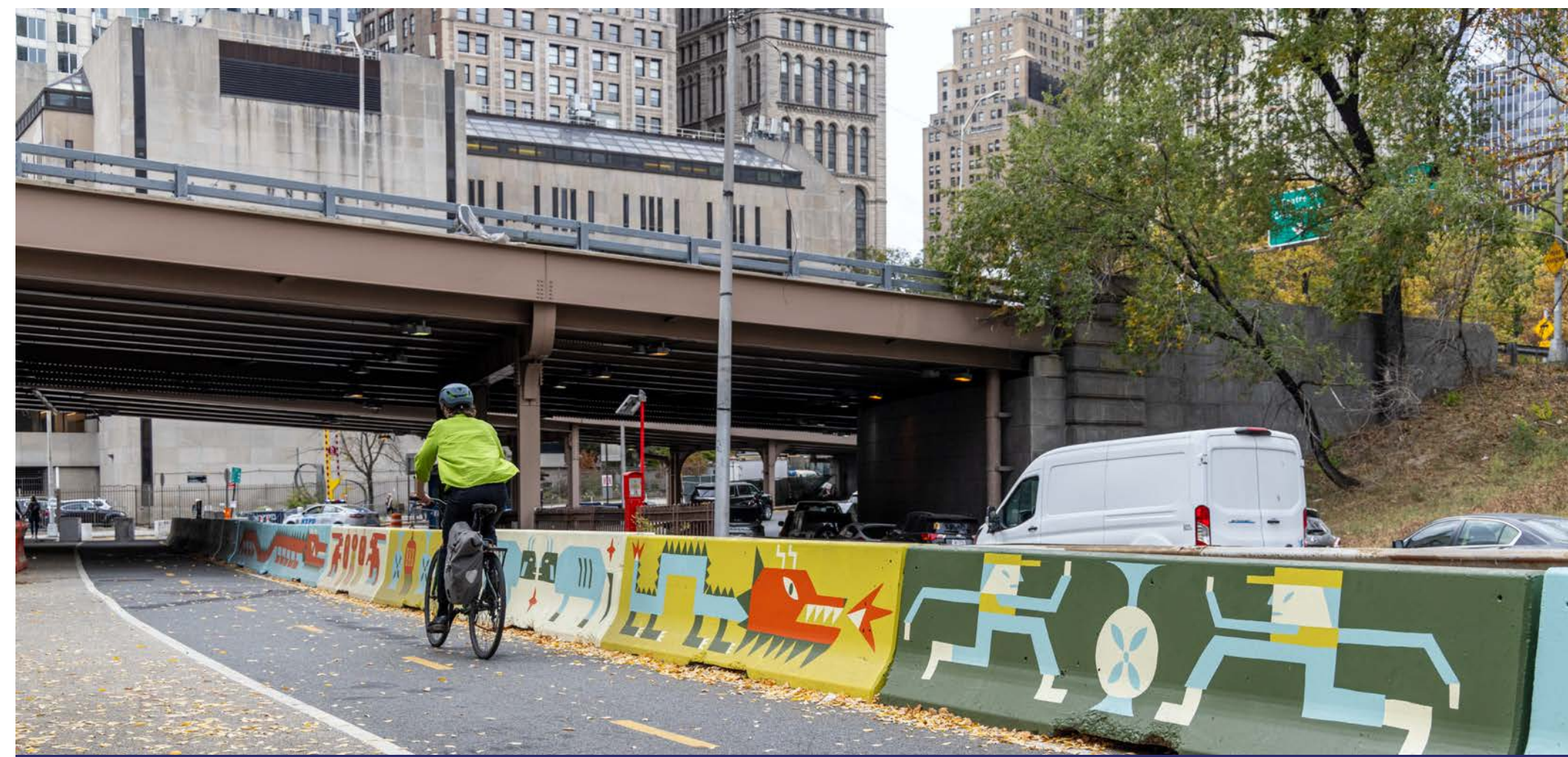


Kimlau Memorial Arch Reconstruction  
Kimlau Square | Borough of Manhattan

0' 2' 4'



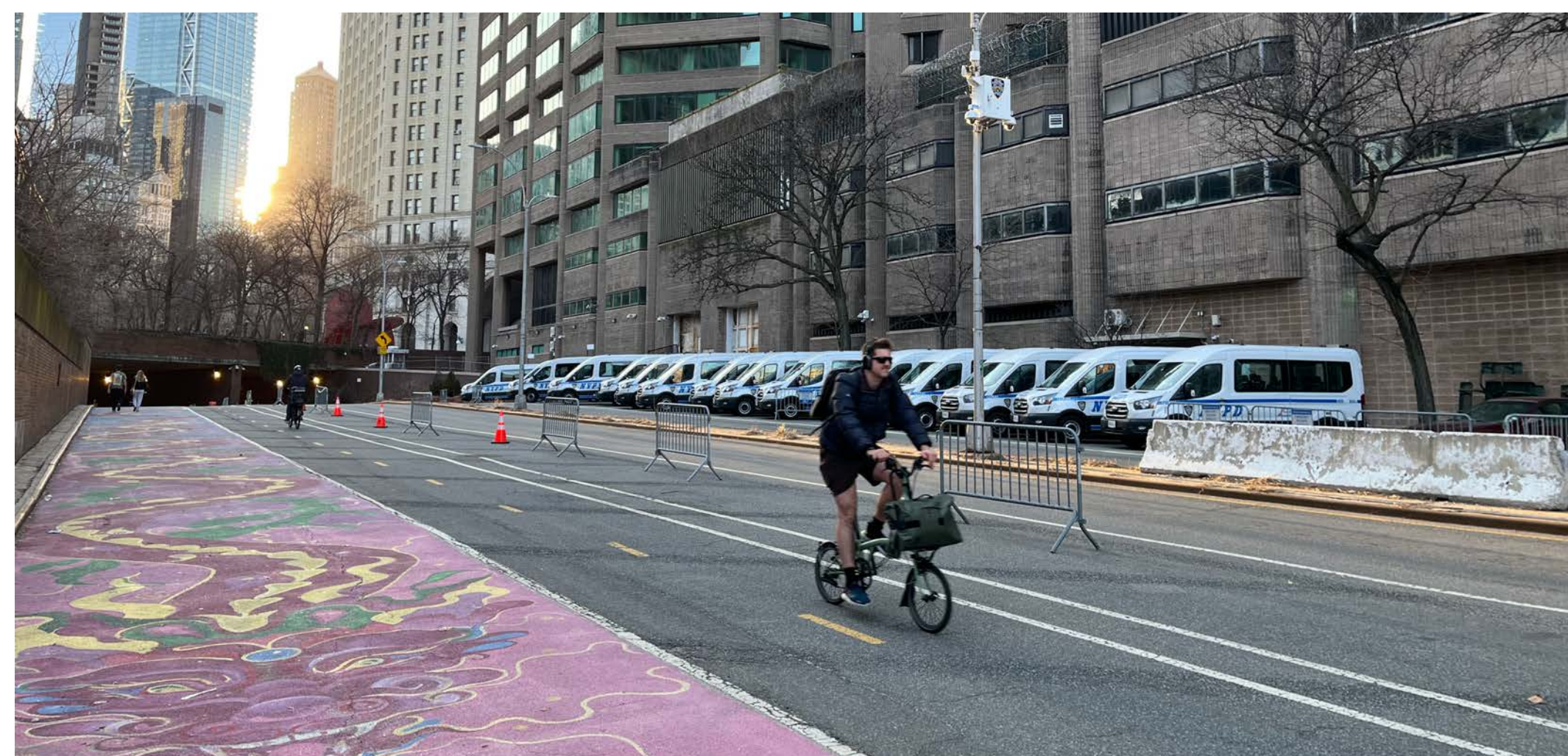




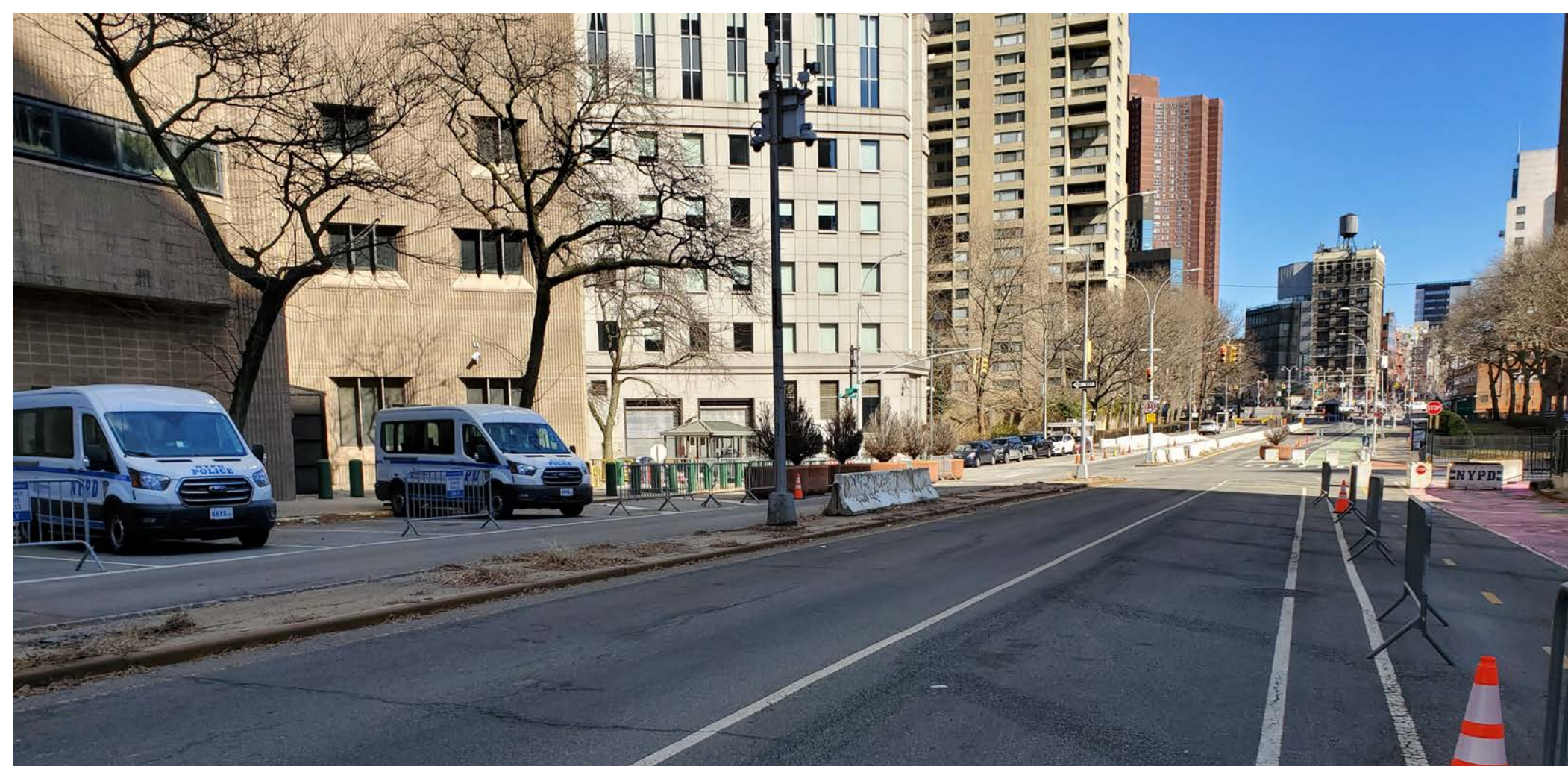
New Art along Jersey Barriers



New Sidewalk



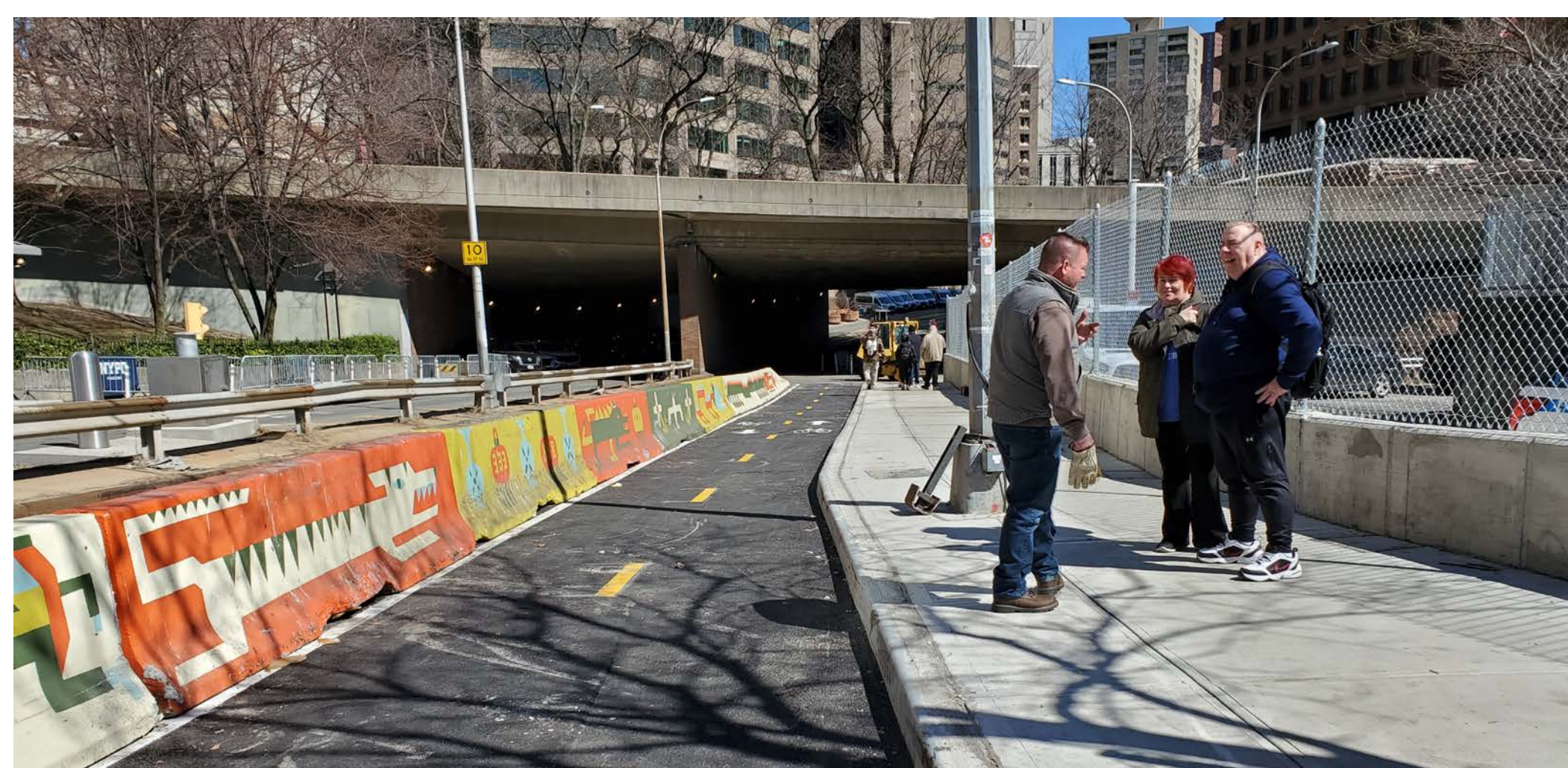
Expanded Space on East Side of Park Row



Expanded Space on East Side of Park Row



Art-Filled Curb Extensions



Pinch Point Upgrades

## NYC DOT Street Improvement Projects

- Extension of the two-way bike lane from Pearl St to Worth St on Park Row
- Art-filled curb extensions at St. James Pl and Madison St
- Art-filled curb extensions at Pearl St and St. James Pl
- Concrete curb extensions at Ave of the Finest and Pearl St
- New art along the jersey barriers on Park Row and in the Brooklyn Bridge stairwell
- Enhance accessibility, create a new sidewalk along Park Row where bikes and pedestrians previously had to share space
- New art in painted pedestrian space on Park Row between Ave of the Finest and Pearl St
- Bus Boarding Island at Worth St and Park Row

## Additional Street Improvements in Coordination with NYPD

- Removed NYPD parking on northbound Park Row (east side)
- Removed guiderail on the median between Pearl St and One Police Plaza Bridge
- Relocating jersey barriers and planters along Park Row later this month
- Rebuilding of the median tip in the crosswalk at Pearl St on Park Row later this spring





Asphalt Mural



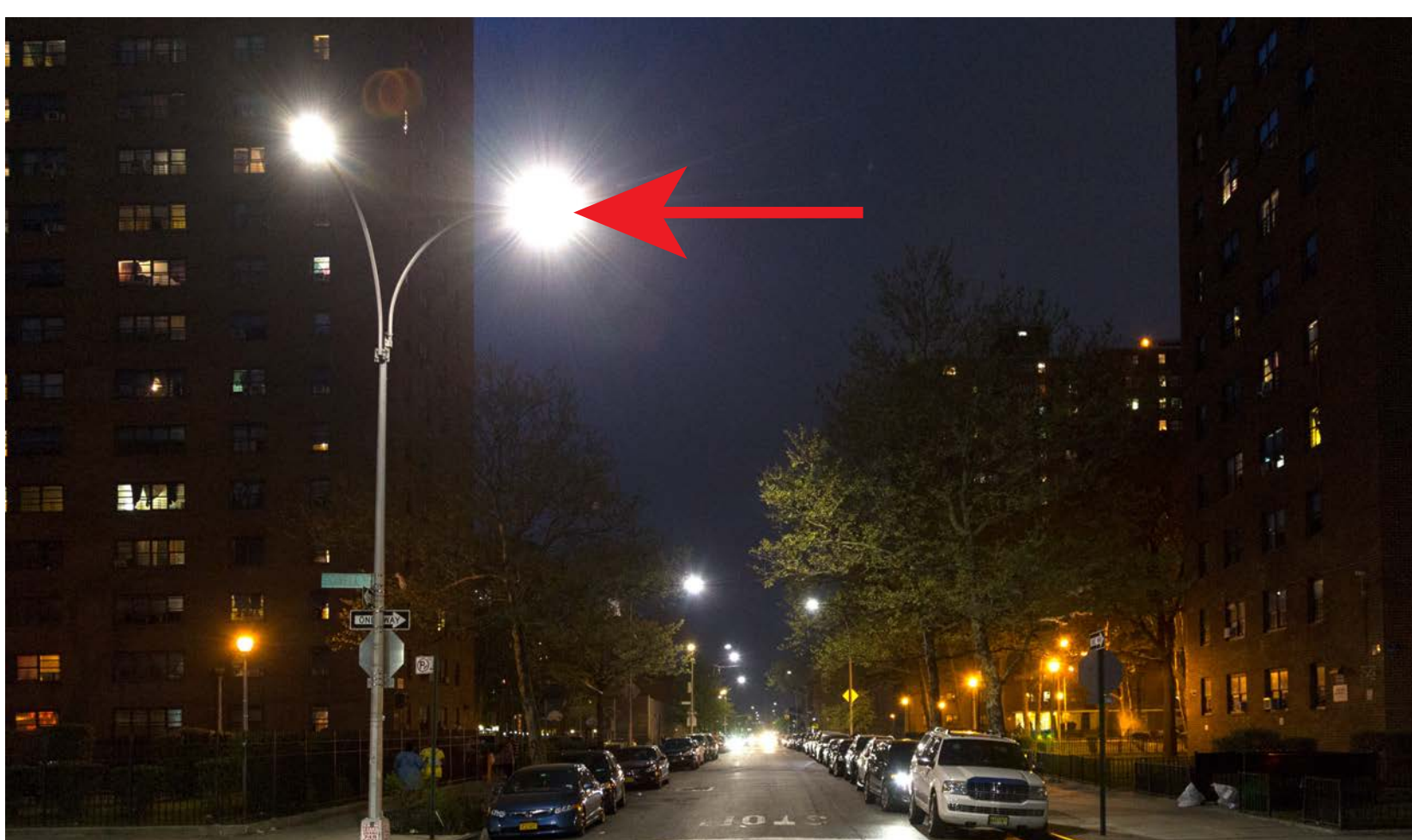
Benches



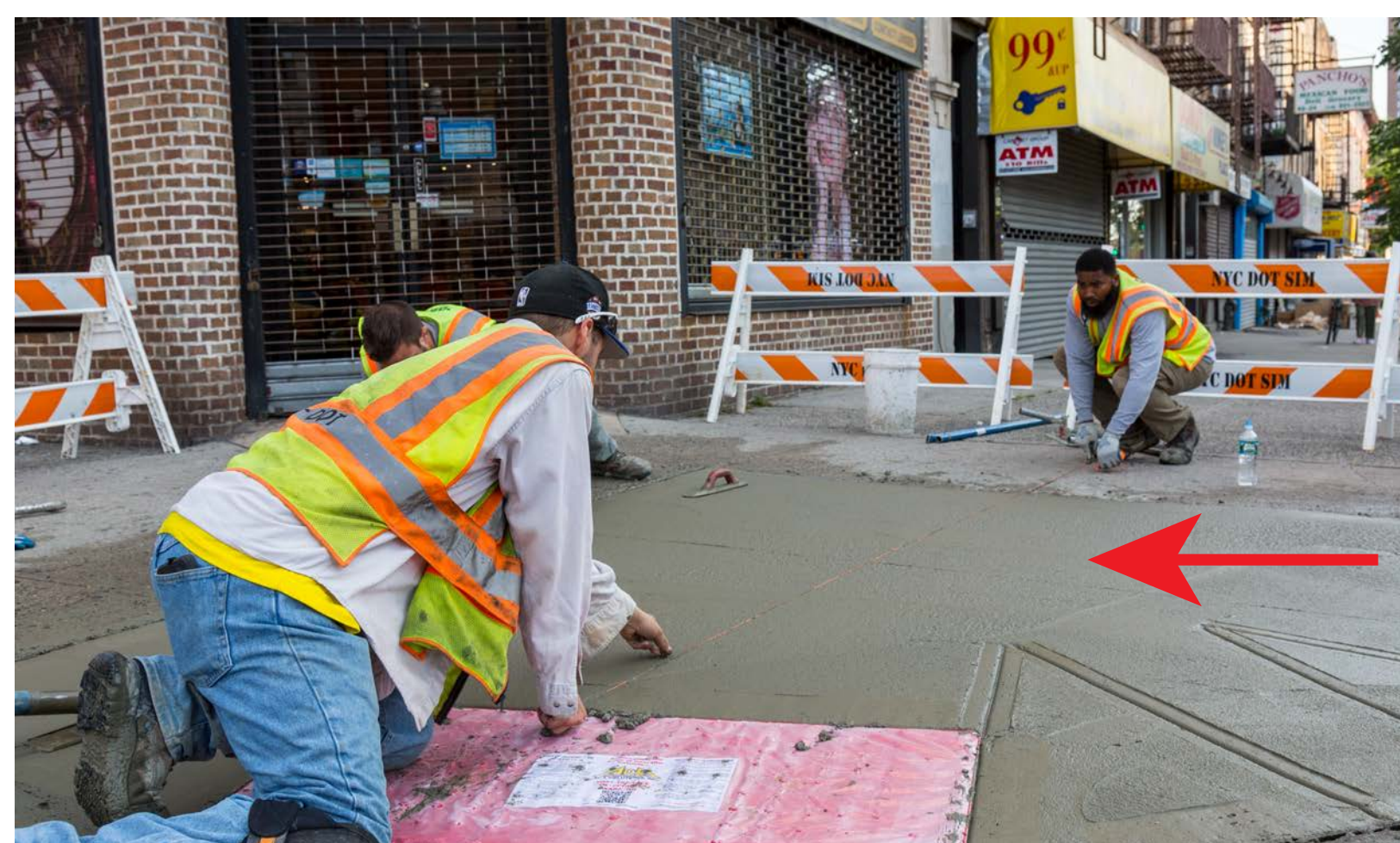
Bike Racks



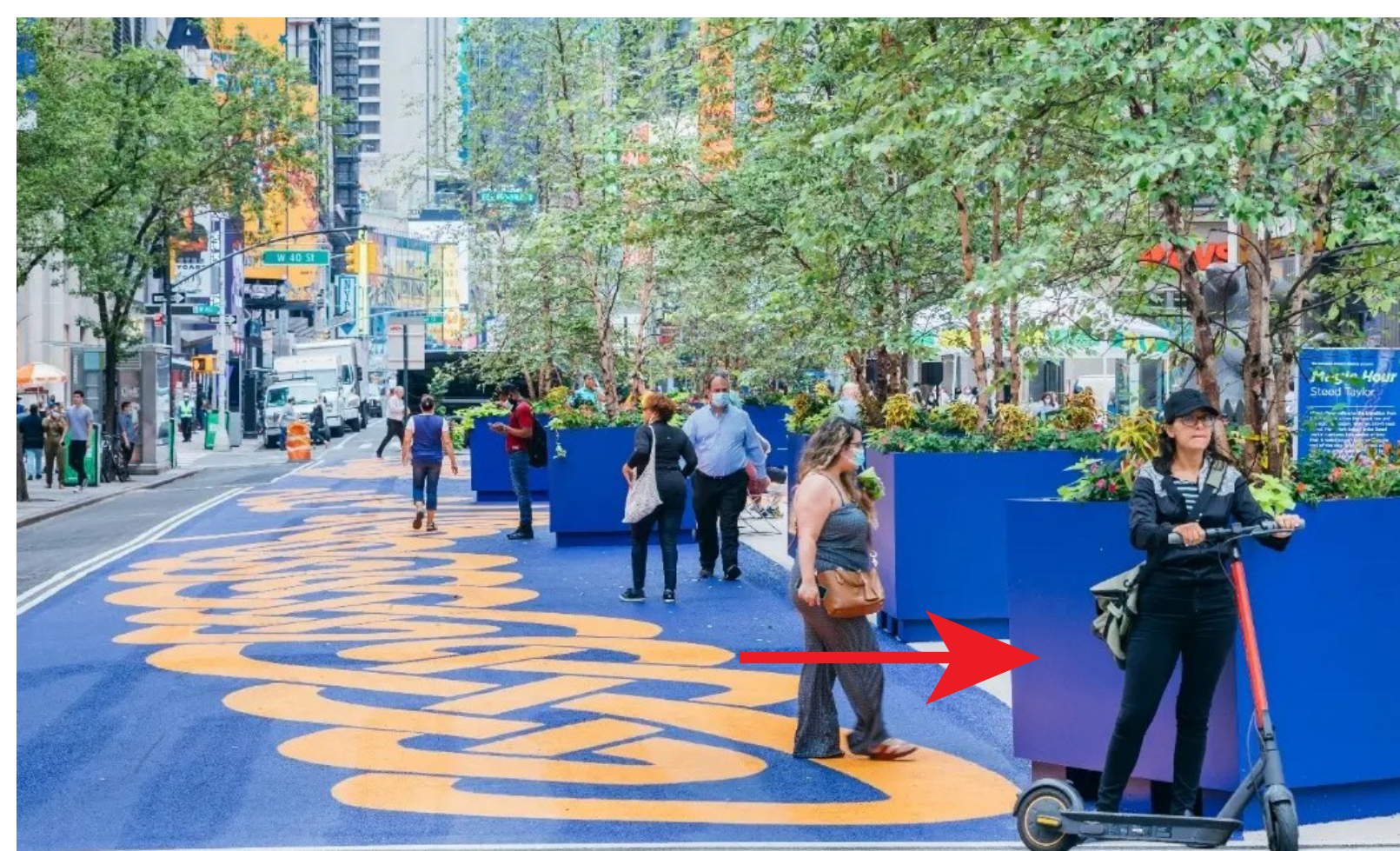
Curb Extensions



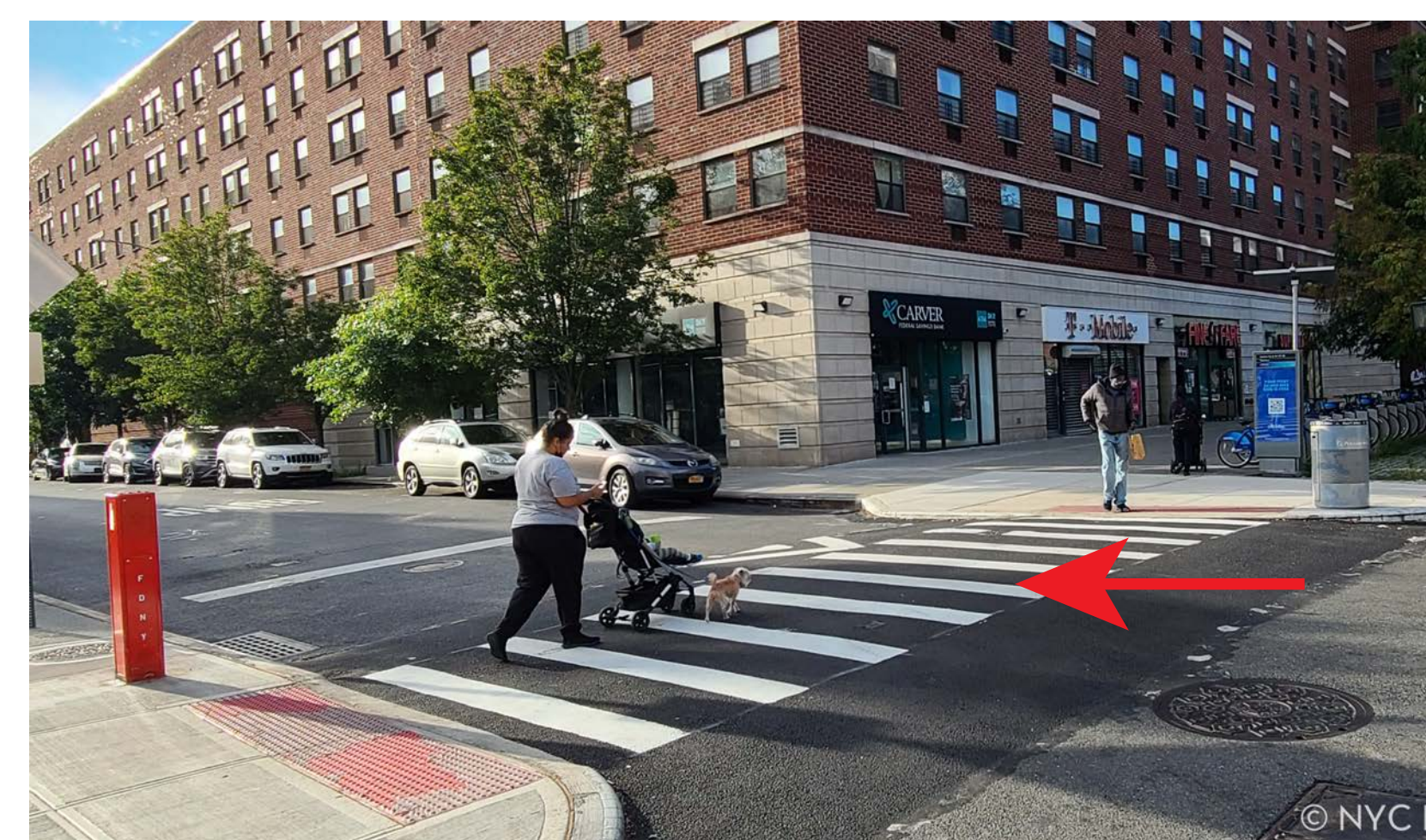
Lighting



Pedestrian Ramps



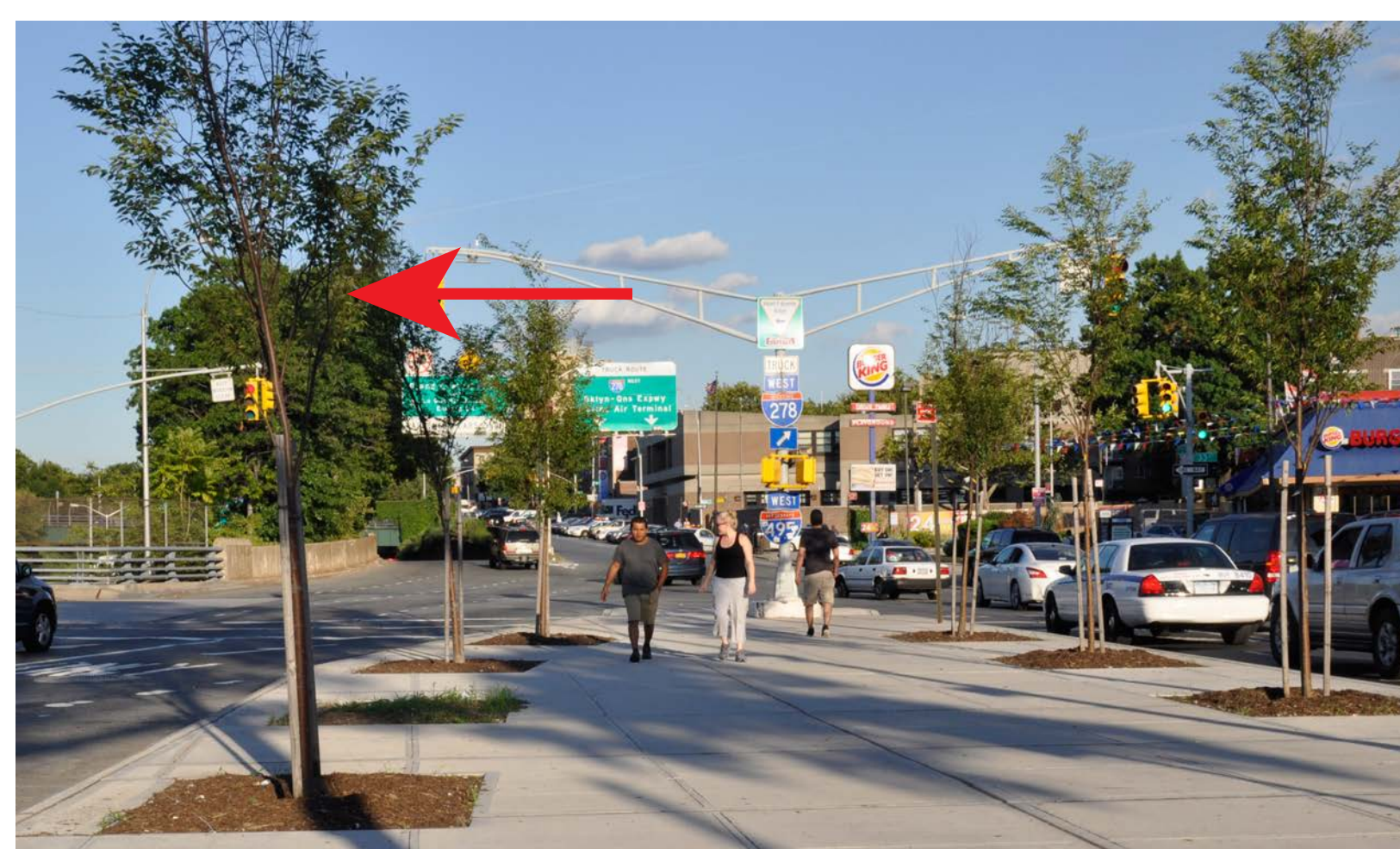
Planters



Raised Crosswalk



Street Furniture



Trees



Wayfinding

Share your thoughts!



## Scenarios Being Studied

- Only Kimlau Square Reorganization
- Only Park Row Reopening
- Both Kimlau Square Reorganization and Park Row Reopening

## Analyses

- Vehicular, Bicyclists, and Pedestrian Counts
- Travel time/travel speeds
- Parking and loading operations
- Changes in travel patterns in Park Row reopening scenarios
- Changes in conflict points between modes of travel (Pedestrian/Cyclists/Motorists)

## Timeline

Scope of Work	Completed Spring 2024
Data Collection	Completed May 2024
Existing Conditions Analysis	Completed September 2024
Park Row Reopening vehicular demand analysis	Completed January 2025
Proposed Conditions Analysis (Park Row / Kimlau Square)	Expected March 2025
Interim Results of Full Study	Expected April 2025
Final Technical Report	Expected May 2025



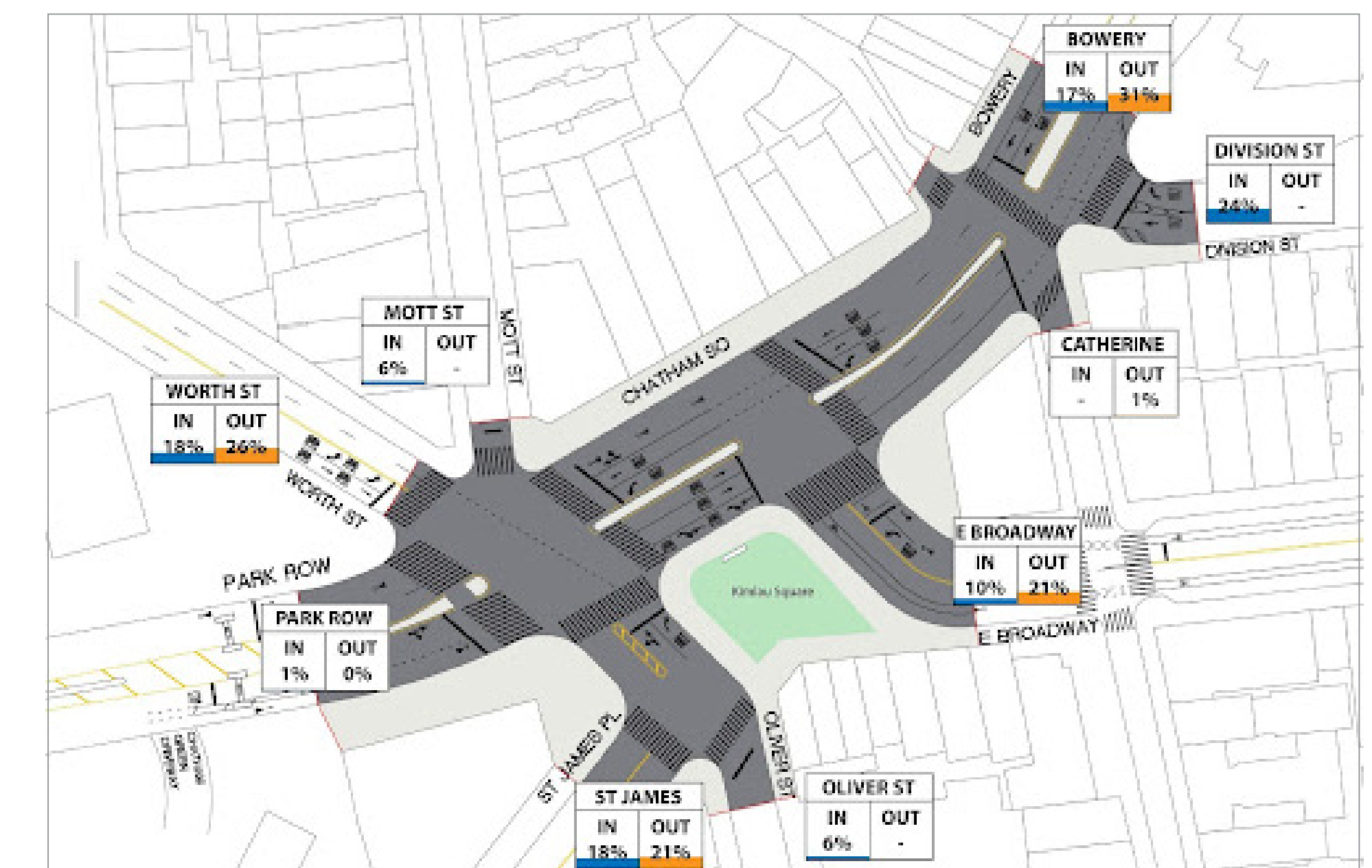
Pedestrian Volumes



Bike Volumes



Major Flow



Origin-Destination