

107th STREET PIER and BOBBY WAGNER WALK - PUBLIC ARTWORK

Community Board 11 Meeting
March 06, 2025



Next Steps

- Public Design Commission approval: Spring 2025
- Final Design completion: Summer 2025
- Construction start: Winter 2026



Water Table

Jerome W. Haferd

E. 107th Bobby Wagner Walk
Permanent Public Artwork

MARCH 6, 2025
COMMUNITY BOARD 11 PRESENTATION



PROJECT DESCRIPTION : WATER TABLE

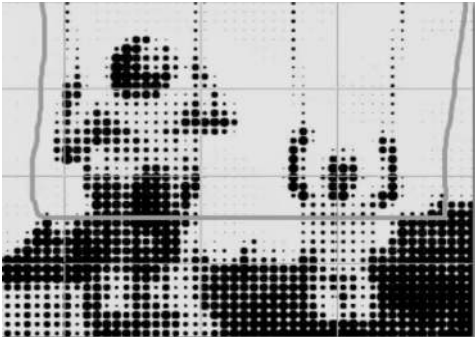
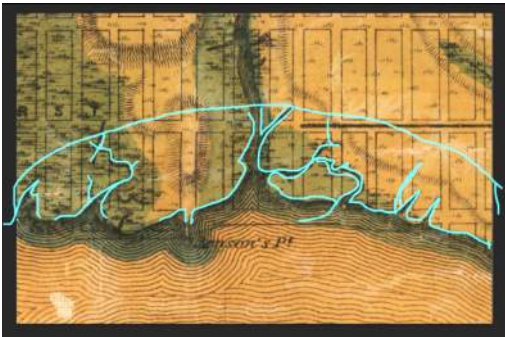


Water Table celebrates the water’s edge as a place of **gathering, celebration, and repair**. This permanent artwork will image the archaeology and everyday water stories of El Barrio / East Harlem, while re-surfacing an archaeological trace of the original Harlem Creek which once flowed into the East River at this location, and now lies buried.

The Water Table evokes weaving and water in ancient and futuristic ways. The piece is a work of landscape art, a community engagement concept, and public infrastructure. Water Table will inscribe and activate a crescent-shaped plaza that will embrace the entire esplanade for gathering and everyday ritual at the water’s edge.

The artwork consists of three major elements : The groundwork of precast “strands”, the precast “altar” which the strands flow across, and the crescent shaped screen made of CNC-cut steel elements.

The Water Table’s steel and precast concrete design **weaves our collective histories into a gathering space** and collective statement that resonates not only our human, indigenous relationship to the Water, but also celebrates the diasporas and peoples that gather and have gathered at this specific site and continue to do so today. The Water Table also is an act of joy, abundance, and community, and will serve as a playful and vibrant representation of the revitalization of this Waterfront, displaying “etched” contributions by numerous cultural and community actors from East Harlem.



107th Street / BWW Site Plan showing artwork location



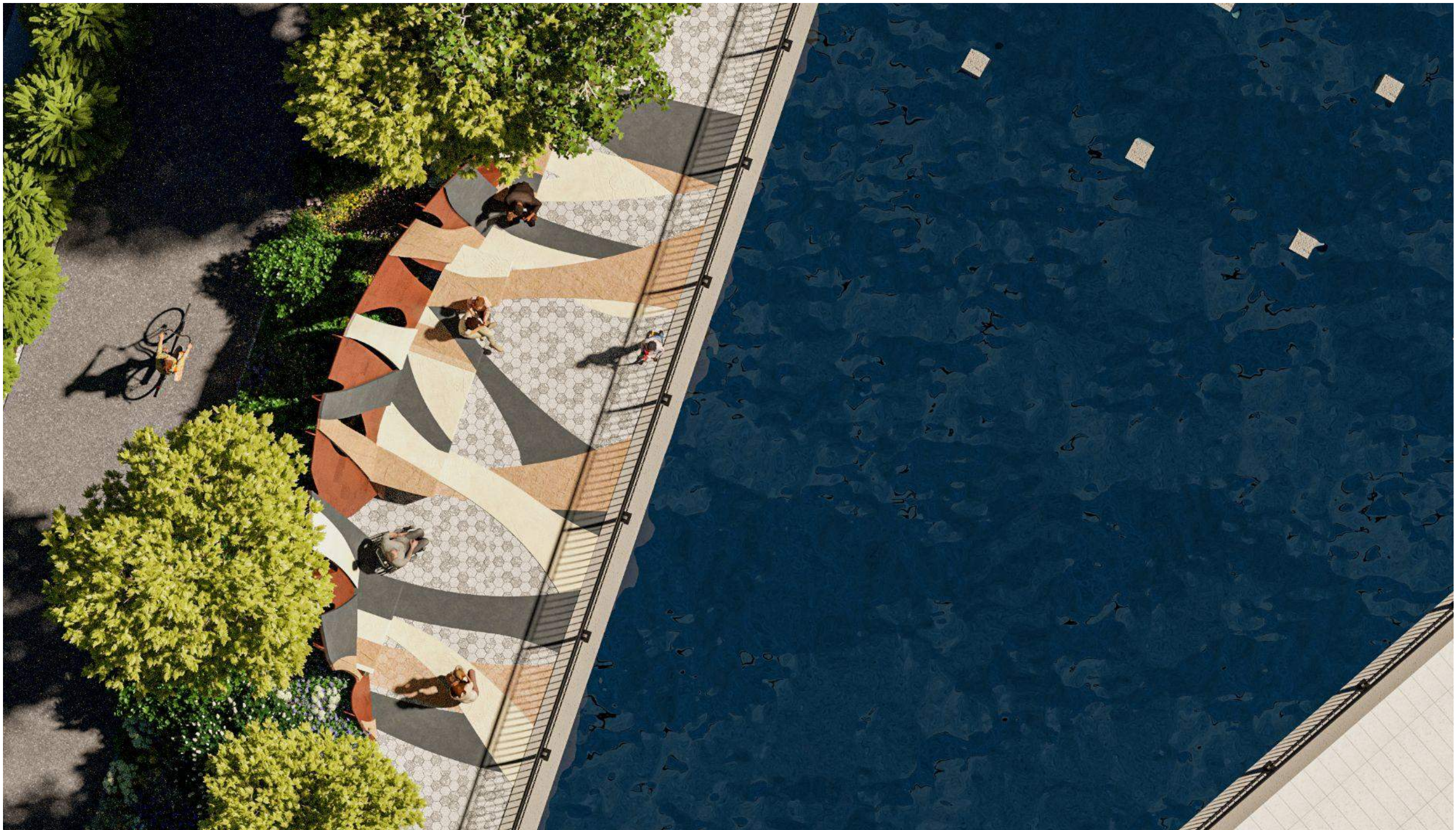


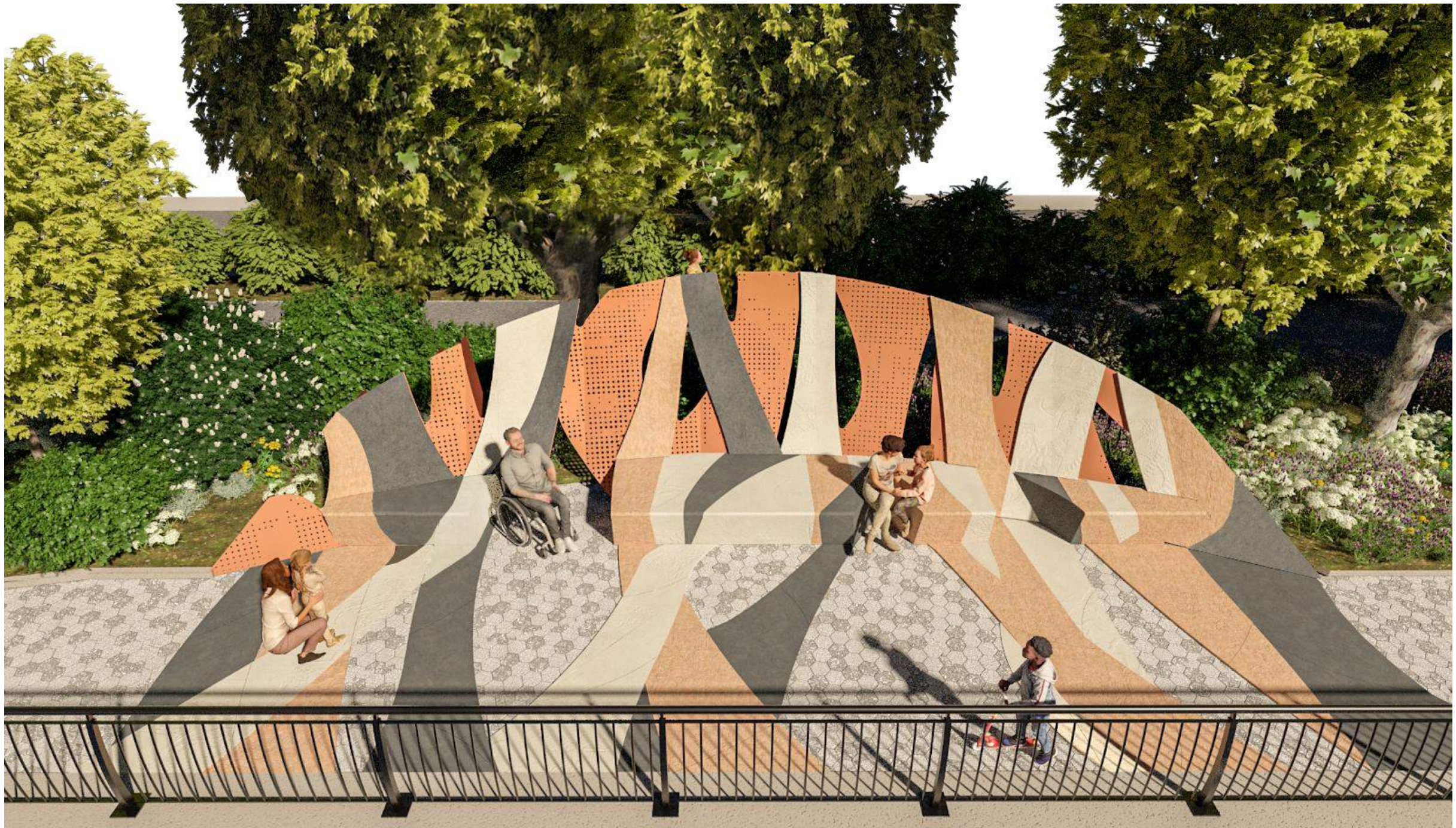
**Custom precast
GFRC panel 1.5" thick**

**.5" steel panels and
steel support fins w/
Tenemec paint
with .5" steel baseplate**

**"Altar"
Custom GFRC precast
Panel facing (~3" thick) with
Internal steel plate support**

**Custom Precast GFRC
Concrete Inlay pavers
(max dim ~3'-0", max
deviation +/- 1/4")**









NAME: East River

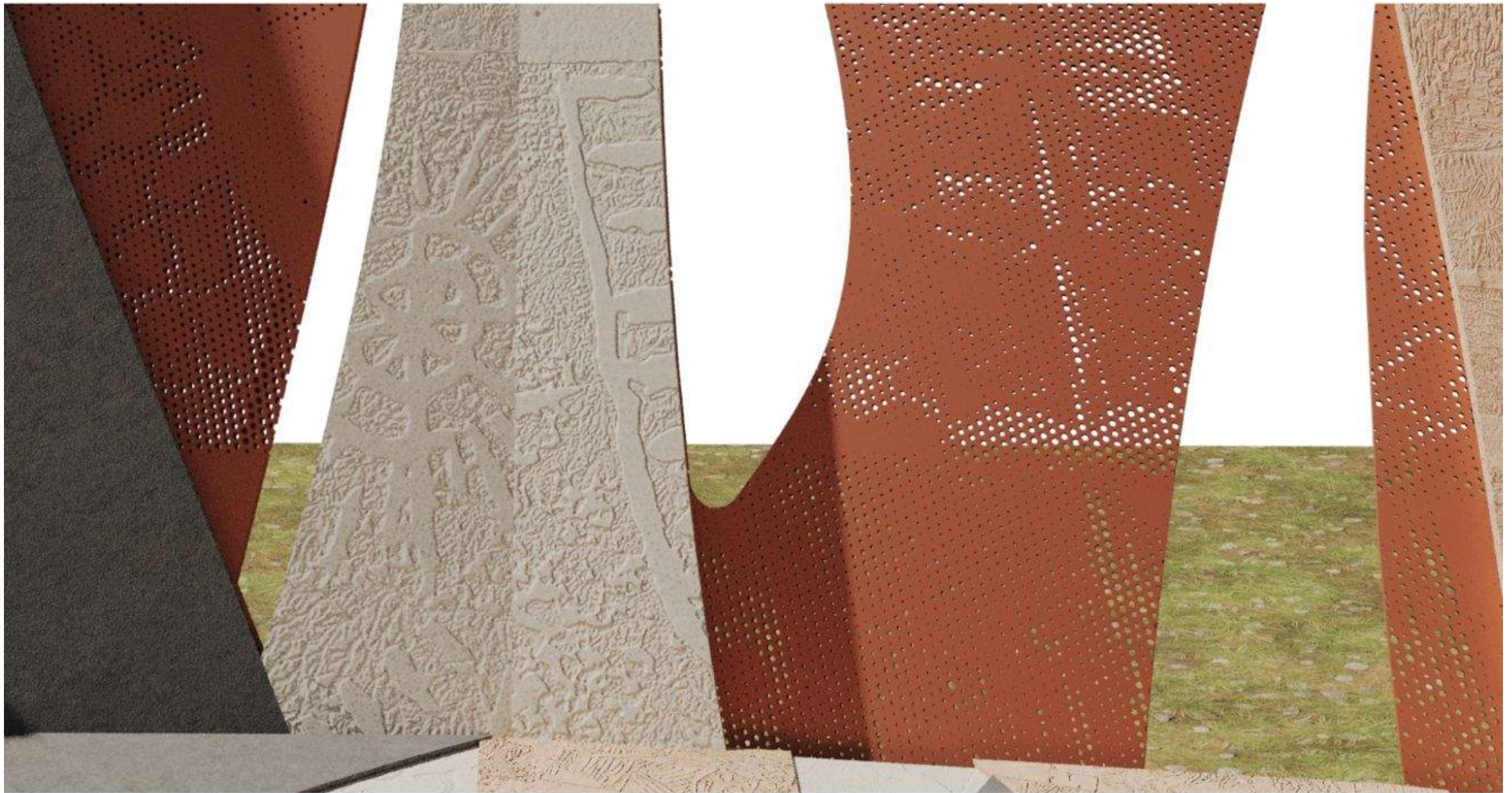
PROJECT: Water Table / 107th BWB Esplanade

JEROME HAFERD STUDIO

TITLE: Etchings

SCALE: NTS

DATE: 03/06/2025



NAME: East River

PROJECT: Water Table / 107th BWV Esplanade

JEROME HAFERD STUDIO

TITLE: Etchings

SCALE: NTS

DATE: 03/06/2025

Etchings - Community Source Material





Water Table

Jerome W. Haferd

E. 107th Bobby Wagner Walk
Permanent Public Artwork

MARCH 6, 2025
COMMUNITY BOARD 11 PRESENTATION