

# **Public Workshop #2**

## **Interventions Activity**

# **Boards**

## Shore Power

Provides ships with land-based electricity while they are docked at a port instead of using diesel engines, which can significantly reduce emissions from the vessel while berthed. Shore Power has been identified as a clear priority for the community and the city, and will be considered for all scenarios of the master plan.



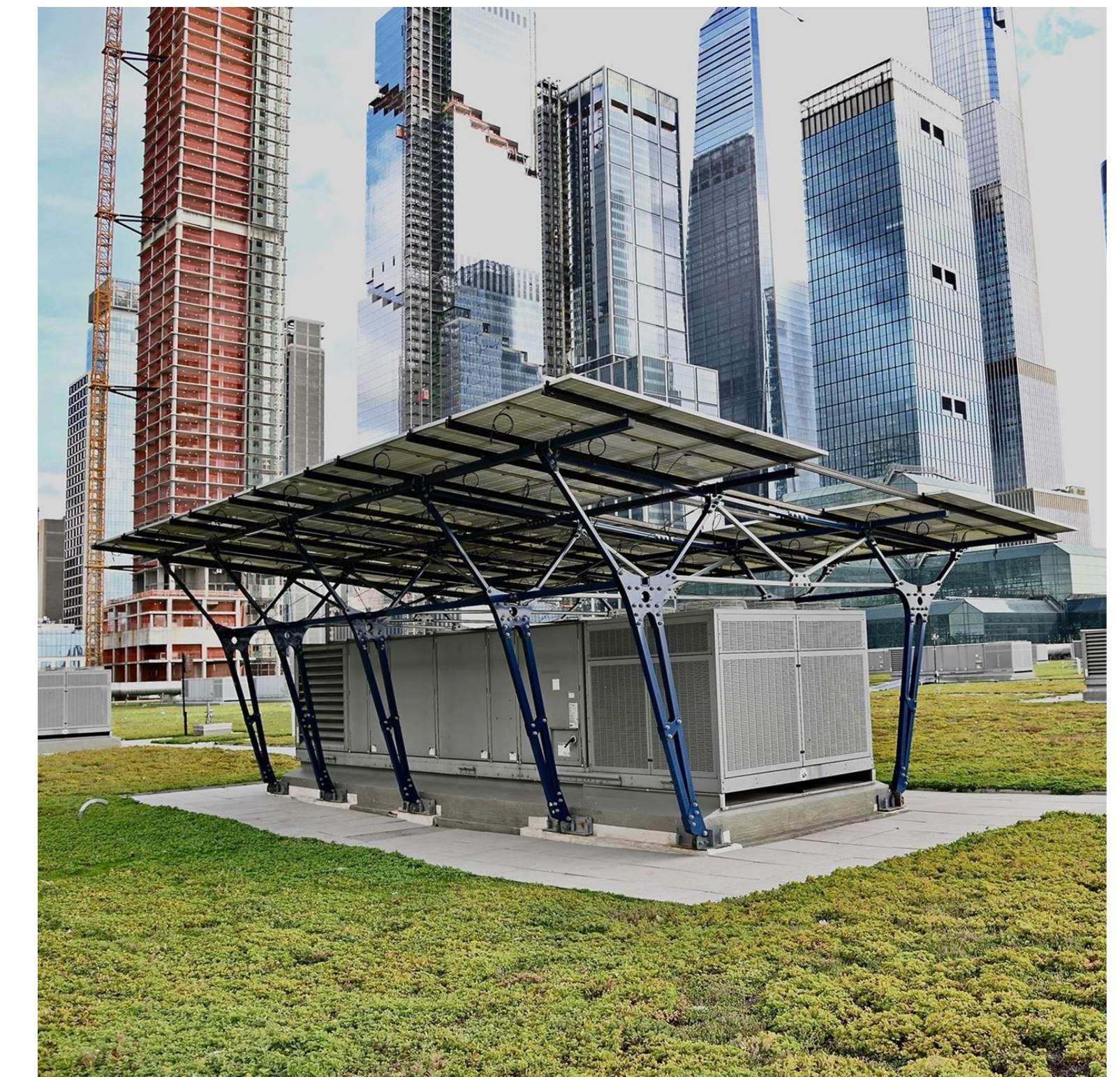
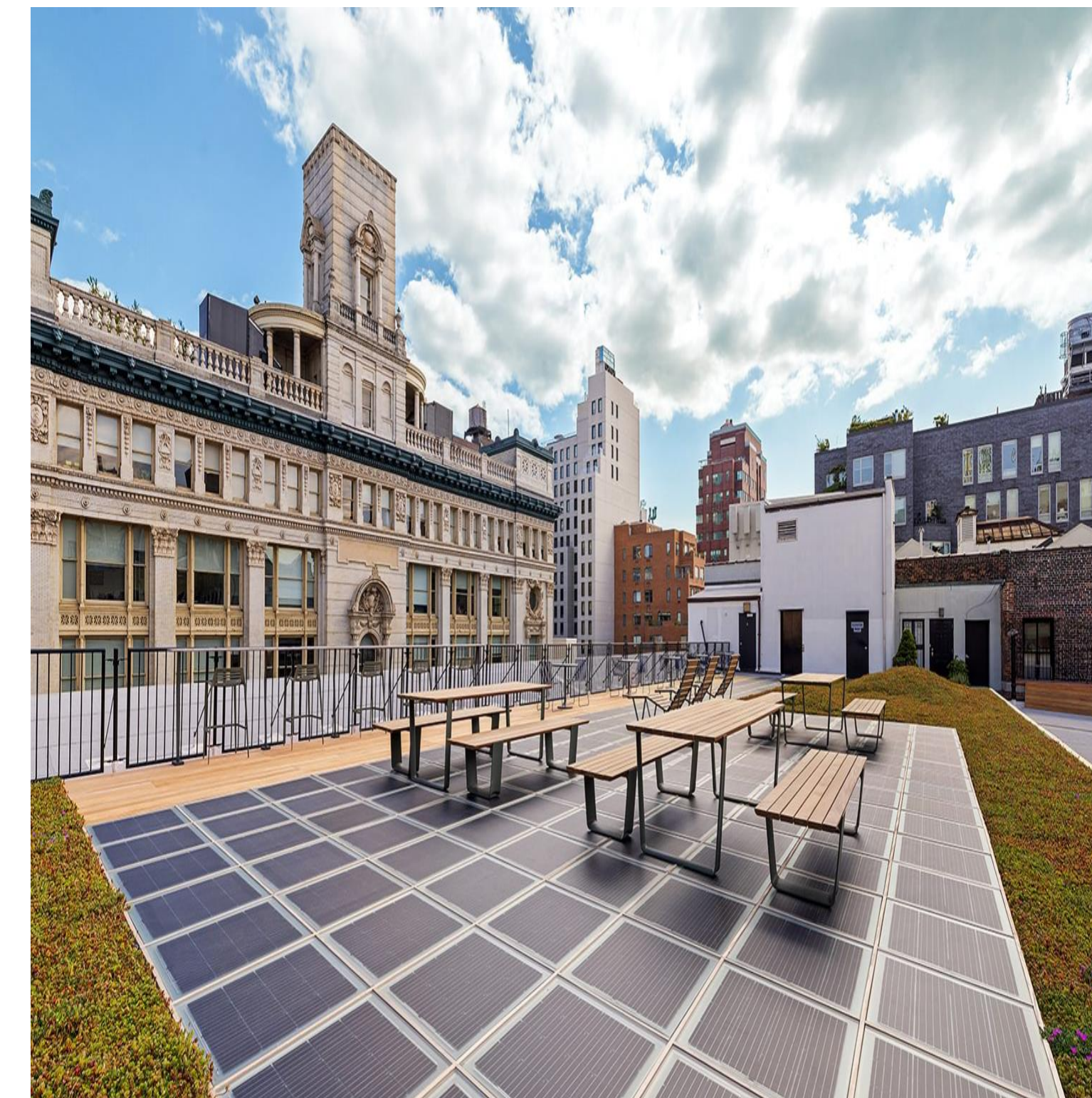
Estimated Level of Complexity

**High**

Add your thoughts here!

## 1 Solar Power

Provides energy to power MCT buildings, offsetting energy costs in shared spaces while complying with energy codes. Potential locations may include rooftops of MCT piers.



Estimated Level of Complexity

**Medium**

How would you **score** this intervention?

1  
LOW

2

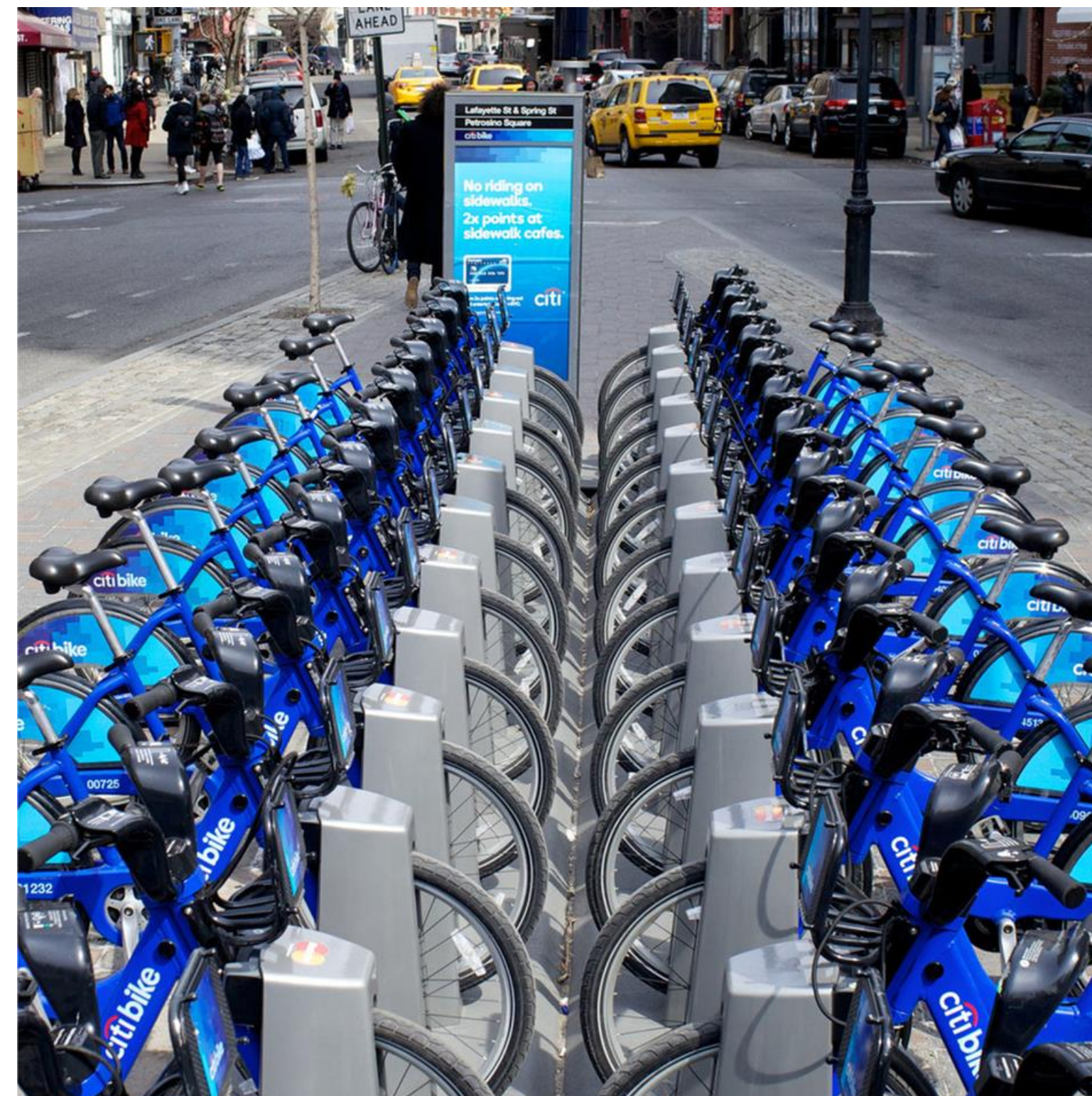
3

4

5  
HIGH

## 2 Citi Bike Stations

Provides alternative, green transportation. Potential locations may include sidewalks and plazas between West 46th and 54th Streets.



How would you **score** this intervention?

Estimated Level of Complexity

**Low**

1  
LOW

2

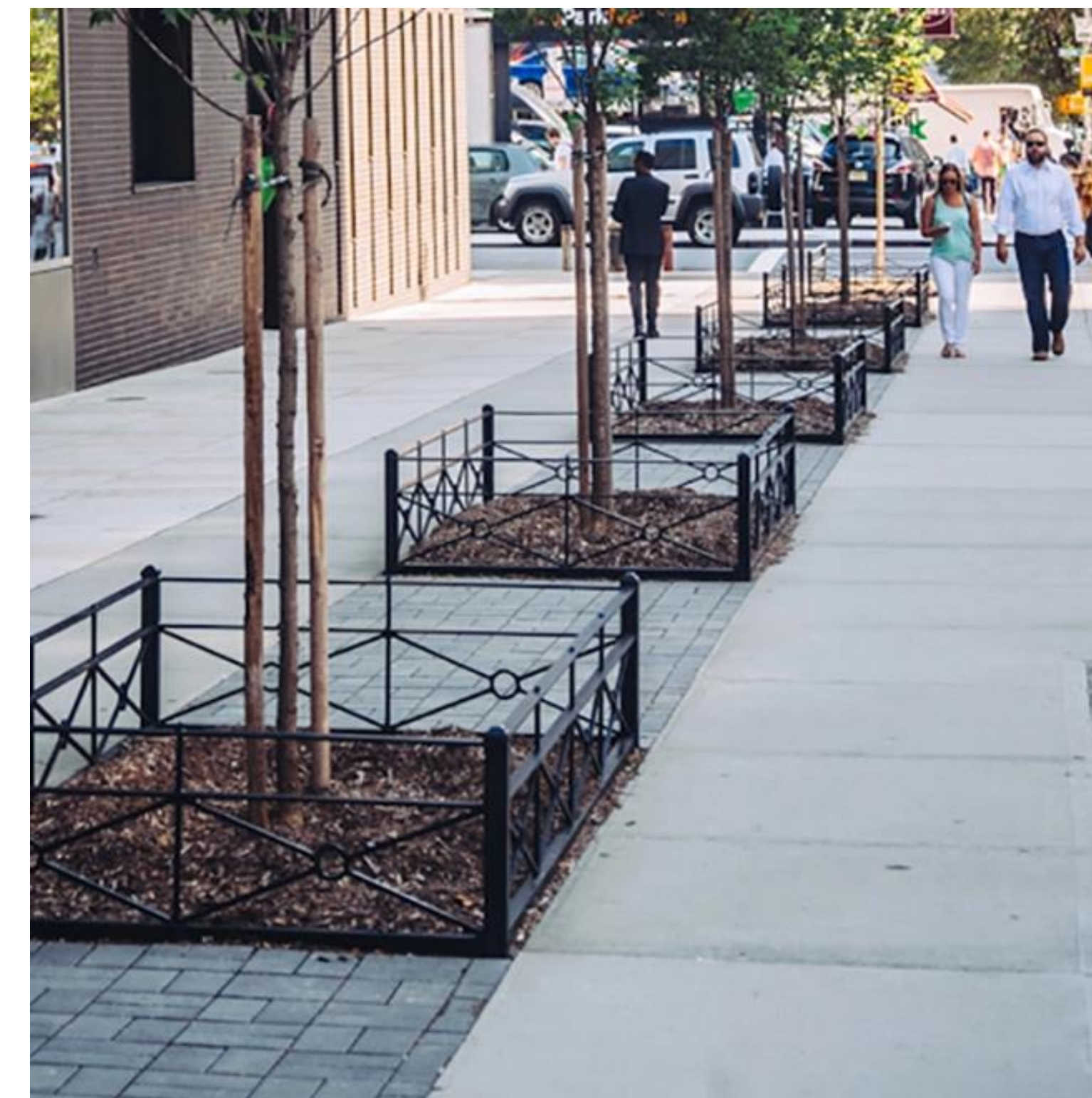
3

4

5  
HIGH

## 3 Blue Infrastructure

Provides stormwater management that mitigates flooding while enhancing the aesthetic value of public spaces. Potential locations may include sidewalks and plazas between West 46th and 54th Streets.



How would you **score** this intervention?

Estimated Level of Complexity

**Low**

1  
LOW

2

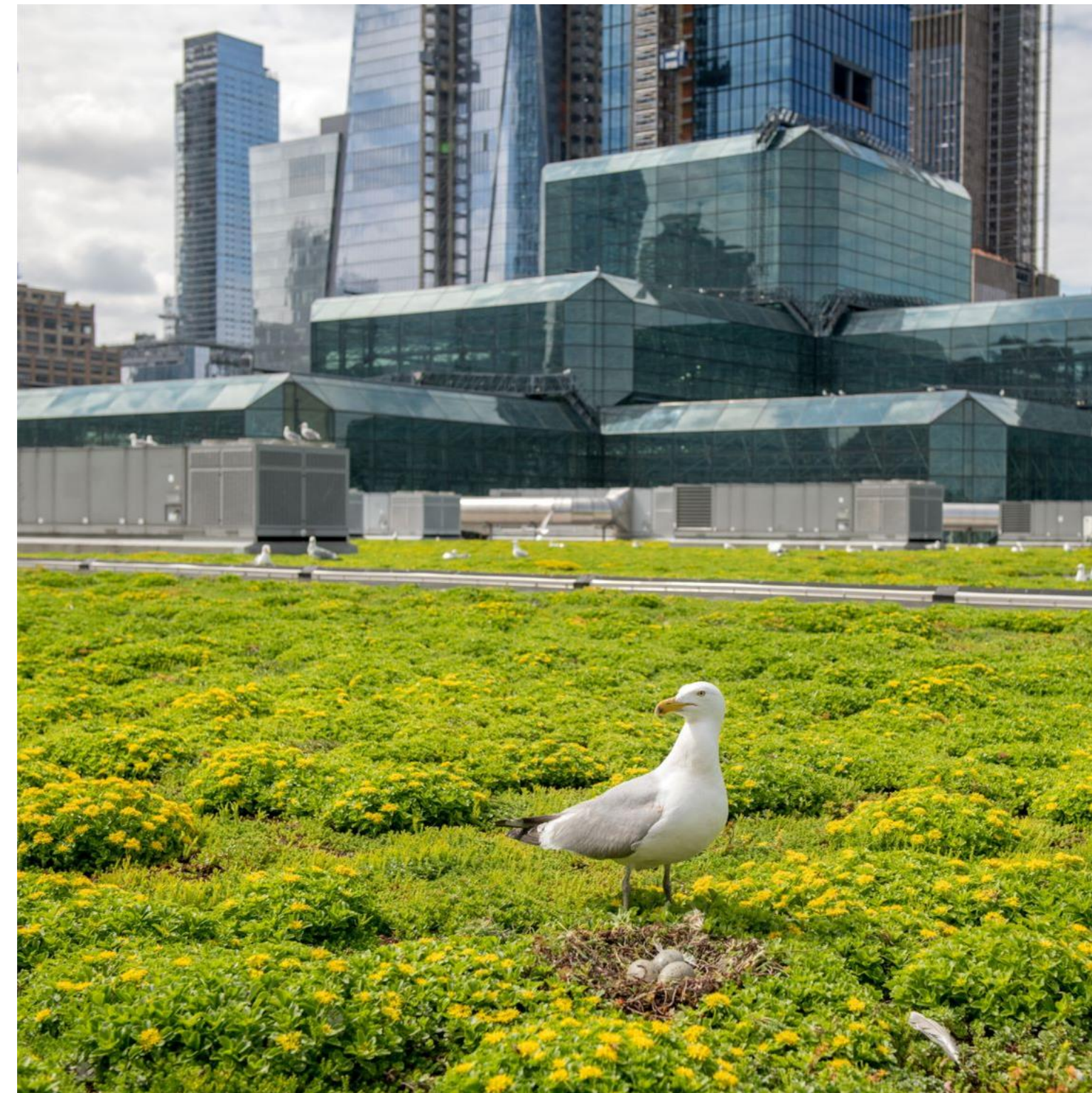
3

4

5  
HIGH

## 4 Green Roofs

Provides environmental benefits such as improved insulation, reduced stormwater runoff, and enhanced biodiversity, while also creating aesthetically pleasing green spaces in urban areas. Potential locations may include rooftops of MCT piers.



How would you score this intervention?

Estimated Level of Complexity

Medium

1  
LOW

2

3

4

5  
HIGH

## 5 Blue Highways

Lessens traffic and pollution on roads by moving freight by water-based barges instead of road-based transport. Potential locations may include MCT piers.



How would you score this intervention?

Estimated Level of Complexity

High

1  
LOW

2

3

4

5  
HIGH

Are there any **sustainability** interventions you would like to be implemented that you didn't see tonight?

Add your thoughts here!

In your opinion, what is the most important factor when choosing one **sustainability** intervention over another?

Add your thoughts here!

Do you have any other questions, concerns, or ideas regarding **sustainability** at Manhattan Cruise Terminal?

Add your thoughts here!

# Traffic & Congestion

## 1 Widened Sidewalks

Provide more space for pedestrians, enhancing safety and encouraging foot traffic in the area. Potential locations may include sidewalks and plazas between West 46th and 54th Streets on the west side of 12th Avenue.



How would you score this intervention?

Estimated Level of Complexity

Medium

1  
LOW

2

3

4

5  
HIGH

## 2 Pedestrian & Cyclist Traffic Lights

Ensures safe, visible, shared use of the path, guiding both groups with designated routes and rules. Requires coordination with other agencies. Potential locations may include sidewalks, bike lanes, and mixed traffic crossings between West 46th and 54th Streets.



How would you score this intervention?

Estimated Level of Complexity

Medium

1  
LOW

2

3

4

5  
HIGH

# Traffic & Congestion

## 3 Mid-Block Crosswalks

Improve pedestrian safety and convenience by providing additional crossing points, reducing the need for long detours to reach intersections. Potential locations may include sidewalks, bike lanes, and mixed traffic crossings between West 46th and 54th Streets.



How would you score this intervention?

Estimated Level of Complexity

Medium

1  
LOW

2

3

4

5  
HIGH

## 4 Wayfinding Signage

Help pedestrians and visitors easily navigate urban areas, providing clear guidance to key landmarks, neighborhoods, and transportation hubs. Potential locations may include sidewalks and plazas between West 46th and 54th Streets.



How would you score this intervention?

Estimated Level of Complexity

Low

1  
LOW

2

3

4

5  
HIGH

# Traffic & Congestion

## 5 Pedestrian Overpass

Allows safe and convenient crossing over busy roads or highways, reducing pedestrian exposure to traffic and improving overall mobility. Potential overpass may connect Pier 90 entrance to West 50th Street.



How would you score this intervention?

Estimated Level of Complexity

High

1  
LOW

2

3

4

5  
HIGH

## 6 Shuttle Bus

Shuttle tourists from the terminal to major transit hubs of convenient midtown locations. Potential route may connect MCT piers to major transit and commercial hubs, such as Columbus Circle, Lincoln Center, 42nd St-Port Authority, and Times Square.



How would you score this intervention?

Estimated Level of Complexity

Low

1  
LOW

2

3

4

5  
HIGH



# Traffic & Congestion

Are there any **traffic & congestion** interventions you would like to be implemented that you didn't see tonight?

Add your thoughts here!

In your opinion, what is the most important factor when choosing one **traffic & congestion** intervention over another?

Add your thoughts here!

Do you have any other questions, concerns, or ideas regarding **traffic & congestion** at Manhattan Cruise Terminal?

Add your thoughts here!

## 1 Entertainment Plaza

Provides opportunity to engage in recreational and cultural activities and connect with community through events, such as live performances, festivals, dancing, and exercise programs. Potential locations may include sidewalks and plazas between West 46th and 54th Streets on the west side of 12th Avenue.



How would you **score** this intervention?

Estimated Level of Complexity

**Medium**

1  
LOW

2

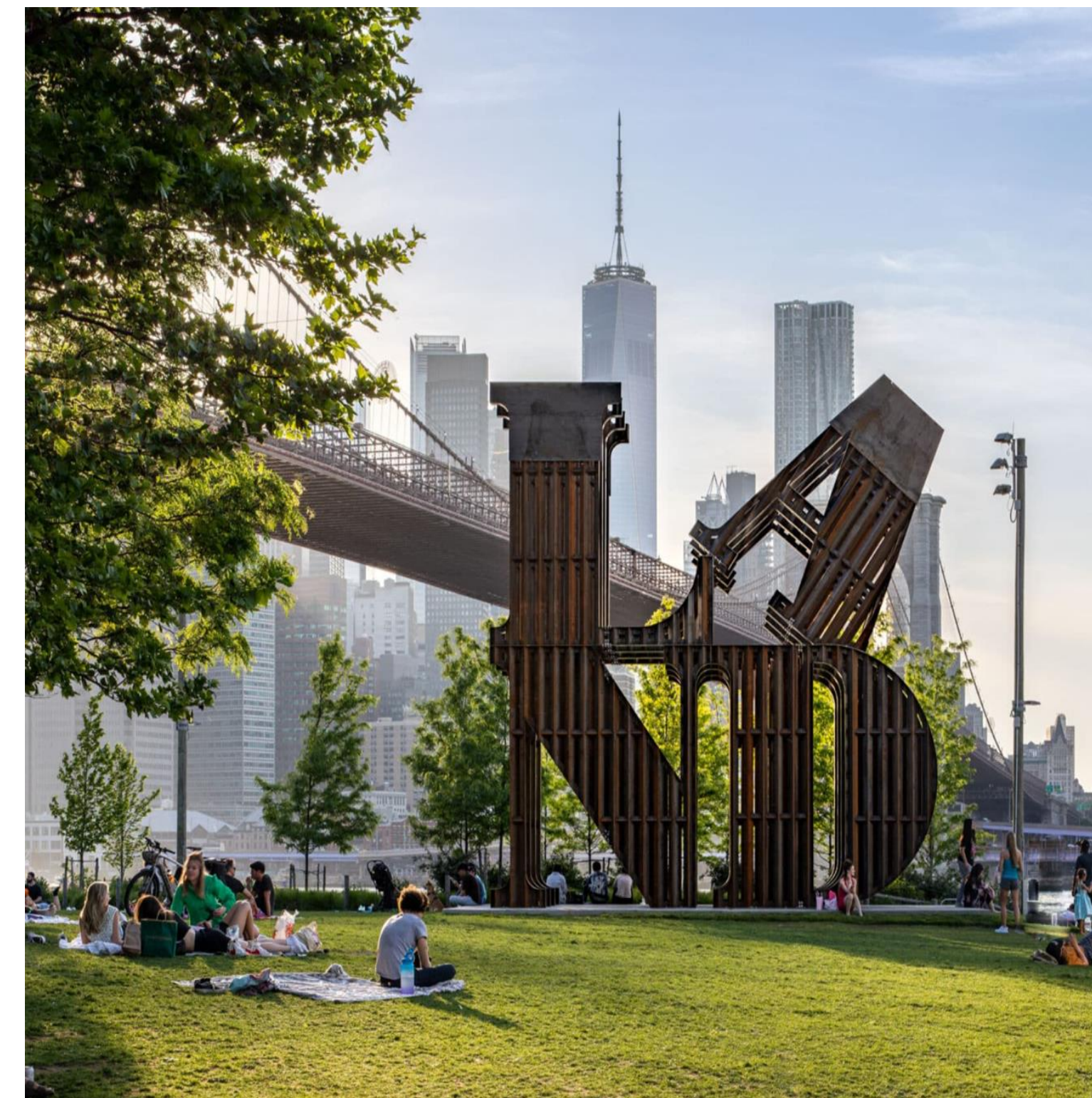
3

4

5  
HIGH

## 2 Public Art

Provides opportunity to feature local artists and can reimagine MCT as a cultural destination. Potential locations may include sidewalks and plazas between West 46th and 54th Streets on the west side of 12th Avenue.



How would you **score** this intervention?

Estimated Level of Complexity

**Low**

1  
LOW

2

3

4

5  
HIGH

## 3 Temporary Retail

Provides an unexpected opportunity to shop steps from MCT. Potential locations may include along the sidewalks of the piers, MCT and plazas between West 46th and 54th Streets on the west side of 12th Avenue.



How would you **score** this intervention?

Estimated Level of Complexity

**Low**

1  
LOW

2

3

4

5  
HIGH

## 4 Permanent Retail

Provides a consistent place to shop steps from MCT. Potential locations may include sidewalks and plazas between West 46th and 54th Streets on the west side of 12th Avenue or on MCT piers.



How would you **score** this intervention?

Estimated Level of Complexity

**High**

1  
LOW

2

3

4

5  
HIGH

## 5 Temporary Food & Beverage

Provides an unexpected opportunity to grab a snack or meal steps from MCT. Potential locations may include sidewalks and plazas between West 46th and 54th Streets on the west side of 12th Avenue.



How would you **score** this intervention?

Estimated Level of Complexity

**Low**

1  
LOW

2

3

4

5  
HIGH

## 6 Permanent Food & Beverage

Provides a consistent place to grab a snack or meal steps from MCT. Potential locations may include sidewalks and plazas between West 46th and 54th Streets on the west side of 12th Avenue or on MCT piers.



How would you **score** this intervention?

Estimated Level of Complexity

**High**

1  
LOW

2

3

4

5  
HIGH

Are there any **activations & retail** interventions you would like to be implemented that you didn't see tonight?

Add your thoughts here!

In your opinion, what is the most important factor when choosing one **activations & retail** intervention over another?

Add your thoughts here!

Do you have any other questions, concerns, or ideas regarding **activations & retail** at Manhattan Cruise Terminal?

Add your thoughts here!

## 1 Seating

To provide sustainable, durable, and flexible seating options while reducing waste and promoting environmental responsibility in public spaces. Potential locations may include sidewalks and plazas between West 46th and 54th Streets on the west side of 12th Avenue.



How would you **score** this intervention?

Estimated Level of Complexity

**Low**

1  
LOW

2

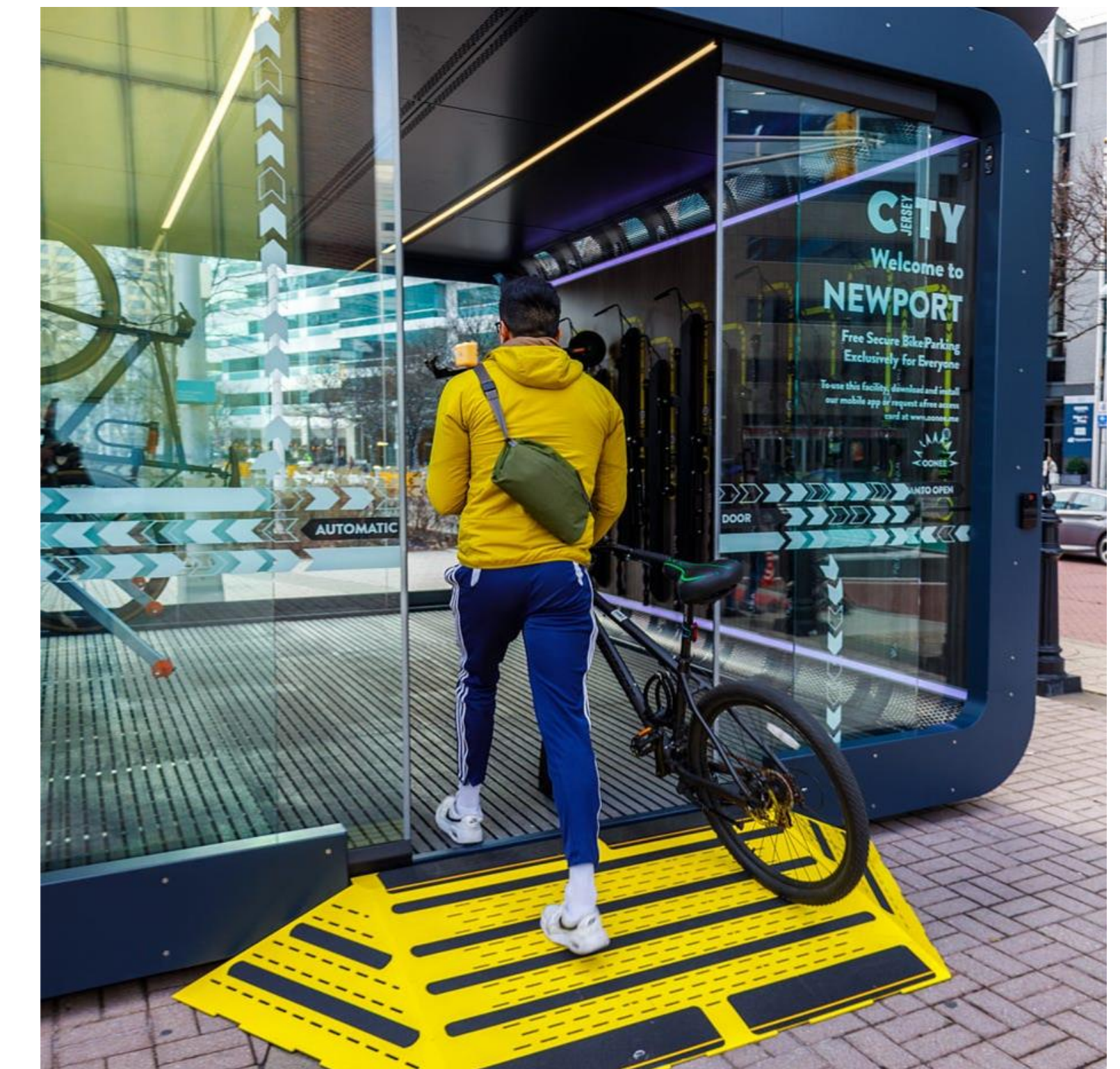
3

4

5  
HIGH

## 2 Bike Corrals

Secure parking spaces for bicycles, providing a safe and organized place for cyclists to park their bikes. Potential locations may include sidewalks and plazas between West 46th and 54th Streets on the west side of 12th Avenue.



How would you **score** this intervention?

Estimated Level of Complexity

**Low**

1  
LOW

2

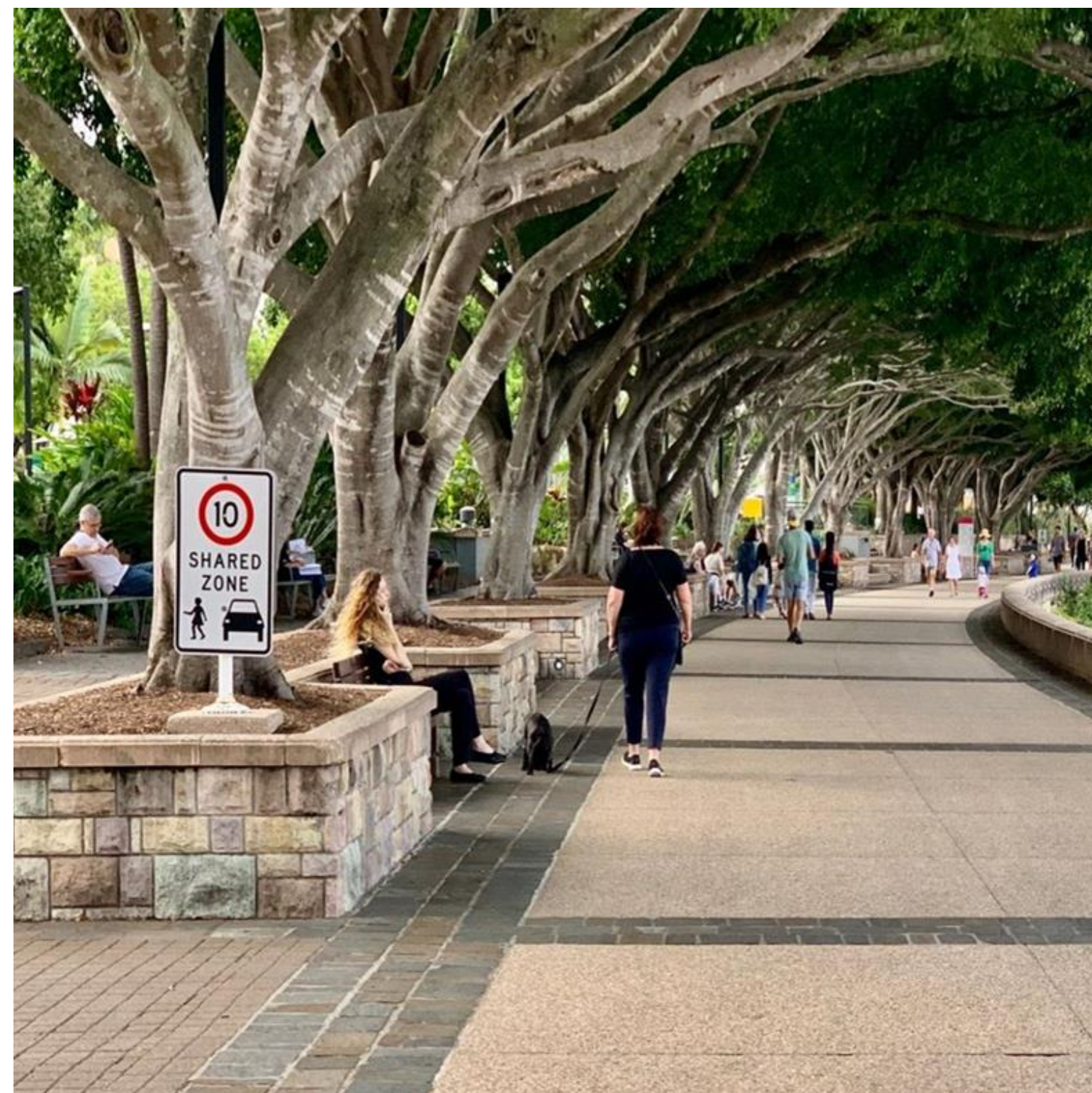
3

4

5  
HIGH

## 3 Landscaping

Providing more trees, open space, improving air quality, and enhancing the aesthetic and environmental value of a space. Potential locations may include sidewalks and plazas between West 46th and 54th Streets on the west side of 12th Avenue.



How would you **score** this intervention?

Estimated Level of Complexity

**Medium**

1  
LOW

2

3

4

5  
HIGH

## 4 Luggage Lockers

Provide terminal users with a secure, convenient place to store their belongings temporarily, allowing them to explore or relax without the burden of carrying luggage. Potential locations may include MCT piers.



How would you **score** this intervention?

Estimated Level of Complexity

**Low**

1  
LOW

2

3

4

5  
HIGH

## 5 Public Bathrooms

Ensuring convenience, hygiene, and comfort for residents and visitors to MCT. Potential locations may include sidewalks and plazas between West 46th and 54th Streets on the west side of 12th Avenue.



How would you **score** this intervention?

Estimated Level of Complexity

**Medium**

1  
LOW

2

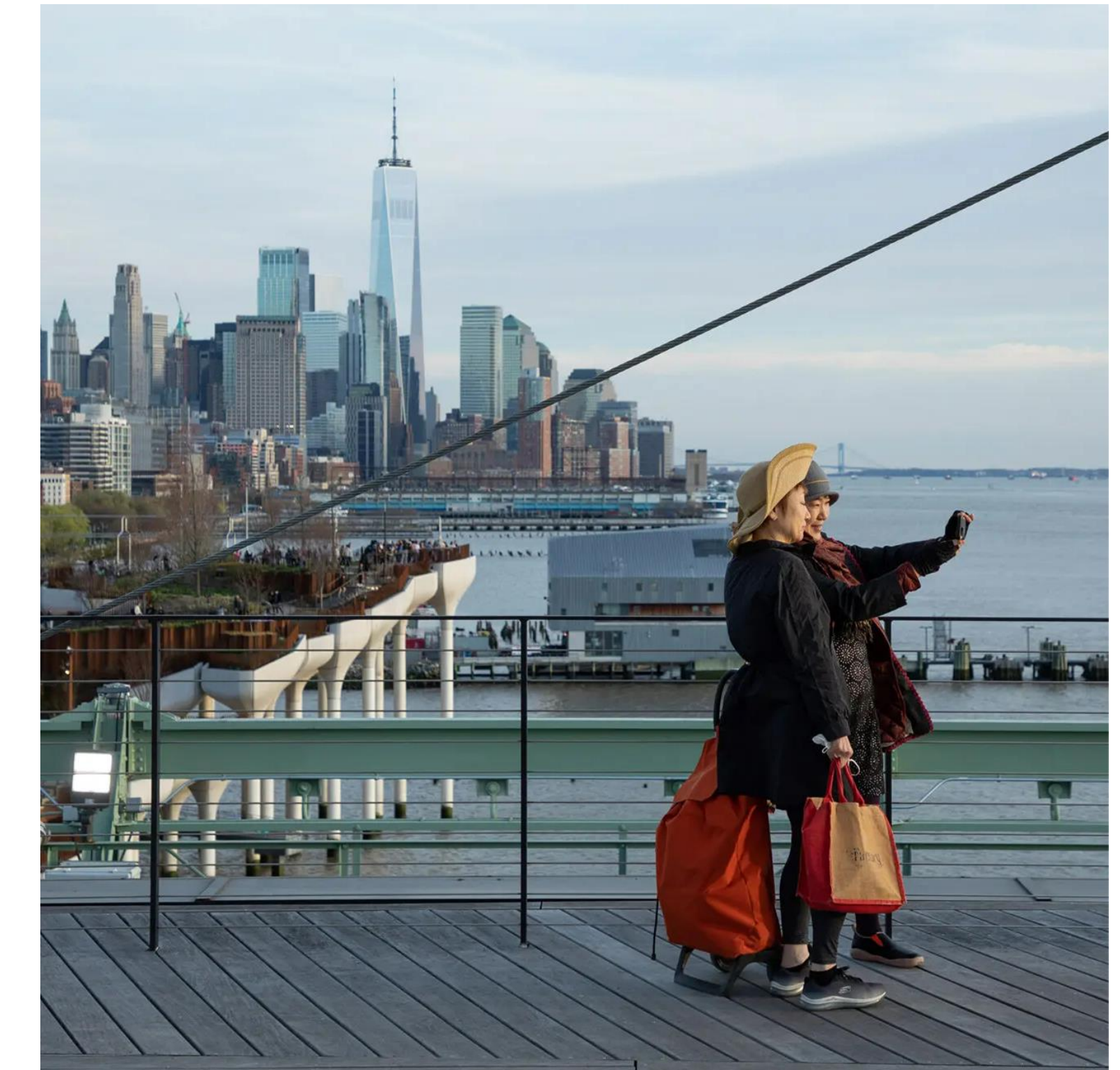
3

4

5  
HIGH

## 6 Lookout Plaza

Viewing natural or urban landscapes, offering seating and amenities for visitors to enjoy panoramic vistas. Potential locations may include sidewalks and plazas between West 46th and 54th Streets on the west side of 12th Avenue.



How would you **score** this intervention?

Estimated Level of Complexity

**High**

1  
LOW

2

3

4

5  
HIGH



Are there any **streetscape** interventions you would like to be implemented that you didn't see tonight?

Add your thoughts here!

In your opinion, what is the most important factor when choosing one **streetscape** intervention over another?

Add your thoughts here!

Do you have any other questions, concerns, or ideas regarding **streetscape** at Manhattan Cruise Terminal?

Add your thoughts here!