

East Midtown Waterfront Project

Community Working Group
May 21, 2012



Agenda

An aerial, high-angle photograph of a city waterfront, likely New York City. The image shows a dense cluster of skyscrapers and buildings along the edge of a body of water. A prominent bridge with a white, lattice-like structure spans across the water in the lower right portion of the frame. The overall scene is captured in a slightly desaturated, light blue-grey color palette, giving it a professional and clean appearance. The text of the agenda is overlaid on the left side of the image.

- 1. Project Background**
- 2. Site Context**
- 3. Opportunities**
- 4. Breakout Session**
- 5. Reporting Back**
- 6. Closing and Next Steps**



1. Project Background

Project Site



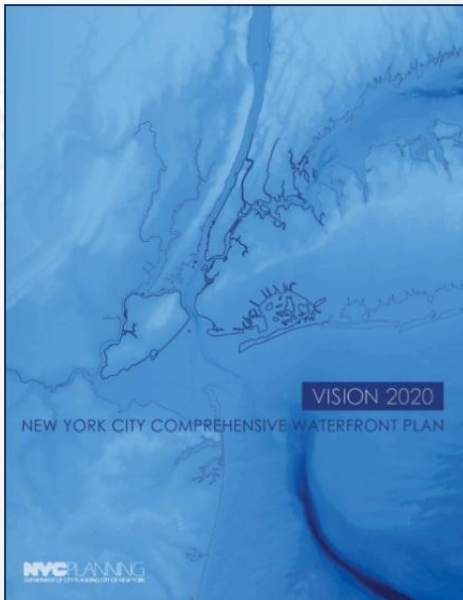
Manhattan Waterfront Greenway



Project Overview

Why now?

- City policy promotes public access and active uses on waterfront
- Opportunity to leverage UN's space needs into funding for major piece of public infrastructure



West Harlem Piers Park

Project Overview

+ Initial project milestones

- ✓ State legislation (July 2011) and MOU (October 2011)
- ✓ Establishment of Eastside Greenway and Park (EGAP) Board
 - *Conceptual design of future esplanade*
 - Completion of required City and UN milestones
 - Restoration of Waterside Pier substructure

+ Funding sources for esplanade

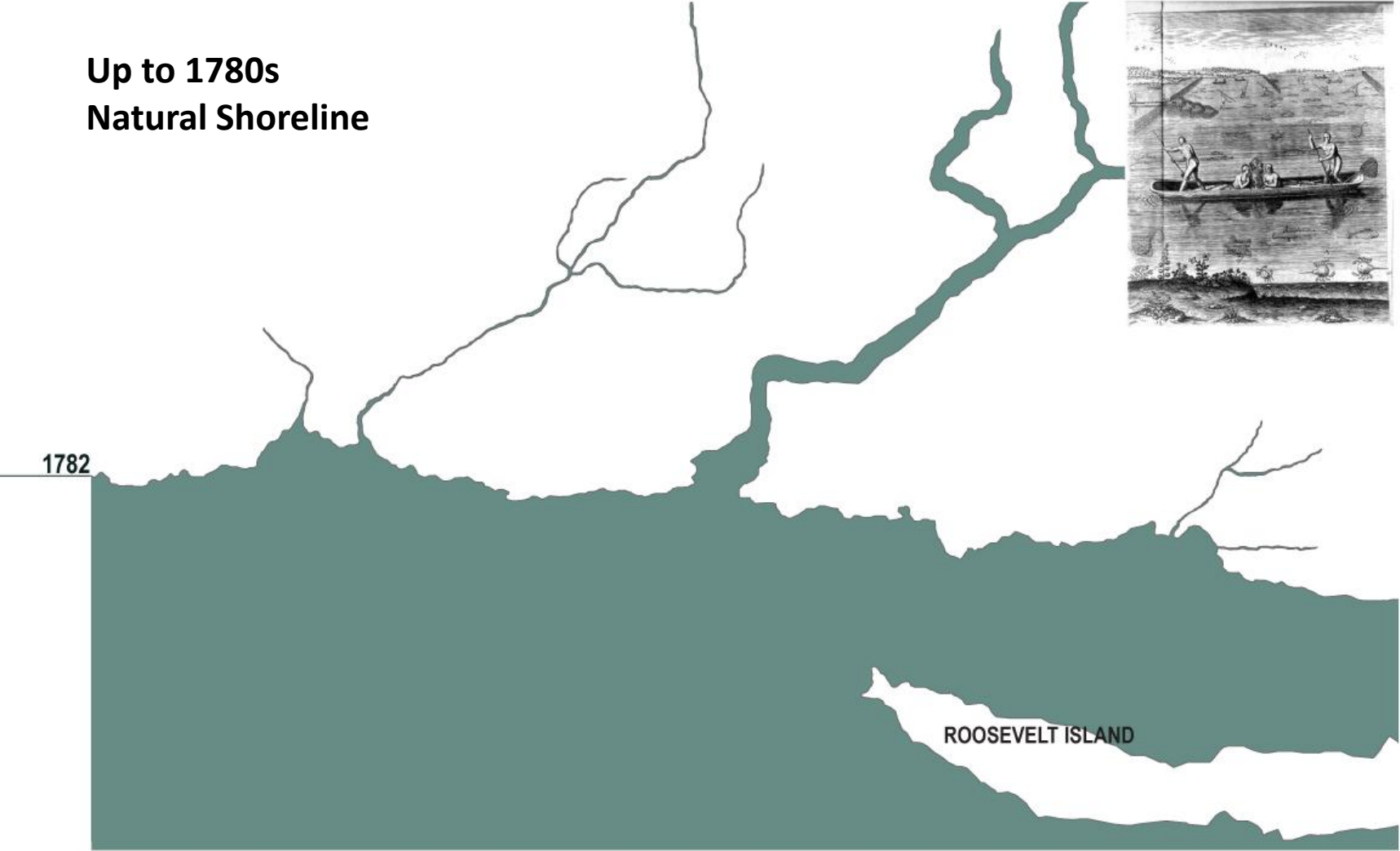
- ✓ Esplanade planning: \$3 million initial payment from UNDC to EGAP Fund; approx. \$2 million from Federal, State, and City sources
- ✓ Waterside Pier restoration: \$13 million from Con Edison
 - Esplanade construction: \$70 million from UNDC to EGAP Fund; funding from expected disposition of UN Plaza 1 & 2 (2018 or later)
 - \$70 million only becomes available if UN project advances



2. Site Context

Site History

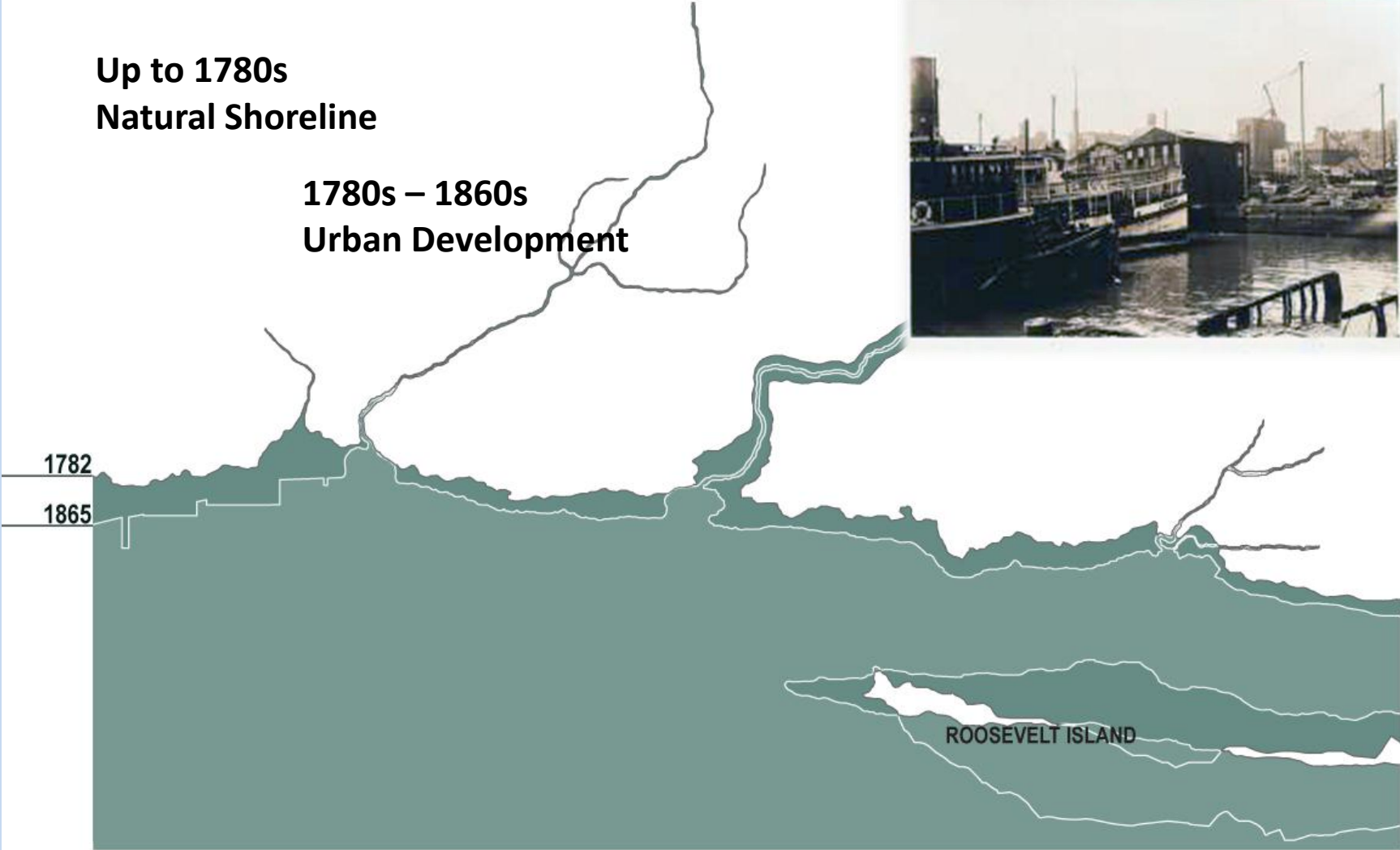
Up to 1780s
Natural Shoreline



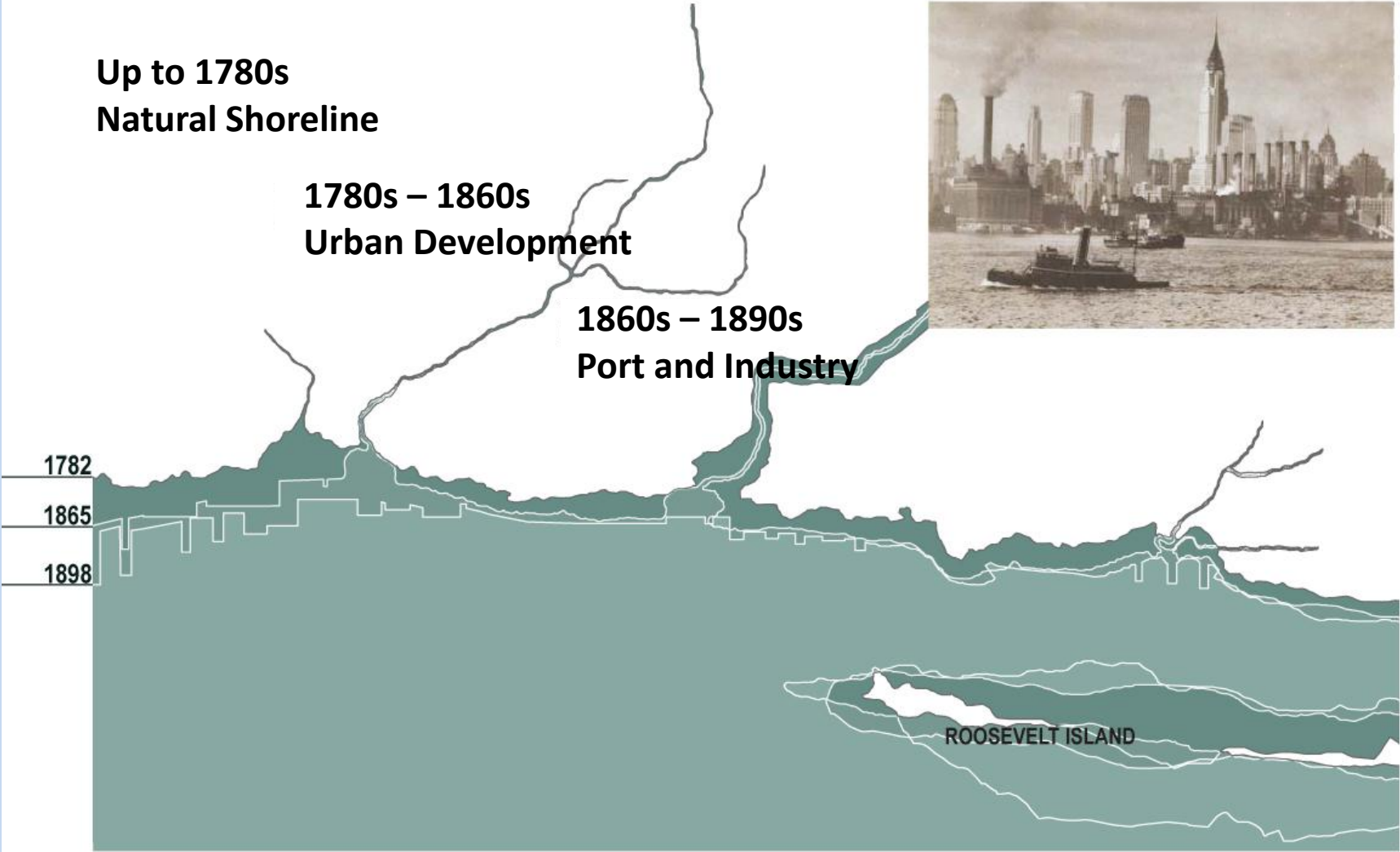
Site History

Up to 1780s
Natural Shoreline

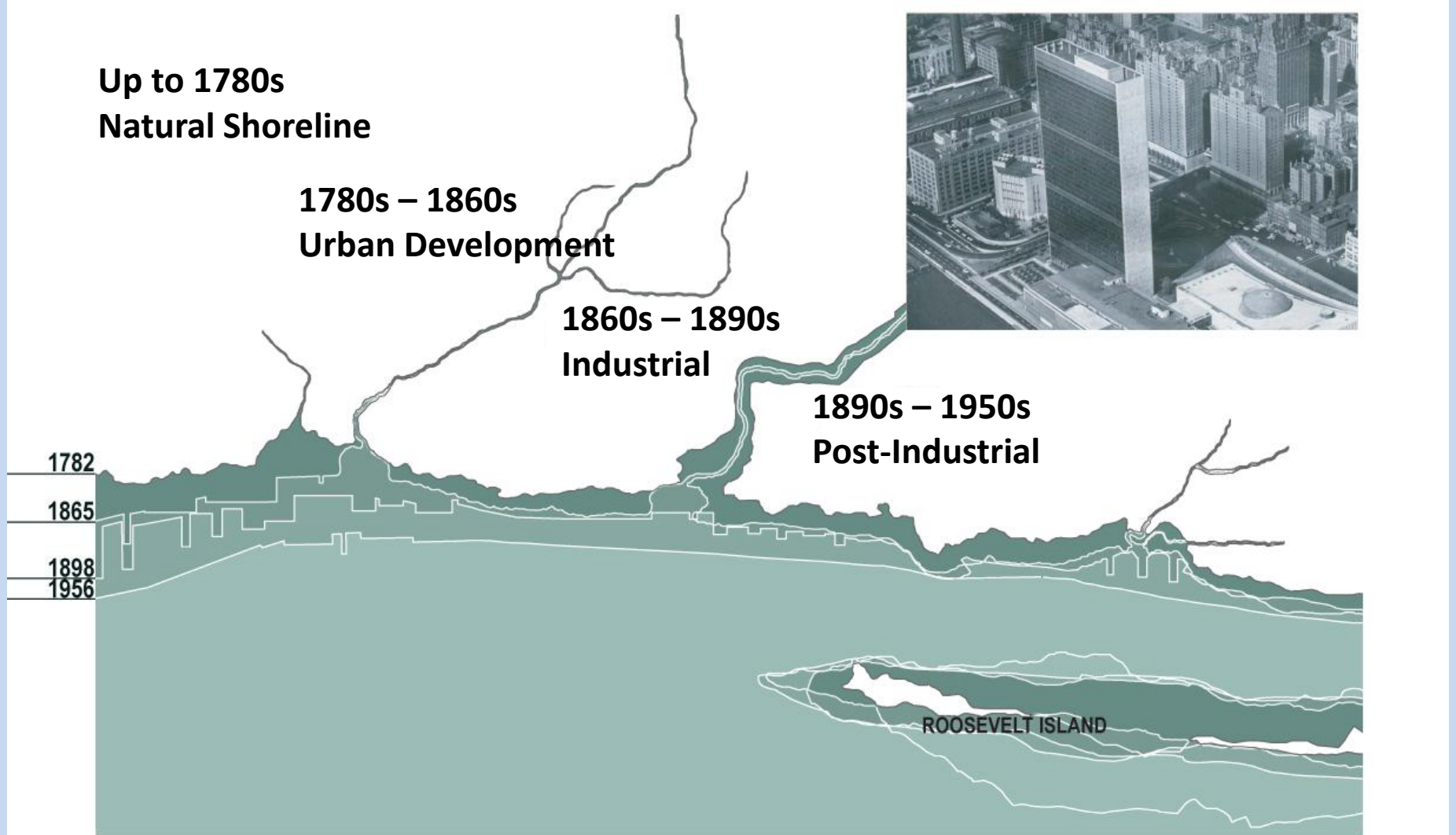
1780s – 1860s
Urban Development



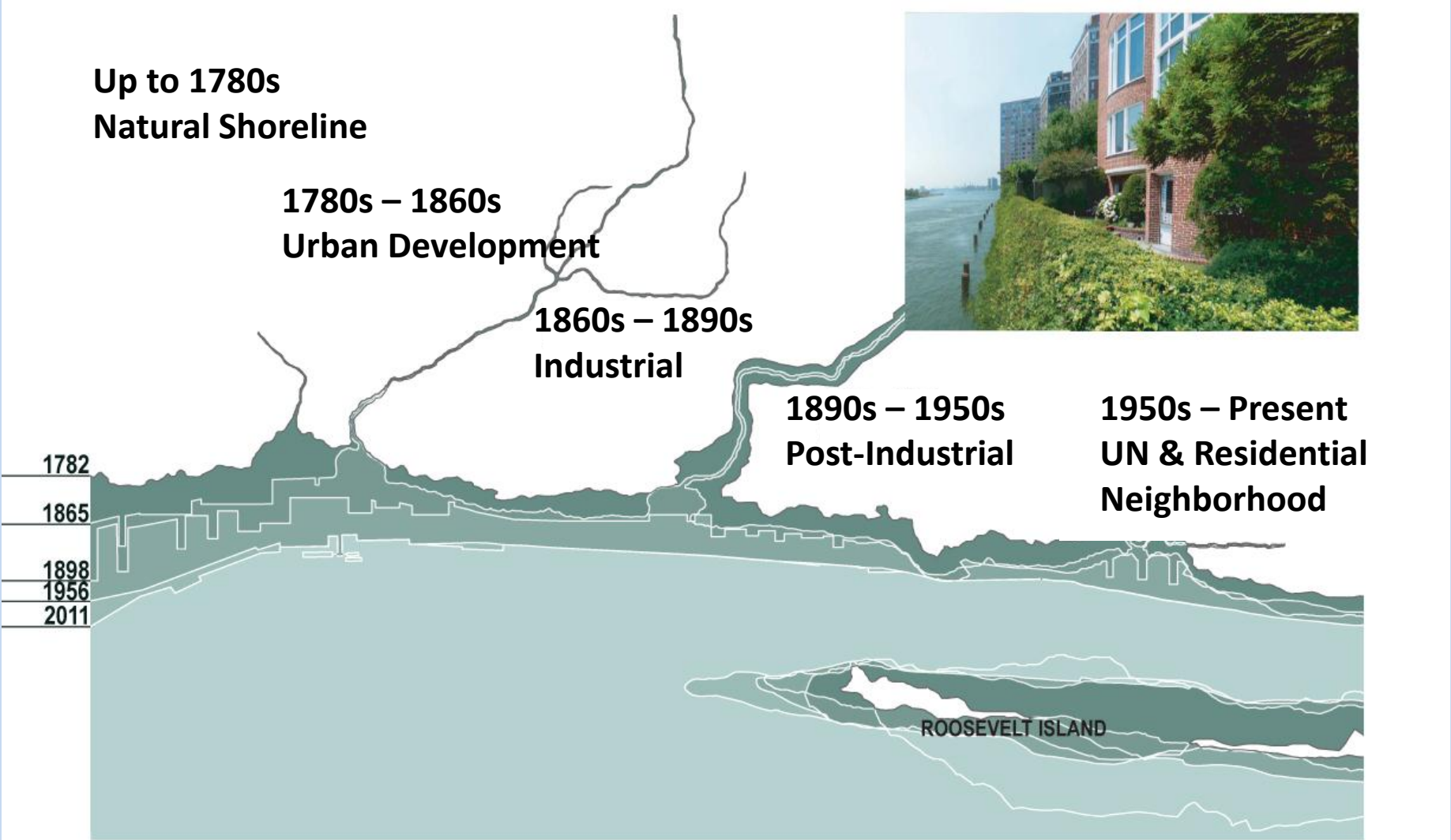
Site History



Site History



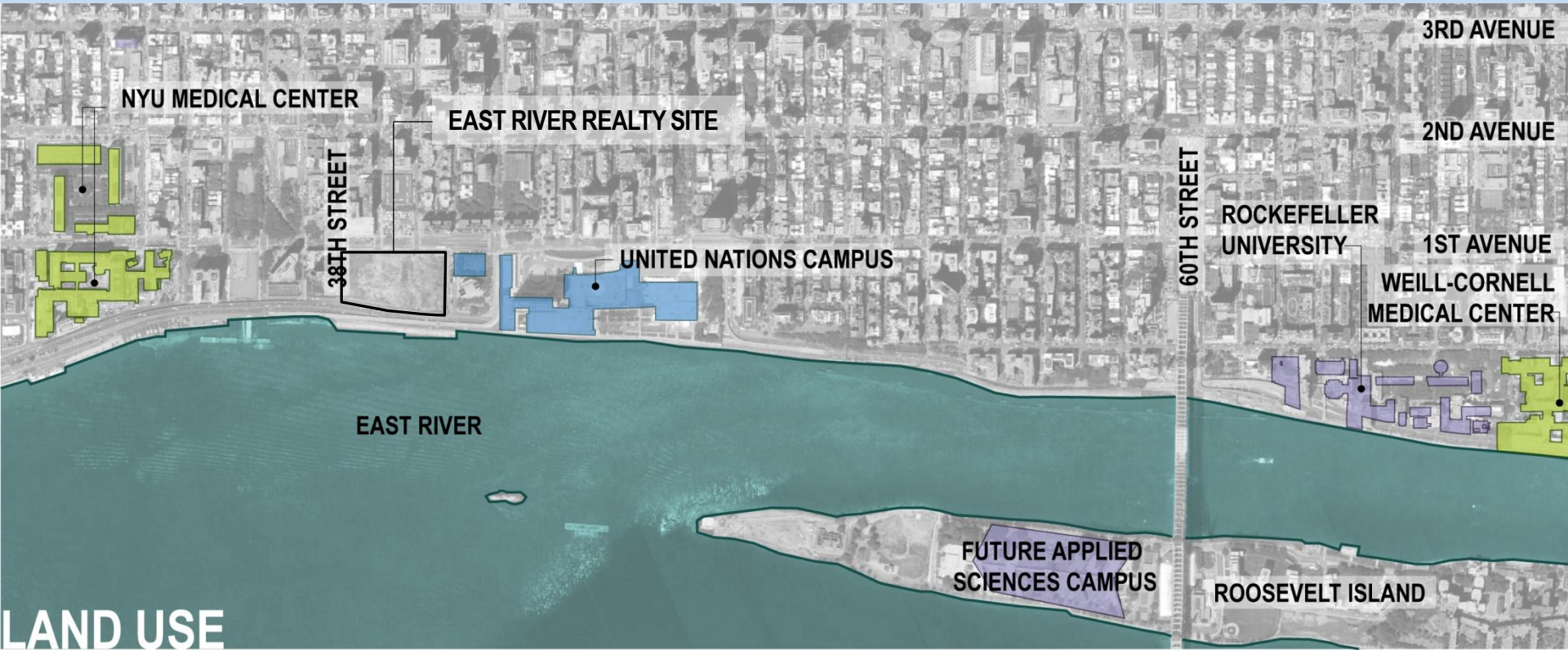
Site History



Site Description



Site Description



LAND USE

INSTITUTIONAL LAND USES

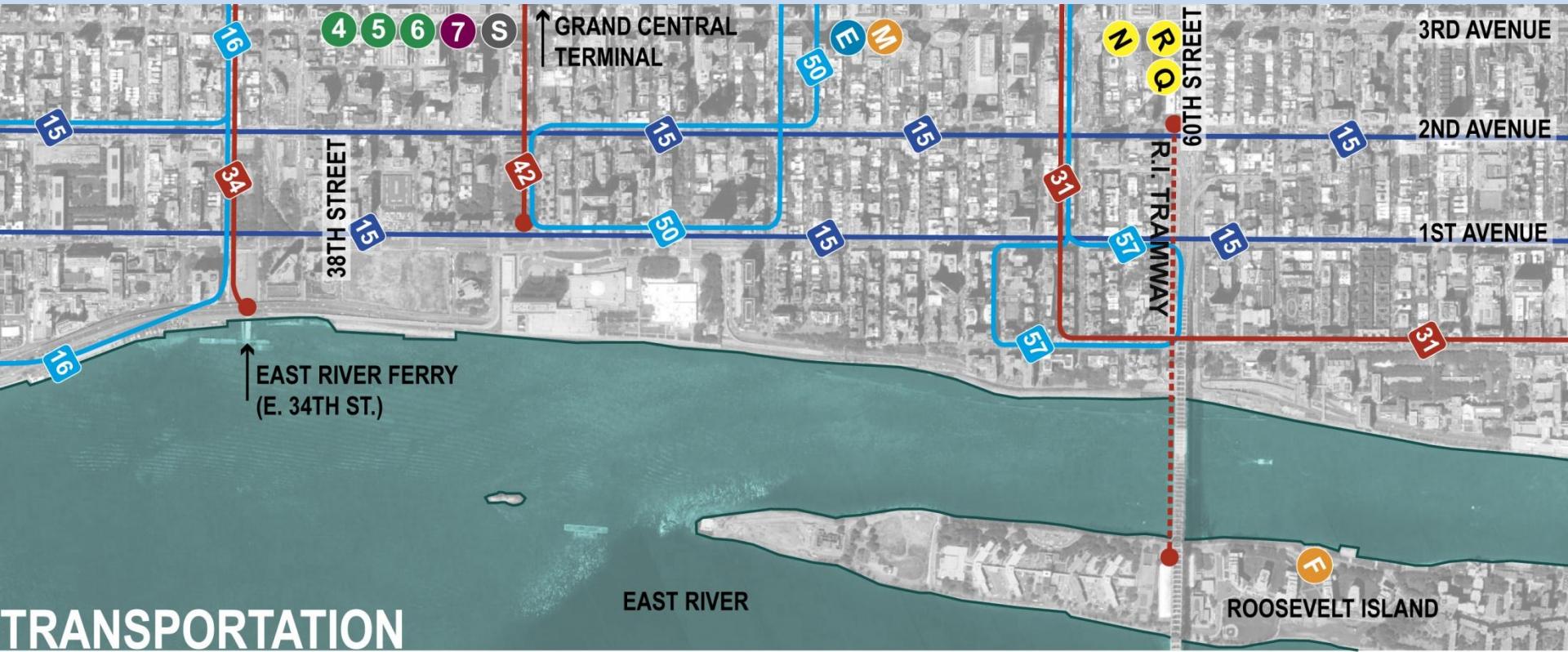
UNITED NATIONS

MEDICAL




EDUCATIONAL



Site Description

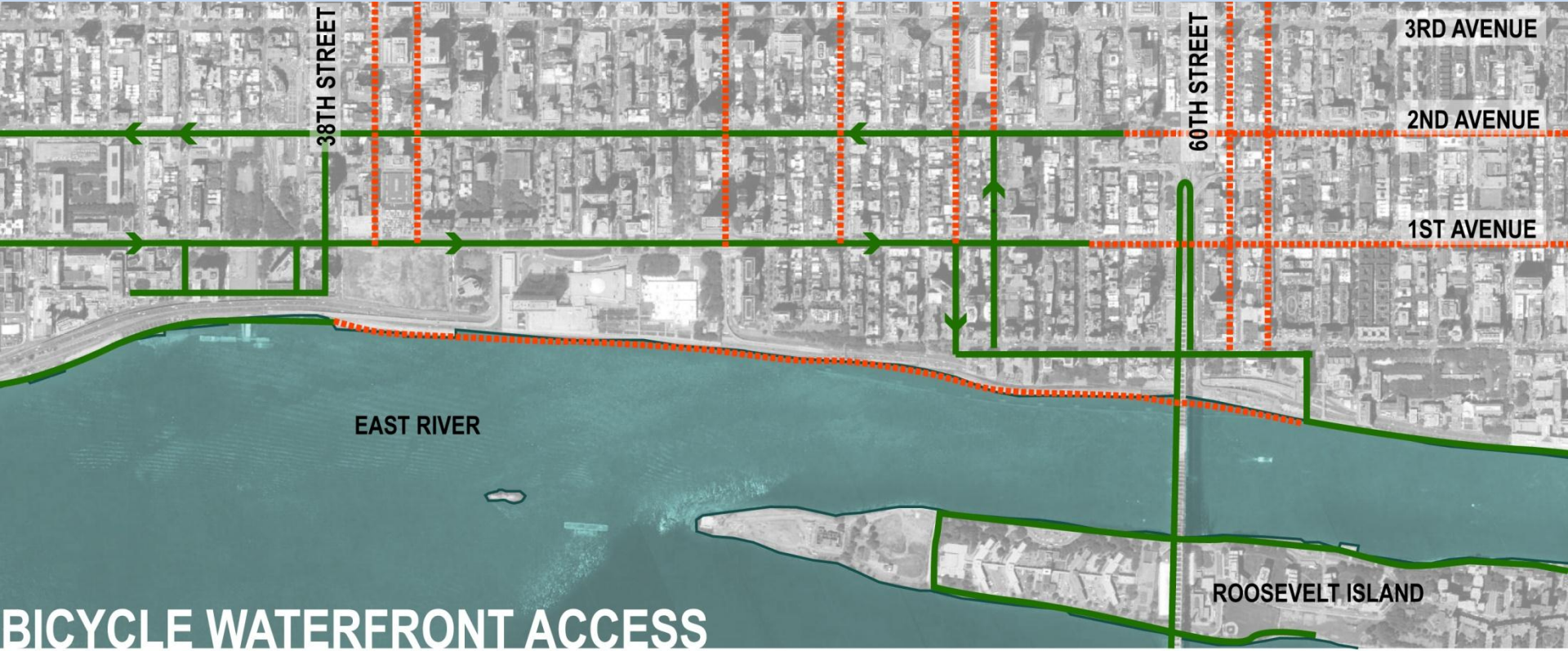


TRANSPORTATION

-  BUS ROUTE
-  TRAMWAY
-  SUBWAY STATION



Site Description



BICYCLE WATERFRONT ACCESS

1990 10,900 CYCLISTS

2010 34,100 CYCLISTS

SOURCE: NYC DOT based on a 12 hour screenline count

2006 220 MILES OF BIKELANE

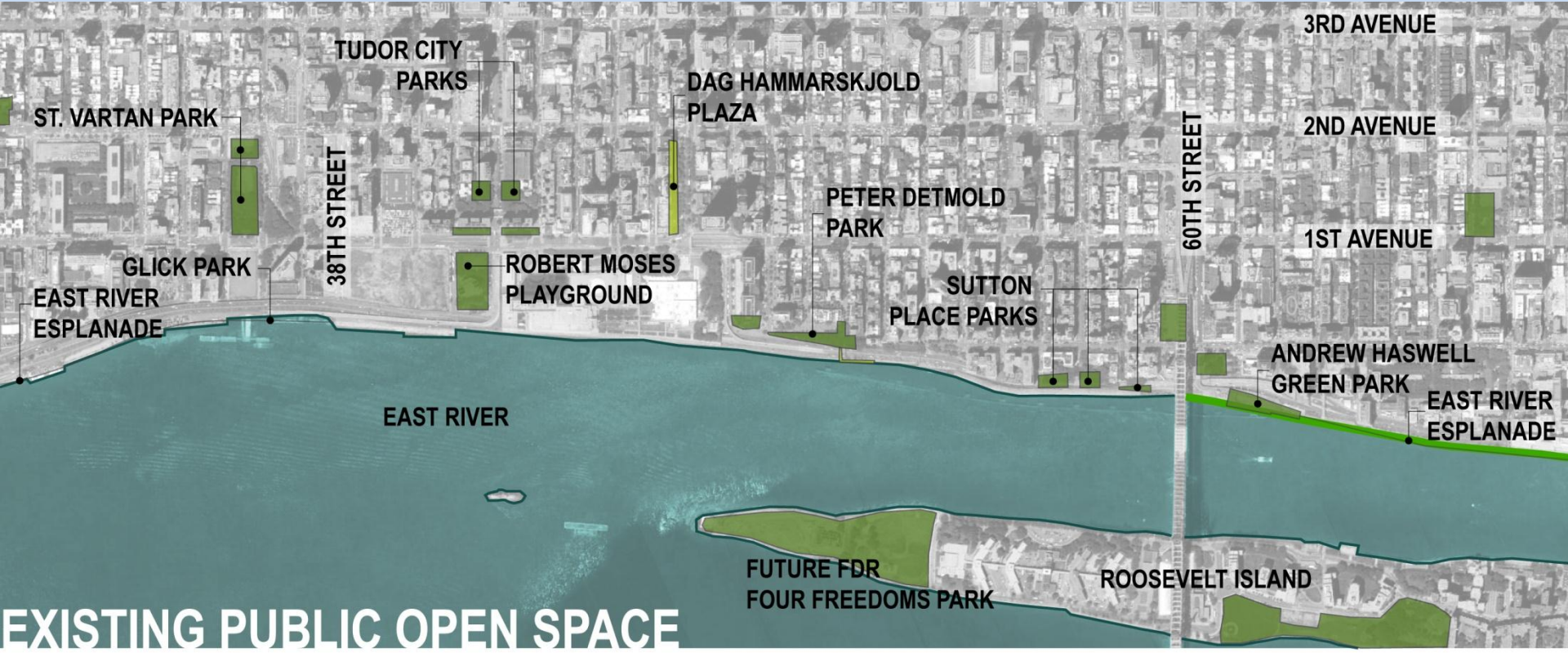
2009 424.5 MILES OF BIKE LANE

SOURCE: NYC DOT



- EXISTING BICYCLE ROUTE
- - - POTENTIAL BICYCLE ROUTE

Site Description



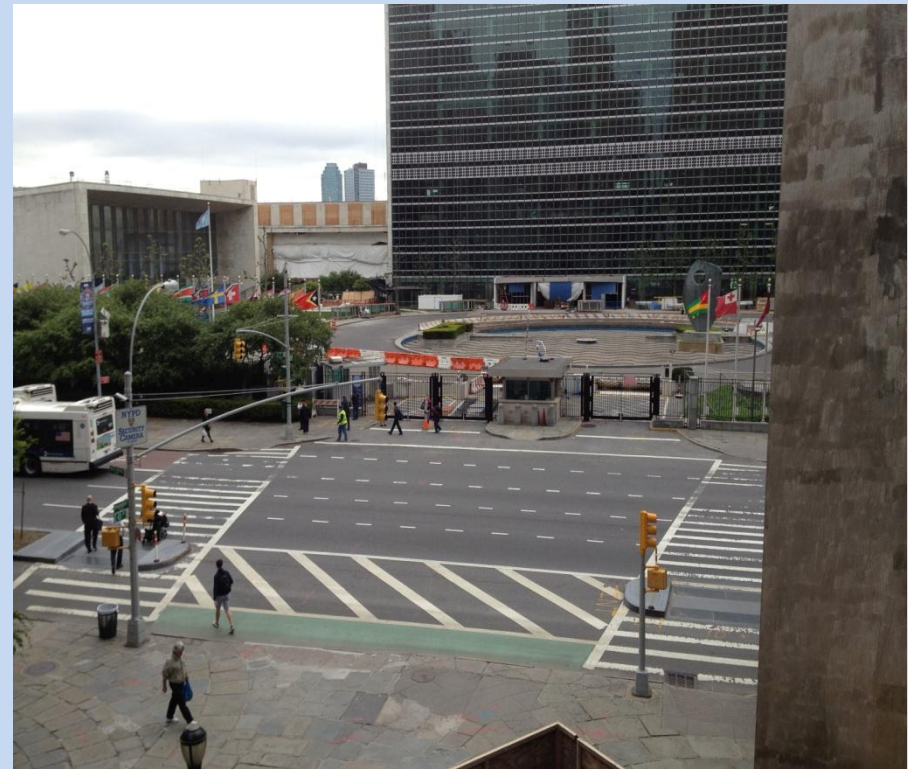
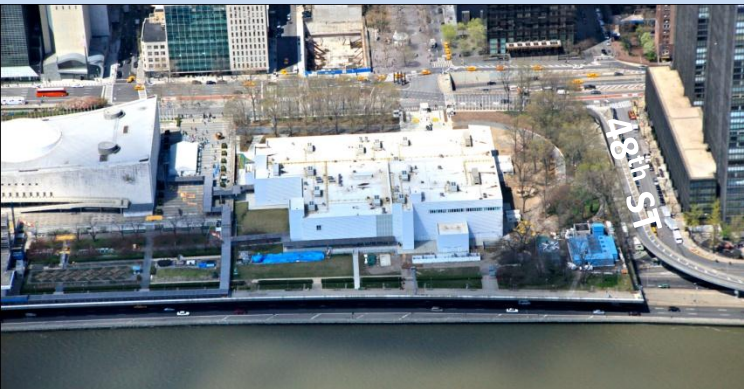
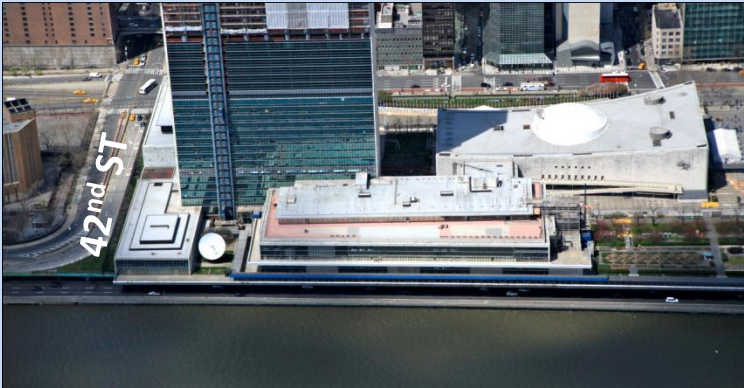
Site Tour – Waterside Pier (38th-41st Streets)

- + Formerly used by Con Edison for fuel deliveries
- + Approx. 0.8 acre in size, ±45 feet wide
- + Deck, substructure, pilings are in poor condition, need extensive improvements to allow for public use



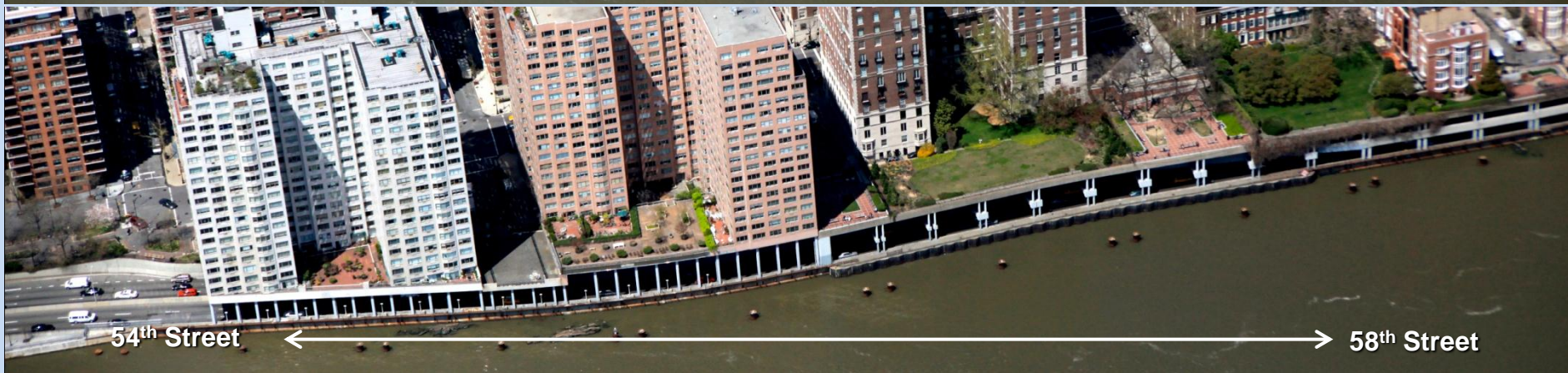
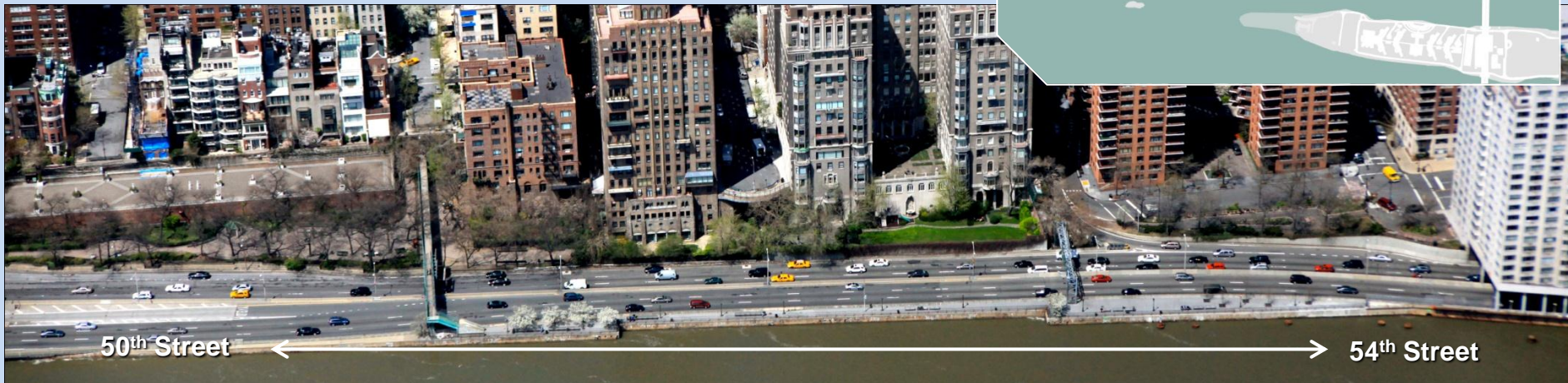
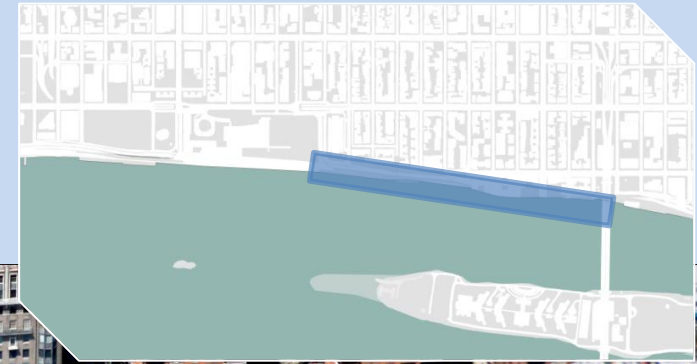
Site Tour – UN Campus (42nd-48th Streets)

- + NYC and world landmark, but also major physical barrier to public waterfront access
- + In close proximity to the UN, esplanade and upland connections could raise security issues



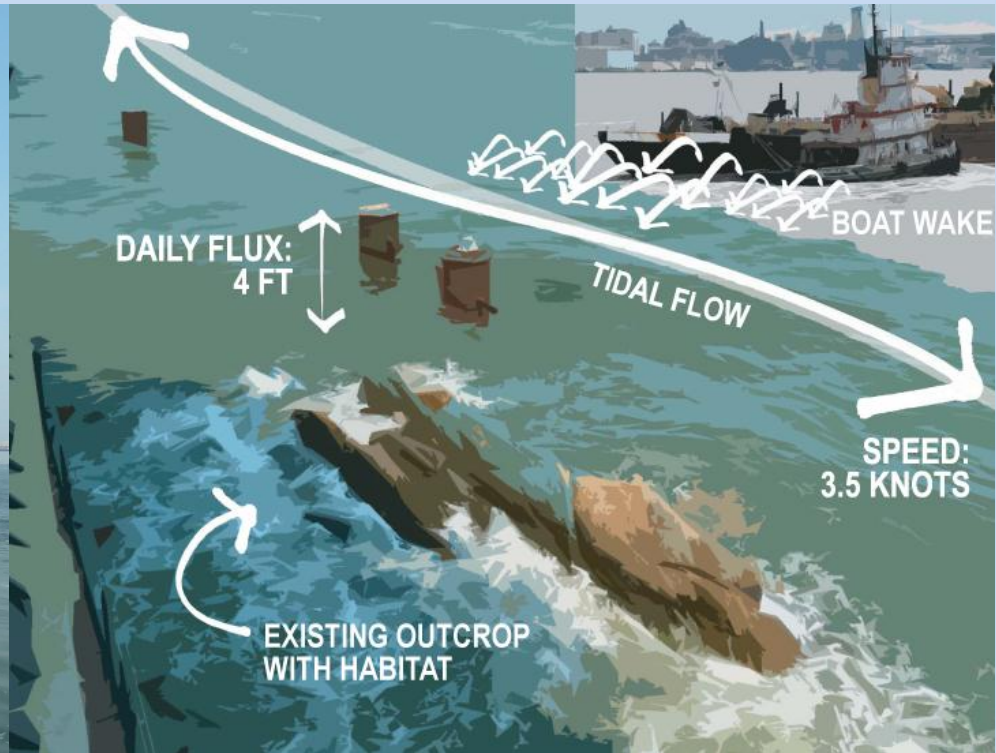
Site Tour – Street Grid (48th-60th Streets)

- + Small existing esplanade accessed by pedestrian bridge
- + North of 54th Street, apartment buildings and street ends extend over FDR to river's edge



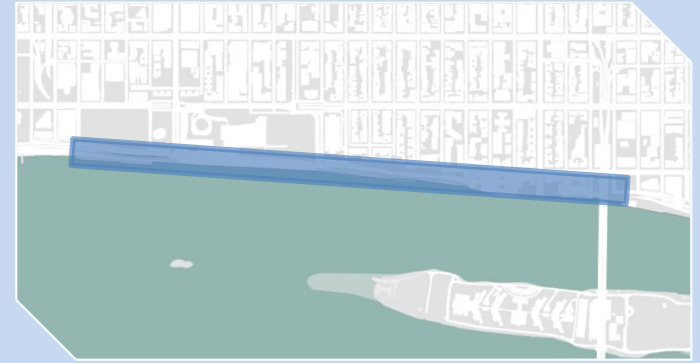
Site Tour – River Conditions

- + Currents in this section of East River are quite strong and can be very dangerous
- + Water level rises and falls considerably due to tides and boat wakes
- + In recent years, marine life such as oysters has been observed



Site Tour – FDR Drive

- + Runs along river for entire length of site
- + Poses a major challenge for access to the esplanade
- + Source of noise and exhaust fumes



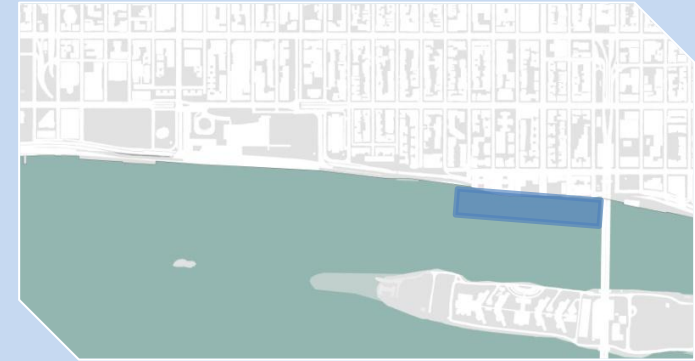
View north from UN Campus at 48th Street



View south from pedestrian bridge at 51st Street

Site Tour – ODR Caissons

- + 24 caissons remain from Outboard Detour Roadway (ODR) built during reconstruction of FDR
- + Caissons are in good condition, could possibly be used to support esplanade structure

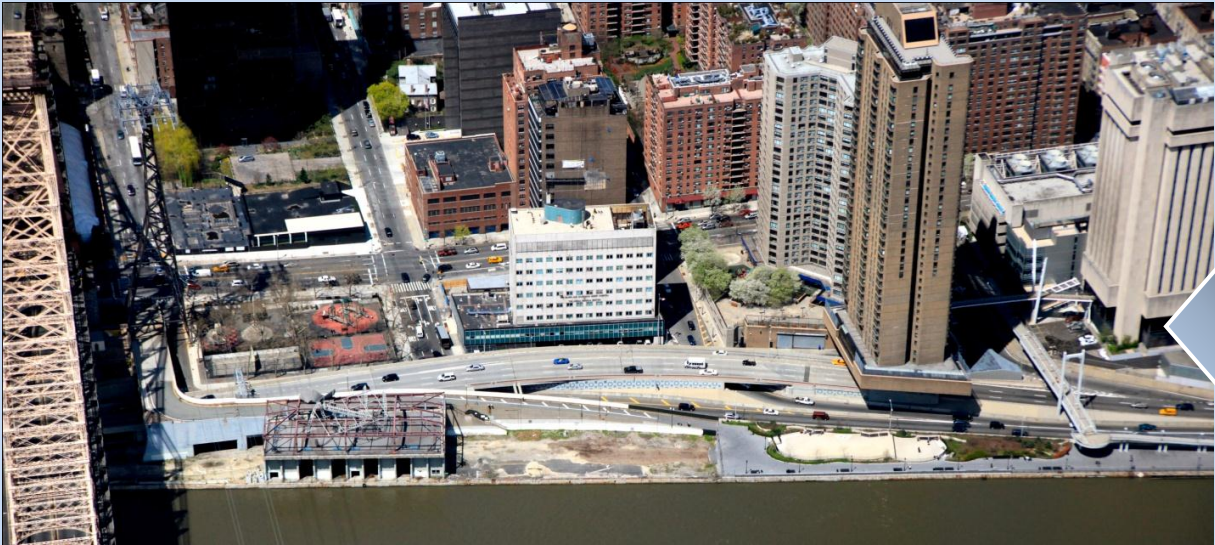


Site Tour – Existing Connections



37th Street
Glick Park
(not in project area)

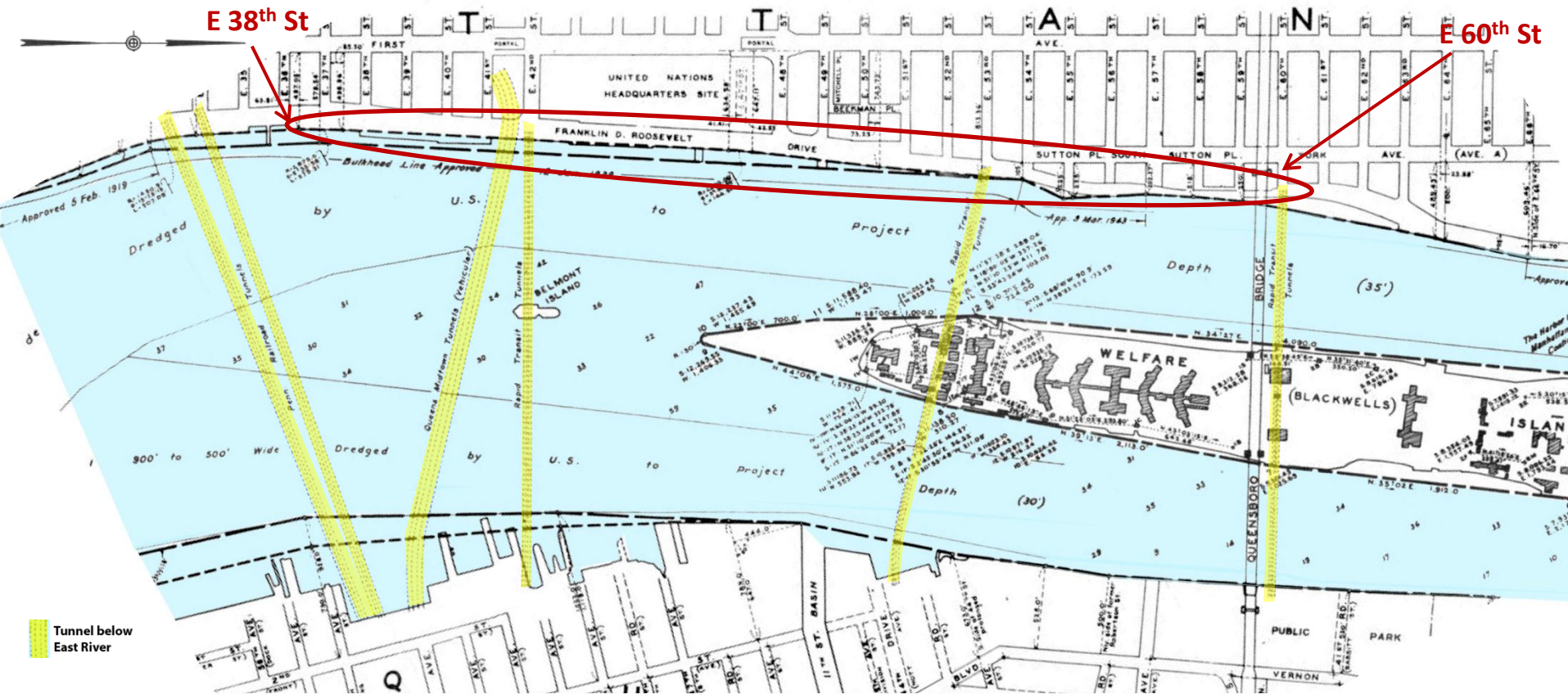
51st Street
Peter Detmold
Park



60th Street & 63rd Street
Andrew Haswell Green Park
East River Esplanade
(not in project area)

Site Tour – Infrastructure

- + Bulkheads and other infrastructure line river's edge
- + Multiple tunnels pass underneath project site
- + East River is busy shipping channel, with more than 60,000 vessels passing through annually



Site Tour – Subsurface Conditions

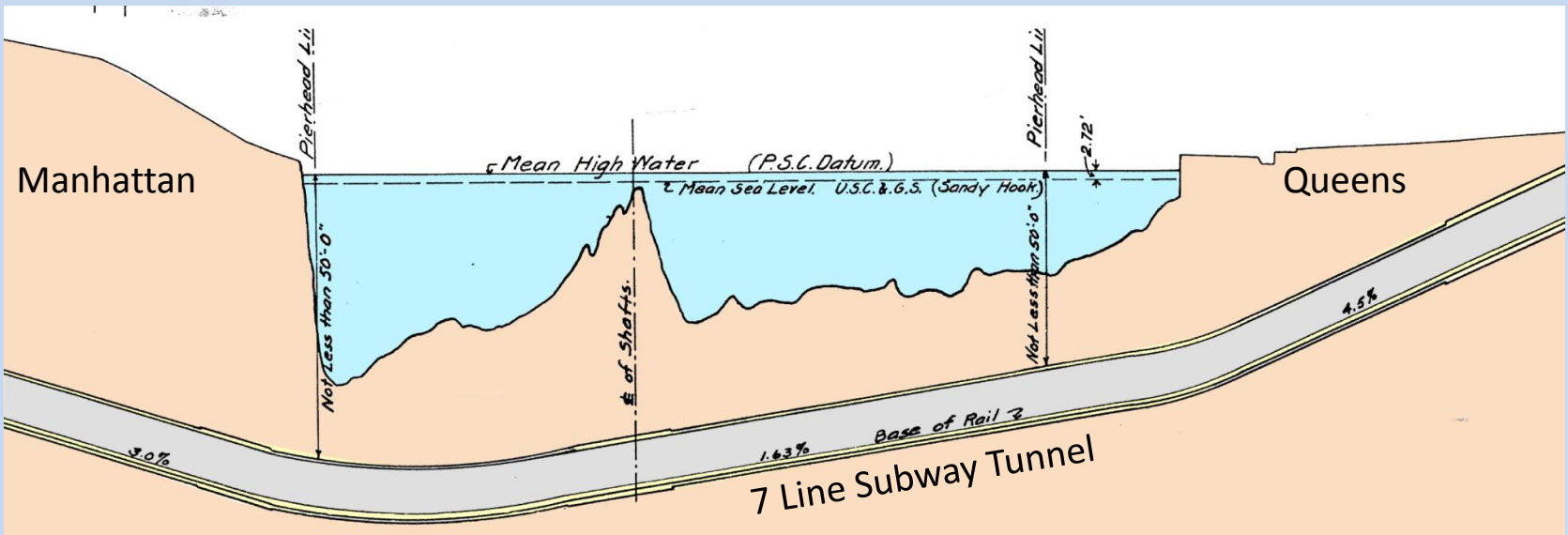
- + River is up to 100 feet deep near shoreline
- + Depth, angle, and quality of bedrock varies considerably



Test borings, March 2012



Waterside Pier substructure



Permitting



- + Permits required from State DEC related to construction in protected waters
- + DEC generally seeks to limit the coverage area of new in-water structures



**US Army Corps
of Engineers®**

- + Army Corps permits required for construction in navigable waterways



- + Coast Guard has influence on Army Corps' decision to grant permits

Cost and Budget Limitations

- + Constructing greenways and parks on structures in water is expensive
- + In recent projects such as East River Waterfront, Pier 25, and Riverside Park Riverwalk, parks on in-water structures were roughly three times more expensive, on average, than waterfront parks built mostly on land



Construction of Outboard Detour Roadway (ODR)



Construction of Pier 15, East River Waterfront Esplanade Phase I



3. Opportunities

Project Goals

An aerial photograph of the Manhattan waterfront, showing a dense urban landscape with numerous skyscrapers and buildings. In the foreground, a large bridge with a distinctive lattice structure spans across the water. The image is slightly faded to serve as a background for the text.

- + **Complete this section of the Manhattan Waterfront Greenway and create connections to the north and south**
- + **Connect neighborhoods to the waterfront**
- + **Create well-functioning and attractive public spaces**
- + **Work within physical and fiscal constraints to complete the project**

Themes: *Movement*



Portland (Oregon) Waterfront Greenway



Riverwalk, Riverside Park



Brisbane, Australia Waterfront



San Francisco Waterfront

Themes: *Connections*



Intrepid Bridge over West Side Highway



East 63rd Street Pedestrian Bridge



East 78th Street Pedestrian Bridge at John Jay Park

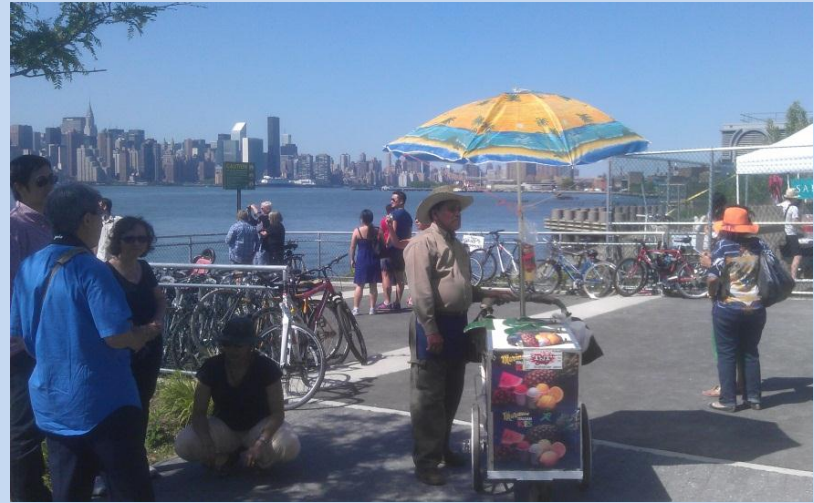


West Side Highway Pedestrian Crossing

Themes: *Activities*



Hoboken Waterfront



Williamsburg (Brooklyn) Waterfront



Gantry Plaza State Park, Queens



Stuyvesant Cove Park

Themes: *Public Spaces*



Adelaide, California



Jinji Lake Waterfront, Suzhou, China



Keelung Port, Taipei, Taiwan



Rhone River Banks, Lyon, France



4. Breakout Session

Questions

1. What would you like to do on the East Midtown Waterfront?
2. Where will people going to the esplanade be coming from, and where will they need to get on and off?
3. What are the top three features you would like to see on the esplanade, and where?



5. Reporting Back

Next Steps

- + Second working group meeting (targeting July) to present conceptual design options
 - + Third working group meeting (fall) to present preferred conceptual design
-

- + Working group to be convened in future when phases of esplanade receive funding and move forward

→ Please send any additional ideas, comments, or questions to

EastMidtownWaterfront@nycedc.com

→ Visit the project web page: www.nycedc.com/project/east-midtown-waterfront