

Agenda

- Overview - Development of the East Midtown Waterfront Esplanade
- Current East Midtown Greenway timeline
- Public Art Introduction



53rd Street Node looking north

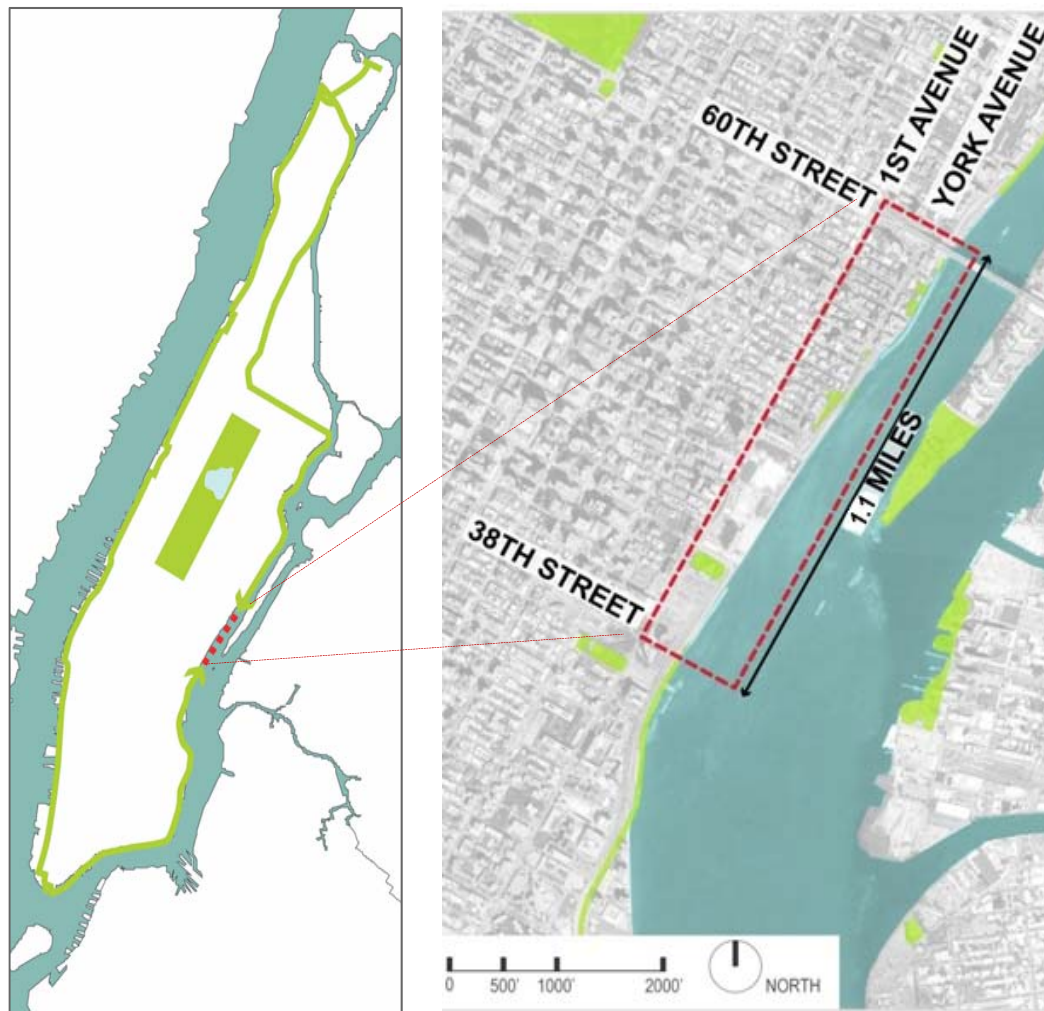


ODR and UN esplanades from Sutton Place looking south

East Midtown Waterfront Esplanade Overview

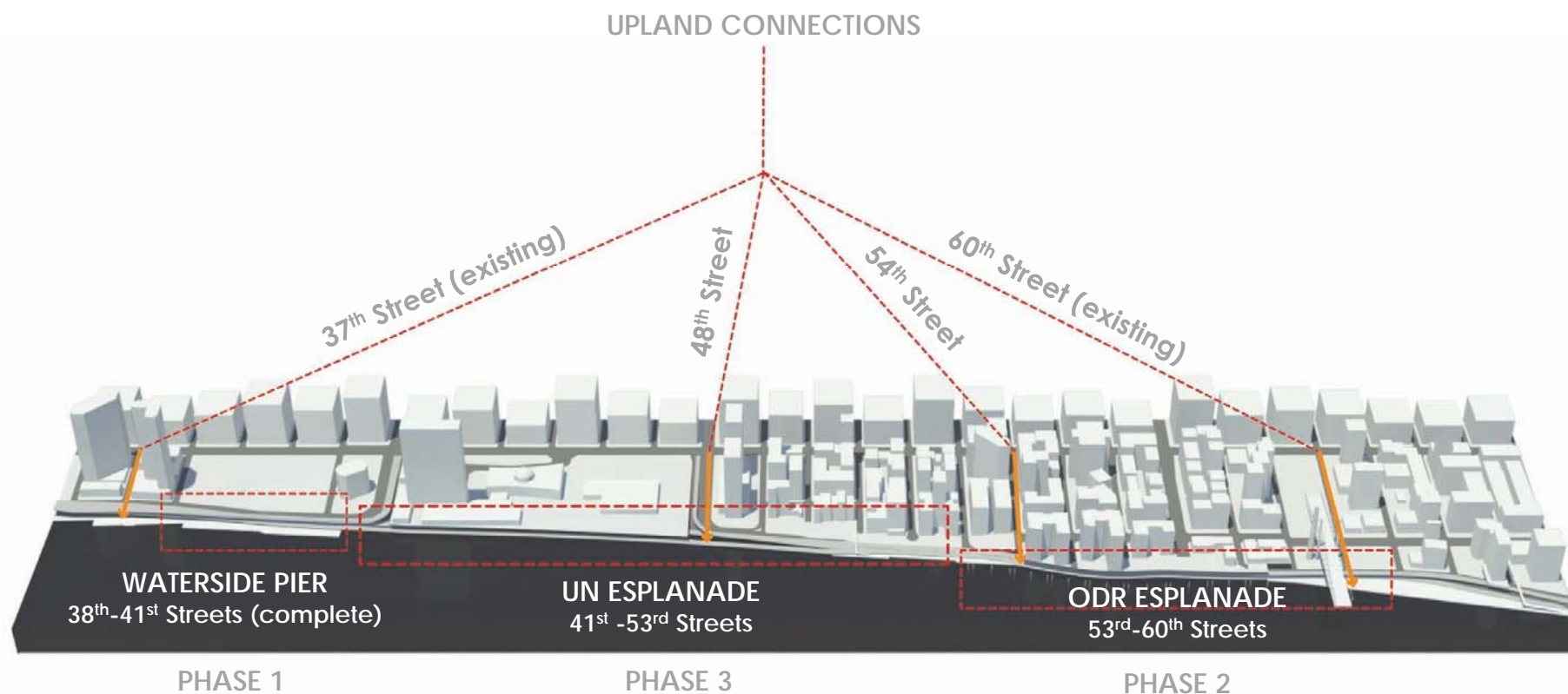
The EMWE project aims to close a 1.1-mile gap in the Manhattan Greenway

- Project purpose:
 - Construct a continuous esplanade from East 38th – East 60th Street along the East River
 - Provide critical transportation connection
 - Create new open space to alleviate chronic shortage in the immediate area



East Midtown Waterfront Esplanade Overview

The EMWE project included three sections, to be completed in phases, with new upland connections



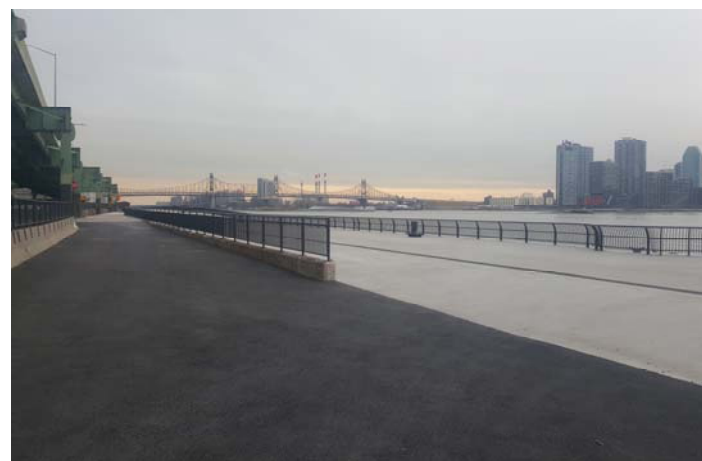
East Midtown Waterfront Esplanade Milestones

The City has completed Asser Levy Park, Waterside Pier, and obtained permits for the UN and ODR Esplanades

- City worked with Community Working Group to develop conceptual designs for Waterside Pier, ODR & UN Esplanades (2012-2013)
- Permit applications submitted to DEC, Army Corps, and Coast Guard (2013)
- Asser Levy Place mapped as parkland and activated for recreational use (2014)
- Environmental review complete (2015)
- Waterside Pier reconstructed and opened to the public (2016)
- DEC and USCG permits obtained for UN & ODR Esplanades (2016)
 - Additional permits would be needed for final design

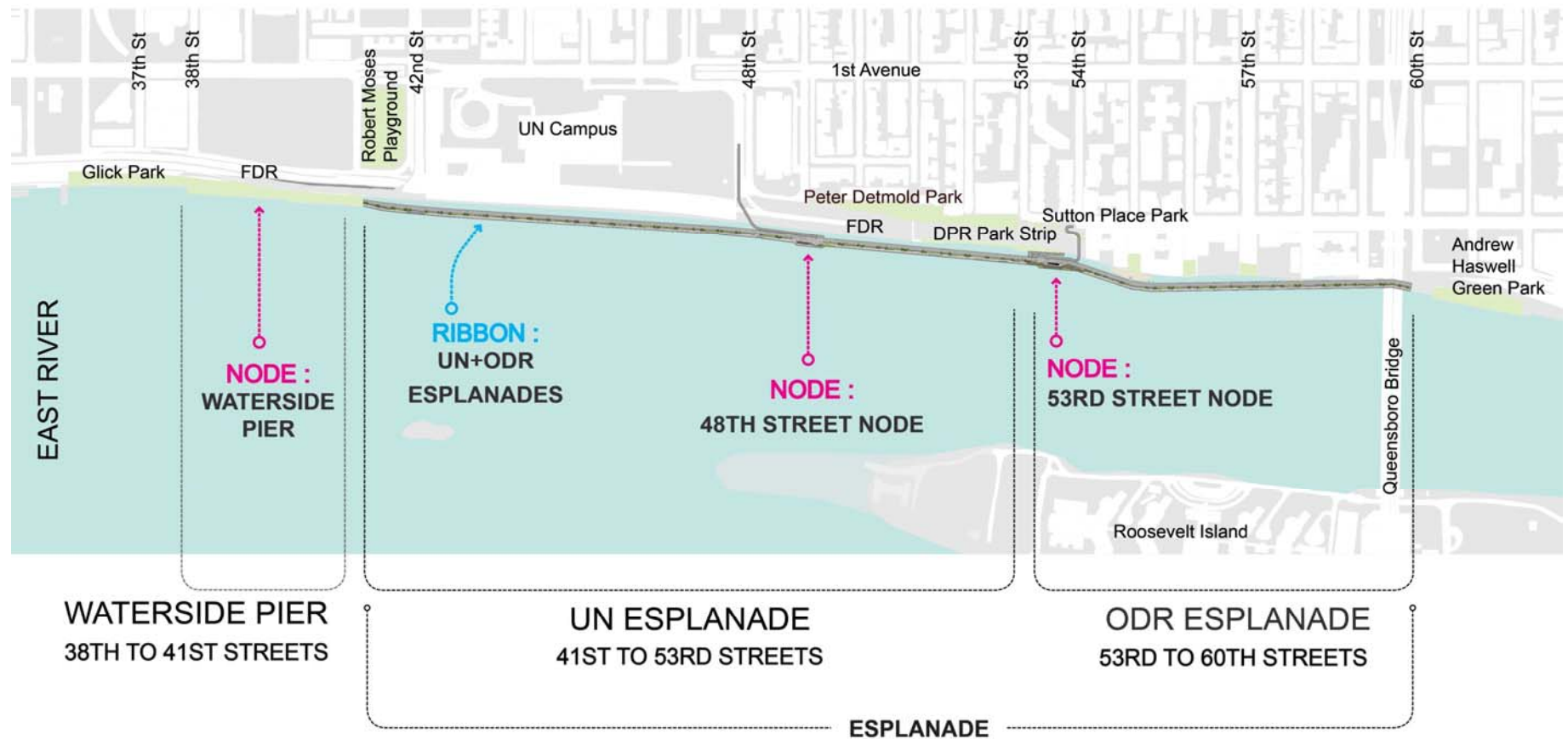


Asser Levy Park



Waterside Pier

Design Framework



Programming Focused on the Nodes

The esplanade was envisioned for biking, walking, seating, and planting, while the nodes each had a programmatic focus



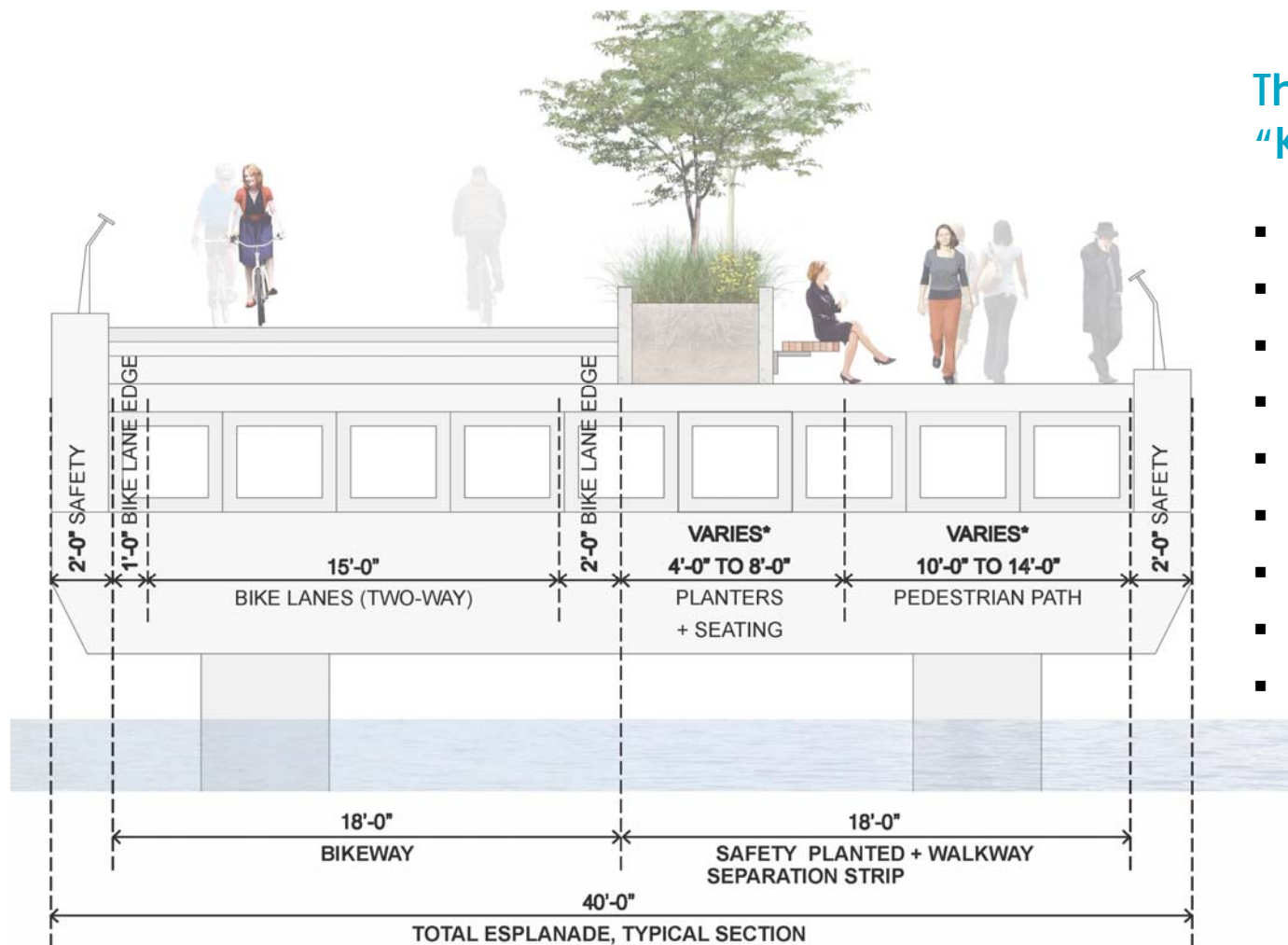
Waterside Pier:
Active Uses
 e.g. performance spaces,
 play equipment, games

48th Street Node:
Gatherings
 e.g. seating, tables, games,
 performance space,
 concessions

53rd Street Node:
Environmental Education
 e.g. fishing, educational
 installations and programming

Typical Section

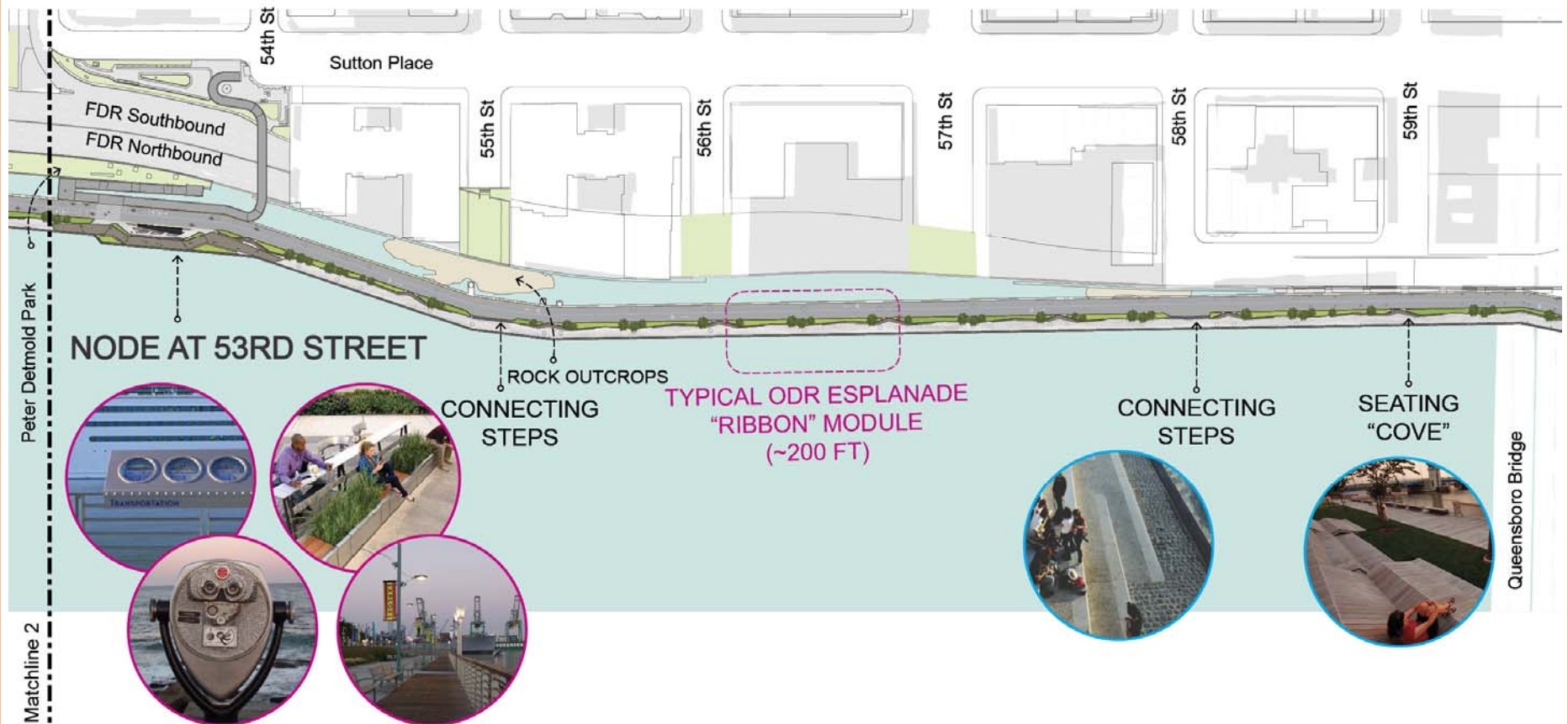
Interagency discussions resulted in a 40' width accommodating a two-way bike lane, planters and seating, and a pedestrian path



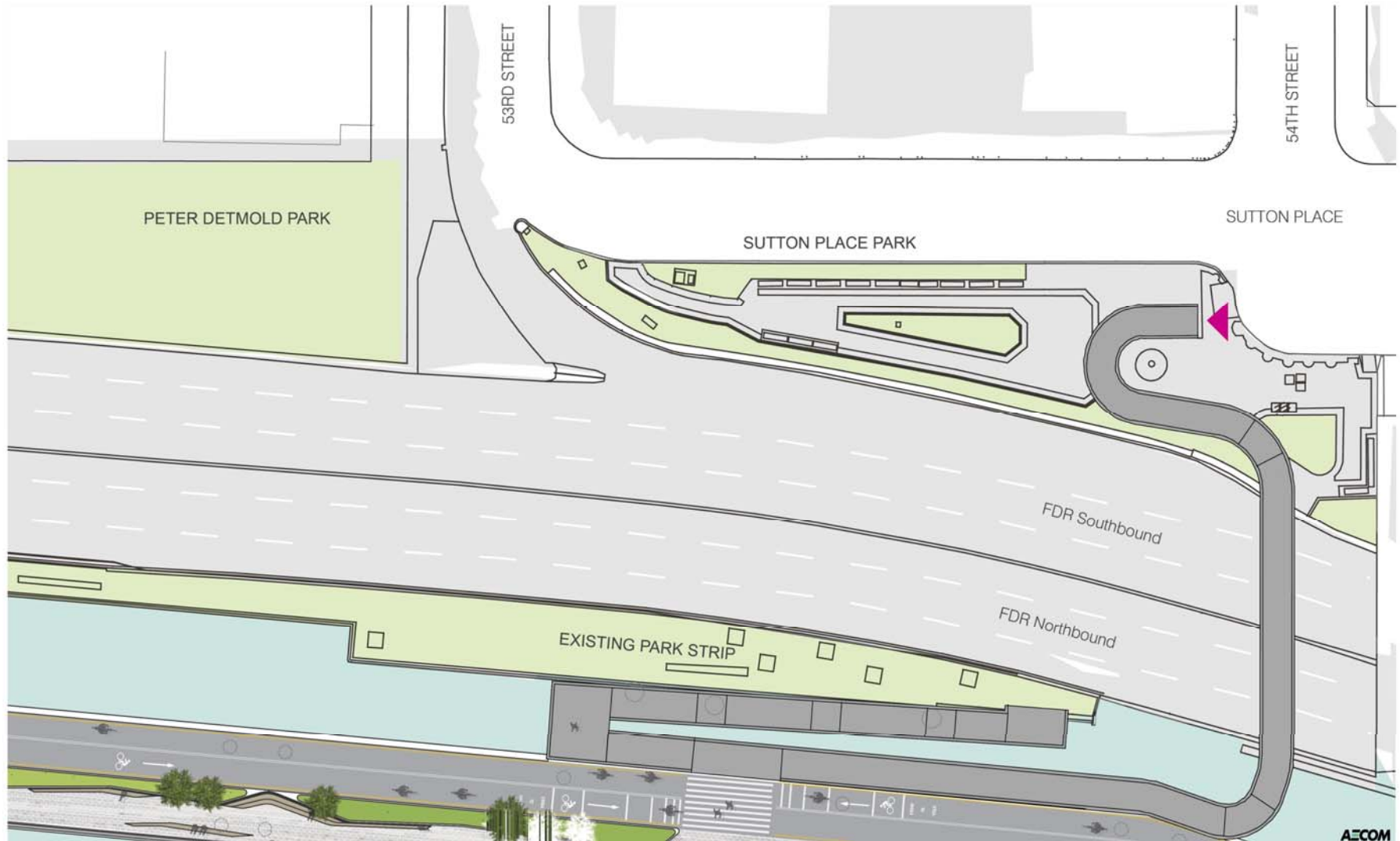
The Ribbon "Kit of Parts"

- Wall
- Seatwall
- Bench
- Planters
- Steps + Ramps
- Bike Racks
- Trash Receptacles
- "Push Down" Walk
- See-Through Deck

ODR Esplanade



54th Street Upland Connection

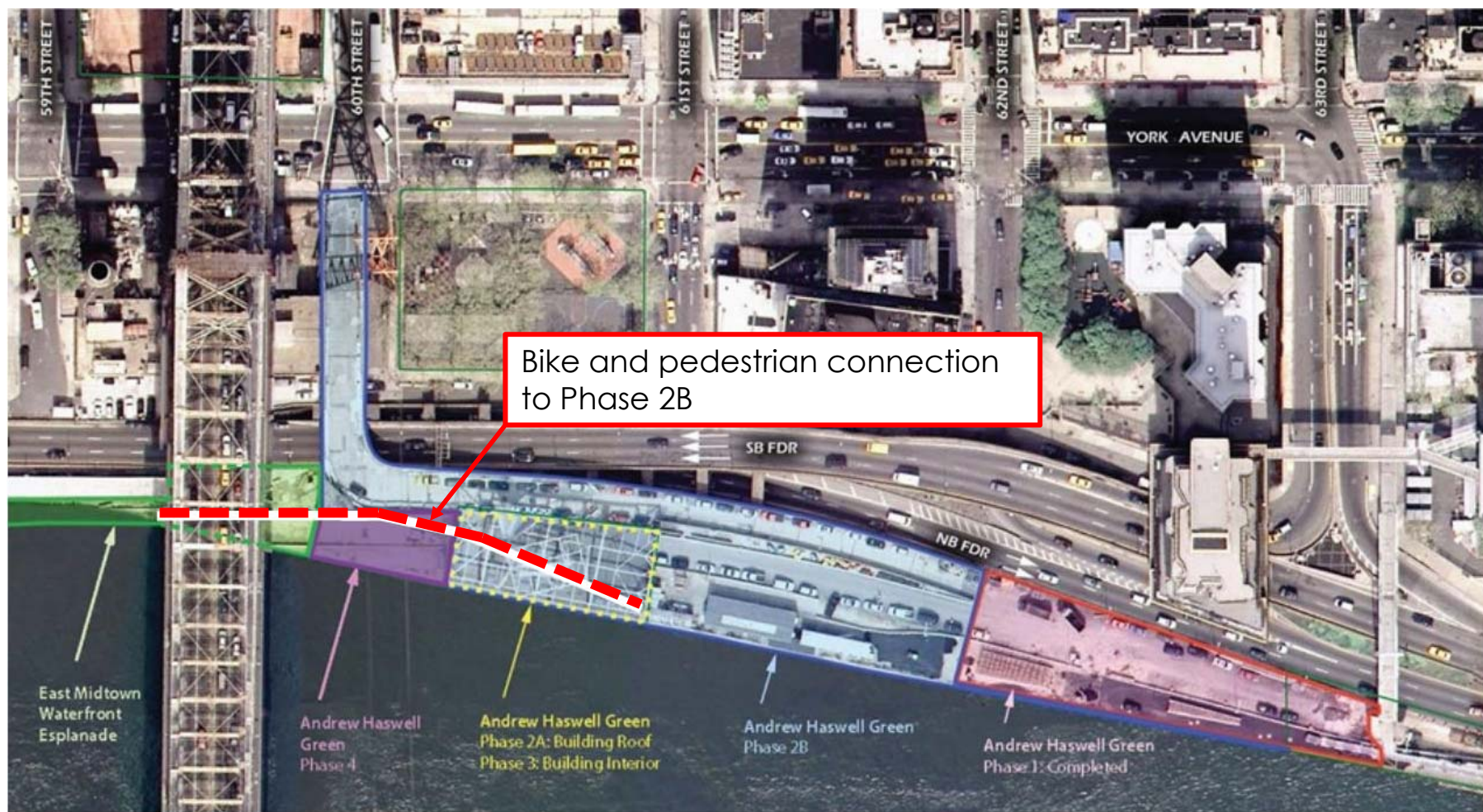


AECOM

ODR Esplanade Looking South



Connection at Andrew Haswell Green Park




City of New York Parks & Recreation

Andrew Haswell Green Park
 East 60th Street and FDR / Manhattan

Phasing Plan

Current Project and Next Steps

In April 2017, the City committed \$100M to close the gap between E 53rd & E 61st Streets

- Recent activity
 - Summer 2017 released RFP for designers, Stantec selected
 - October 2017 Design kick-off
 - Currently conducting site investigations and establishing design criteria with city agencies
 - Developed plan for community engagement on design and art



53rd Street Node looking north



ODR and UN esplanades from Sutton Place looking south

Schedule Milestones and Community Engagement

- Public art to be integrated with overall design (details following)
- CB 6 and 8 to be engaged throughout for artist selection, Schematic Design, Preliminary Design and Final Design

Milestone	Anticipated Date
Artist selection	March 2018
Schematic Greenway and Bridge Design	Spring 2018
Preliminary (30%) Greenway and Bridge Design	Summer 2018
Final (90%) Greenway and Bridge Design	Winter 2019



East Midtown Greenway

Land Use and Waterfronts Committee Presentation

November 27, 2017



Artist Selection – Past Work

Via Partnership works with public and private sector organizations to develop and implement public art strategies.



Past Work - The Moons, Chris Doyle (Kansas City)



Past Work: Forest Lawn Lift Station, Sans Facon (Calgary)



Past Work - Sidewalk Poems, John Runnels (Frisco)



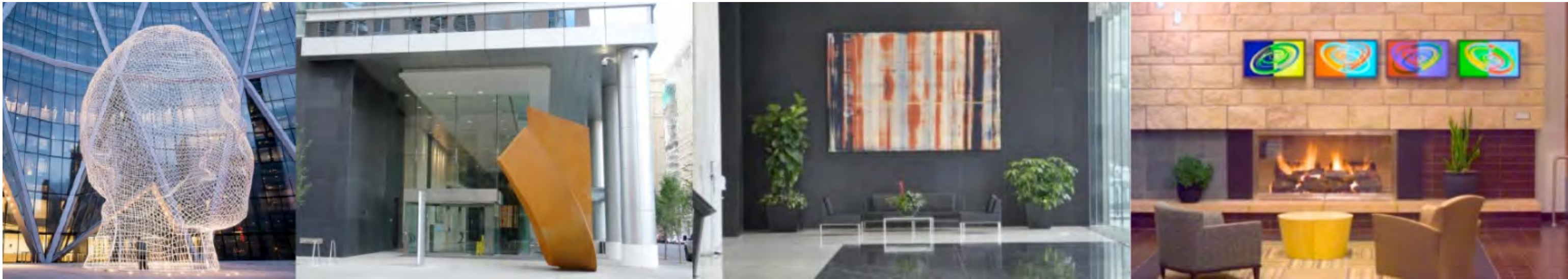
Past Work - Slipstream, William LaChance (St. Louis)



Past Work - MetroLink Design, Leila Daw, Gary Burnley, Jody Pinto, Anna Valentina Murch, Michael Jantzen and Alice Adams (St. Louis)



Artist Selection – Process



Artist Selection - Approach

Invitational Competition

- Local, Regional, National and International artists

Artists Recommended for Invitation by:

- Community Boards and local elected officials
- Artist Selection Committee
- Design Team/Public Art Consultant
- Stakeholders – EDC, DPR, DOT

Public Art Goals

- Be **integrated** into the design with a desire for functionality, in support of the interpretation and/or programming of the site.
- Reflect the complexity, scale and significance of this project, which provides **new public access** to the East River.
- Give significant consideration to the **natural environment and community context**.
- Encourage **thoughtful engagement** and remain compelling to repeat visitors, as the Greenway will be open 365 days a year.
- Be sensitive to and supportive of the **many uses** of the space.

Artist's Selection Participants

- Artist Selection Committee
- Advisory Panel
- Public Participation

Selection Committee

(1) Design Agency (EDC)

(1) Sponsor Agency (DPR)

(1) Department of Cultural Affairs

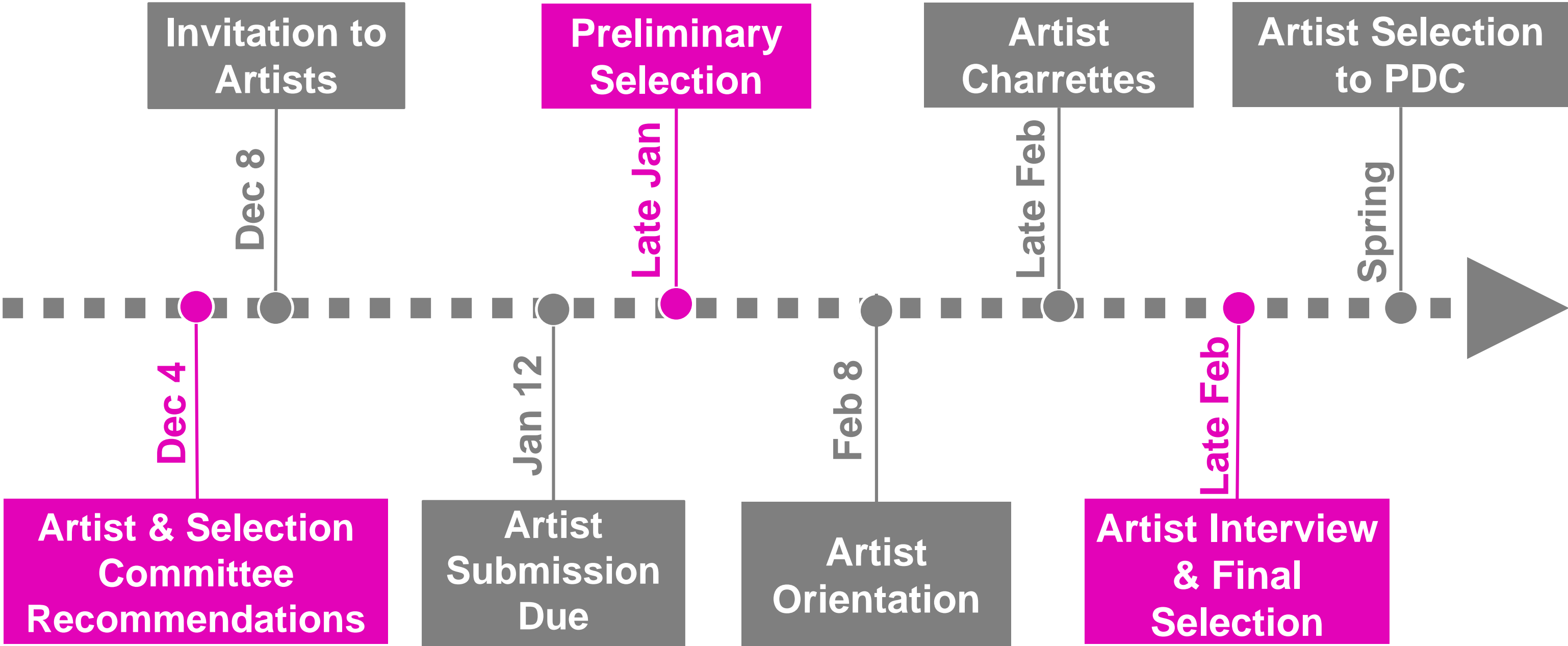
(4) Outside Art Professionals with:

- Visual Art expertise
- Knowledge of living artists and artistic production
- Ability to represent the community
- Support for project vision

Advisory Panelists

- Design Team
- Representatives of local elected officials

Selection Timeline



Preliminary Selection

Review of qualifying submissions

Selection Criteria:

- Technical expertise and demonstrated collaborative skills.
- Past experience and sensitivity to working on public space projects.
- Ability to make public space more vibrant and engage a diverse audience.

Results in Selection of 3 Finalists and 2 Alternates

Orientation

- Joint session will include (3) finalists
- Review project scope and goals
- Site Walkthrough

Charrettes

- Individual sessions with each Artist
- Collaboration with design team
- Begin to review and evaluate Artist ideas

Final Selection

Artist Finalists presentations and interviews

Selection Criteria:

- General Presentation
- Collaborative Approach
- Technical Skills and Methodology
- Past Work

Results in Artist Selection

Summary of Public Participation

1. Recommendations for:

- Artist Invitation List
- Artist Selection Committee
Visual Arts Representatives
- **Due December 4th**

2. Preliminary Selection (Late January)

3. Finalists Presentations and Interviews (Late February)

Project Schedule

<u>Task</u>	<u>Date</u>
Invitation to Artists	December 8, 2017
Artist Submissions Due	January 12, 2018
Preliminary Selection	Late January, 2018
Artist Orientation	February 8, 2018
Artist Charrette	Late February, 2018
Artist Presentation and Interviews	Late February, 2018
Artist Selection and Conceptual Design	Spring 2018
Preliminary Design*	Summer 2018
Detailed Design*	Winter 2019
EMG Construction Start	2019
EMG Construction Completion	2022

*Review with CB6 and CB8

EMidtownGreenway@stantec.com

Include:

- ❖ Artist or Committee Member Name
- ❖ Contact information (phone / email)

Submit by:

Monday, December 4th