



# East Midtown Waterfront Esplanade

Community Working Group

June 24, 2013



New York City Economic Development Corporation



NYC Parks



# Agenda

---

## **I. Project Overview**

- a) Project Goals**
- b) Project Considerations**
- c) Progress Update**

## **II. Pre-Concept Design**

- a) Design Inspiration**
- b) Community Working Group 1 Meeting Summary**
- c) Responding to Community Aspirations**

## **III. Breakout Session**

## **IV. Reporting Back**

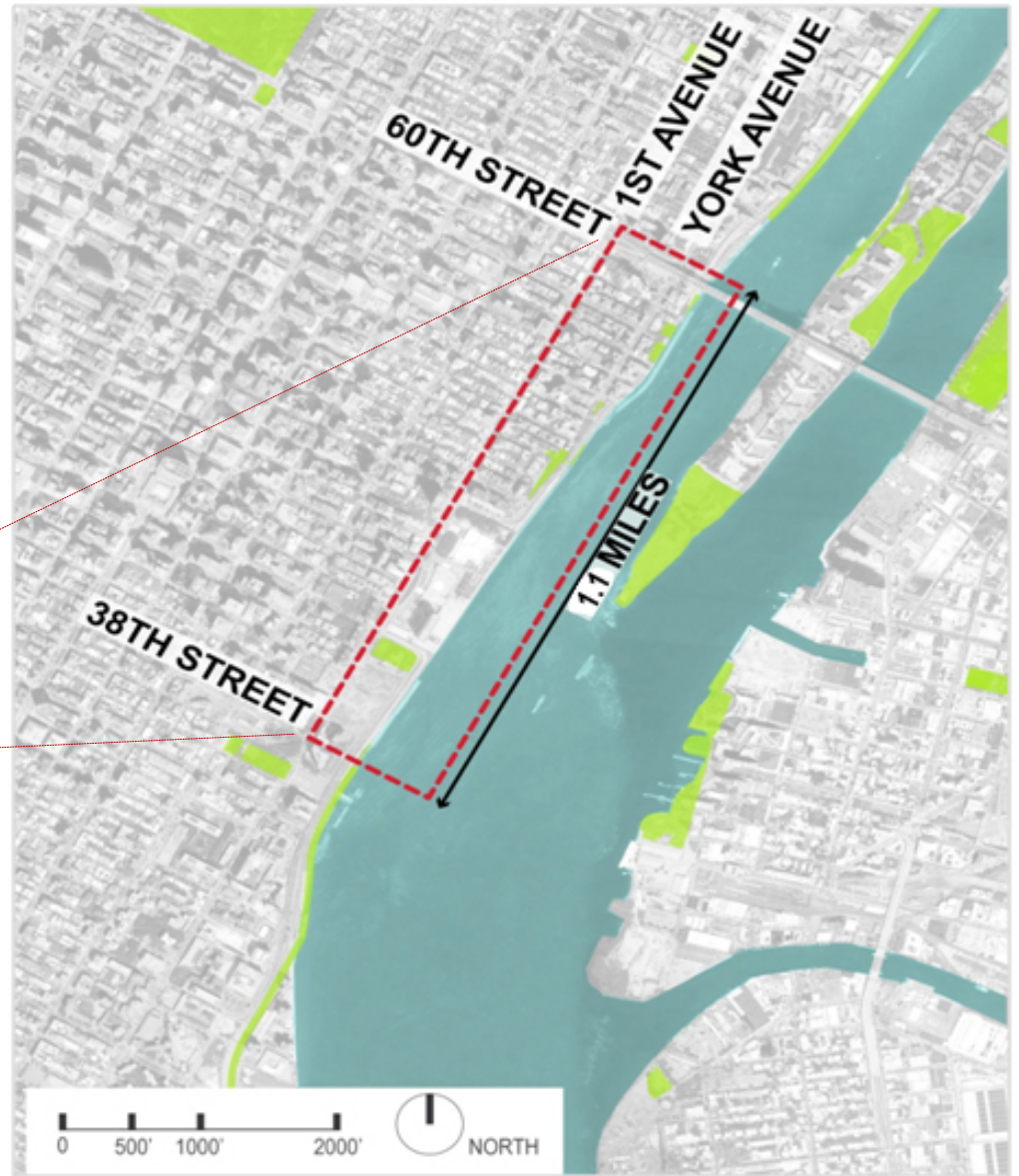
## **V. Project Timeline and Next Steps**





# Project Overview

# Site Context



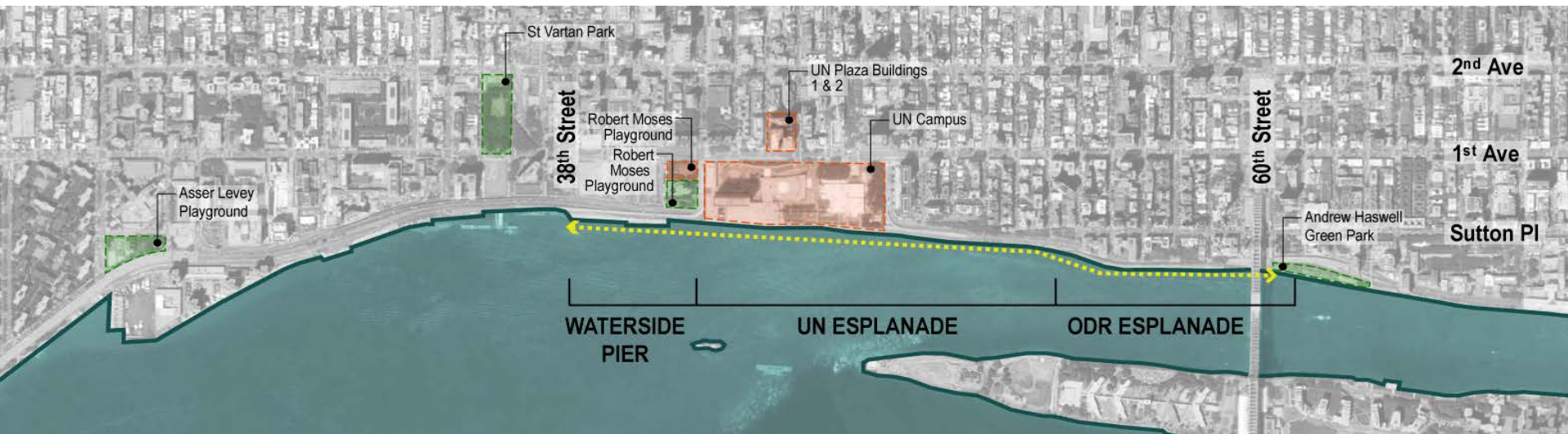
# Project Overview

## Contemplated by State legislation in July 2011:

- Sponsored by State Assemblymember Brian Kavanaugh and State Senator Liz Krueger (locally by Councilmember Daniel Garodnick)

## Project purpose:

- Construct a continuous greenway from East 38th – 60th Street along the East River to create a critical transportation connection and to provide new open space to alleviate chronic shortage in the immediate area



# **Project Goals**

# Provide Critical Transportation Route

Achieve major transportation need and policy goal by filling critical gap

- East Side of Manhattan lacks dedicated greenway for non-motorized transportation; creating one is a major public policy goal
- Improve transportation options for thousands of pedestrians, joggers, rollerbladers and cyclists
- Support alternative forms of transportation for New Yorkers and improve air quality



Bicyclist on 2<sup>nd</sup> Ave & 38<sup>th</sup> Street



NYC Bike Map in 2016

# Provide Waterfront Access & Open Space

Provide waterfront access and new open space for densely populated East Midtown communities

- Rare opportunity to create new open space
- CD 6 has least parkland of any community district
- Just over 1-mile stretch with virtually no public waterfront access, adjacent to Midtown and tourist destinations



View south from pedestrian bridge at 51<sup>st</sup> St



# Create Safe Spaces for Wide Range of Users

**Provide safe recreation areas for wide range of users, including children, the disabled and elderly**

- Provide accessible areas for gathering, programming and play
- Recreation and rest areas for people of all ages and abilities
- New upland connections and esplanade will meet ADA requirements



*Riverside Park South*



*Hudson River Greenway*



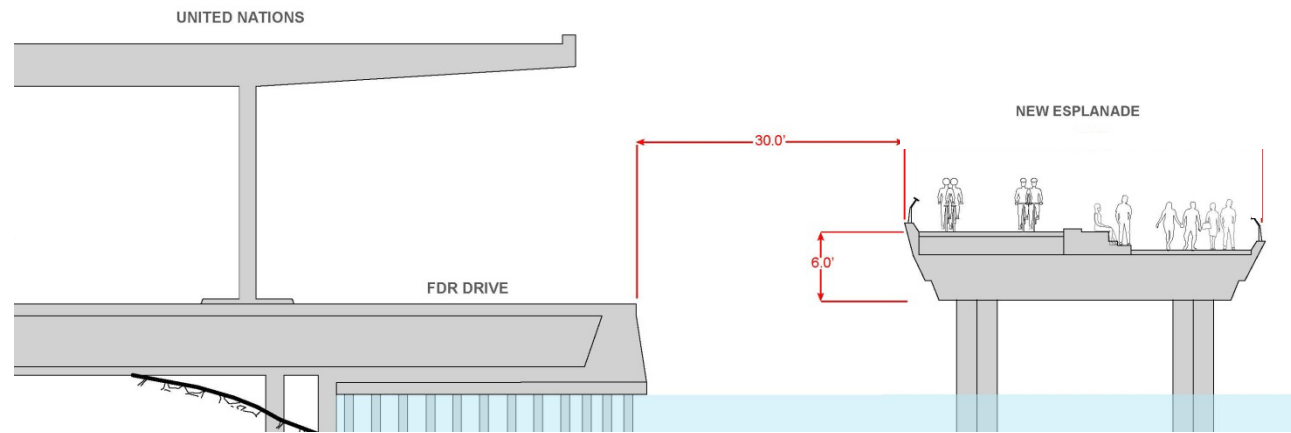
*Williamsburg Waterfront*



*Hudson River Greenway*

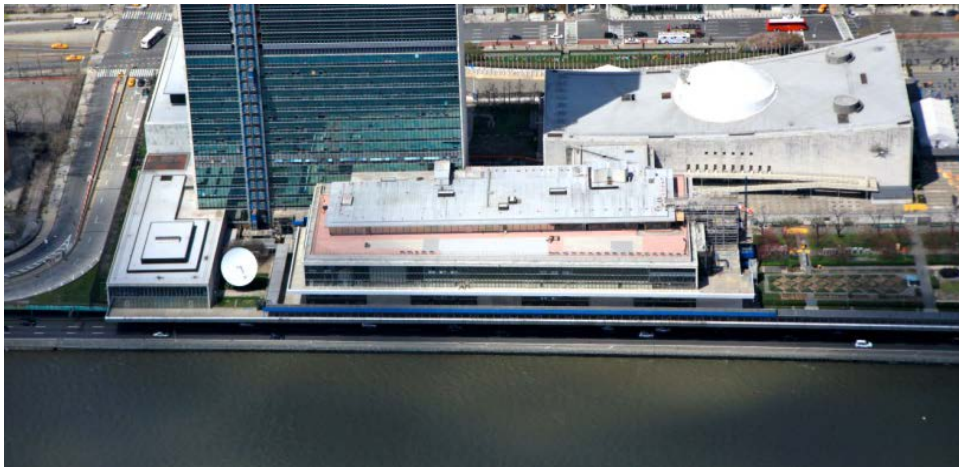
# Re-Use Existing Waterfront Infrastructure

- Reuse western row of caissons remaining from the former temporary FDR Drive Outboard Detour Roadway
- Allows for 10 to 30-ft offset between esplanade and FDR Drive
  - Reduces traffic noise and air effects on esplanade users from the FDR Drive traffic
  - Provide access for maintenance and repair of the bulkhead
  - Minimize potential impacts on aquatic habitat



# Improve Security & Emergency Access

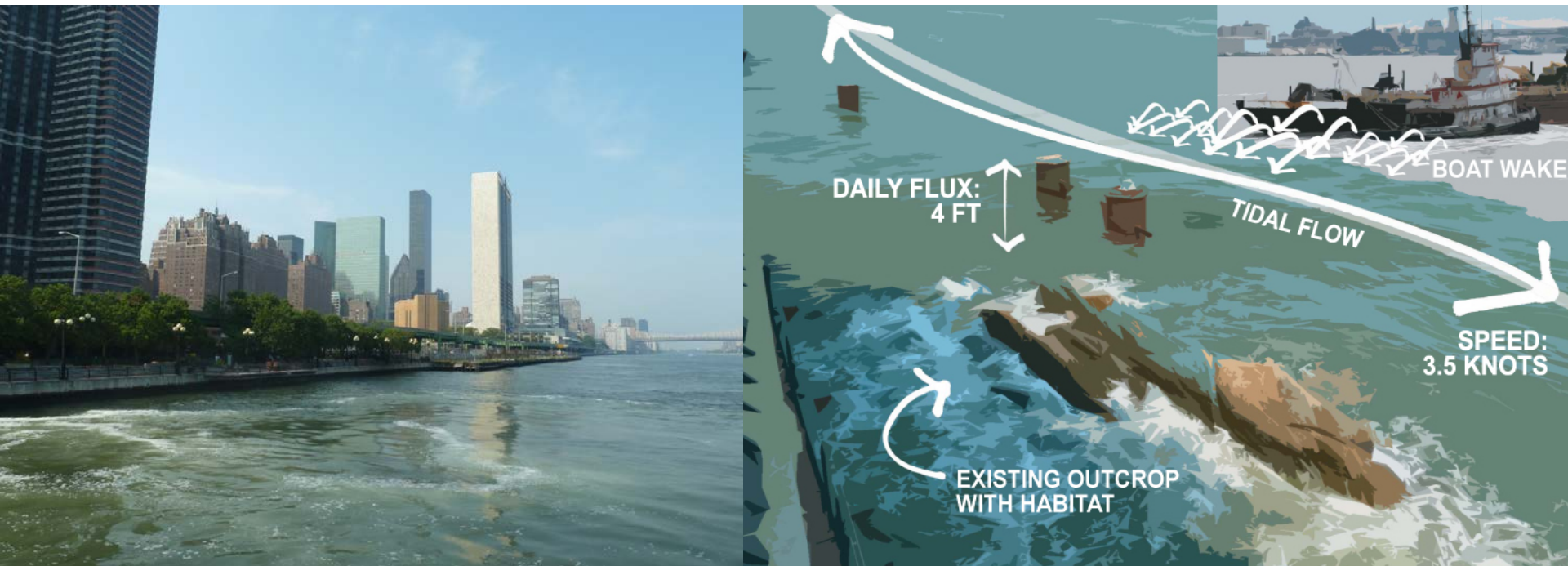
- Increase ability to provide access for water-related emergencies
- Build ladders and swing hooks into esplanade structure for in-water rescues
- Facilitate water evacuation during major emergency



# **Project Considerations**

# Withstand East River Conditions

- Currents in this section of East River are strong and can be hazardous
  - Water level rises and falls considerably due to tides and boat wakes
  - Dangerous currents impose limits to potential water dependent uses
- Substantial existing infrastructure present (i.e. utility, subway, sewer)
- Narrow Federal Channel adjacent to Roosevelt Island



# Endure Sea Level Rise & Major Storms

- Structure will be designed for 75 year minimum service life.
  - Base of esplanade will be two feet above projected MHW line, well above the current and projected 100-year flood elevation
  - 6 to 8-ft above the FDR drive elevation
- Structure will be designed to withstand storm condition loads (waves, wind, seismic)



# Work Within Permitting Requirements

- Submitting permit applications to NYS Department of Environmental Conservation, US Army Corps, and US Coast Guard this year
- NYS Department of Environmental Conservation seeks to limit the coverage of new in-water structures



*Construction of Outboard Detour Roadway (ODR)*



*Construction of Pier 15, East River Waterfront Esplanade Phase I*

# **Project Progress Update**



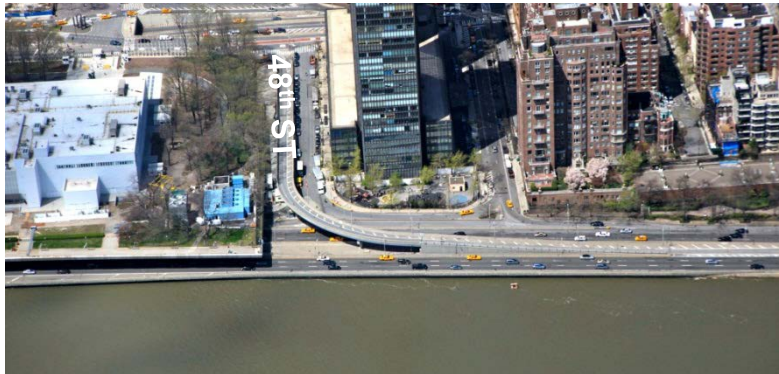
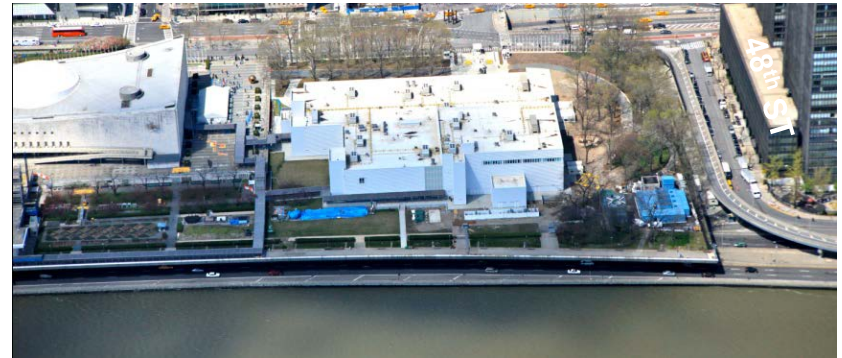
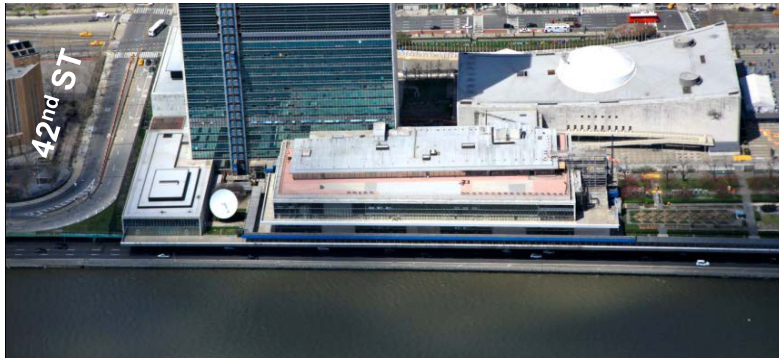
# Waterside Pier (38<sup>th</sup> -41<sup>st</sup> Street)

- Connects to Glick Park to the south and the existing 37th Street upland connection
- 0.8 acres, extends approx. 50-ft into East River
- Formerly used by Con Ed for fuel deliveries and parking
- Environmental review completed and permit approvals obtained
- Construction anticipated to begin on sub-structure by end of 2013



# UN Esplanade (41<sup>st</sup> -53<sup>th</sup> Street)

- Connection to Waterside Pier to the south and the proposed ODR Esplanade at 53rd Street
- Submission of permit applications to NYS Department of Environmental Conservation, US Army Corps, and US Coast Guard anticipated by end of 2013
- Expect to proceed with construction in 2020; contingent on refinancing/sale of UN Plaza Buildings 1 and 2



# ODR Esplanade (53<sup>rd</sup> - 60<sup>th</sup> Street)

- Connection to Andrew Haswell Green and existing upland connection at 60<sup>th</sup> Street
- Connection to existing esplanade (51<sup>st</sup> – 54<sup>th</sup> Street)
- Reuse caissons from former Outboard Detour Roadway
- Submission of permit applications to NYS Department of Environmental Conservation, US Army Corps, and US Coast Guard anticipated by end of 2013
- Anticipate commencing construction in 2016; contingent on advancement of UN Consolidation Building





**II**

**Pre-Concept Design**

# Work Session Goals

---

- ✓ Present **pre-concept design**
- ✓ Collect **your input** on progress-to-date work
- ✓ Confirm **next steps** for your involvement and the project overall

# Today's Presentation

---

## *Pre-Concept Design...*

- *Illustrates **progress to date**, including:*
  - *Agreed-upon and technically-tested **access + connectivity** proposals*
  - *Initial “test fit” for **configuration of program** and features*
  - *Preliminary suggestions for esplanade’s potential “**look and feel**”*

***Your input today is critical to help us develop a final conceptual design***

# **Design Inspiration**

# Completing the Missing Link





# PHYSICAL Inspiration

East River



City Connections



Existing Structures



Existing Materials (hardscape + softscape)

1782

1865

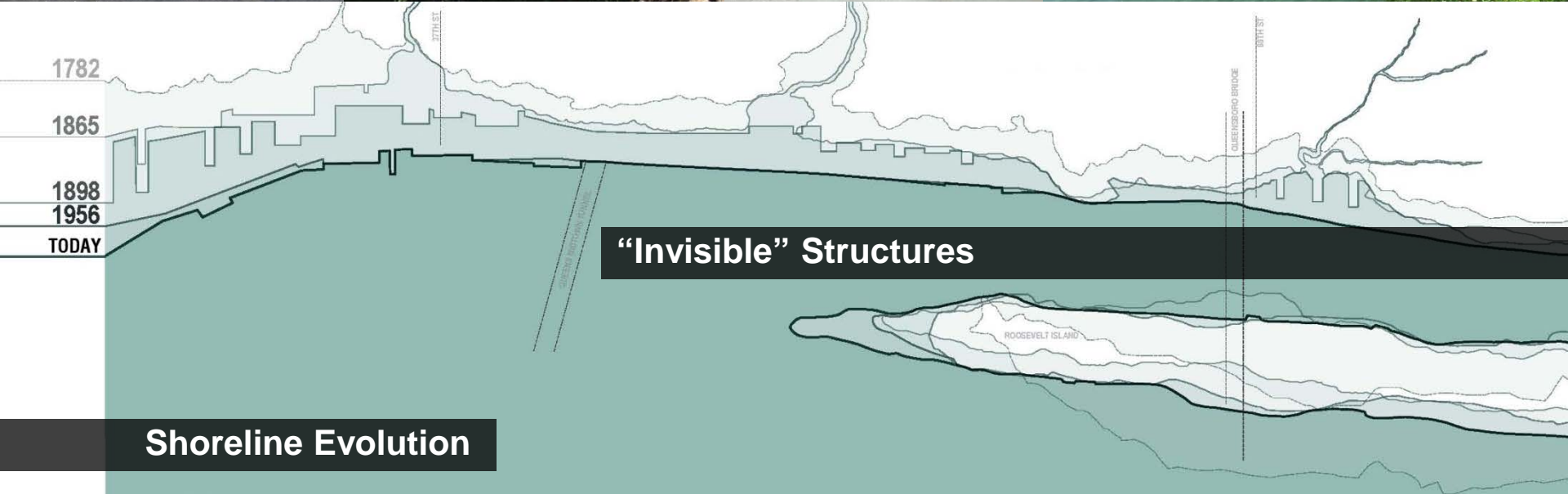
1898

1956

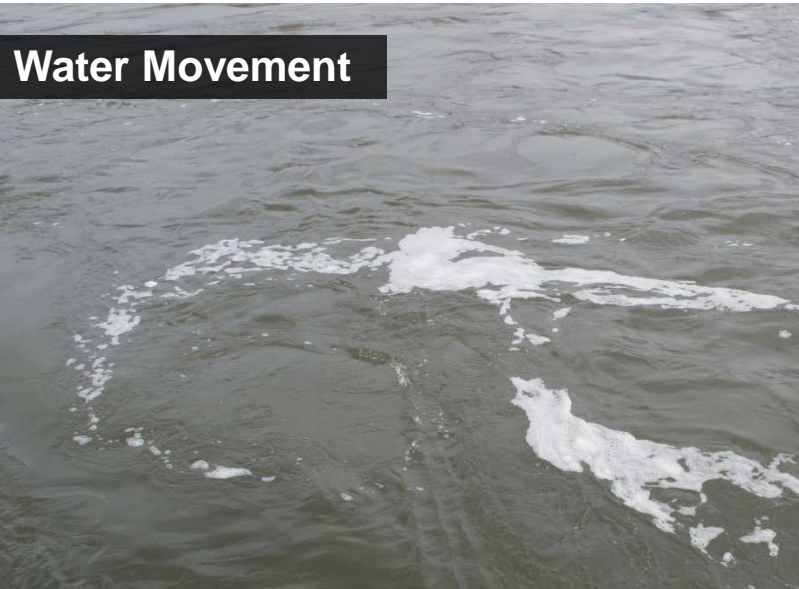
TODAY

“Invisible” Structures

Shoreline Evolution



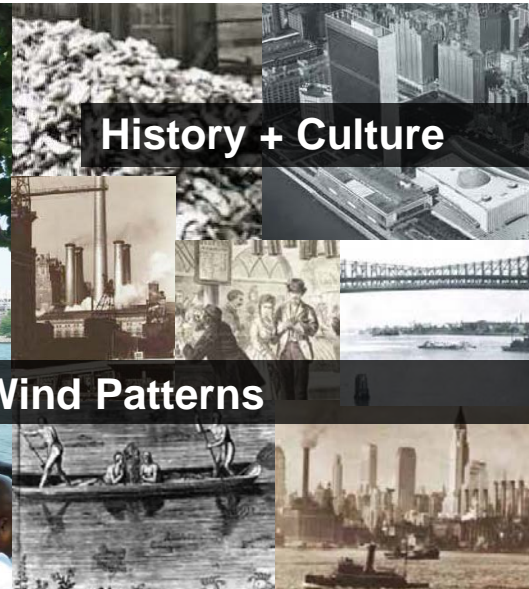
# EXPERIENTIAL Inspiration



**Water Movement**



**Sun + Shade + Wind Patterns**



**History + Culture**

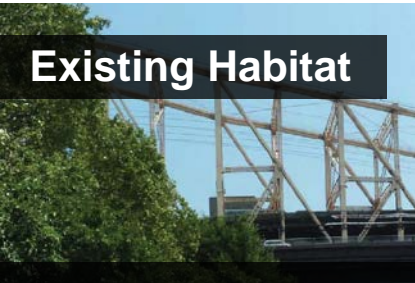


**Dramatic Views**

**Navigation Patterns**

**Shoreline Evolution**

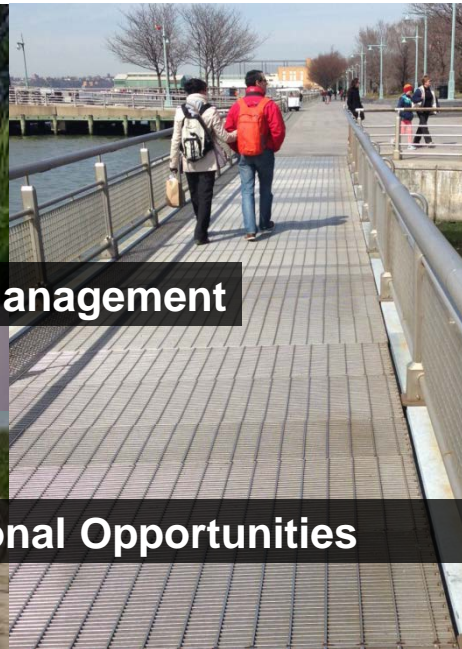
# PERFORMANCE Inspiration



Existing Habitat



Stormwater Management



Educational Opportunities



Infrastructure Reuse



River Dynamics

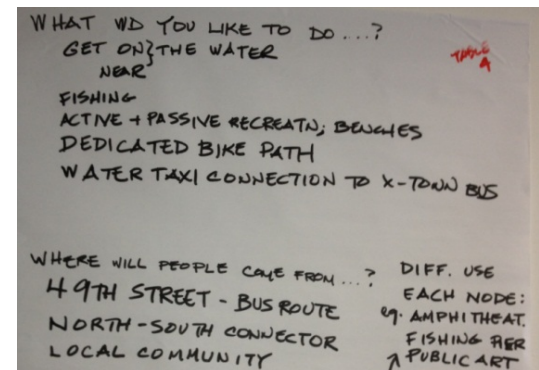


# **Community Working Group Meeting 1**

MAY 21, 2012

# Community Working Group Meeting 1

- **Community Working Group:**
  - Community Boards 6 and 8
  - 15 Neighborhood and tenant associations
  - 7 Citywide organizations
- **Questions Asked:**
  - What would you like to do on the East Midtown Waterfront Esplanade?
  - Where will people be coming from? Where will they need to get on and off?
  - What are the top 3 features you would like to see on the esplanade?
- **Themes:**
  - *Connections; Movement; Activities; Public Space*



# Aspirations DEFINITIONS

## ■ CONNECTIONS

- Access Points
- Circulation To/From The City



## ■ MOVEMENT

- Circulation Within Esplanade
- Physical Dimensions



## ■ ACTIVITIES

- Outdoor Program
- Activity Nodes/Synergies



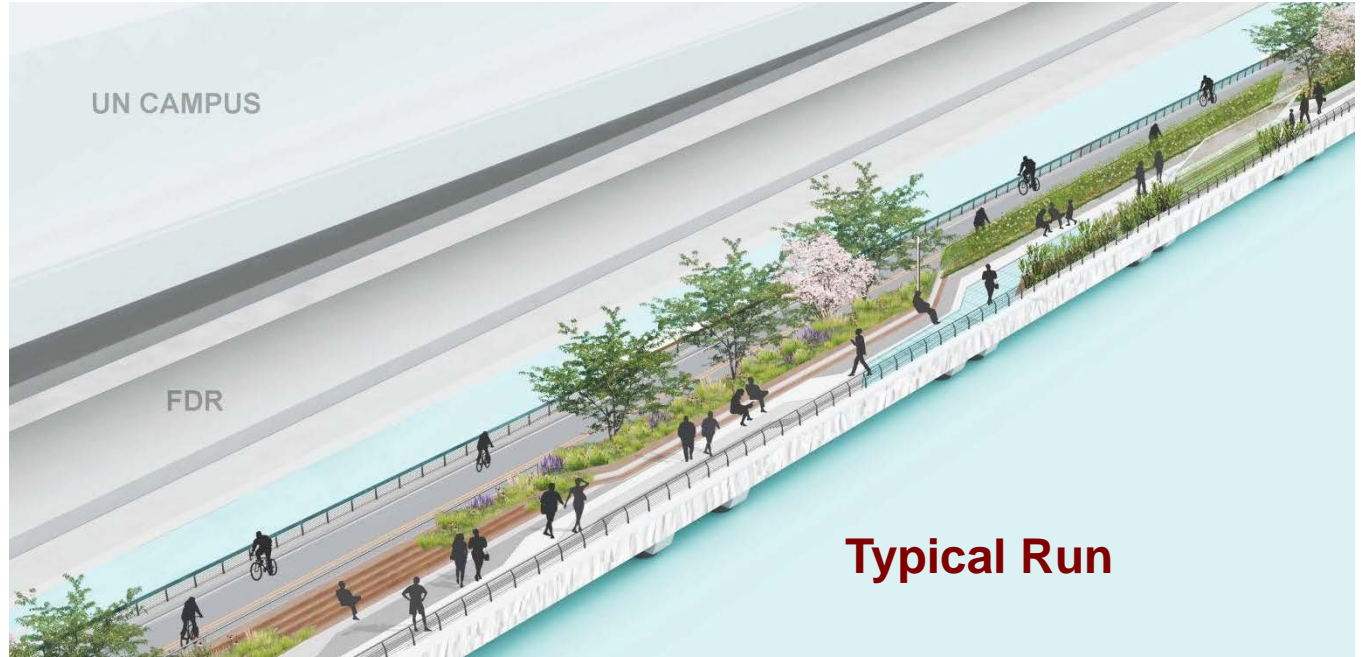
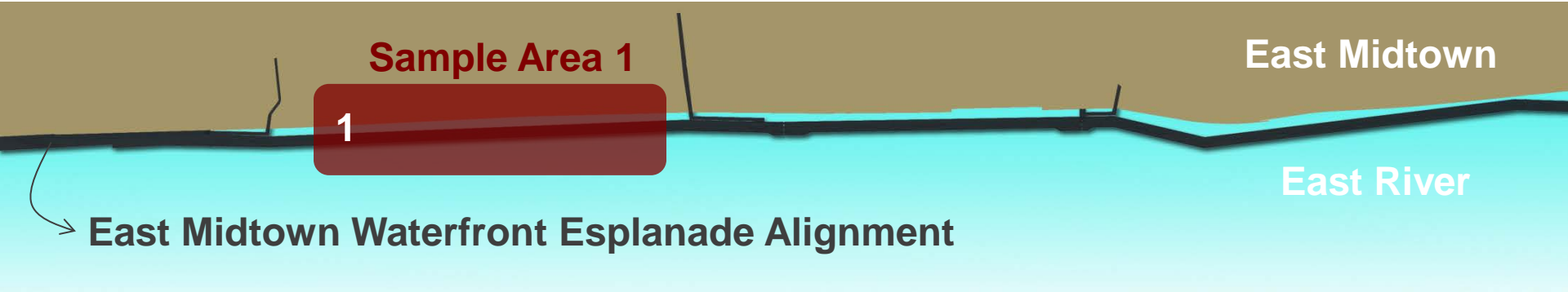
## ■ PLACE-MAKING

- Character
- Signature Features



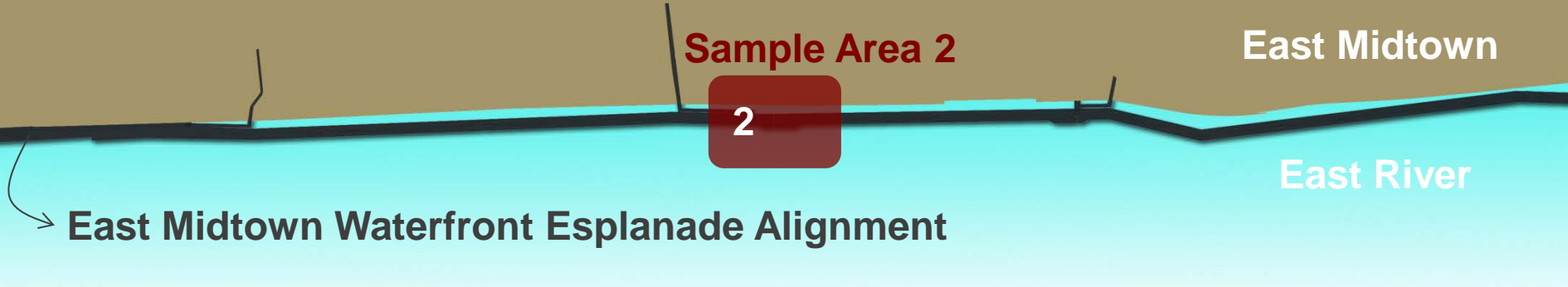
# **Responding to Community Aspirations**

# Pre-Concept Design





# Pre-Concept Design



# Pre-Concept Design



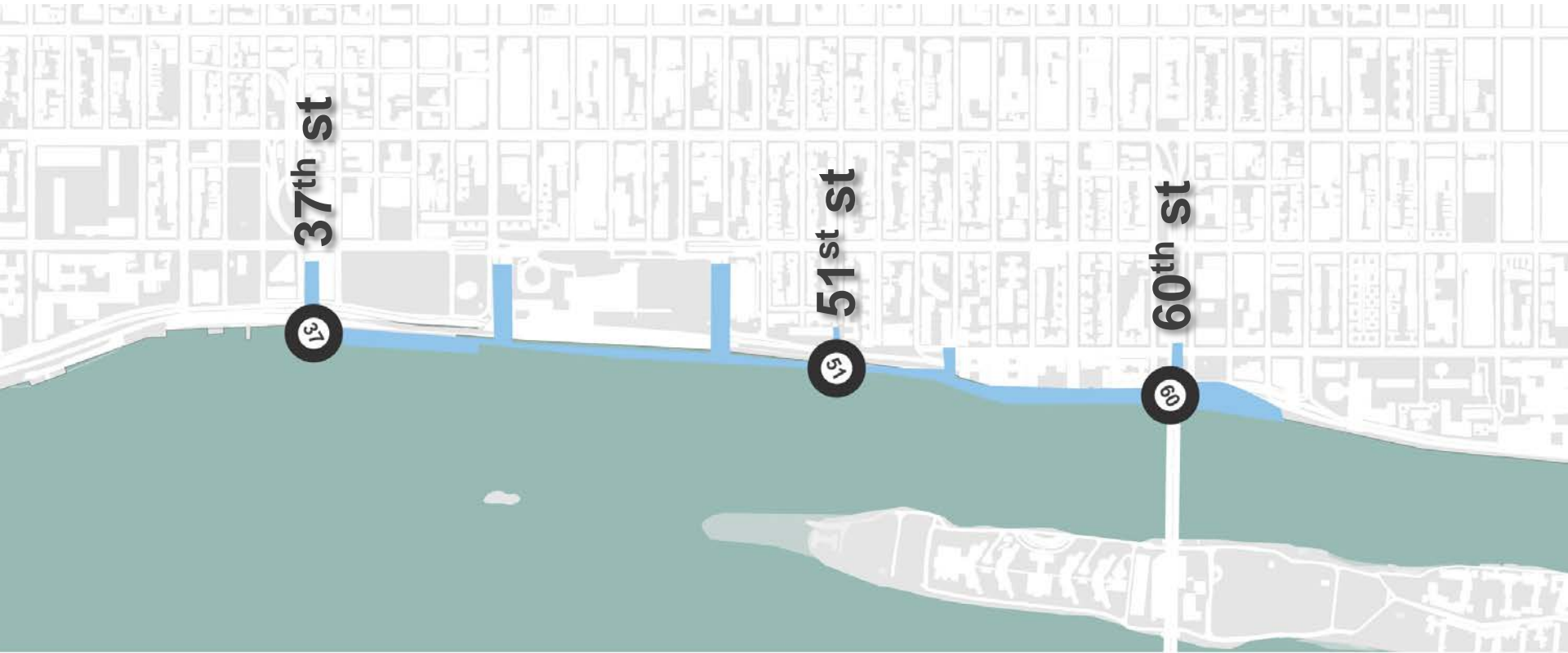
# Aspirations SUMMARY

---

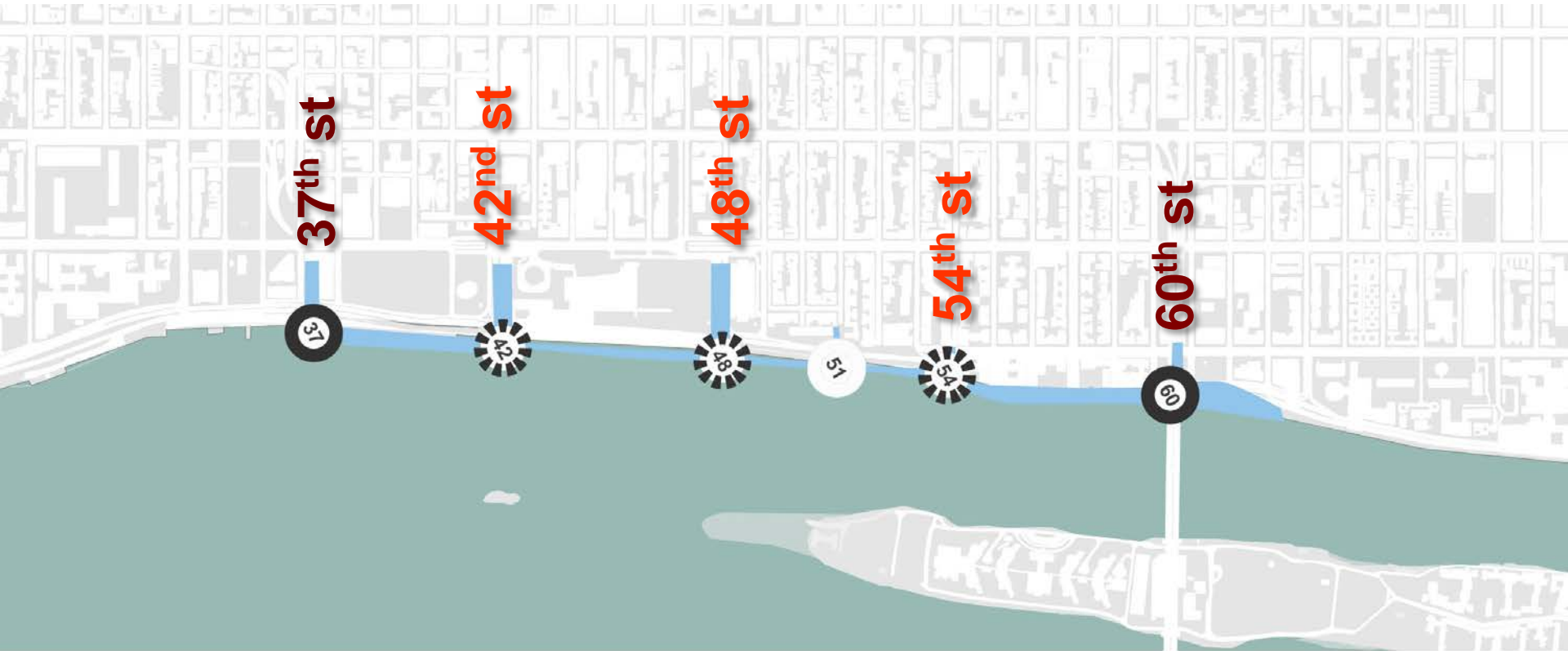
## Connections

- *Provide **multiple points of access** (about every 4 to 6 blocks)*
- *Maintain **universal access***





## Existing Connections



## Analyzed Existing and Potential Connections

(Visibility, Accessibility, Adjacencies, Connection To Existing Networks)

## Determined Potential Connections

# Aspirations SUMMARY

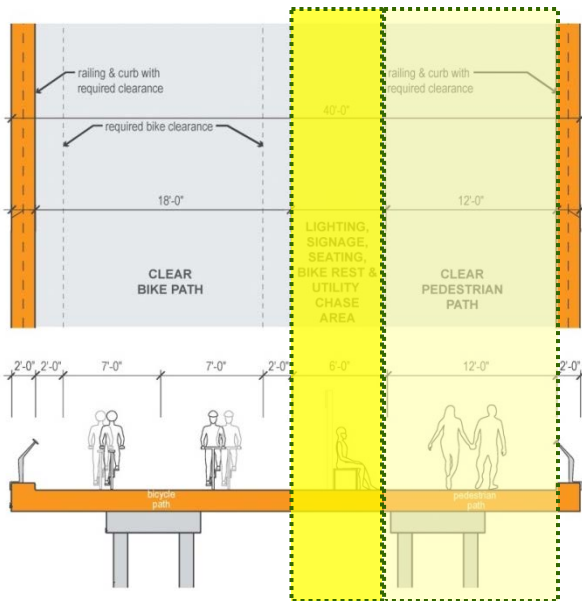
---

## Movement

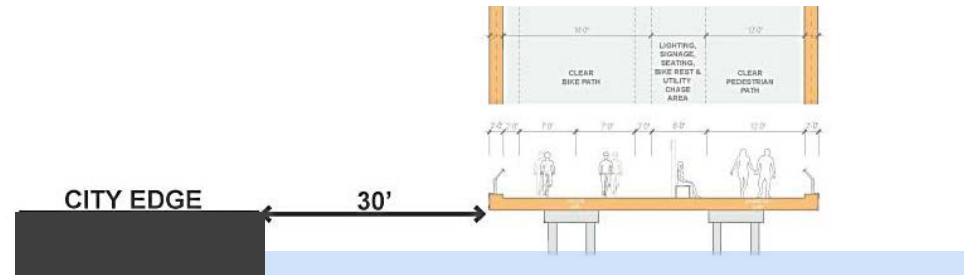
- Provide *separate bike and pedestrian lanes/zones*
- Organize spaces into *distinct zones* (moving vs. stopping)
- Concentrate active uses at “*nodes*” around access points
- Provide clear *wayfinding* system (signage, icons, open viewsheds)



## Design Process



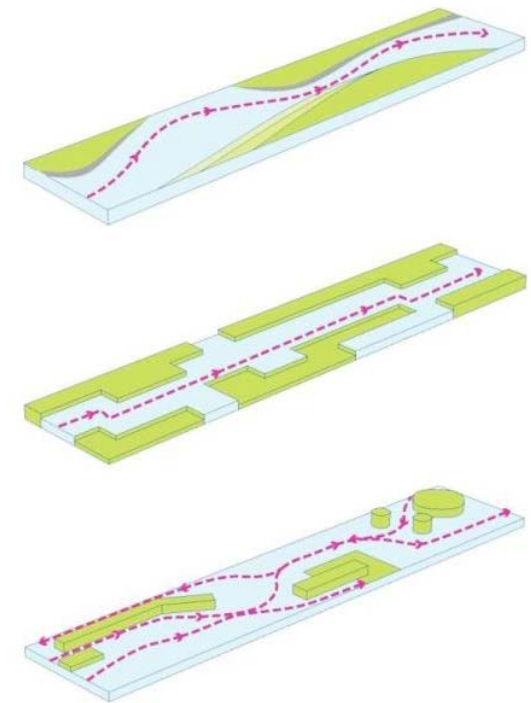
### 1 Basic Dimensions

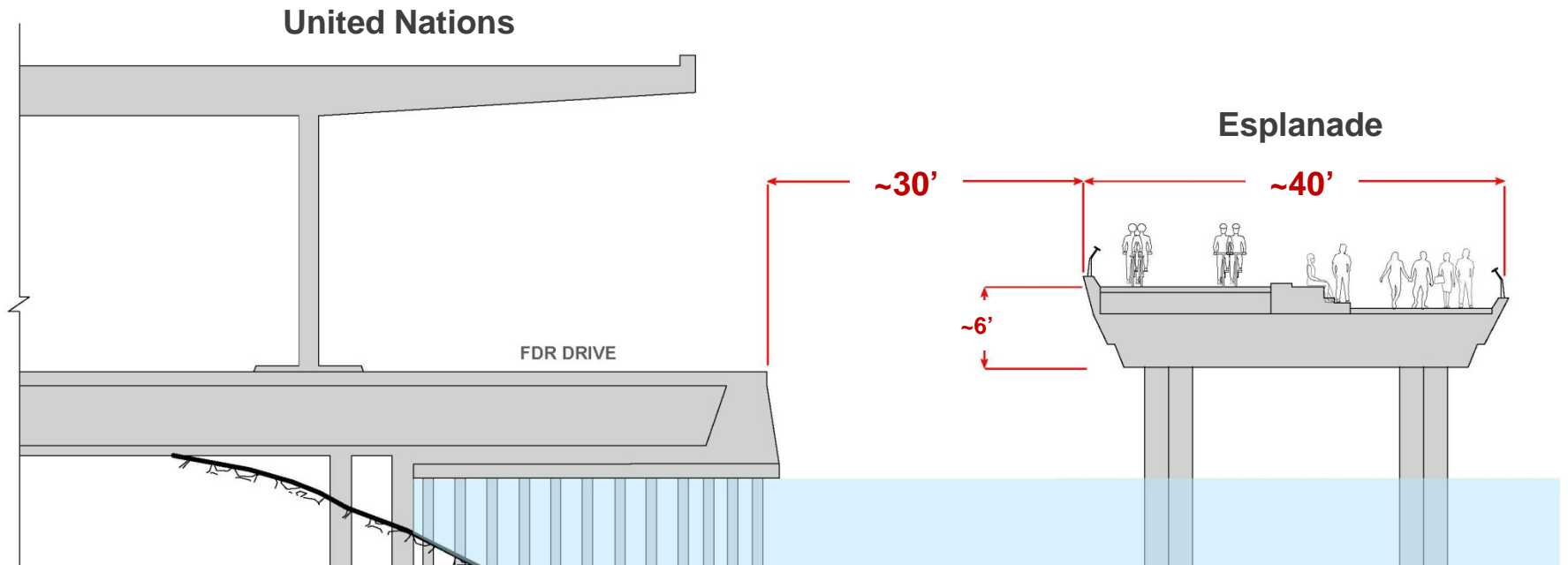


### 2 Location at Waterfront



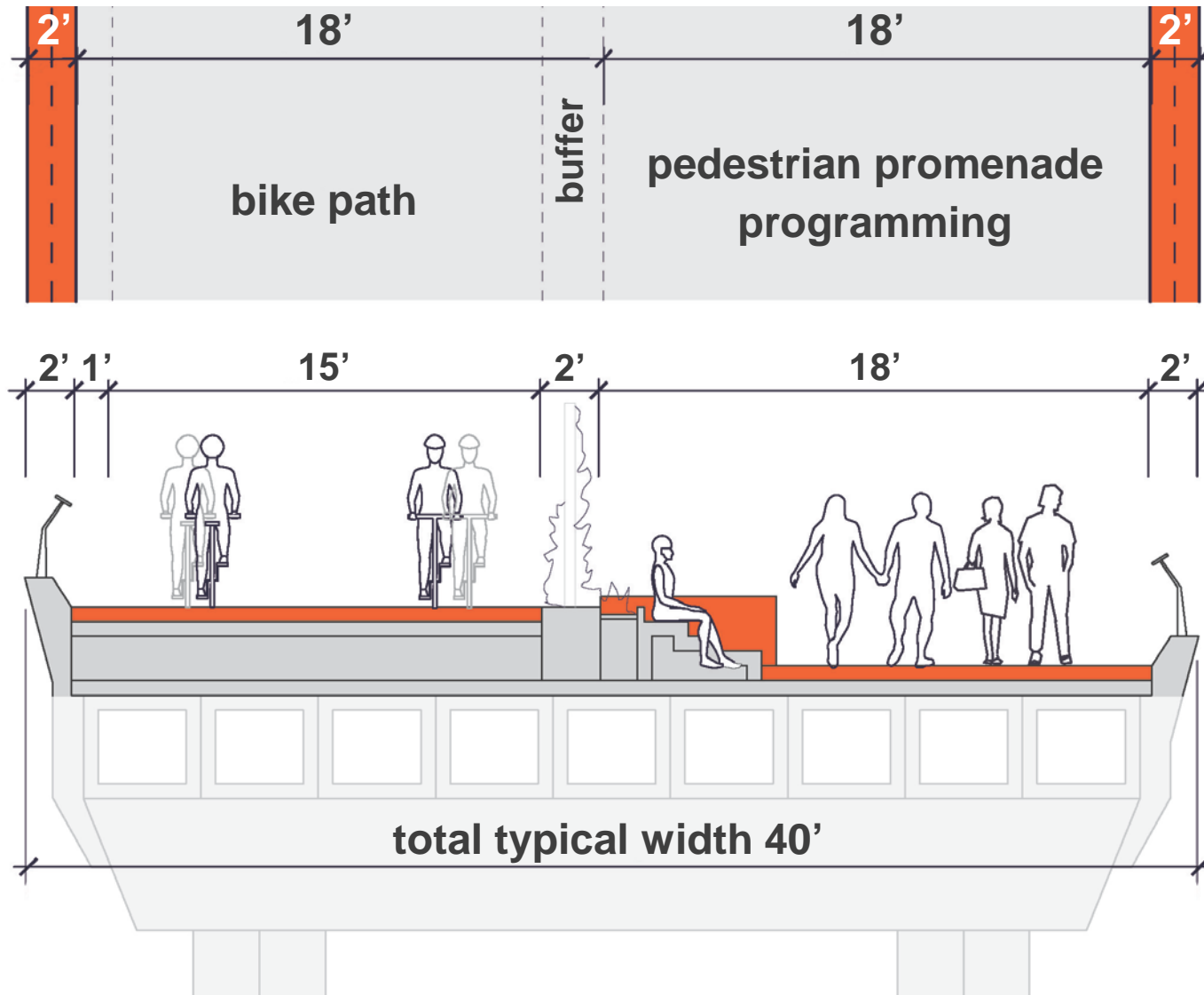
### 3 Studied Potential Open Space Configurations

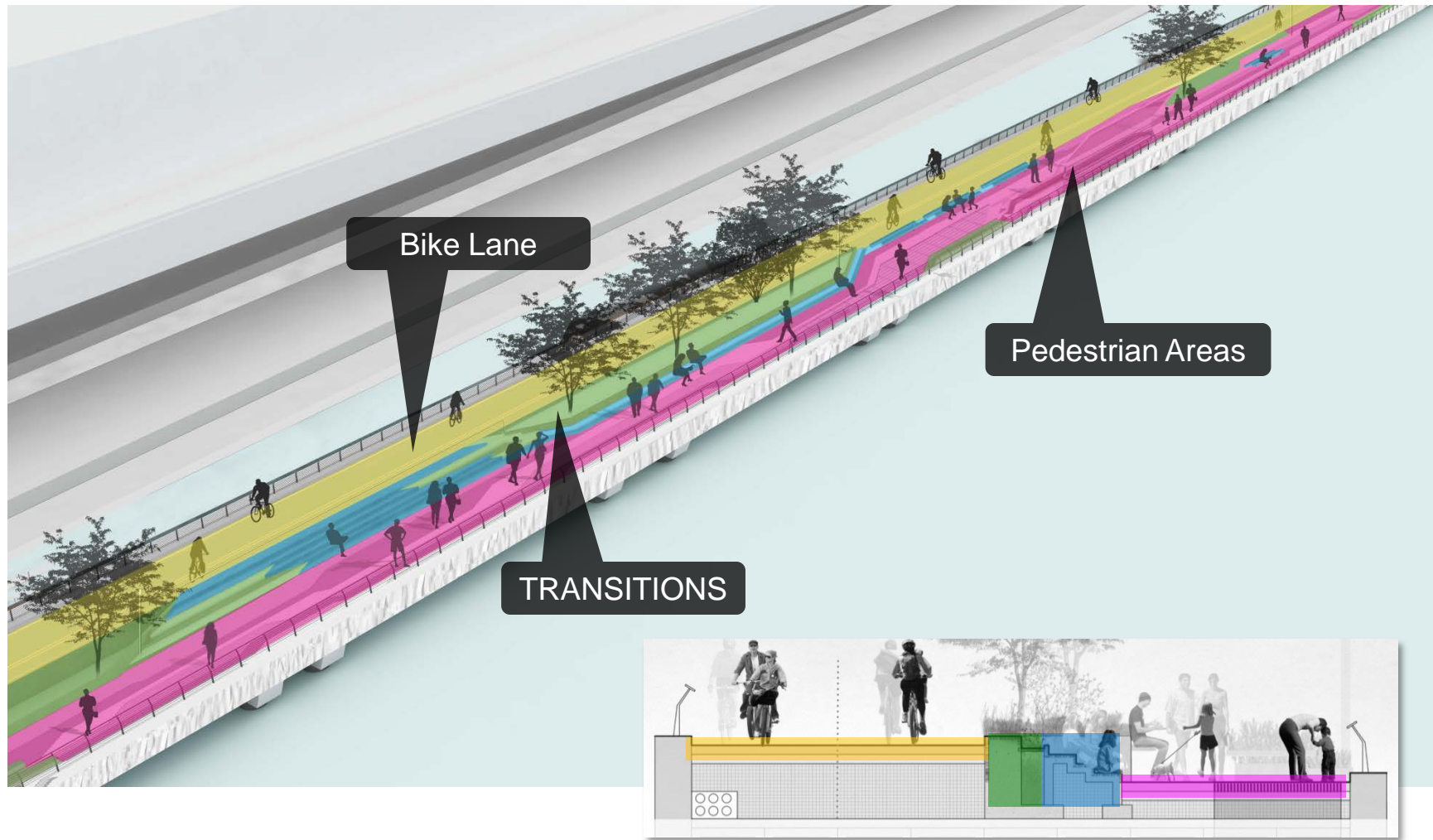




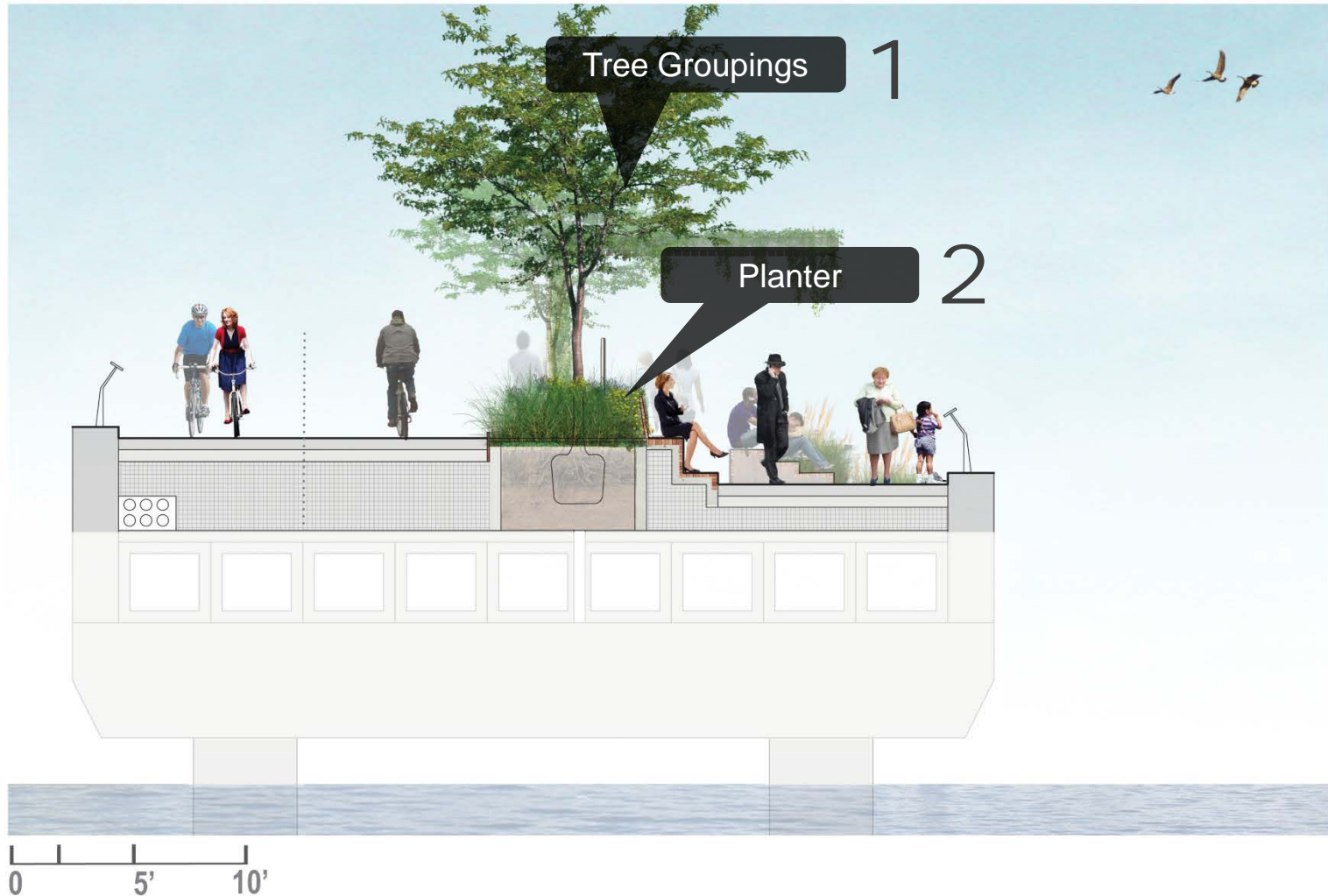


desired dimensions

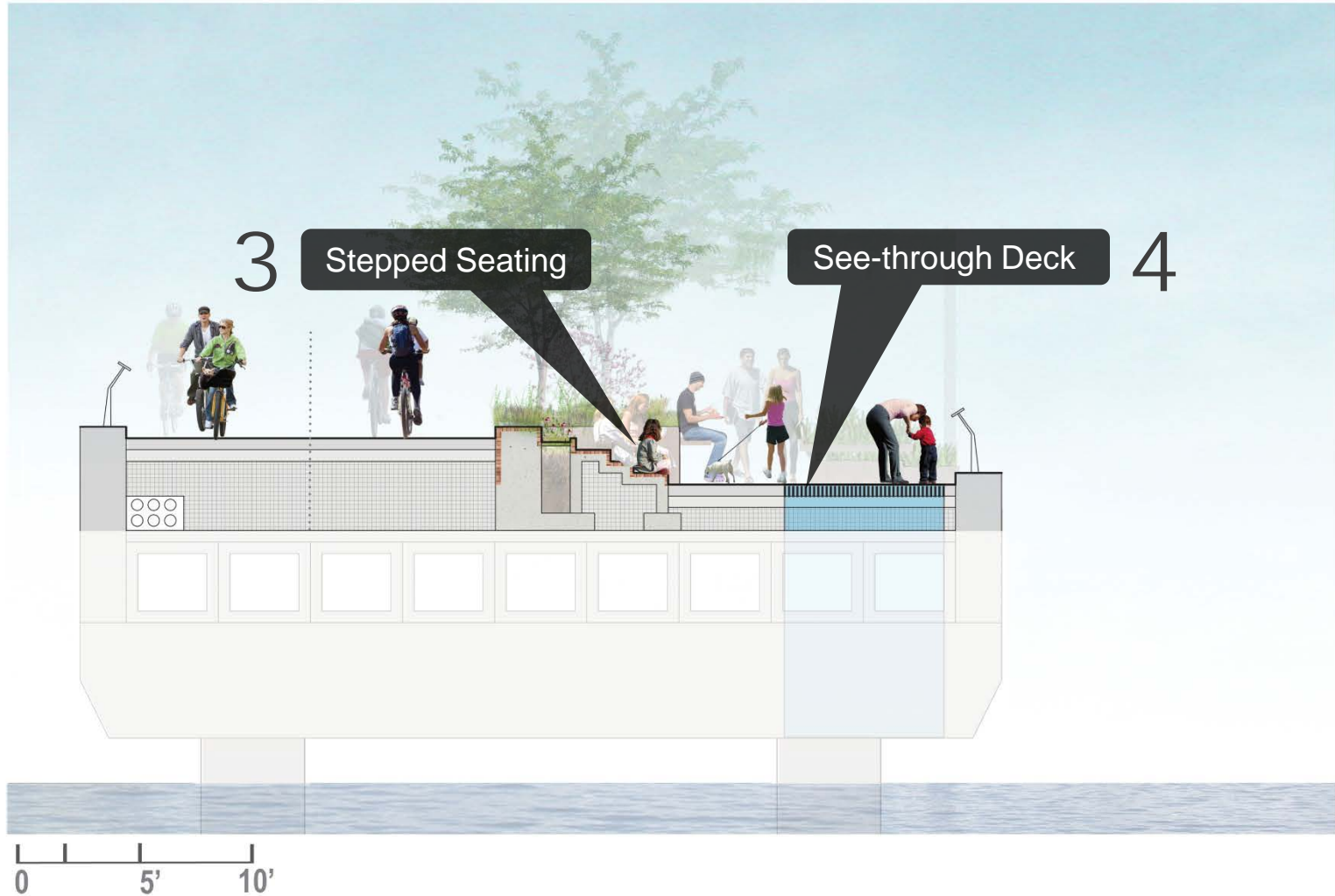




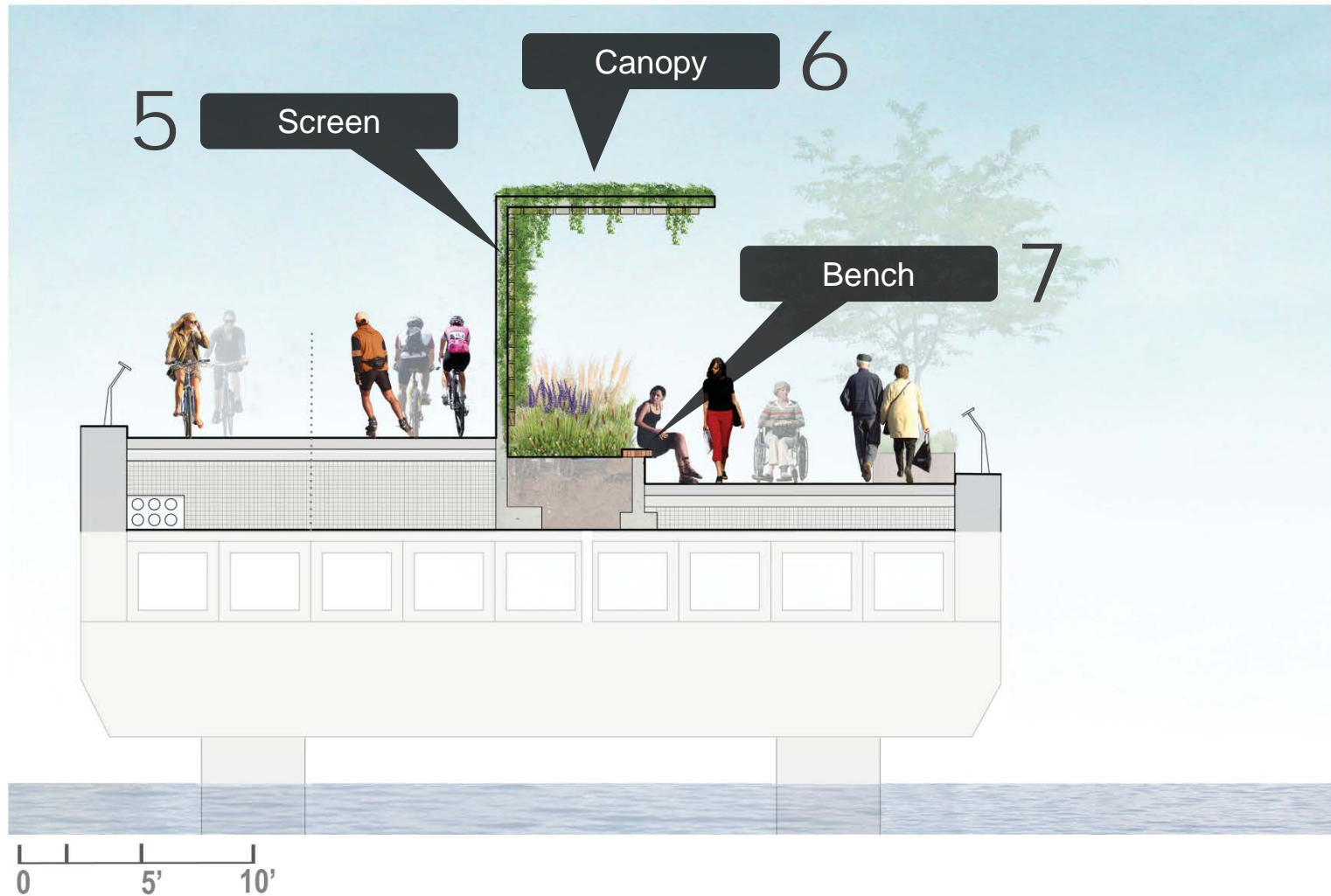
design kit-of-parts

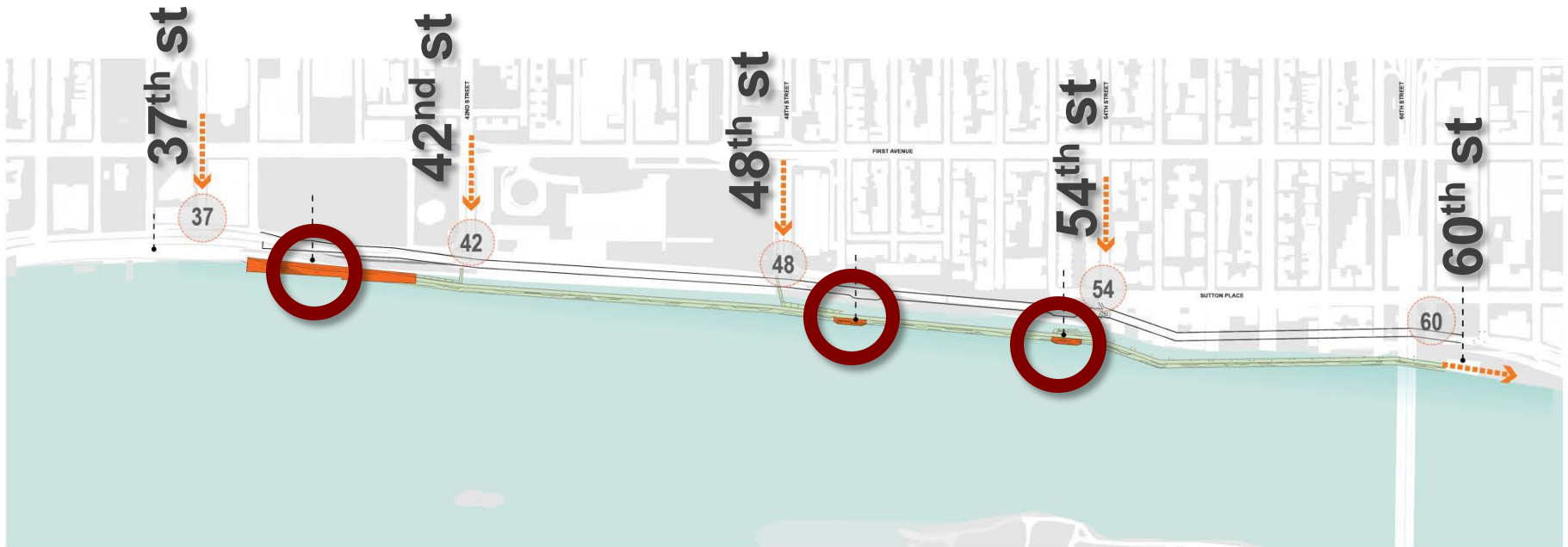


design kit-of-parts

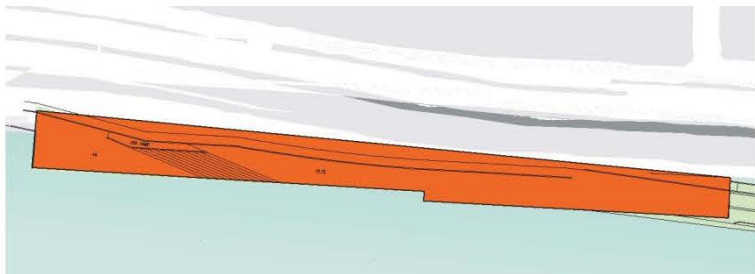


design kit-of-parts

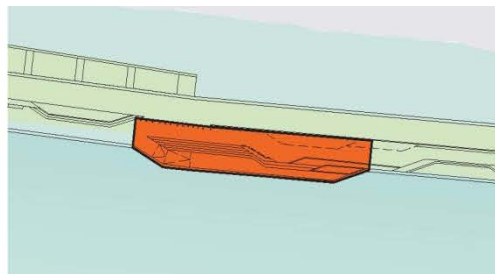




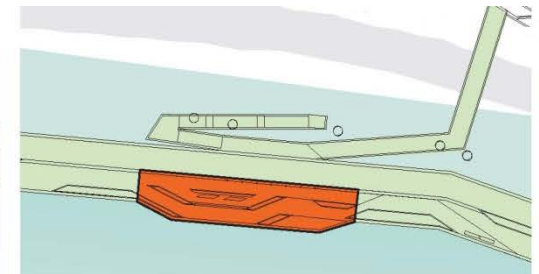
Node at 38<sup>th</sup> st

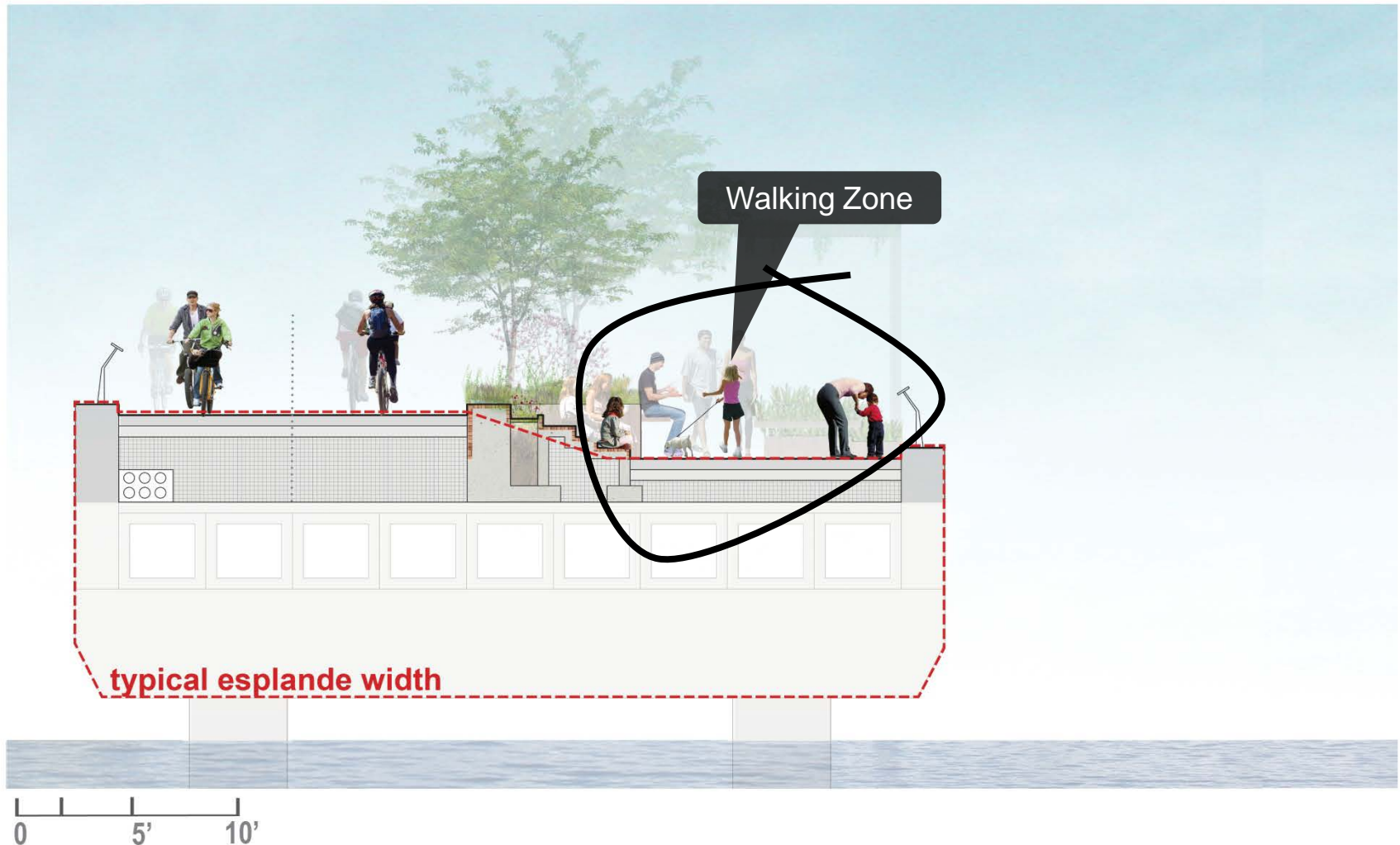


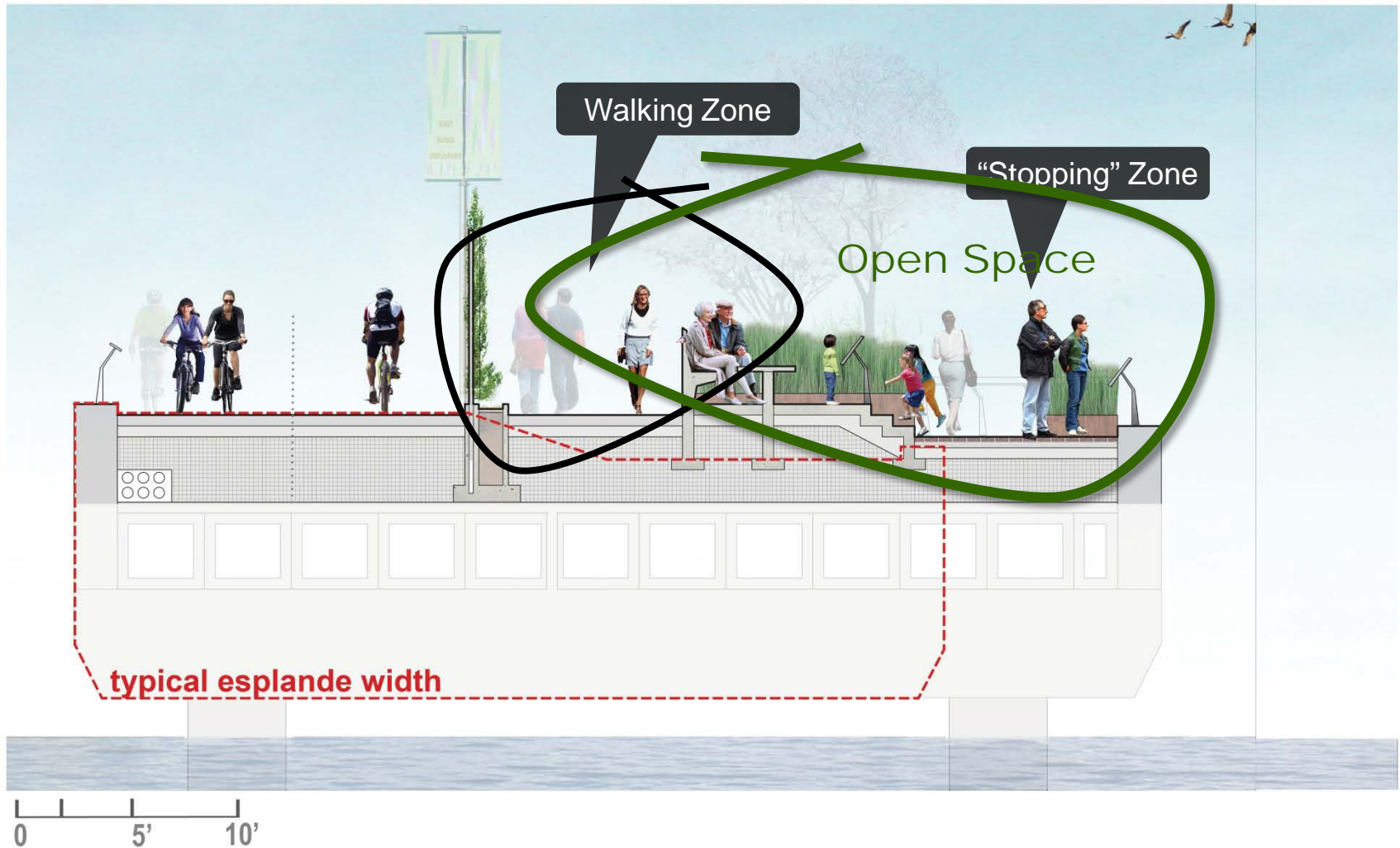
Node at 48<sup>th</sup> st



Node at 54<sup>th</sup> st









# Aspirations SUMMARY

## Activities

- Provide a **diversity** of uses and programs for all ages
- Organize programs to **maximize synergies** + land connections
- Facilitate **all-weather** use
- **Include:** Food and drink; Outdoor performance and gathering; Play; Fitness; Education + Interpretation; Restrooms



# Pre-Concept Design

# Activities



## Identifying Potential Synergies



## ACTIVE

## PASSIVE

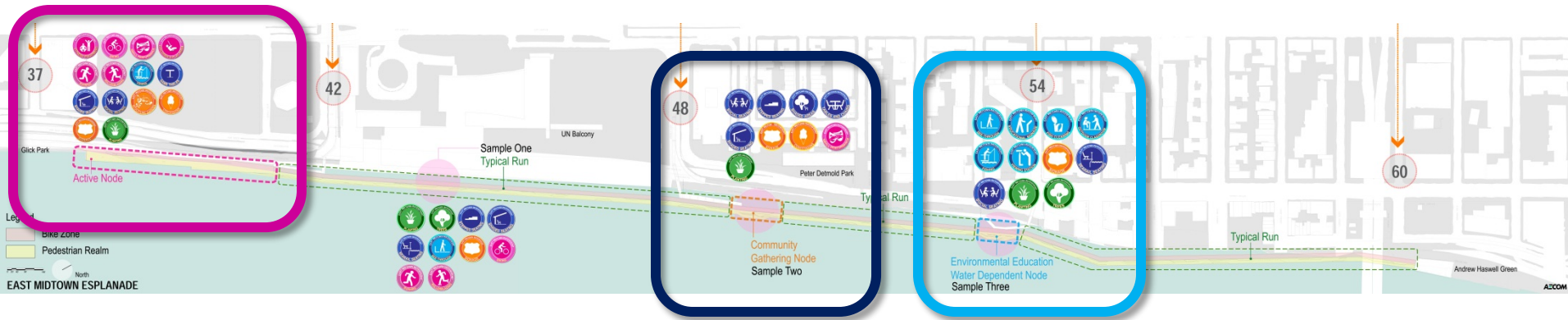
## WATER

## PLANTING

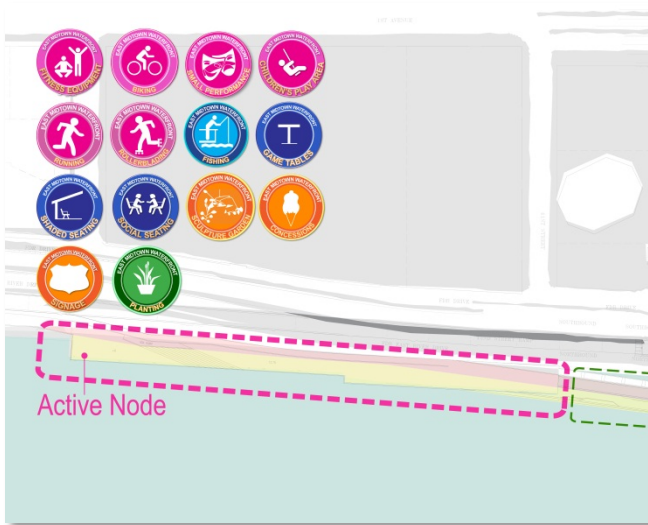
## FEATURES



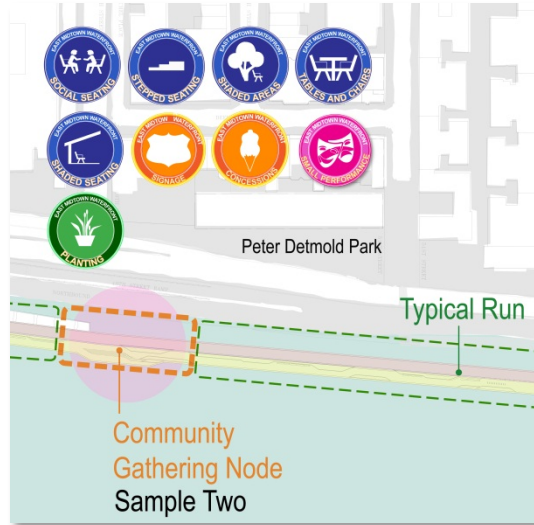
5 categories  
25 types



## NODES



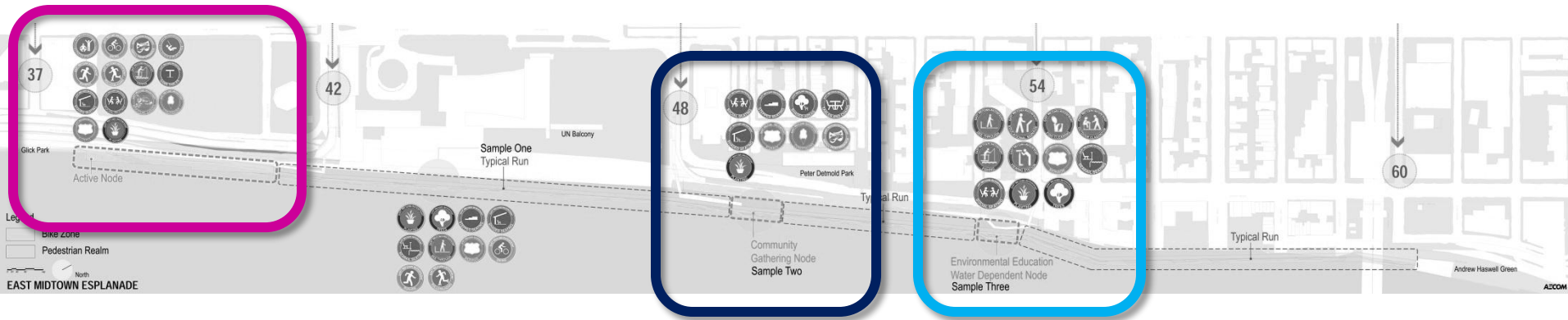
**ACTIVE node**



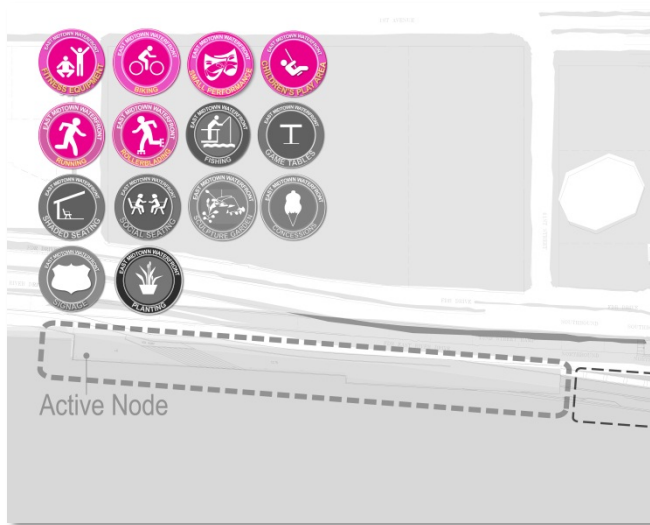
**GATHERING node**



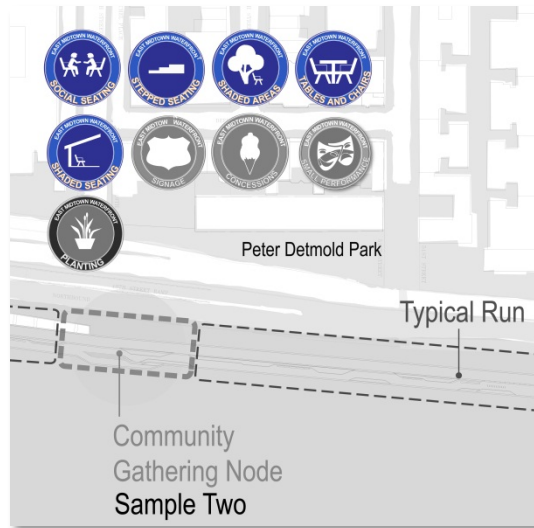
**EDUCATION node**



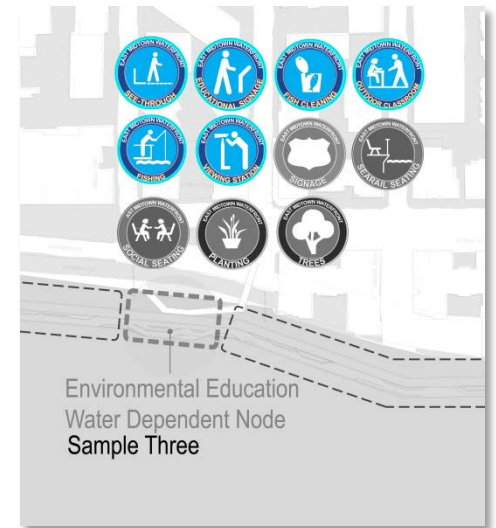
## NODES



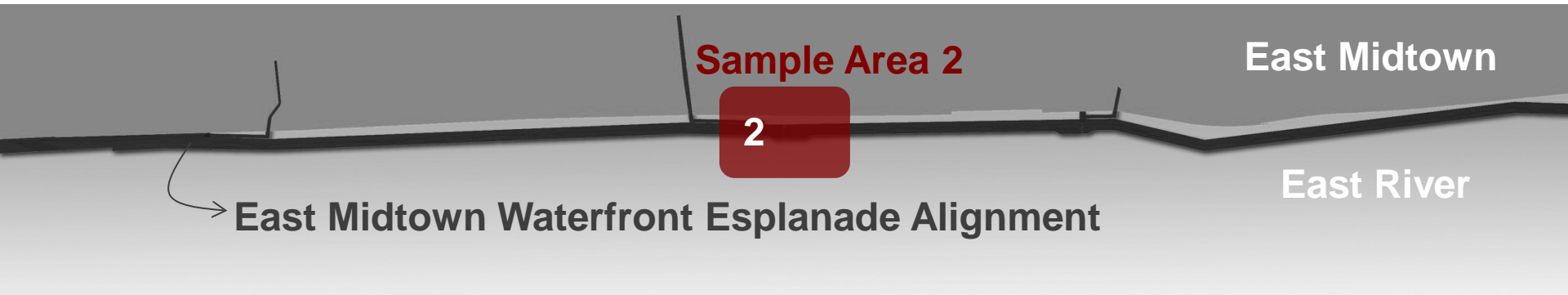
**ACTIVE node**



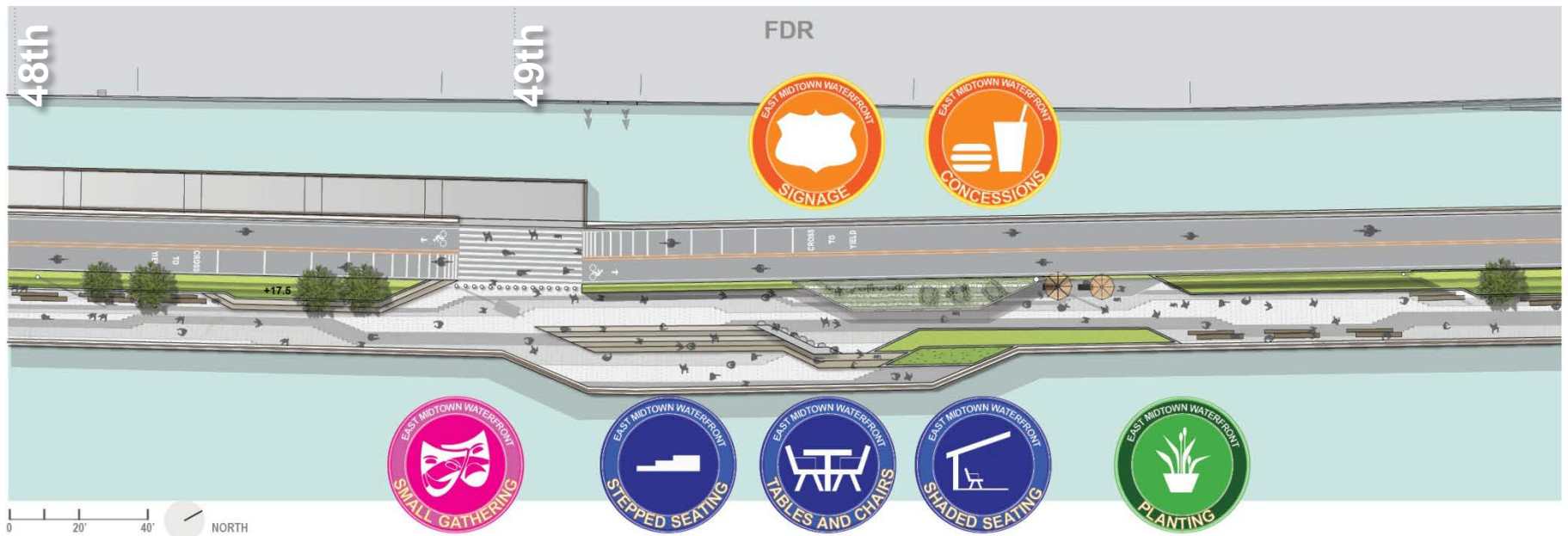
**GATHERING node**

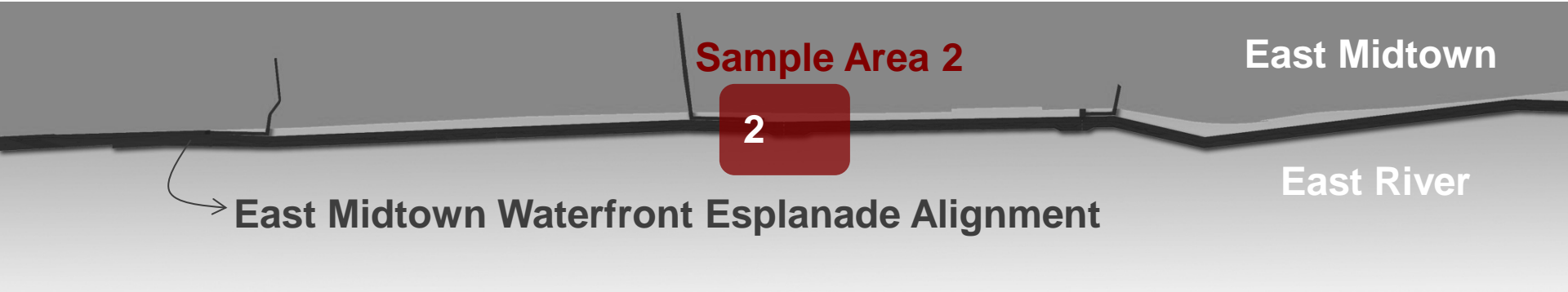


**EDUCATION node**

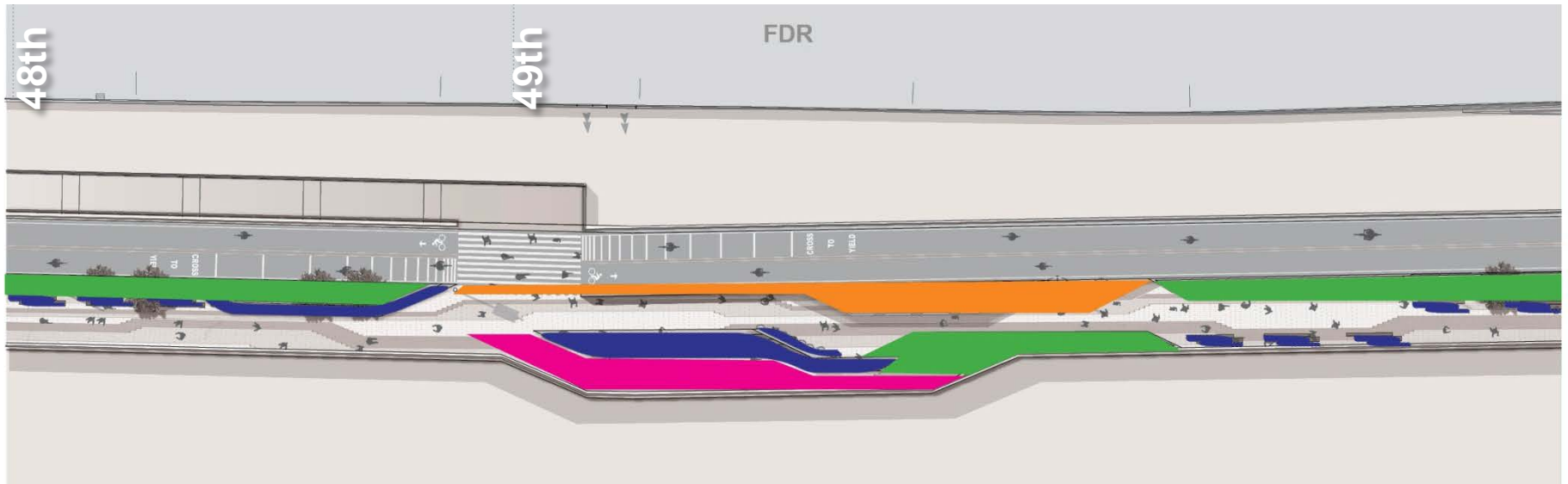


## Sample Zone 2 : GATHERING Node at 48<sup>th</sup> ST





## Sample Zone 2 : GATHERING Node at 48<sup>th</sup> ST

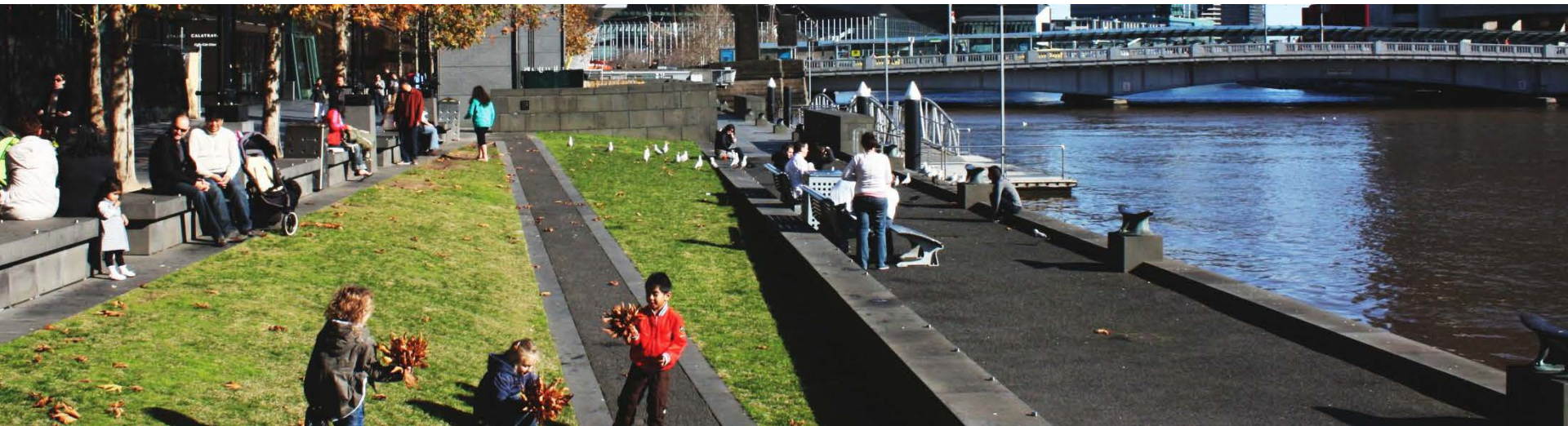


# Aspirations SUMMARY

---

## Place-Making

- Create a beautiful, **authentic** place (art, landscape, views) reflecting the **character** of this portion of the East River
- Balance **quiet + active** zones
- Integrate **planting** into the esplanade for shade, color, learning
- Facilitate **habitat** creation (land + aquatic)







**Character Zone A**  
**WATERSIDE PIER**

**Character Zone B**  
**UN BALCONY**

**Character Zone C**  
**RIVER GARDEN WALK**

**Character Zone D**  
**EAST RIVER DECK**

**Character Zone A  
WATERSIDE PIER**



**Character Zone B  
UN BALCONY**



**Character Zone C  
RIVER GARDEN WALK**



**Character Zone D  
EAST RIVER DECK**



# Pre-Concept Design

# Place-Making

## Character Zone B UN BALCONY (typical run)



# Pre-Concept Design

# Place-Making

## Character Zone B UN BALCONY (at node)



# Pre-Concept Design

# Place-Making

## Character Zone C RIVER GARDEN WALK





**III**

**Break-Out Session**



**IV**

**Reporting Back**



**V**

# **Project Timeline + Next Steps**



# Anticipated Timeline

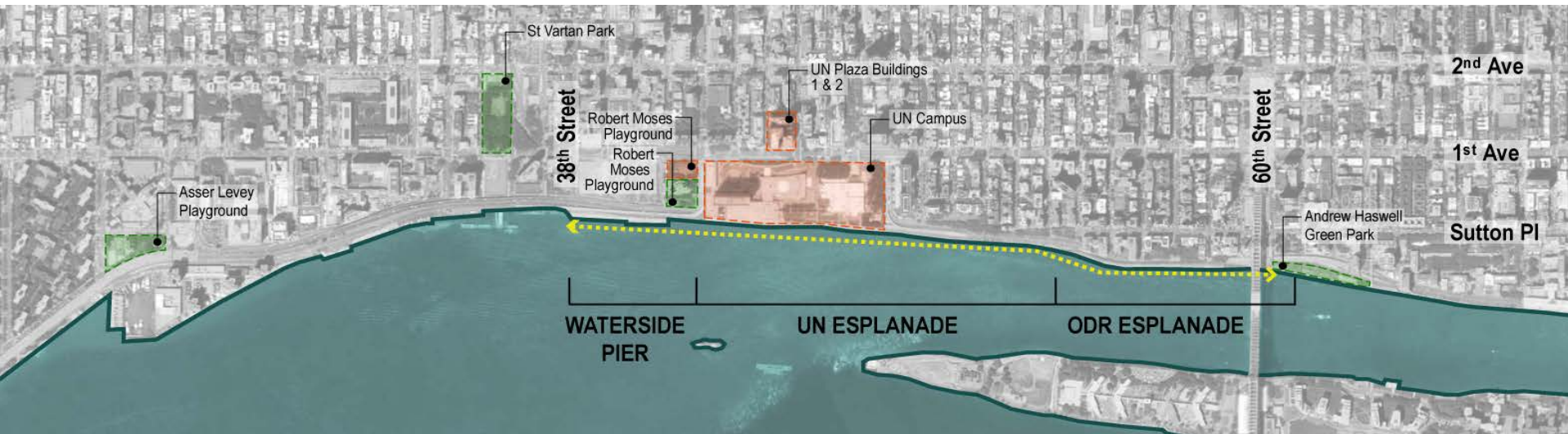
2013	<ul style="list-style-type: none"><li>• Additional community outreach and meetings with agencies</li><li>• Submit environmental review for Waterside Pier, ODR &amp; UN Esplanades</li><li>• File permit applications with Army Corps, Coast Guard, and DEC</li><li>• Commence Waterside Pier Sub-Structure construction</li></ul>
2015	<ul style="list-style-type: none"><li>• Waterside Pier Sub-Structure construction complete, opens to public</li></ul>
2016	<ul style="list-style-type: none"><li>• Commence construction of ODR Esplanade*</li></ul>
2018	<ul style="list-style-type: none"><li>• Complete ODR Esplanade*</li></ul>
2020	<ul style="list-style-type: none"><li>• Commence construction of UN Esplanade**</li></ul>
2024	<ul style="list-style-type: none"><li>• Complete UN Esplanade**</li></ul>

\* Contingent on UNDC bond issuance

\*\* Contingent on sale/refinancing of UN Plaza 1 & 2

# Next Steps

- Third working group meeting (targeting October) to present preferred conceptual designs
- Working group to be convened in the future when phases of esplanade receive funding and move forward
- Please send any additional ideas, comments, or questions to [EastMidtownWaterfront@nycedc.com](mailto:EastMidtownWaterfront@nycedc.com)
- Visit the project web page: [www.nycedc.com/project/east-midtown-waterfront](http://www.nycedc.com/project/east-midtown-waterfront)



[www.nycedc.com/project/east-midtown-waterfront](http://www.nycedc.com/project/east-midtown-waterfront)

[EastMidtownWaterfront@nycedc.com](mailto:EastMidtownWaterfront@nycedc.com)

**Thank you!**