



Chinatown Connections

NYC/EDC



CCWG # 4 – 10/23/2024

Agenda

Chinatown Connection Working Group Meeting #4

- Introductions (5 mins)
- Follow-ups from September CCWG (20)
- Presentation (50)
 - Traffic Study
 - SIPs
 - Memorial Arch
 - Chinatown Connections Process:
 - CCWG Role, the City Team's Commitment
 - Schedule Overview
 - Next Steps
- Q&A (15)

Follow-ups from September CCWG

Traffic Study



Traffic Study

Timeline

- | | |
|---|--|
| ▪ Scope of work: | Completed Spring 2024 |
| ▪ Data collection: | Completed May 2024 |
| ▪ Existing conditions analysis: | Completed September 2024 |
| ▪ Park Row Reopening
vehicular demand analysis: | In Progress - Expected October 2024 |
| ▪ Proposed Conditions Analysis
(Park Row/Kimlau Square): | Expected November 2024 |
| ▪ Interim Results of Full Study: | Expected December 2024 |
| ▪ Final Technical Report: | Expected End of Year 2024 or Jan/Feb 2025 |

Traffic Study

Overview

Three general scenarios will be studied:

1. Only Kimlau Square Reorganization
2. Only Park Row Reopening
3. Both Kimlau Square Reorganization and Park Row Reopening

Study will analyze:

1. Vehicular, Bicyclists, and Pedestrian Counts
2. Travel time/travel speeds
3. Parking and loading operations
4. Changes in travel patterns in Park Row reopening scenarios
5. Changes in conflict points between modes of travel (Pedestrian/Cyclists/Motorists)

Study provides data and context to be used in decision making, but does not make or suggest a determination on its own



Traffic Study

Park Row Volume Assumptions

DOT and Consultant Team are evaluating multiple sources to determine estimated volume changes if Park Row were to reopen to traffic

- 2006 One Police Plaza Security Plan EIS
- Current Origin/Destination Data
- DOT Lower Manhattan Network Model



Traffic Study

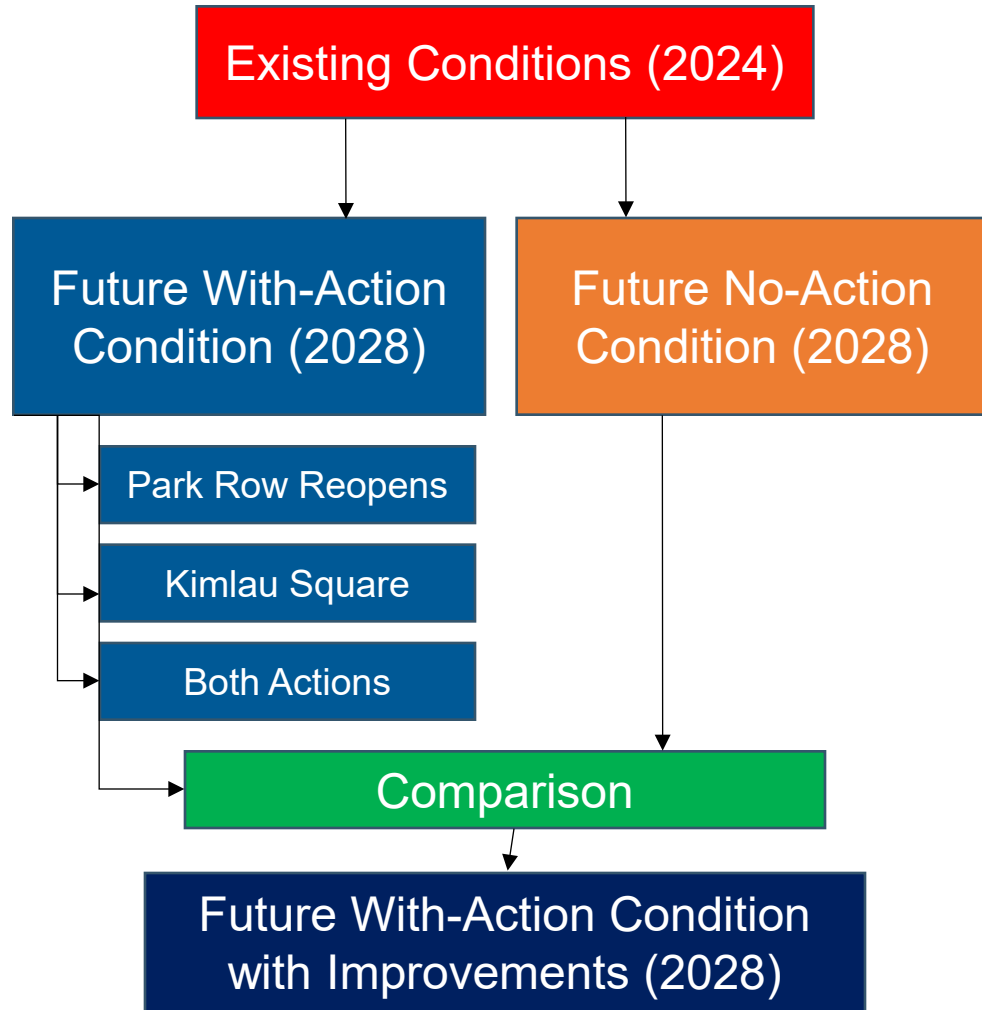
Scenario Modeling

Each scenario (Future With-Action Condition) is modeled under existing roadway configurations and compared against a model of existing conditions during the year of project completion (Future No-Action Condition)

Depending on results from the comparison of the two models, changes may be suggested and included in a revised model (Future Build Condition with Improvements)

Proposed changes could include but are not limited to:

- Lane assignment changes
- Number of lanes at approach
- Geometric changes
- Signal timing changes



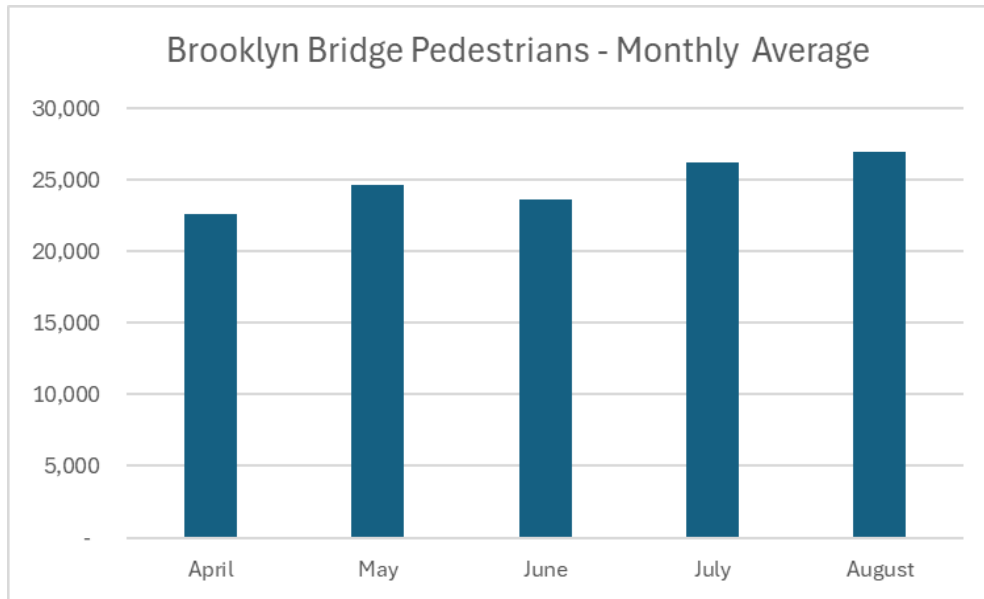
Traffic Study

Questions from Previous Meeting

Question:

Counts were collected in May, would counting in the summer show significantly higher pedestrian volumes at the intersection?

Additional counts are not available at Kimlau Square, however using counts from the Brooklyn Bridge as a nearby example, summer volumes of pedestrian crossings is 7-10% higher in June/July.



Traffic Study

Questions from Previous Meeting

Question:

How much of the traffic currently in Kimlau Square is originating or destined for Chinatown?

Using available Origin/Destination* data, DOT found that:

AM Peak Hour (8-9AM) – Tues, Wed, Thurs

- 58% of trips passing through Kimlau Square have destinations in Chinatown
- 19% of trips passing through Kimlau Square have origins in Chinatown

PM Peak Hour (5-6PM) – Tues, Wed, Thurs

- 24% of trips passing through Kimlau Square have destinations in Chinatown
- 47% of trips passing through Kimlau Square have origins in Chinatown

Available Origin/Destination is a subset off all trips and data points may not be fully reflective of all movements



SIPs Updates

SIPs Updates

Park Row Sidewalk and Bike Lane

- Clarified road and sidewalk use for all users, edge objects to be installed.
- NYC DOT identified 15 legal parking spaces that can be used by NYPD.
- These spaces provide protection to the newly consolidated two-way bike lane which has been implemented in interim materials.
- Dedicated parking spaces help to keep sidewalk and bike lanes clear from vehicle obstructions. Currently in implementation, expected completion within the next 2-4 weeks.



Park Row, January 2024



Park Row, pre art installation, Fall 2024

SIPs Updates

New Sidewalk at the Pinch Point

- Existing conditions on Park Row present dangerous conditions for cyclists and pedestrians as they travel to and from Chinatown at the location in the photo.
- NYC DOT and NYPD developed a workable solution that moves fences off the pedestrian path and allows for the creation of an ADA compliant sidewalk for pedestrians.
- Separates two- way bike travel from pedestrian use.
- In construction, anticipated to be finished by the end of the year.



Park Row Pinch Point, Fall 2023



Pinch Point Sidewalk Construction, Fall 2024

SIPs Updates

Frankfort Street and Park Row

- New sidewalk and pedestrian ramp complete at Park Row and Frankfort Street.
- Wayfinding footing installed, installation date in 2025
- In 2025 a new NW bound protected bike lane will be installed and the SE bound bike lane will be protected.
- *Implementation expected early summer 2025 for remaining items on Frankfort.*



Park Row, January 2024



Park Row and Frankfort Street, Fall 2024

SIPs Updates

Artwork Implementation

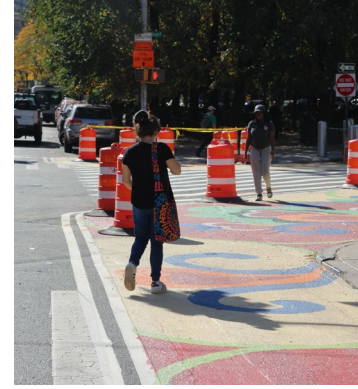
- Three of the 4 art sites have been installed or are nearing completion.
- Painted neckdowns shorten crossing distances, create high visibility pedestrian spaces.
- The art for the Frankfort Street fence is expected to be late 2024 early 2025.



Park Row Pedestrian Pathway



Brooklyn Bridge Stairwell

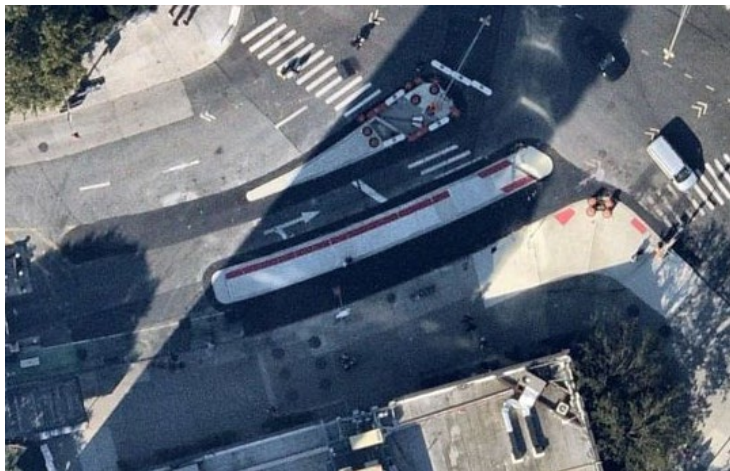


Painted neckdown at St. James Pl

SIPs Updates

Bus Boarding Island and Two-Way Bike Path

- Boarding island completed
- Bus Stop signage completed
- Two-way bike path markings are expected in 2-4 weeks



Bus Islands Citywide

Similar Treatments to Park Row:

- Single lane roadway (in bus island direction)
- Bus stops in single moving lane
- Two-way bike path

Many other locations citywide where there are multiple travel lanes for vehicles to bypass bus, but passengers must cross bike path



Willis Ave and 144th St, BX



Amsterdam Ave and 190th St, MN



Willis Ave and 144th St, BX



Webster Ave and 233rd St, BX

Memorial Arch



Memorial Arch

Project History

- Parks conducted an engineering safety inspection of the Memorial Arch in 2019 and suggested the following measures:
 - Placing barricades around the Arch
 - Crack Monitoring
 - Steel Bracing Installation
 - Developing design for reconstruction
- All of this work has been completed and the project is now in procurement



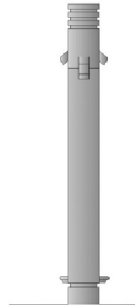
Memorial Arch

Project Scope

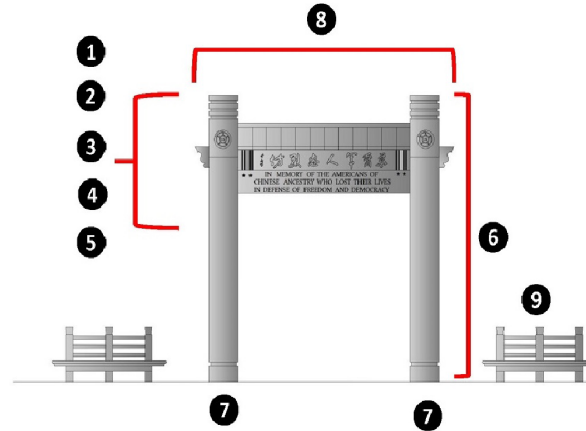
Proposed Work Key

Work shown is typical for all elevations

1. Disassemble arch lintel/column connections and lintel roof stones.
2. Remove cracked portions of granite and hold for re-use or for modeling new replacement units
3. New and/or refurbished structural steel assembly and connections
4. New matching granite components or reinstall salvaged building fabric wherever possible
5. Rout and replace failed mortar joints
6. Chemically clean/wash entire structure
7. Footing/foundation stabilization as required
8. Install new bird deterrent apparatus along roof ridge, column tops and projecting side brackets.
9. Restore and chemically clean existing cast concrete benches



North/South Elevation



East/West Elevation



Kimlau Memorial Arch Reconstruction
Kimlau Square | Borough of Manhattan



Chinatown Connections Process

The CCWG's Role in the Process

The CCWG will be central in guiding our approach to engagement and will provide feedback throughout the broader process to develop the vision.

Responsibilities:

- Meet as needed to provide guidance on key components of the project, including:
 - Street Improvement Project Implementation
 - Intersection realignment and Kimlau Square Renovation
 - Overall engagement process strategy
 - Validating key takeaways and incorporation of community feedback across project components
- Participate in site tours, public workshops, community events
- Provide feedback and review on a timely basis for draft materials to support design and engagement.
- Collaborate with Project Team for quotes, images, press release events, tours, as needed
- Act as representatives of the project/engagement process within the local community, by:
 - disseminating project information
 - connecting community stakeholders to the project team
 - promoting community workshops throughout neighborhood

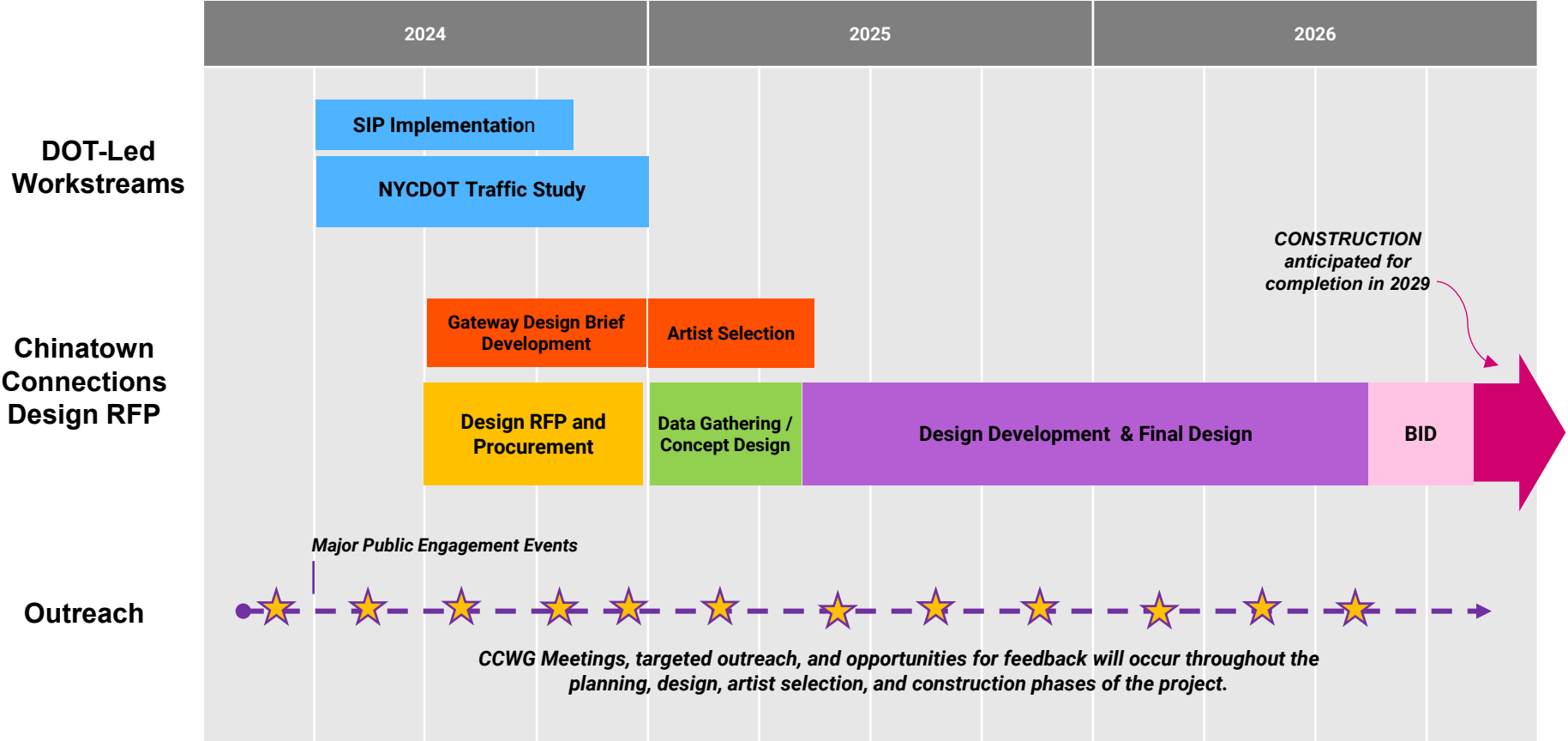
Interagency Project Team's Commitment:

We are committed to working with each of you to create a **robust, inclusive, and transparent engagement and decision-making process** for the Chinatown Connections Project.

Our work together will:

- **Engage a broad range of community members and stakeholders**, including the neighborhood's distinct cultural communities, local partnerships and relationships
- Rely on **local partnerships** and relationships
- Build a **shared understanding of opportunities, challenges, and trade offs** by completing traffic studies, existing conditions analysis, and sharing key findings from all technical work completed
- Implement a project that **incorporates and reflects community feedback** received through the engagement process

Overall Project Schedule



Next Steps

November:

- CB 1 and CB 3 Meetings
- CCWG Meeting #5
 - NYPD Security Briefing
 - Traffic Study:
 - Complete Park Row Vehicular Demand Analysis
 - Draft Park Row Reopening Analysis
 - SIP updates: As needed

December:

- CCWG Meeting #6:
 - Traffic Study:
 - Complete Park Row Reopening Analysis
 - Draft Kimlau Square Reorganization Analysis

January:

- Design Consultants begin work
- Community Engagement continues
- Traffic Study: Interim Results

Q&A

