

# Manhattan Greenway UN Esplanade

Construction Management Consultant Services Information Session

10:00 AM – 11:00 AM

August 28, 2024



NYC Parks



# Agenda

- Project Background & Overview
- Org Chart & Project Schedule
- Scope Overview
- M/WBE Goals
- Contract Updates & Summary
- Selection Criteria
- RFP Schedule
- Next Steps & Questions

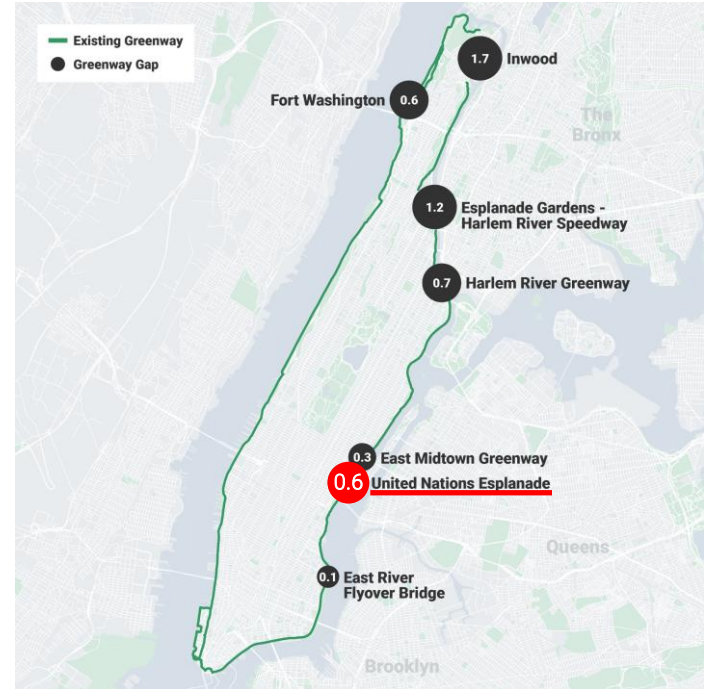


2013 Masterplan Rendering of Esplanade looking south at United Nations Building

# Project Background

## Manhattan Greenway

- Manhattan Greenway UN Esplanade is an integral part for completing the 32-mile greenway “loop” around the coastline of Manhattan and last gap on the East River
- Project Goals
  - Close the existing gap in the Manhattan Waterfront Greenway
  - Provide safe and clear continuous bike and pedestrian connection to existing and future esplanade
  - Provide public access to the waterfront and create new public open space to the East Midtown communities



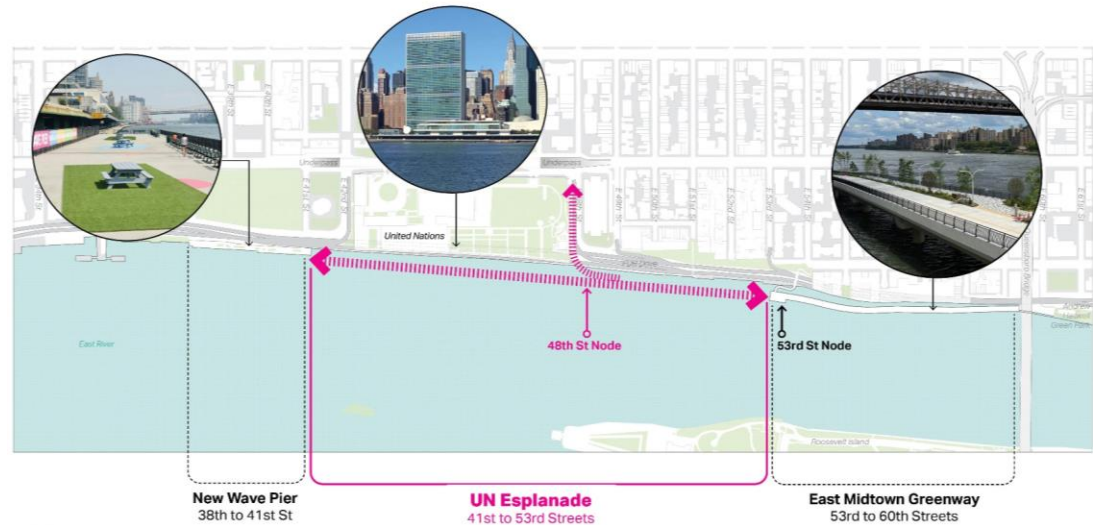
# Project Location

In-Water Esplanade between East 41<sup>st</sup> - East 53<sup>rd</sup> Street on the East River



# Project Overview

- UN Esplanade gap is 0.6 mile and can create up to 3 acres of waterfront open space
- The alignment design is all outboard of the FDR.
- Up to 40ft esplanade width; cyclist on the inshore and walkway offshore
- Connection to New Wave Pier at E 41<sup>st</sup> and EMG at 53<sup>rd</sup> Street
- Node at E 48<sup>th</sup> Street with additional programming
- Upland connection at E. 48<sup>th</sup> Street



# Existing Conditions



South: New Wave Pier (Existing)



UN Esplanade (Proposing)



North: East Midtown Greenway & 54<sup>th</sup> Pedestrian Bridge (Opened in 2023)

# Anticipated Project Schedule

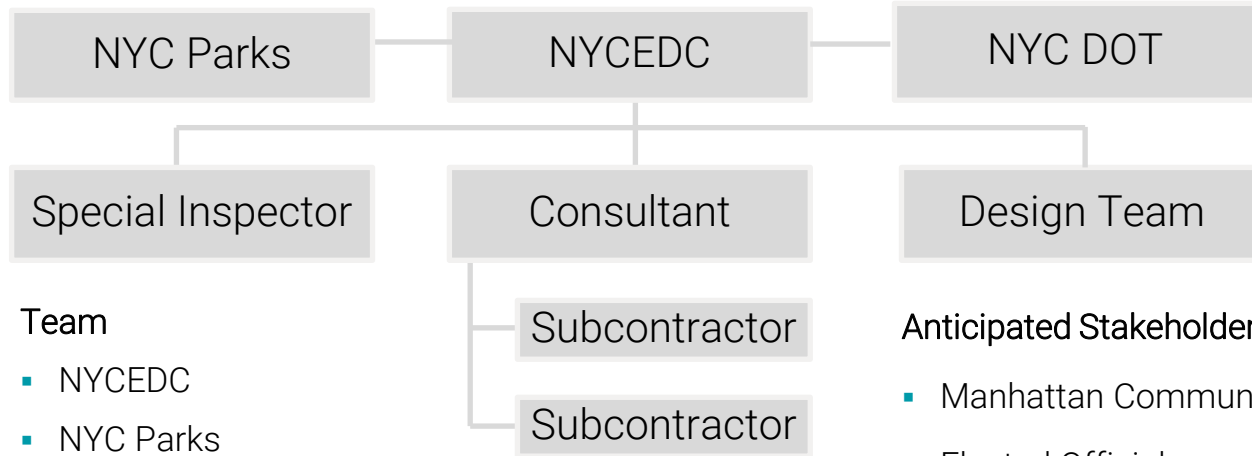
## Design

- Started November 2023
- Conceptual Design to PDC October meeting
- Anticipated completion in 2026

## Construction

- Anticipated duration of pre-construction is 18 months
- Anticipated duration of construction is 24 months
- Anticipated duration of post-construction is 12 months

# Project Organization Chart



## Team

- NYCEDC
- NYC Parks
- NYC DOT
- The Consultant
- EDC-Retained Design Team (lead by AECOM)
- EDC-Retained Special Inspector (TBD)

## Anticipated Stakeholders

- Manhattan Community Board 6
- Elected Officials
- Community Organizations



# Anticipated Project Team

**Anticipated Project Team includes, but is not limited to:**

- Construction Manager - Project Lead
- Sr. Project Manager /Project Executive
- Construction Project Managers, Assistant Project Managers, and Project Engineers or equivalent
- Construction Field Supervisors, DOB Licensed Site Safety Managers, DOB Licensed Site Safety Coordinators, DOB Licensed Construction Superintendents or equivalent
- NYS Licensed Resident Engineers with NYC DEP and NYCDOT experience
- Project Estimator or equivalent
- Project Controls/Scheduling Expert
- Procurement Specialist/Purchasing Agent
- Project Accountant
- Code Compliance Reviewer
- Quality Assurance/Quality Control Reviewer
- Community Construction Liaison
- Construction Material Manager (ENVISION certified)

# M/WBE Goals and Subcontractor Participation Plan

- **M/WBE Program:** M/WBE Program established in NYC Administrative Code, LL129 of 2005 and LL1 of 2013
  - M/WBEs must be certified by NYC Dept. of Small Business Services
- **M/WBE Participation Goal for RFP:** 30% (as percentage of total contract value)
- **Respondents must submit the M/WBE Narrative Form demonstrating how they will meet the M/WBE Participation Goal. It should:**
  - Speak in detail to respondent's commitment to ensuring proposed level of M/WBE participation
  - Outline specific strategies to drive participation and methods for ensuring accountability
  - Respondents must also submit Intent to Perform as Subcontractor forms for each of the firms on the M/W/DBE Subcontractors Participation Plan, providing confirmation that the firms have been contacted and plan to work on the project
- **Plan will be rated and factor into selection**
  - Respondents submitting proposals with a Participation Goal lower than the lower bound of the range shall receive a score of zero (0) for this selection criteria
  - The higher bound represents the optimum participation goal. Proposed Participation Goals that exceed this higher bound are welcome.
  - 15% of selection criteria corresponds to the quality of the M/WBE Narrative and Participation Plan

# Meeting M/WBE Goals

- **Final M/WBE Goals will be incorporated into the Contract**
  - Selected Respondents will be required to meet the stated M/WBE goals or demonstrate good faith efforts
  - **Diverse Utilization Goals** will be set in coordination with the Selected Respondent, post-award.
    - Goals will be set by race, ethnicity and gender under the following categories: Black Male and Female, Hispanic Male and Female, Asian Male and Female and non-minority Women.
    - Goals will be set based on the availability of firms given scope and trades utilized on the project.
- **Identifying M/WBE Partners**
  - Use [SBS](#) directories to find M/WBEs in a specific field
  - Check out the [Interested Subcontractor and Supplier](#) List for this RFP
  - Network at this info session
  - NYCEDC can assist in identifying M/WBEs
  - Refer to good faith efforts section in draft contract for more ideas
- **Make use of the Contract Financing Loan Fund**
  - Mobilization loans for M/W/DBE firms participating as either prime or subcontractor
  - Amounts up to \$500,000, may be used to buy long lead equipment, material, and/or labor costs

# Consultant Selection Criteria

- 30% Quality of Proposal
- 25% The respondent's experience in providing services similar to the Scope of Services
- 20% Quality of Consultant team; quality of Respondent's management, reputation and references
- 15% M/WBE Participation Goals
- 10% Fee and Cost Schedule



2013 Masterplan Rendering of Esplanade looking north at East 48<sup>th</sup> Street Node

# Contract Summary & Updates

- NYCEDC is managing the design and construction of the project in partnership with DPR and DOT
- Anticipated Notice to Proceed: December 2024
- M/WBE Participation Goals: **30%**
- Anticipate construction budget: approximately **\$120 million** (inclusive of hard costs, escalation, and contingencies)
- Funding: City Capital
- RFP/Contract Updates
  - Fee schedule – Profit is separate line item and not included in the multiplier
  - Staffing rate increases limited to updates once per year

# RFP Schedule

- Questions/Clarifications Deadline: **5:00 PM, September 6**
  - Contact email address: [UNEsplanadeCMRFP@edc.nyc](mailto:UNEsplanadeCMRFP@edc.nyc)
- Question Responses Posted: **September 13**
- Proposal Submission Deadline: **11: 59 PM, September 25**
  - Electronically upload a proposal for this solicitation in the “Deadlines” section of this project’s RFP web page, which can be found at <https://edc.nyc/rfps>
- Potential Interviews: **week of October 7**
- Anticipated Notice to Proceed: **December 2024**

# RFP Submission

Submit all documents in a single .zip file labelled with RFP title & your company name in all filenames

## Proposal (1) File:

- Upload as a single PDF

## Cost Schedule (2) Files:

- Excel format – follow the Sample Cost Schedule provided in RFP Exhibit 2
- PDF format – Print to PDF from the Excel file

## Doing Business Data Form (1) File:

- Upload as a single PDF

## MWBE forms (1) File :

- Upload as a single PDF

Each proposal shall include the following sections:

- Cover letter
- Statement of Approach
- Project Team
  - Staff Resumes
  - Organizational Chart
  - Subconsultants
- Fee schedule
- Schedule
- M/WBE Narrative and Participation Plan
- M/WBE Capacity Building Rider

# Thank you!

Direct all RFP questions to [UNEsplanadeCMRFP@edc.nyc](mailto:UNEsplanadeCMRFP@edc.nyc) by **September 6** by 5:00 pm

Any technical questions regarding RFP submission may be sent to [RFPRequest@edc.nyc](mailto:RFPRequest@edc.nyc) thru **September 25**



NYC Parks

