



**NYC / EDC**

# **March 2020**

## **EMPLOYMENT ANALYSIS REPORT**

The *Employment Analysis Report* provides a monthly update on the status of the New York City labor market through employment, unemployment, and wage statistics. It is drafted by the Economic Research & Policy group at NYCEDC.

## Report Summary

- Private sector payroll fell by 37,300 in March 2020 (compared to February 2020). February employment was revised upward, with private sector job increase now reported as 15,800 (originally reported as 15,500).
  - The Arts, Entertainment, & Recreation sector added 1,300 jobs, the only sector to add over 1,000 jobs.
  - Nine sectors lost over 1,000 jobs; Accommodation & Food Services saw the largest decline, losing 12,400 jobs
- The city's unemployment rate rose to 4.4 percent, while labor force participation fell to 59.0 percent.
  - Employed residents fell by 129,300 in March, while the number of unemployed residents increased by 37,400.
- Private sector payroll jobs grew by 12,200 from March 2019 to March 2020, an increase of 0.3 percent. Private sector jobs increased by 1.0 percent nationwide.

## Private and Total Payroll Employment

(Numbers include all persons employed in the city, regardless of place of residence.)

Private sector payroll employment in New York City fell by 37,300 in March 2020 from a month earlier, according to employment data released by the New York State Department of Labor (NYSDOL), analyzed by New York City Economic Development Corporation's (NYCEDC) Economic Research & Policy group (data incorporate seasonal adjustments). Government jobs in the city rose by 200, resulting in a net decrease of 37,000 private and public sector payroll jobs.

Revised data for February 2020 indicate that private jobs rose by 15,800 and total jobs rose by 16,100 from the prior month. For the 12 months ending in March 2020, the city's private sector payroll jobs grew by 12,200, an increase of 0.3 percent. Employment at the national level grew 1.0 percent during the period.

Table 1 summarizes city, state, and federal payroll employment data. (Numbers include all persons employed in the city/state, regardless of place of residence.)

*Table 1. Employment Overview*

	NYC		NYS		U.S.	
Total Nonfarm Jobs	4,667,700		9,805,600		151,786,000	
Total Private Sector Jobs	4,072,200		8,315,700		129,027,000	
<b>Private Sector Changes</b>						
Change from February 2020 (SA)	(37,300)	-0.9%	(42,900)	-0.5%	(713,000)	-0.5%
Change from March 2019 (NSA)	12,200	0.3%	12,900	0.2%	1,230,000	1.0%
Change from December 2013 (SA)	559,500	15.9%	749,600	9.9%	13,474,000	11.7%

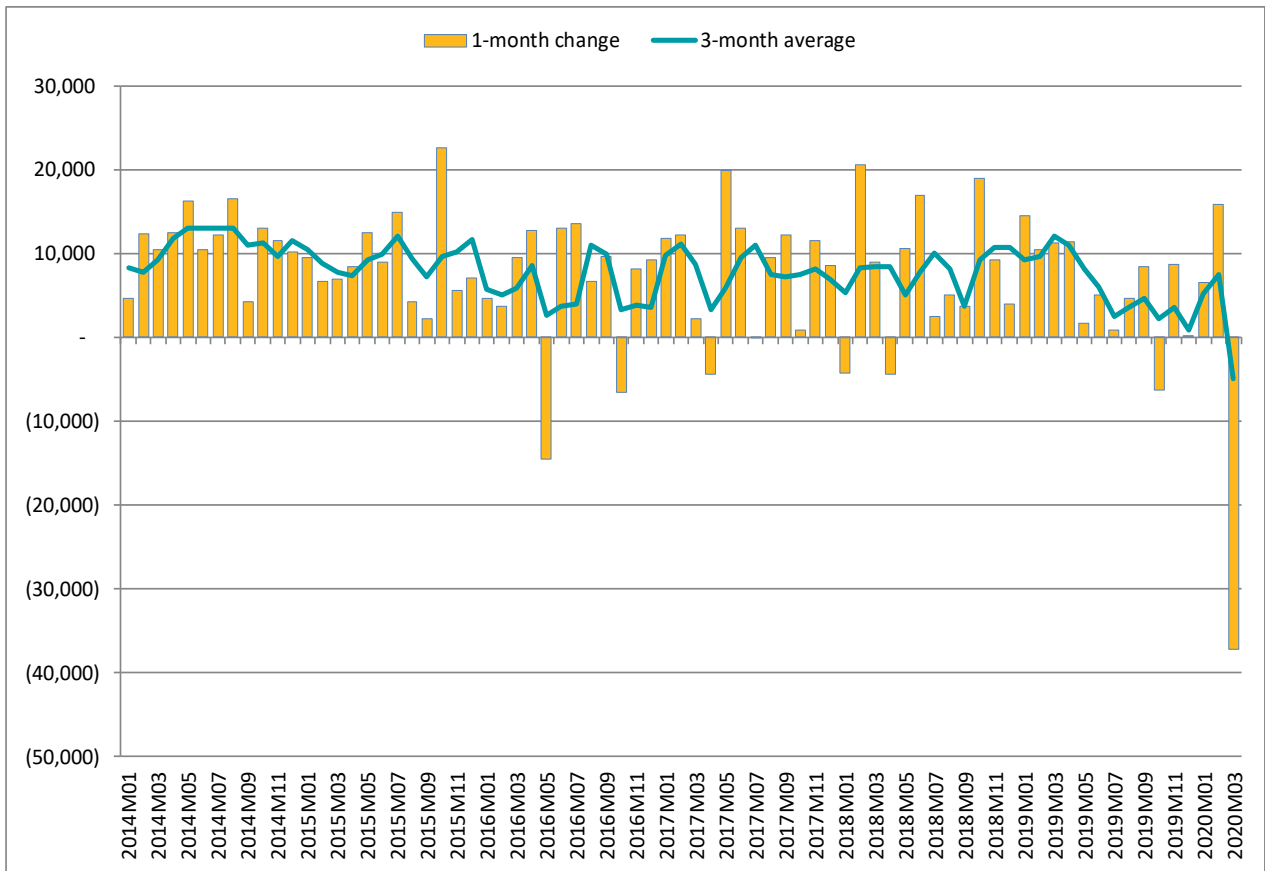
Source: NYSDOL and Bureau of Labor Statistics (BLS)

Data are preliminary and subject to change.

Note: SA = seasonally adjusted; NSA = non-seasonally adjusted

Chart 1 shows monthly private employment change and 3-month rolling average since January 2014.

**Chart 1. Monthly Private Employment Change and 3-month Average, January 2014 to March 2020**



Source: NYSDOL and BLS. Data are seasonally adjusted.

### Unemployment and Labor Force

(Numbers include all city residents, regardless of place of employment.)

New York City's unemployment rate rose from 3.4 percent to 4.4 percent from February to March 2020. The number of employed city residents fell by 129,300 from February to March, while the number of unemployed residents rose by 37,400 over the same period. The labor force participation rate fell from 60.4 percent to 59.0 percent between February and March. Table 2 summarizes city, state, and federal unemployment data.

**Table 2. Unemployment Rate**

	NYC	NYS	U.S.
March 2020	4.4%	4.5%	4.4%
February 2020	3.4%	3.7%	3.5%
March 2019	4.3%	4.0%	3.8%
<i>Change since December 2013*</i>	-3.9%	-2.6%	-2.3%

Source: NYSDOL and BLS. Data are preliminary and subject to change.

\*Percentage point change in unemployment rate since December 2013

## Sectoral Payroll Employment

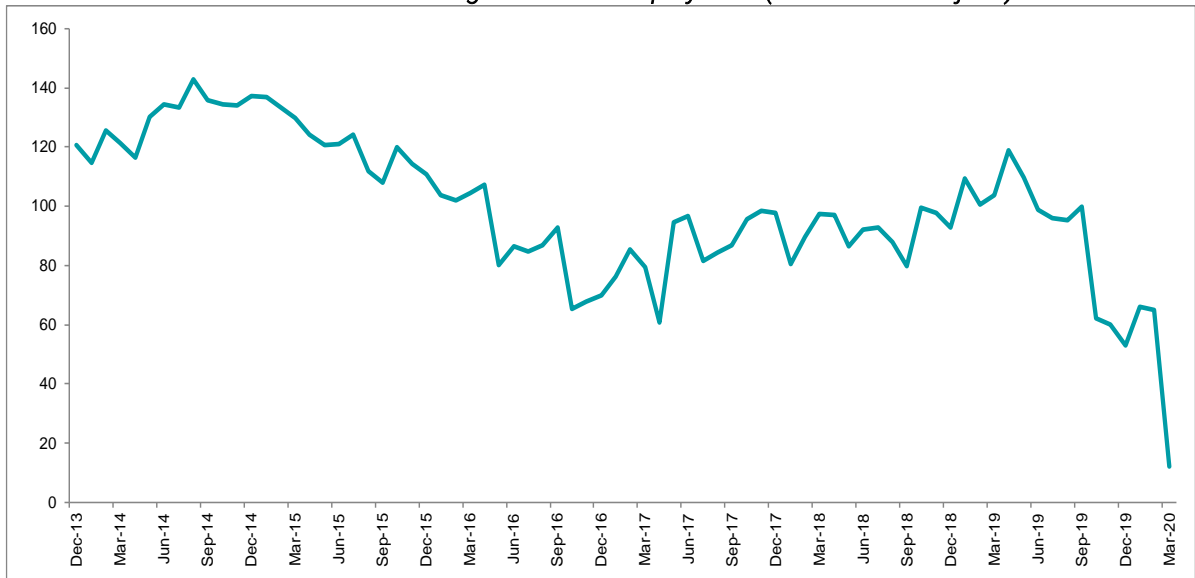
(Numbers include all persons employed in the city, regardless of place of residence.)

### 12 Months Ending March 2020

In the 12 months ending March 2020, the city's private sector payroll jobs grew by 12,200, an increase of 0.3 percent, slower than the national rate (1.0 percent) during the period.

Chart 2 reports the 12-month change in New York City private employment from December 2013 to March 2020.

*Chart 2. 12-Month Change in Private Employment (in thousands of jobs)*

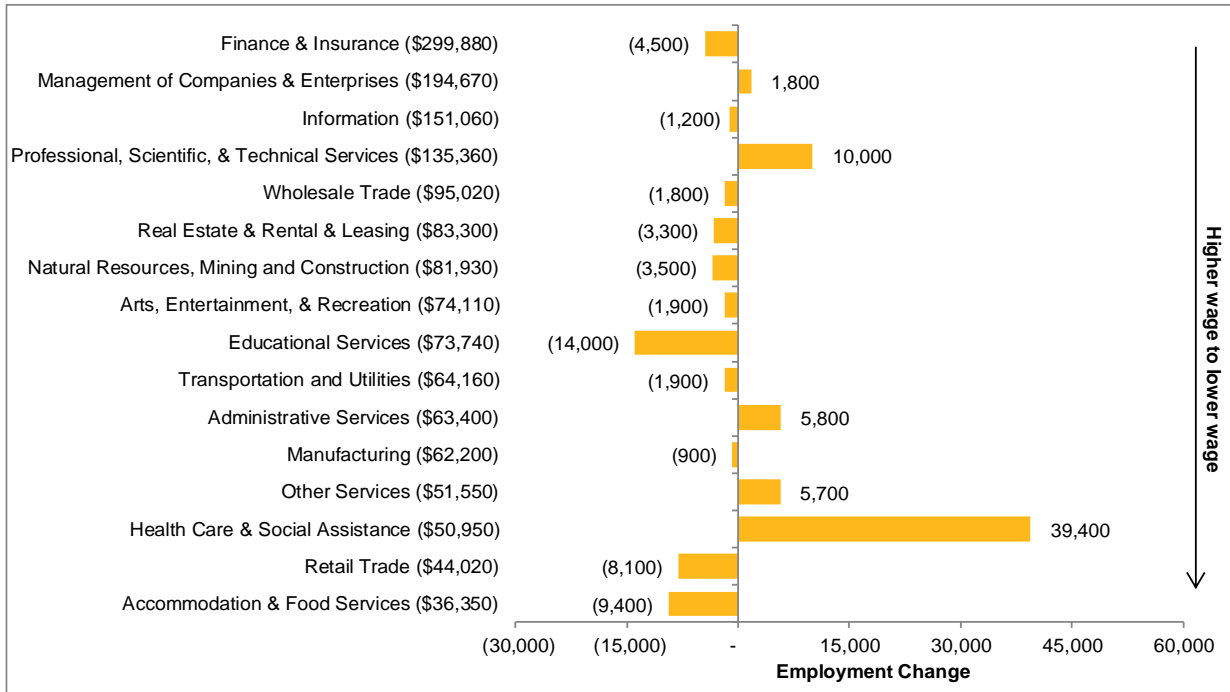


Source: NYSDOL, non-seasonally adjusted data

The strongest employment gains were in Health Care & Social Assistance (+39,400), Professional, Scientific, & Technical Services (+10,000), and Administrative and Support and Waste Management and Remediation Services (+5,800). Employment in the Educational Services sector declined by 14,000 jobs in the 12 months ending in March 2020. Accommodation & Food Services jobs fell by 9,400.

Chart 3 reports the sectors that contributed to employment gains in the year ending March 2020.

**Chart 3. Change in New York City Private Employment by Industry, 12 Months Ending March 2020, by 2018 Average Wages**



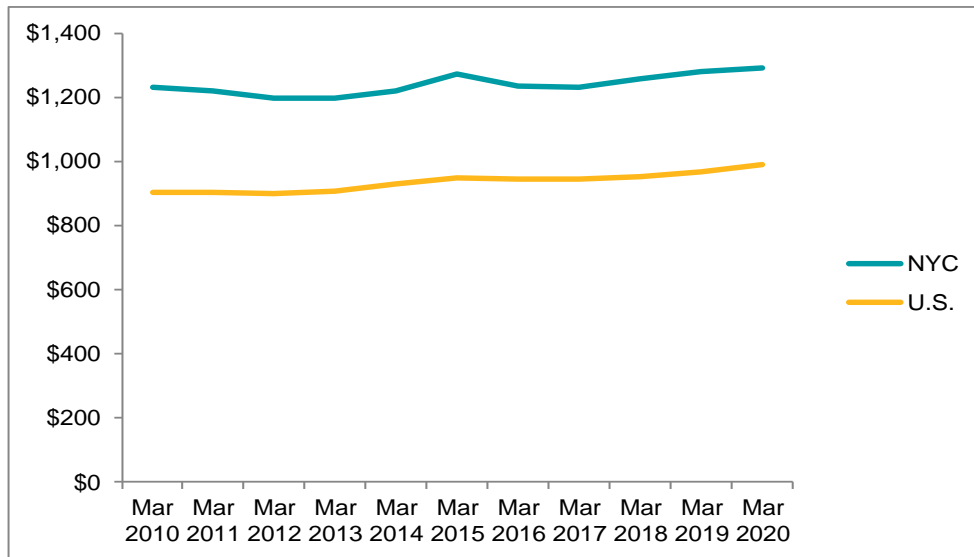
\*Other Services includes Repair and Maintenance, Personal and Laundry, Religious, Grantmaking, Civic and Professional Organizations.

Source: NYSDOL

Private sector employees in New York City earned \$38.18 per hour and worked 33.8 hours per week, on average, in March 2020. The resultant average weekly earnings figure of \$1,290 is up 0.9 percent from the inflation-adjusted average from one year prior.

Chart 4 shows the average weekly earnings of private sector employees in New York City.

**Chart 4. New York City Average Weekly Earnings, Private Sector**



Source: NYSDOL, BLS; Weekly earnings were inflated to current dollars using the US Bureau of Labor Statistics' non-seasonally-adjusted Consumer Price Index (CPI) for All Urban Consumers in the New York-Northern New Jersey-Long Island, NY-NJ-CT-PA metropolitan area, and US city average.

## Month-to-Month

Arts, Entertainment, & Recreation had the strongest growth between February 2020 and March 2020, adding 1,300 jobs. Educational Services added 600 jobs.

The Accommodation & Food Services sector experienced a decline of 12,400 jobs month-to-month. Administrative and Support and Waste Management and Remediation Services jobs fell by 4,800, and jobs in Health Care & Social Assistance fell by 4,000. This may not be an exhaustive list of sectors experiencing declines month-to-month.

Table 4 summarizes New York City private payroll employment data by industry.

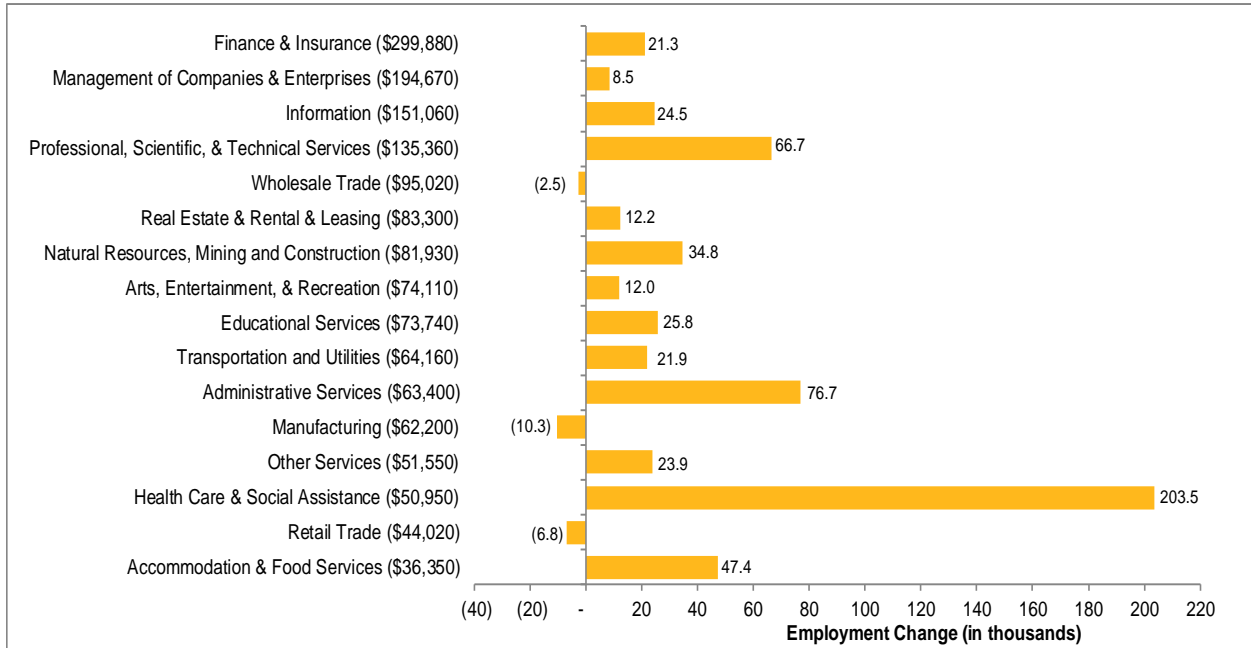
**Table 4. New York City Employment by Industry**

Industry	Employment					
	Mar-20	Change from Previous Month		Change Year-Over-Year		2018 Average Wage
		Actual	Percent	Actual	Percent	
<b>FIRE</b>	<b>474,800</b>	<b>(6,900)</b>	<b>-1.4%</b>	<b>(7,800)</b>	<b>-1.6%</b>	<b>\$238,120</b>
Finance and Insurance	341,600	(3,700)	-1.1%	(4,500)	-1.3%	\$299,880
Securities	177,300	(2,600)	-1.4%	(4,400)	-2.5%	\$398,660
Banking	104,800	(800)	-0.8%	(400)	-0.4%	\$202,240
Other	59,500	(300)	-0.5%	300	0.5%	\$161,070
Real Estate	133,200	(3,100)	-2.3%	(3,300)	-2.4%	\$83,300
<b>SERVICES</b>	<b>2,747,700</b>	<b>(24,100)</b>	<b>-0.9%</b>	<b>36,200</b>	<b>1.3%</b>	<b>\$78,290</b>
Information	208,100	(3,800)	-1.8%	(1,200)	-0.6%	\$151,060
Professional and Business	805,400	(5,600)	-0.7%	17,600	2.2%	\$116,050
Professional, Scientific & Technical	438,100	(900)	-0.2%	10,000	2.3%	\$135,360
Management of Companies & Enterprises	77,700	0	0.1%	1,800	2.4%	\$194,670
Administrative and Support	289,500	(4,800)	-1.6%	5,800	2.1%	\$63,400
Educational	249,400	600	0.2%	(14,000)	-5.1%	\$73,740
Health Care & Social Assistance	825,900	(4,000)	-0.5%	39,400	5.0%	\$50,950
Arts & Entertainment	92,800	1,300	1.4%	(1,900)	-2.0%	\$74,110
Accommodation & Food	365,500	(12,400)	-3.3%	(9,400)	-2.6%	\$36,350
Other	200,600	(200)	-0.1%	5,700	2.9%	\$51,550
<b>TRADE</b>	<b>478,600</b>	<b>(3,000)</b>	<b>-0.6%</b>	<b>(9,900)</b>	<b>-2.1%</b>	<b>\$58,080</b>
Retail	339,400	(3,000)	-0.9%	(8,100)	-2.4%	\$44,020
Wholesale	139,200	0	0.0%	(1,800)	-1.3%	\$95,020
<b>MANUFACTURING</b>	<b>66,700</b>	<b>(200)</b>	<b>-0.3%</b>	<b>(900)</b>	<b>-1.3%</b>	<b>\$62,200</b>
<b>TRANSPORTATION AND UTILITIES</b>	<b>146,000</b>	<b>(2,000)</b>	<b>-1.4%</b>	<b>(1,900)</b>	<b>-1.3%</b>	<b>\$64,160</b>
<b>NATURAL RESOURCES, MINING AND CONSTRUCTION</b>	<b>158,500</b>	<b>(1,200)</b>	<b>-0.7%</b>	<b>(3,500)</b>	<b>-2.2%</b>	<b>\$81,930</b>
<b>TOTAL PRIVATE</b>	<b>4,072,200</b>	<b>(37,300)</b>	<b>-0.9%</b>	<b>12,200</b>	<b>0.3%</b>	<b>\$94,690</b>
GOVERNMENT	595,500	200	0.0%	10,600	1.8%	\$79,070
<b>TOTAL (Private + Government) NYC</b>	<b>4,667,700</b>	<b>(37,000)</b>	<b>-0.8%</b>	<b>22,800</b>	<b>0.5</b>	<b>\$92,640</b>

Source: NYSDOL, seasonal adjustments for monthly data by New York City Office of Management and Budget (OMB); wage data from NYSDOL, Quarterly Census of Employment and Wages. Wages by sector, except Government, represent private sector wages only  
 Numbers may not add to totals due to rounding  
 Data are preliminary and subject to change

Chart 5 reports changes in private employment since December 2013 by industry, ranked by 2018 average wages.

**Chart 5. Change in NYC Private Employment by Industry, December 2013 to March 2020, Ranked by 2018 Average Wages**



\*Wages in parentheses represent the 2018 average wages for that sector. Sectors are sorted from highest to lowest.

Source: New York State Department of Labor (Current Employment Statistics and QCEW)



## About NYCEDC

NYCEDC is a mission-driven, nonprofit organization that creates shared prosperity across New York City. Our projects and initiatives are about serving New Yorkers. We are working with and for communities through every step of the economic development process—bringing emerging industries to the five boroughs; creating the spaces and facilities they need to thrive and create jobs; giving New Yorkers the tools and training to succeed in those jobs; and investing in the public infrastructure and neighborhood development projects that make this city a great place to live, work, and do business. Ultimately, we strive to create a sustainable and resilient future, with shared prosperity and opportunity for all New Yorkers.

Find us on Facebook, follow us on Twitter, or visit [edc.nyc](http://edc.nyc) to learn more about our projects and initiatives.

## About NYCEDC Economic Research & Policy

The Economic Research & Policy (ERP) group conducts research and analysis to provide insights into key policy issues. ERP analyzes the economic and fiscal impacts of a wide variety of New York City-specific projects, events and policies. The team publishes reports on economic conditions, performs industry research and analysis, and tracks economic trends for the Mayor, policymakers, and the public as a whole. ERP also advances thought leadership on inclusive and innovation-driven economic development.

For more information, visit [edc.nyc/NYCEconomics](http://edc.nyc/NYCEconomics)

Contact us at [NYCEconomics@edc.nyc](mailto:NYCEconomics@edc.nyc)