



January 2020

EMPLOYMENT ANALYSIS REPORT

The *Employment Analysis Report* provides a monthly update on the status of the New York City labor market through employment, unemployment, and wage statistics. It is drafted by the Economic Research & Policy group at NYCEDC.

Report Summary

- Private sector payroll employment rose by 7,800 in January 2020 (compared to December 2019). December employment change was revised upward, with private sector job increase now reported as 1,100 (originally reported as a loss of 300 jobs).
 - Three sectors added over 1,000 jobs, led by Health Care & Social Assistance, which added 10,100 jobs.
- Real average weekly earnings fell 1 percent year-over-year.
 - Real hourly earnings fell by 0.1 percent, while average weekly hours fell by 0.9 percent.
- The city's unemployment rate fell to 3.5 percent, while labor force participation remained at 60.4 percent.
 - Employed residents increased by 300 in January, while the number of unemployed residents fell by 5,300.
 - The city's labor force participation peaked at 60.9 percent in August 2013
- Private sector payroll jobs grew by 66,800 from January 2019 to January 2020, an increase of 1.7 percent. Private sector jobs increased by 1.6 percent nationwide.

Private and Total Payroll Employment

(Numbers include all persons employed in the city, regardless of place of residence)

Private sector payroll employment in New York City rose by 7,800 in January 2020 from a month earlier, according to employment data released today by the New York State Department of Labor (NYSDOL), analyzed by New York City Economic Development Corporation (NYCEDC)'s Economic Research and Policy division (data incorporate seasonal adjustments).¹ Government jobs in the city fell by 2,100, resulting in a net increase of 5,700 private and public sector payroll jobs.

Revised data for December 2019 indicate that private jobs rose by 1,100 and total jobs fell by 2,400 from the prior month. For the twelve months ending in January 2020, the city's private sector payroll jobs grew by 66,800, an increase of 1.7 percent. Employment at the national level grew 1.6 percent during the period.

Table 1 summarizes city, state, and federal payroll employment data (numbers include all persons employed in the city/state, regardless of place of residence).

Table 1. Employment Overview

	NYC		NYS		U.S.	
Total Nonfarm Jobs	4,690,200		9,843,200		152,271,000	
Total Private Sector Jobs	4,095,500		8,354,100		129,541,000	
Private Sector Changes						
Change from December 2019 (SA)	7,800	0.2%	30,500	0.4%	222,000	0.2%
Change from January 2019 (NSA)	66,800	1.7%	83,300	1.0%	2,023,000	1.6%
Change from December 2013 (SA)	582,800	16.6%	788,000	10.4%	13,988,000	12.1%

Source: NYSDOL and Bureau of Labor Statistics (BLS)

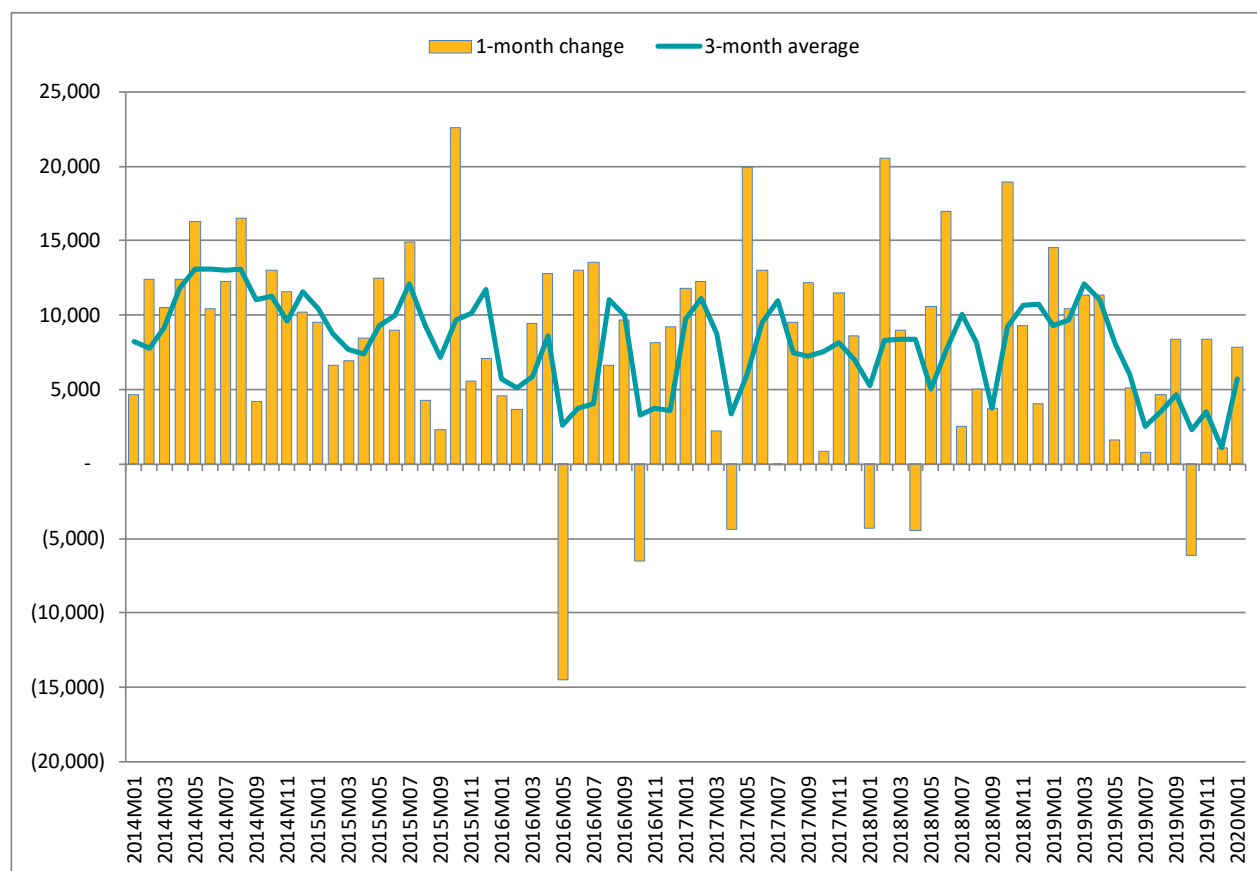
Data are preliminary and subject to change

Note: SA = seasonally adjusted; NSA = non-seasonally adjusted

¹ Every year, January employment data is released the second Thursday of March. This delay is the result of re-benchmarking, a process that revises data to reflect the more accurate estimates produced by a separate data source.

Chart 1 shows monthly private employment change and three-month rolling average since January 2014.

Chart 1. Monthly Private Employment Change and Three-Month Average, January 2014 to January 2020



Source: NYSDOL and BLS. Data are seasonally adjusted.

Unemployment and Labor Force

(Numbers include all city residents, regardless of place of employment).

New York City's unemployment rate fell from 3.6 percent to 3.5 percent from December to January 2020. The number of employed city residents rose by 300 from December to January, while the number of unemployed residents fell by 5,300 over the same period. The labor force participation rate stayed flat at 60.4 percent between December and January. Table 2 summarizes city, state, and federal unemployment data.

Table 2. Unemployment Rate

	NYC	NYS	U.S.
January 2020	3.5%	3.8%	3.6%
December 2019	3.6%	3.9%	3.5%
January 2019	4.3%	4.0%	4.0%
<i>Change since December 2013*</i>	<i>-4.8%</i>	<i>-3.3%</i>	<i>-3.1%</i>

Source: NYSDOL and BLS. Data are preliminary and subject to change.

*Percentage point change in unemployment rate since December 2013

Sectoral Payroll Employment

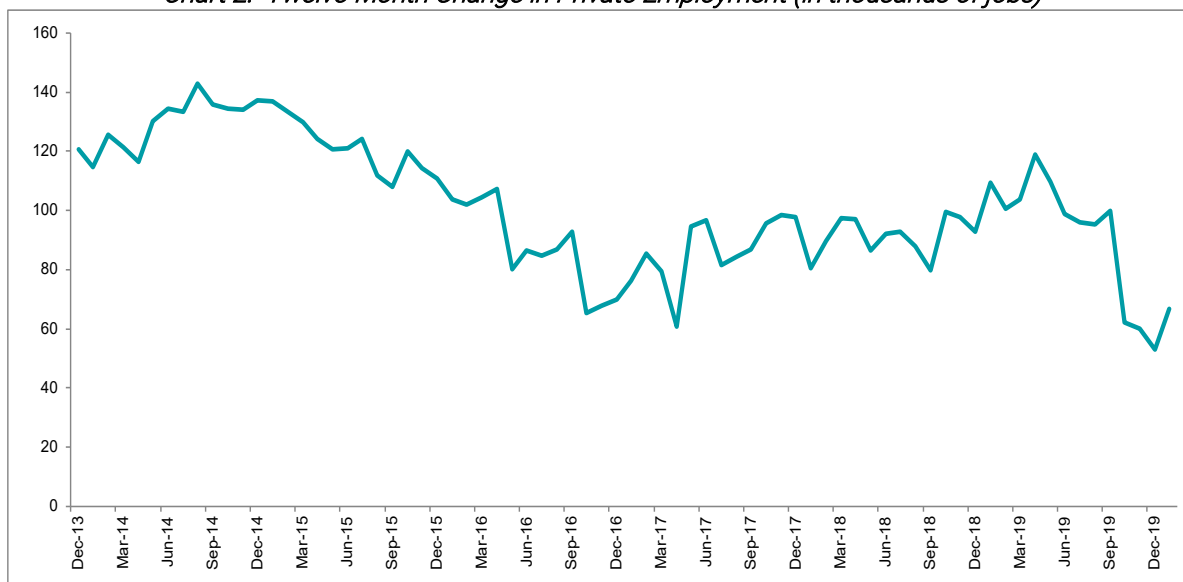
(Numbers include all persons employed in the city, regardless of place of residence).

Twelve Months Ending January 2020

In the 12 months ending January 2020, the city's private sector payroll jobs grew by 66,800, an increase of 1.7 percent, faster than the national rate (1.6 percent) during the period.

Chart 2 reports the 12-month change in New York City private employment from December 2013 to January 2020.

Chart 2. Twelve-Month Change in Private Employment (in thousands of jobs)

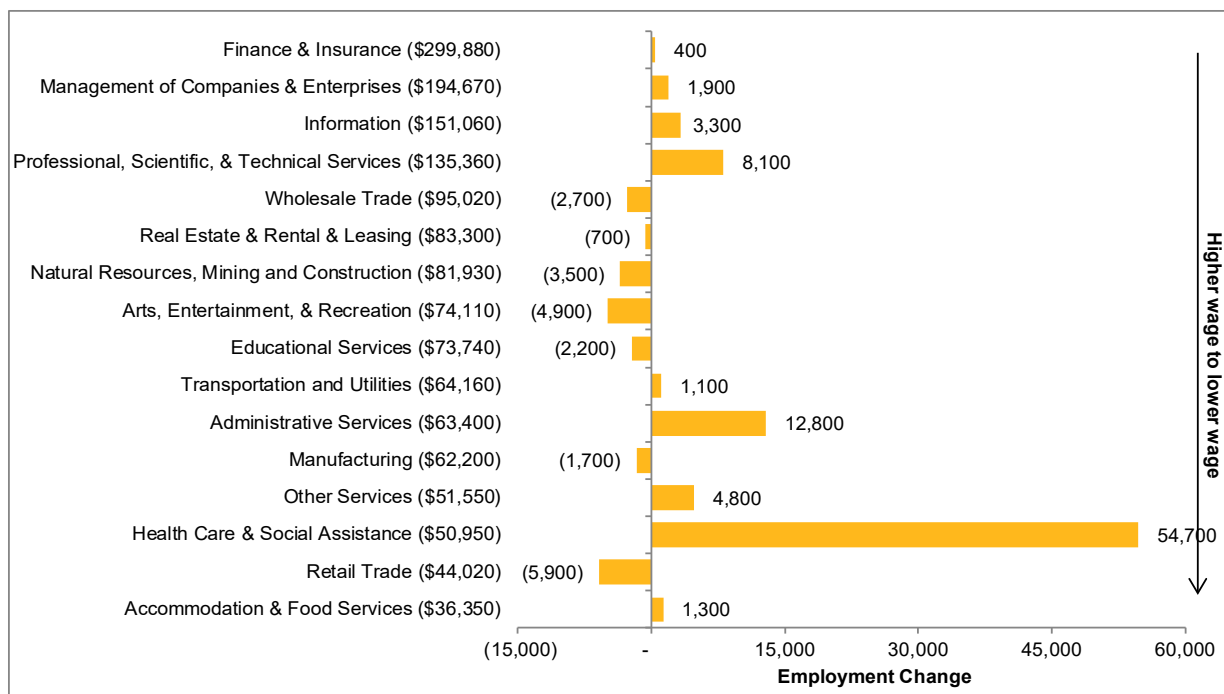


Source: NYSDOL, non-seasonally adjusted data

The strongest employment gains were in Health Care & Social Assistance (+54,700), Administrative and Support and Waste Management and Remediation Services (+12,800), and Professional, Scientific & Technical Services (+8,100). Employment in the Retail Trade sector declined by 5,900 jobs in the twelve months ending in January 2020. Arts, Entertainment & Recreation jobs fell by 4,900.

Chart 3 reports the sectors that contributed to employment gains in the year ending January 2020.

*Chart 3. Change in New York City Private Employment by Industry,
12 Months Ending January 2020, by 2018 Average Wages*



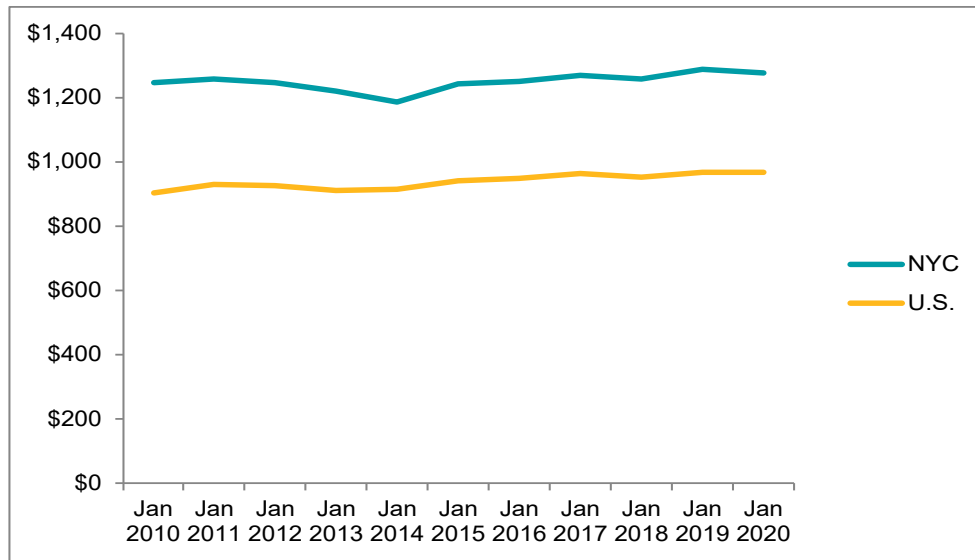
*Other Services includes Repair and Maintenance, Personal and Laundry, Religious, Grantmaking, Civic and Professional Organizations

Source: NYSDOL

Private sector employees in New York City earned \$38.30 per hour and worked 33.3 hours per week, on average, in January 2020. The resultant average weekly earnings figure of \$1,275 is up -1.0 percent from the inflation-adjusted average from one year prior.

Chart 4 shows the average weekly earnings of private sector employees in New York City.

Chart 4. New York City Average Weekly Earnings, Private Sector



Source: NYSDOL, BLS; Weekly earnings were inflated to current dollars using the US Bureau of Labor Statistics' non-seasonally adjusted Consumer Price Index (CPI) for all urban consumers in the New York-Northern New Jersey-Long Island, NY-NJ-CT-PA metropolitan area, and US city average.

Month-to-Month

Health Care & Social Assistance had the strongest growth between December 2019 and January 2020, adding 10,100 jobs. Other Services added 3,800 jobs, and Administrative and Support and Waste Management and Remediation Services added 3,300. This may not be an exhaustive list of sectors experiencing gains month-to-month.

The Arts, Entertainment & Recreation sector experienced a decline of 3,000 jobs month-to-month. Information Services jobs fell by 2,100, and jobs in Finance & Insurance fell by 1,500. This may not be an exhaustive list of sectors experiencing declines month-to-month.

Table 4 summarizes New York City private payroll employment data by industry.

Table 4. New York City Employment by Industry

Industry	Employment					
	Jan-20	Change from Previous Month		Change Year-Over-Year		2018 Average Wage
		Actual	Percent	Actual	Percent	
FIRE	480,800	(1,700)	-0.4%	(300)	-0.1%	\$238,120
Finance and Insurance	346,000	(1,500)	-0.4%	400	0.1%	\$299,880
Securities	180,700	(1,400)	-0.8%	(1,200)	-0.7%	\$398,660
Banking	105,700	0	0.0%	900	0.9%	\$202,240
Other	59,600	(100)	-0.1%	700	1.2%	\$161,070
Real Estate	134,800	(200)	-0.2%	(700)	-0.5%	\$83,300
SERVICES	2,761,200	10,800	0.4%	79,800	3.0%	\$78,290
Information	210,500	(2,100)	-1.0%	3,300	1.6%	\$151,060
Professional and Business	803,900	3,100	0.4%	22,800	3.0%	\$116,050
Professional, Scientific & Technical	433,000	(300)	-0.1%	8,100	1.9%	\$135,360
Management of Companies & Enterprises	77,000	0	0.0%	1,900	2.6%	\$194,670
Administrative and Support	293,900	3,300	1.2%	12,800	4.7%	\$63,400
Educational	252,200	(1,200)	-0.5%	(2,200)	-0.9%	\$73,740
Health Care & Social Assistance	829,800	10,100	1.2%	54,700	7.1%	\$50,950
Arts & Entertainment	91,300	(3,000)	-3.2%	(4,900)	-5.4%	\$74,110
Accommodation & Food	374,600	200	0.1%	1,300	0.4%	\$36,350
Other	198,700	3,800	1.9%	4,800	2.5%	\$51,550
TRADE	481,600	(800)	-0.2%	(8,600)	-1.8%	\$58,080
Retail	343,700	(1,000)	-0.3%	(5,900)	-1.7%	\$44,020
Wholesale	137,900	200	0.2%	(2,700)	-1.9%	\$95,020
MANUFACTURING	66,700	(500)	-0.7%	(1,700)	-2.5%	\$62,200
TRANSPORTATION AND UTILITIES	148,600	0	0.0%	1,100	0.7%	\$64,160
NATURAL RESOURCES, MINING AND CONSTRUCTION	156,600	(100)	0.0%	(3,500)	-2.2%	\$81,930
TOTAL PRIVATE	4,095,500	7,800	0.2%	66,800	1.7%	\$94,690
GOVERNMENT	594,700	(2,100)	-0.4%	9,900	1.7%	\$79,070
TOTAL (Private + Government) NYC	4,690,200	5,700	0.1%	76,700	1.7	\$92,640

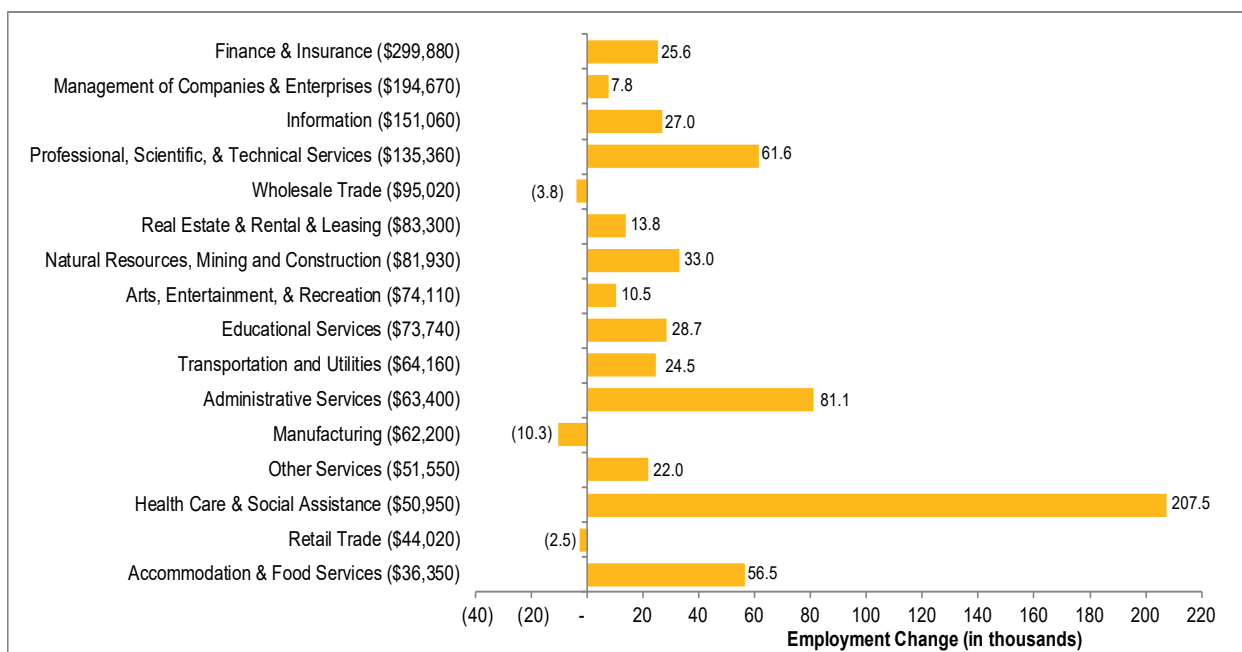
Source: NYSDOL, seasonal adjustments for monthly data by New York City Office of Management and Budget (OMB); wage data from NYSDOL, Quarterly Census of Employment and Wages. Wages by sector, except Government, represent private sector wages only

Numbers may not add to totals due to rounding

Data are preliminary and subject to change

Chart 5 reports changes in private employment since December 2013 by industry, ranked by 2018 average wages.

Chart 5. Change in NYC Private Employment by Industry, December 2013 to January 2020, Ranked by 2018 Average Wages



*Wages in parentheses represent the 2018 average wages for that sector. Sectors are sorted from highest to lowest.

Source: New York State Department of Labor (Current Employment Statistics and QCEW)

About NYCEDC

NYCEDC is a mission-driven, nonprofit organization that creates shared prosperity across New York City. Our projects and initiatives are about serving New Yorkers. We are working with and for communities through every step of the economic development process—bringing emerging industries to the five boroughs; creating the spaces and facilities they need to thrive and create jobs; giving New Yorkers the tools and training to succeed in those jobs; and investing in the public infrastructure and neighborhood development projects that make this city a great place to live, work, and do business. Ultimately, we strive to create a sustainable and resilient future, with shared prosperity and opportunity for all New Yorkers.

Find us on Facebook, follow us on Twitter, or visit edc.nyc to learn more about our projects and initiatives.

About NYCEDC Economic Research & Policy

The Economic Research & Policy (ERP) group conducts research and analysis to provide insights into key policy issues. ERP analyzes the economic and fiscal impacts of a wide variety of New York City-specific projects, events, and policies. The team publishes reports on economic conditions, performs industry research and analysis, and tracks economic trends for the mayor, policymakers, and the public as a whole. ERP also advances thought leadership on inclusive and innovation-driven economic development.

For more information, visit [**edc.nyc/NYCeconomics**](http://edc.nyc/NYCeconomics)

Contact us at [**NYCeconomics@edc.nyc**](mailto:NYCeconomics@edc.nyc)