



NYC / EDC

**October
2019**

EMPLOYMENT ANALYSIS REPORT

The *Employment Analysis Report* provides a monthly update on the status of the New York City labor market through employment, unemployment, and wage statistics. It is drafted by the Economic Research & Policy group at NYCEDC.

Report Summary

Private sector payroll employment fell by **9,100** in October 2019 (compared to September 2019). September employment change was revised upward, with the private sector job increase now reported as **17,000** (originally reported as an increase of 12,600 jobs).

- **8** sectors lost over **1,000** jobs, including Natural Resources, Mining and Construction, which lost **3,000** jobs
-

Real average weekly earnings increased **0.5** percent year-over-year.

- Real hourly earnings increased **2.0** percent, while average weekly hours fell by **1.5** percent
-

The city's unemployment rate remained at **4.1** percent, while labor force participation increased to **60.6** percent (compared to 60.5 percent in September 2019).

- Employed residents increased by **1,900** in October, while the number of unemployed residents fell by **800**
 - The city's labor force participation rate peaked at **60.9** percent from November 2018 to March 2019
-

Private sector payroll jobs grew by **55,100** from October 2018 to October 2019, an increase of **1.4** percent. Private sector jobs increased by **1.5** percent nationwide.

Private and Total Payroll Employment

(Numbers include all persons employed in the city, regardless of place of residence.)

Private sector payroll employment in New York City fell by 9,100 in October 2019 from a month earlier, according to employment data released today by the New York State Department of Labor (NYSDOL), analyzed by New York City Economic Development Corporation's (NYCEDC) Economic Research & Policy group (data incorporate seasonal adjustments). Government jobs in the city fell by 700, resulting in a net decrease of 9,900 private and public sector payroll jobs.

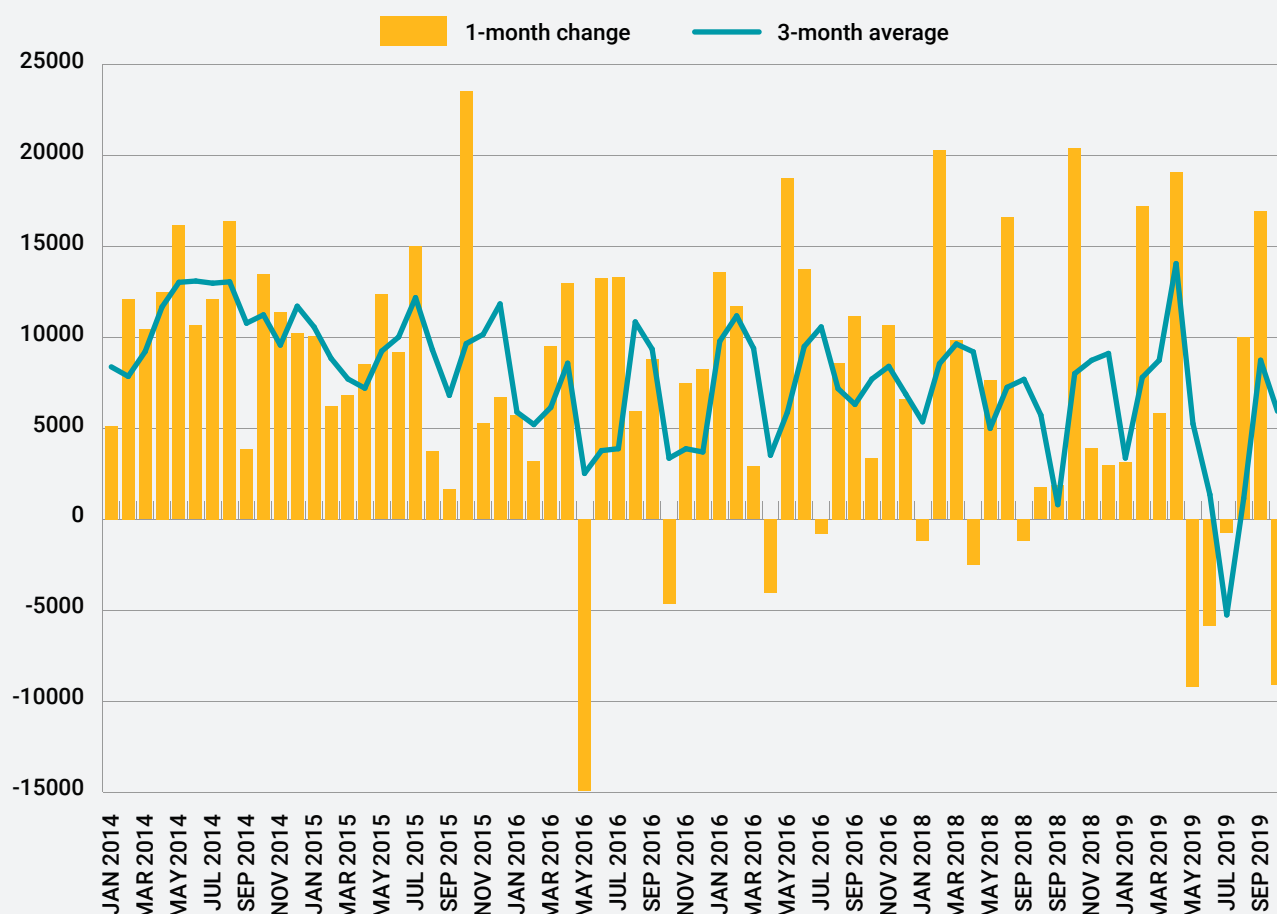
Revised data for September 2019 indicate that private jobs rose by 17,000 and total jobs rose by 19,500 from the prior month. For the 12 months ending in October 2019, the city's private sector payroll jobs grew by 55,100, an increase of 1.4 percent. Employment at the national level grew 1.5 percent during the period.

Table 1 summarizes city, state, and federal payroll employment data. (Numbers include all persons employed in the city/state, regardless of place of residence.)

Table 1. Employment Overview						
	NYC		NYS		US	
Total Nonfarm Jobs	4,647,900		9,804,000		151,945,000	
Total Private Sector Jobs	4,049,900		8,305,800		123,306,000	
Private Sector Changes						
Change from September 2019 (SA)	(9,100)	-0.2%	13,300	0.2%	131,000	0.1%
Change from October 2018 (NSA)	55,100	1.4%	95,800	1.2%	1,900,400	1.5%
Change from December 2013 (SA)	537,300	15.3%	739,800	9.8%	13,736,000	11.9%
Source: NYSDOL and Bureau of Labor Statistics (BLS) Data are preliminary and subject to change Note: SA = seasonally adjusted; NSA = non-seasonally adjusted						

Chart 1 shows monthly private employment change and 3-month rolling average since January 2014.

Chart 1. Monthly Private Employment Change and 3-month Average, January 2014 to October 2019



Source: NYSDOL and BLS. Data are seasonally adjusted.

Unemployment and Labor Force

(Numbers include all city residents, regardless of place of employment.)

New York City's unemployment rate held steady at 4.1 percent from September to October 2019. The number of employed city residents rose by 1,900 from September to October, while the number of unemployed residents fell by 800 over the same period. The labor force participation rate rose from 60.5 percent to 60.6 percent between September and October. Table 2 summarizes city, state, and federal unemployment data.

Table 2. Unemployment Rate

	NYC	NYS	US
October 2019	4.1%	4.0%	3.6%
September 2019	4.1%	3.9%	3.5%
October 2018	4.0%	3.8%	3.8%
Change since December 2013*	-4.2%	-3.1%	-3.1%

Source: NYSDOL and BLS. Data are preliminary and subject to change

* Percentage point change in unemployment rate since December 2013

Table 3 summarizes unemployment data for the population ages 25+ by educational attainment. A 12-month average is provided because the data are not seasonally adjusted.

Table 3. Unemployment rate, 12 months ending October 2019

Educational attainment	NYC	US
Less than a High School Diploma	8.0%	5.4%
High School Graduates	5.7%	3.7%
Some College or Associate's Degree	2.7%	3.1%
Bachelor's Degree or Higher	2.2%	2.1%
Total	3.6%	3.0%

Source: BLS, Current Population Survey

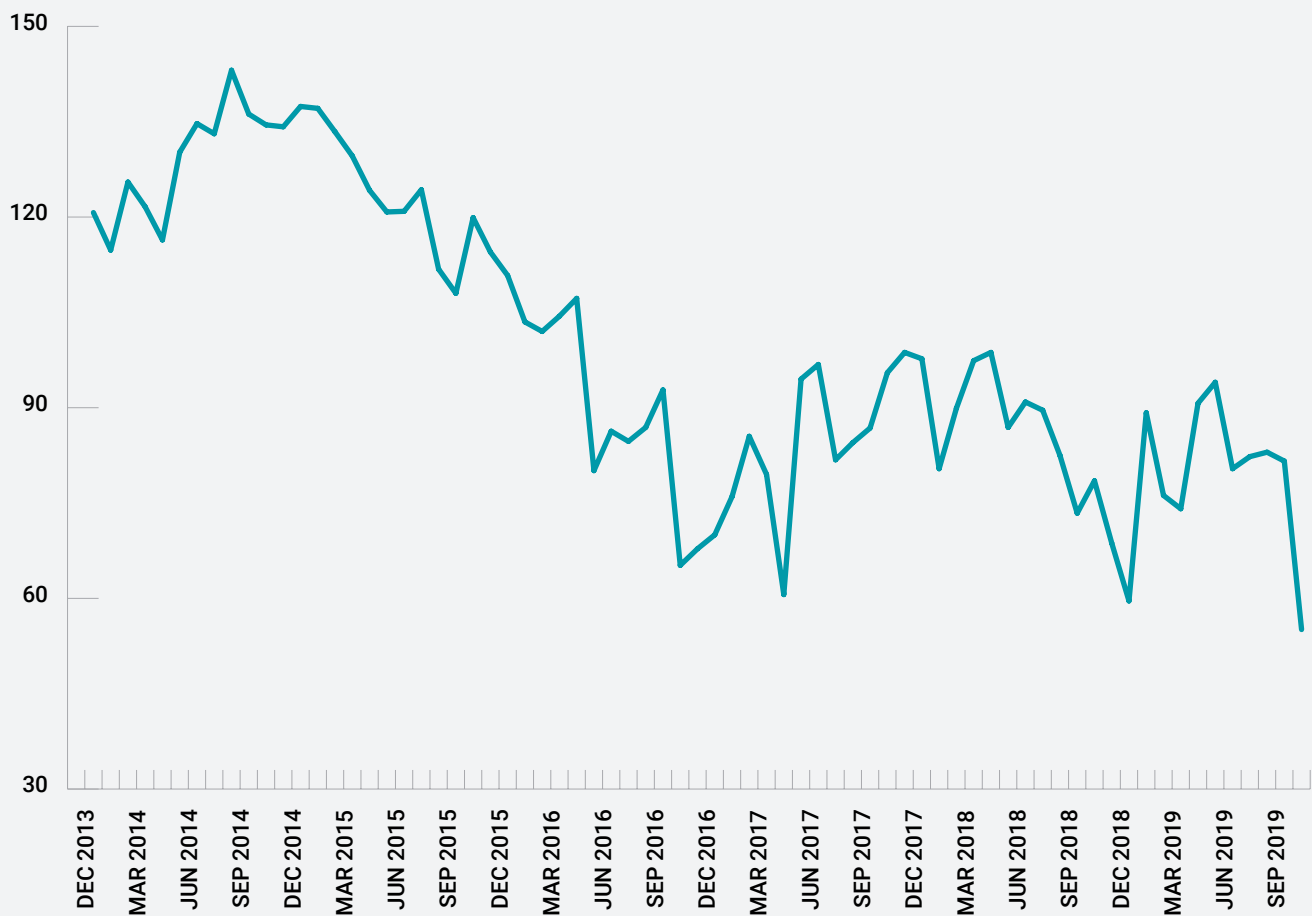
Sectoral Payroll Employment

(Numbers include all persons employed in the city, regardless of place of residence.)

12 Months Ending October 2019

In the 12 months ending October 2019, the city's private sector payroll jobs grew by 55,100, an increase of 1.4 percent, slower than the national rate (1.5 percent) during the period. Chart 2 reports the 12-month change in New York City private employment from December 2013 to October 2019.

Chart 2. 12-month change in private employment (in thousands of jobs)

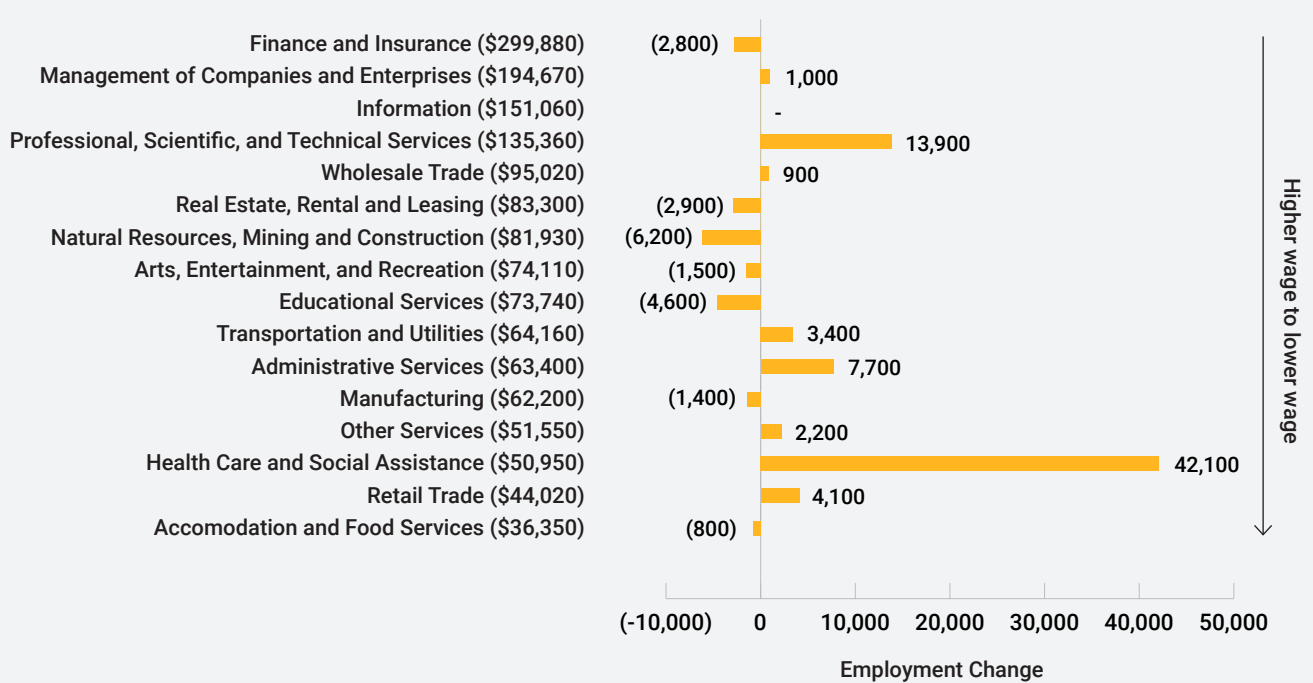


Source: NYSDOL, non-seasonally adjusted data

The strongest employment gains were in Health Care and Social Assistance (+42,100), Professional, Scientific, and Technical Services (+13,900), and Administrative and Support and Waste Management and Remediation Services (+7,700). Employment in the Natural Resources, Mining and Construction sector declined by 6,200 jobs in the 12 months ending in October 2019. Educational Services jobs fell by 4,600.

Chart 3 reports the sectors that contributed to employment gains in the year ending October 2019.

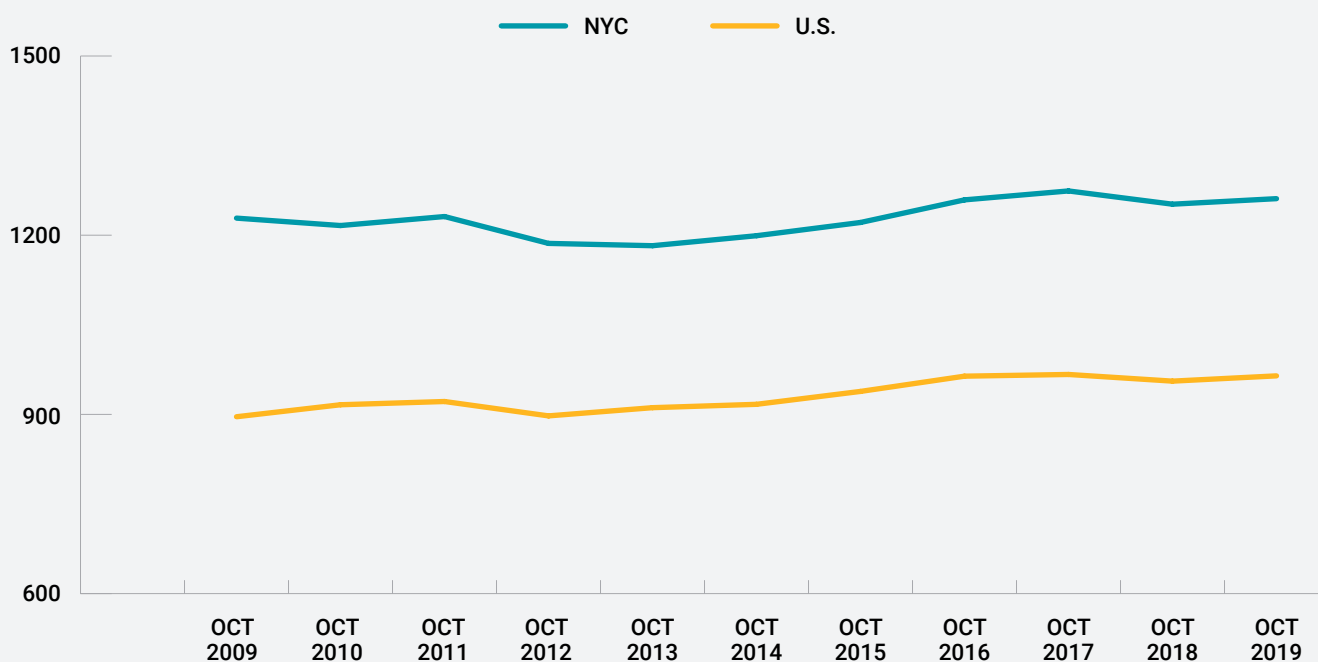
Chart 3. Change in New York City private employment by industry, 12 months ending October 2019, by 2018 average wages



* Other Services includes Repair and Maintenance, Personal and Laundry, Religious, Grantmaking, Civic and Professional Organizations

Private sector employees in New York City earned \$37.67 per hour and worked 33.4 hours per week, on average, in October 2019. The resultant average weekly earnings figure of \$1,258 is up 0.5 percent from the inflation-adjusted average from one year prior. Chart 4 shows the average weekly earnings of private sector employees in New York City.

Chart 4. New York City average weekly earnings, private sector



Source: NYSDOL, BLS; Weekly earnings were inflated to current dollars using the U.S. Bureau of Labor Statistics' non-seasonally adjusted Consumer Price Index (CPI) for All Urban Consumers in the New York-Northern New Jersey-Long Island, NY-NJ-CT-PA metropolitan area, and U.S. city average.

Month-to-Month

Transportation, Warehousing and Utilities had the strongest growth between September 2019 and October 2019, adding 2,700 jobs. Educational Services added 1,700 jobs, and Other Services added 1,200. This is not an exhaustive list of sectors experiencing gains month-to-month.

The Natural Resources, Mining and Construction sector experienced a decline of 3,000 jobs month-to-month. Information Services fell by 2,700 jobs, and Arts, Entertainment, and Recreation fell by 2,300 jobs. This is not an exhaustive list of sectors experiencing declines month-to-month. Table 4 summarizes New York City private payroll employment data by industry.

Table 4. New York City employment by industry

Industry	Employment					
	Oct 2019	Change from Previous Month		Change Year-Over-Year		2018 Average Wage
		Actual	Percent	Actual	Percent	
Fire	469,900	(1,900)	-0.4%	(5,700)	-1.2%	\$238,120
Finance and Insurance	338,700	(400)	-0.1%	(2,800)	-0.8%	\$299,880
Securities	177,900	(1,500)	-0.9%	(3,700)	-2.0%	\$398,660
Banking	102,300	1,200	1.2%	1,500	1.5%	\$202,240
Other	58,400	0	0.0%	(600)	-1.0%	\$161,070
Real Estate	131,200	(1,500)	-1.1%	(2,900)	-2.2%	\$83,300
Services	2,716,300	(4,900)	-0.2%	60,000	2.2%	\$78,290
Information	206,400	(2,700)	-1.3%	0	0.0%	\$151,060
Professional and Business	787,200	(600)	-0.1%	22,600	2.9%	\$116,050
Professional, Scientific, and Technical	435,100	300	0.1%	13,900	3.3%	\$135,360
Management of Companies, and Enterprises	73,600	(500)	-0.7%	1,000	1.4%	\$194,670
Administrative and Support	278,500	(300)	-0.1%	7,700	2.8%	\$63,400
Educational	253,100	1,700	0.7%	(4,600)	-1.7%	\$73,740
Health Care and Social Assistance	810,200	(1,200)	-0.2%	42,100	5.5%	\$50,950
Arts and Entertainment	96,400	(2,300)	-2.3%	(1,500)	-1.5%	\$74,110
Accommodation and Food	366,600	(1,000)	-0.3%	(800)	-0.2%	\$36,350
Other	196,300	1,200	0.6%	2,200	1.1%	\$51,550
Trade	496,700	(2,400)	-0.5%	5,000	1.0%	\$58,080
Retail	357,800	(1,300)	-0.4%	4,100	1.2%	\$44,020
Wholesale	138,800	(1,100)	-0.8%	900	0.6%	\$95,020
Manufacturing	67,800	300	0.4%	(1,400)	-2.0%	\$62,200
Transportation and Utilities	146,100	2,700	1.9%	3,400	2.4%	\$64,160
Natural Resources, Mining, and Construction	153,200	(3,000)	-1.9%	(6,200)	-3.8%	\$81,930
TOTAL PRIVATE	4,049,900	(9,100)	-0.2%	55,100	1.4%	\$94,690
GOVERNMENT	598,000	(700)	-0.1%	5,800	1.0%	\$79,070
TOTAL (Private + Government) NYC	4,647,900	(9,900)	-0.2%	60,900	1.3	\$92,640

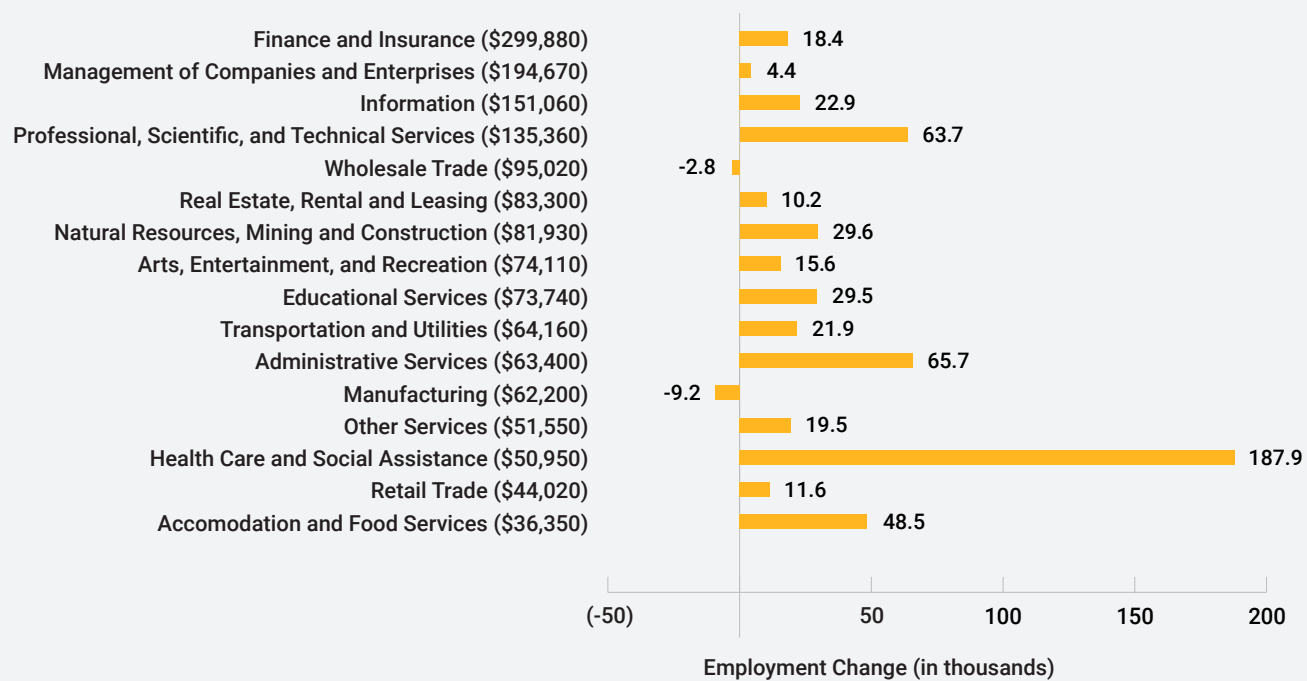
Source: NYSDOL, seasonal adjustments for monthly data by New York City Office of Management and Budget (OMB); wage data from NYSDOL, Quarterly Census of Employment and Wages. Wages by sector, except Government, represent private sector wages only

Numbers may not add to totals due to rounding

Data are preliminary and subject to change

Chart 5 reports changes in private employment since December 2013 by industry, ranked by 2018 average wages.

Chart 5. Change in New York City private employment by industry, December 2018 to October 2019, ranked by average wages



* Wages in parentheses represent the 2018 average wages for that sector. Sectors are sorted from highest to lowest.
Source: New York State Department of Labor (Current Employment Statistics and QCEW)

About NYCEDC

New York City Economic Development Corporation is the city's primary vehicle for promoting economic growth in each of the five boroughs. NYCEDC's mission is to stimulate growth through expansion and redevelopment programs that encourage investment, generate prosperity, and strengthen the city's competitive position. NYCEDC serves as an advocate to the business community by building relationships with companies that allow them to take advantage of New York City's many opportunities.

Find us on Facebook, follow us on Twitter, or visit edc.nyc to learn more about our projects and initiatives.

The Economic Research & Policy Group at NYCEDC

The Economic Research & Policy (ERP) group performs industry and economic research to provide insights into key policy issues, conducts economic analysis of New York City projects, and tracks economic trends for policymakers and the public as a whole. ERP also supports NYCEDC in the evaluation of projects by setting up tools to assess, measure, and report on ideation and results. The team advances high-impact thought leadership on inclusive and innovation-driven economic development.

For more information, visit edc.nyc/insights
Contact us at NYCEconomics@edc.nyc