

# RAISE SHORELINES CITYWIDE

## Travis Avenue Road Raising Project

Public Forum

September 24, 2019



# ABOUT THE RAISE SHORELINES PROGRAM

- Collaboration between NYCEDC and the Mayor's Office of Resiliency (MOR)
- In 2015, the City produced the Raise Shorelines Citywide Study to address vulnerability of New York City's shorelines due to long-term sea level rise
  - Evaluated over 600 miles of NYC shorelines to identify priority locations
  - Funded through HUD Community Development Block Grant Disaster Recovery (CDBG-DR) funds
- Travis Avenue road raising project is one of the first projects to be implemented under the Raise Shorelines Program
  - New York City Capital will fund the construction

Main Creek

TRAVIS



# PROJECT SITE: TRAVIS AVENUE





# EXISTING CONDITIONS



View of roadway looking west



# EXISTING CONDITIONS



View of roadway looking east

## RAIN EVENT CONDITION (1/20/2018 Youtube Video)



Drivers maneuver around flooding on Staten Island's Travis Avenue

442 views • Published on Jan 30, 2018

0 0 SHARE SAVE ...



# ABOUT THE PROJECT

- Improvements will protect Travis Avenue from future sea level rise (2050s) and regular flooding (twice a day) in the future
- 900-foot area of Travis Avenue that floods frequently will be raised approximately three feet on either side of the existing bridge that spans the Main Creek
- Upgrades to watermains
- Installation of hydraulic culverts beneath the road to enhance wetland hydrology and connectivity
- Two wildlife eco-passages to facilitate safe passage for terrapins, turtles and other wildlife

Main Creek

TRAVIS



# TRAVIS AVENUE ROAD CLOSURE

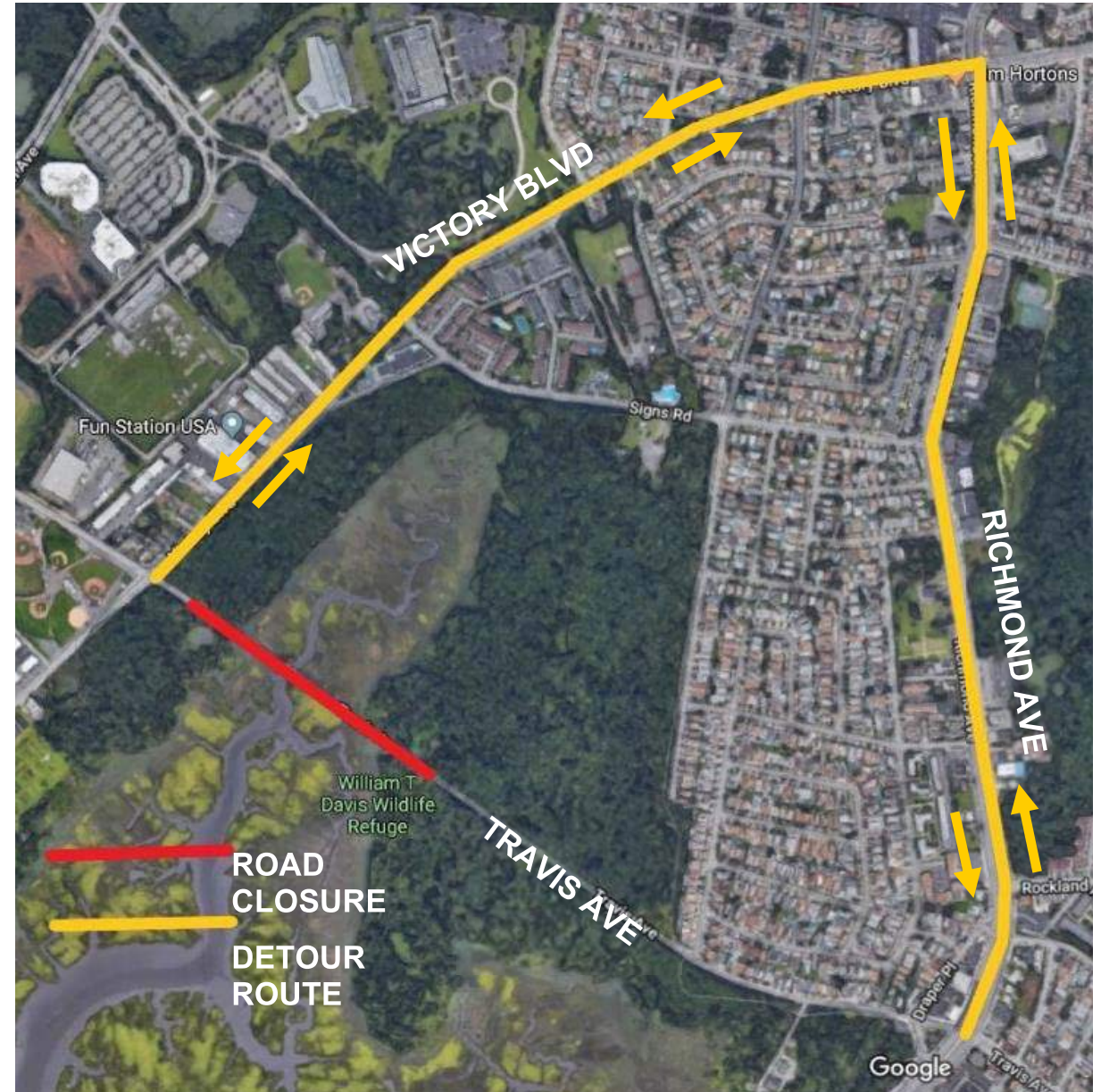
- Construction will require the full closure of Travis Avenue between Victory Boulevard and Mulberry Avenue
- Road closure will be in place for approximately 9-12 months
- Full closure of road is required for utility replacement, and allows construction to happen quickest
- Work will begin in Q1 2020 and anticipated completion is Q1 2021





# PROPOSED DETOUR

- Motorist detour via Victory Boulevard and Richmond Avenue
- Shared-use path and sidewalks on Travis Avenue between Mulberry Avenue and Richmond Avenue will remain open
- Road closure will not impact pedestrian/bike paths or bus stops/routes





# TRAFFIC STUDY

September 2018

- Collected peak and off-peak traffic data and turning movement counts
- Verified signal timings and travel times through site visits
- Analyzed existing traffic volumes, intersection capacities and level of service to recommend detour alternatives

Main Creek

TRAIL



# TRAFFIC STUDY RESULTS

- Proposed detour via Victory Boulevard and Richmond Avenue reviewed by and coordinated with NYCDOT
- Most intersections will have minimal effects
- The intersections of Richmond Avenue with Victory Boulevard and Signs Road will experience some delays during construction
- Improvement measures will be implemented at key intersections to minimize effects



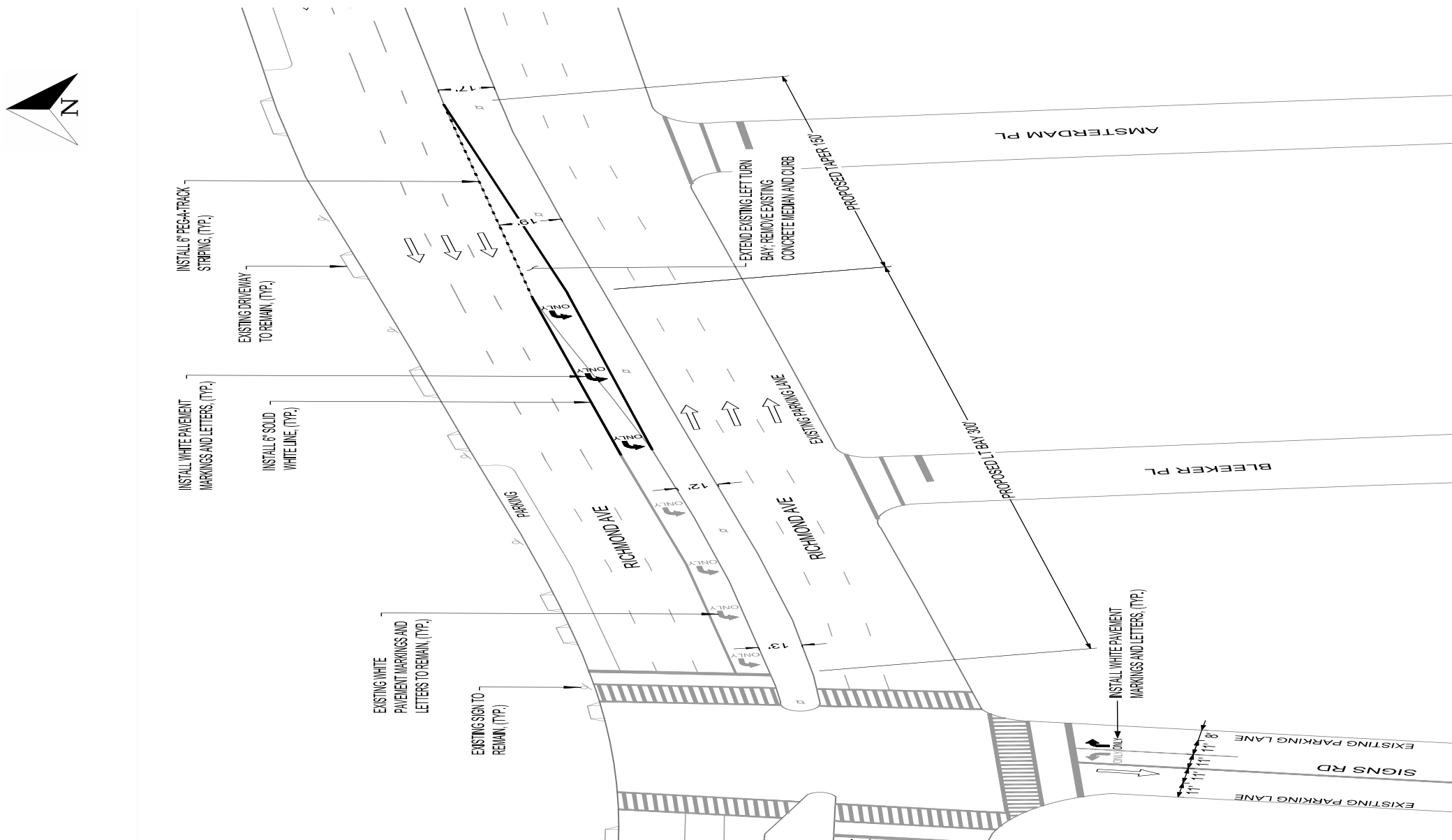
# CONSTRUCTION TRAFFIC MANAGEMENT

Implement improvement measures prior to construction to improve the delay at Richmond Avenue and Signs Road

- Permanently extend northbound left turn lane on Richmond Avenue at Signs Road to 450 feet to improve delays
- Implement 150-foot parking restriction on southbound Richmond Avenue to create right-turn-only lane (onto Signs Road)
- Optimize signal timing at key intersections to reduce delay
- EDC will continue to work with DOT, FDNY, NYPD, EMS on emergency services given the road closure

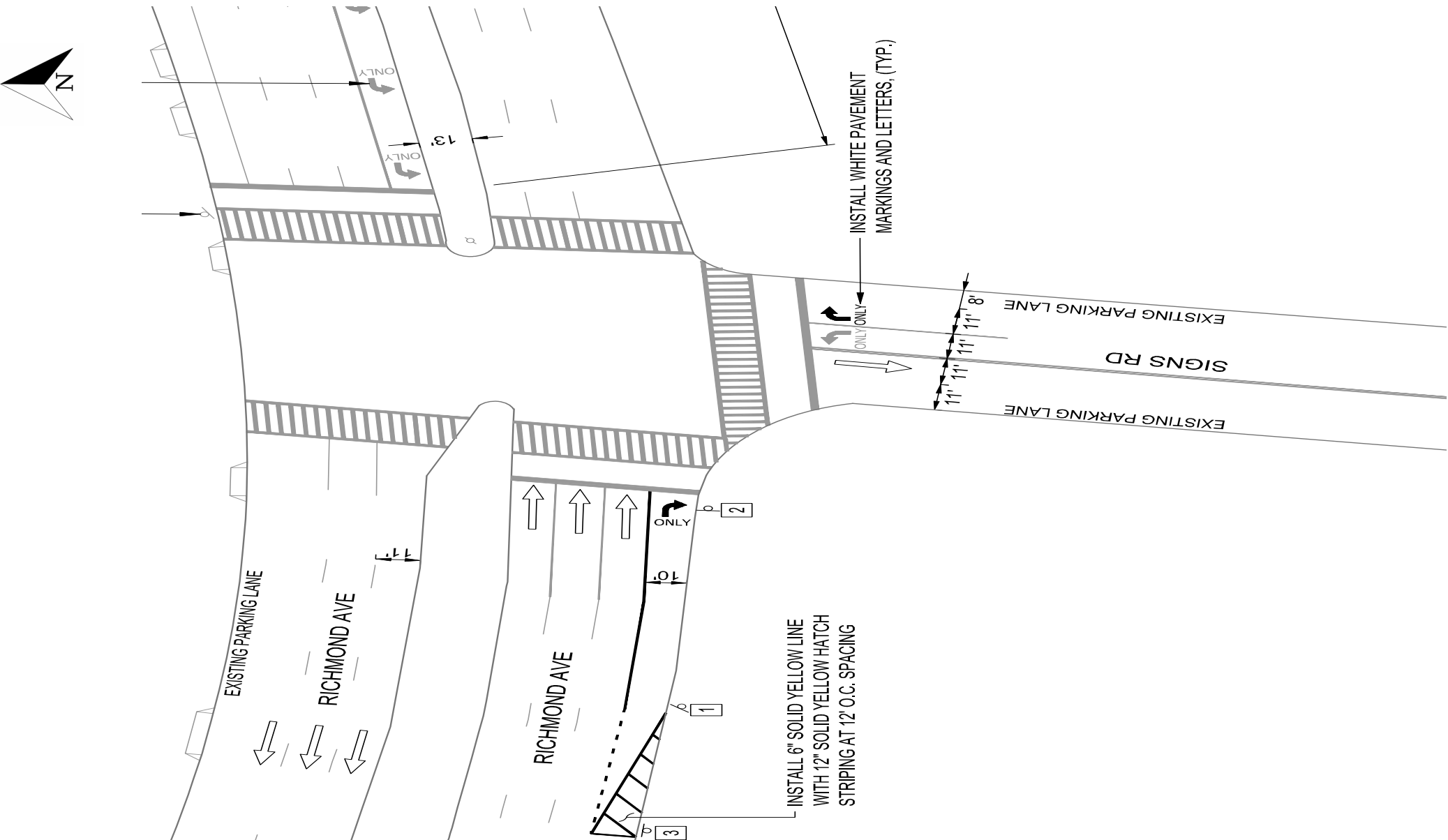


# NORTHBOUND LEFT TURN LANE ON RICHMOND AVENUE





# PARKING RESTRICTION ON SOUTHBOUND RICHMOND AVENUE





# COMMUNITY OUTREACH

- The Construction Manager will have a community liaison as part of their staff during construction at Travis Avenue to answer any construction-related questions
- Residents, motorists, the community board, elected officials, and local organizations will be kept updated on community impacts and progress of the project

Main Creek

TRAVIS

# THANK YOU!

*If you have any questions about the street closure, please contact Victoria Giordano (NYCDOT) at [vgiordano@dot.nyc.gov](mailto:vgiordano@dot.nyc.gov) or Wil Fisher at [wfisher@edc.nyc](mailto:wfisher@edc.nyc).*

